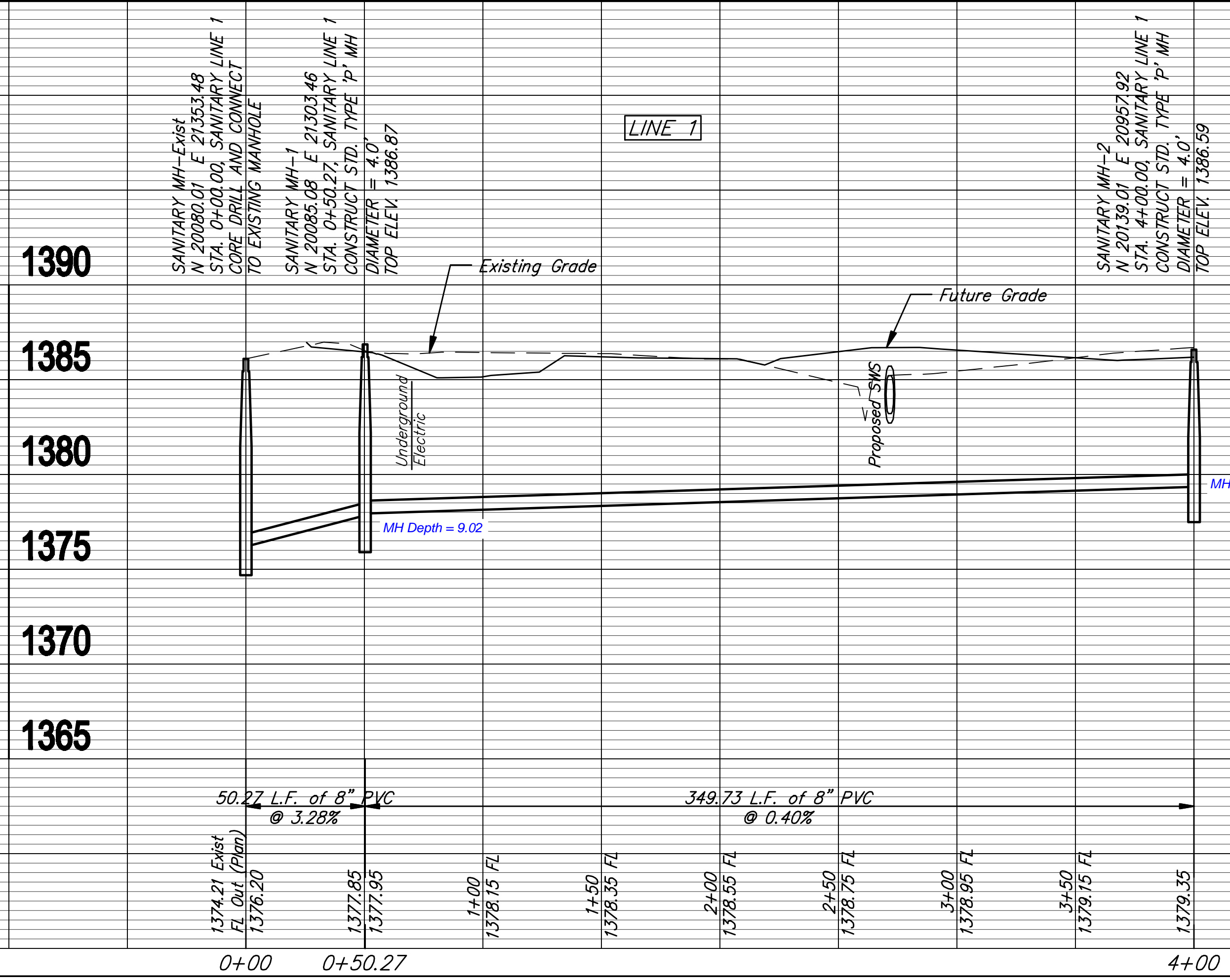


CAUTION: EXISTING UNDERGROUND ELECTRIC LINE

CONCRETE RUBBLE TO BE REMOVED AND DISPOSED OF WITH THIS PROJECT. COST SUBSIDIARY TO BID ITEM FOR SITE CLEARING AND RESTORATION.

TRIM TREES ONLY AS NECESSARY FOR CONSTRUCTION. COST SUBSIDIARY TO BID ITEM FOR SITE CLEARING AND RESTORATION.

CAUTION: EXISTING UNDERGROUND ELECTRIC LINE



PROJECT NUMBER: 465-84492
 DATE: Mar. 6, 2008
 E.C.G. (ELECTRIC)
 U.T.Y. (UTILITY)
 RUGGLES & POLING, P.A.
 ENGINEERING SURVEYING AND PLANNING
 1000 S. W. 10th St., Suite 100
 WICHITA, KS 67202
 PHONE: 316-261-1111
 FAX: 316-261-1112
 WWW: www.rugglespoling.com

BRENTWOOD SOUTH 3RD ADDITION
 SS: LINE 1 & LINE 2
 WICHITA, KANSAS