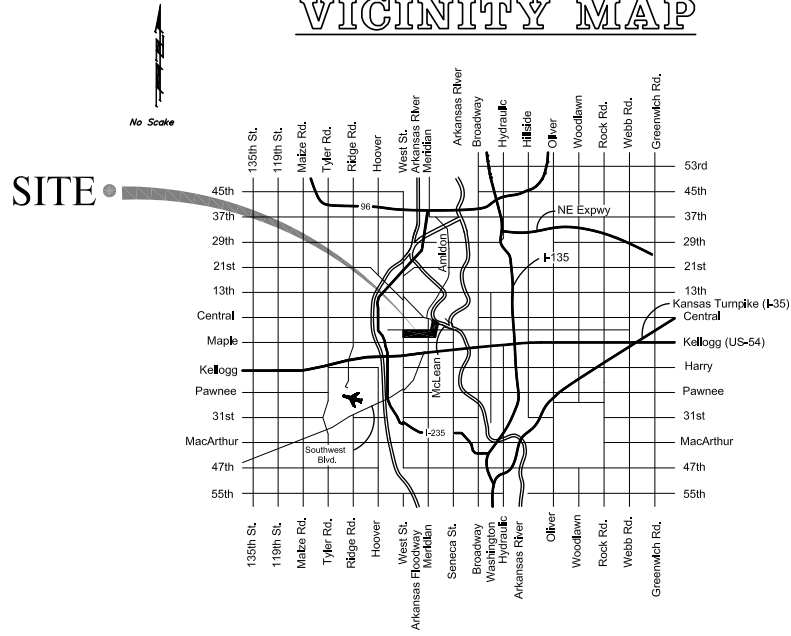


VICINITY MAP



STORM WATER SEWER COLLECTION SYSTEM IMPROVEMENTS

1ST & 2ND STREET DRAINAGE IMPROVEMENT PROJECT

Project No.
562-864401

OCA No.
660795

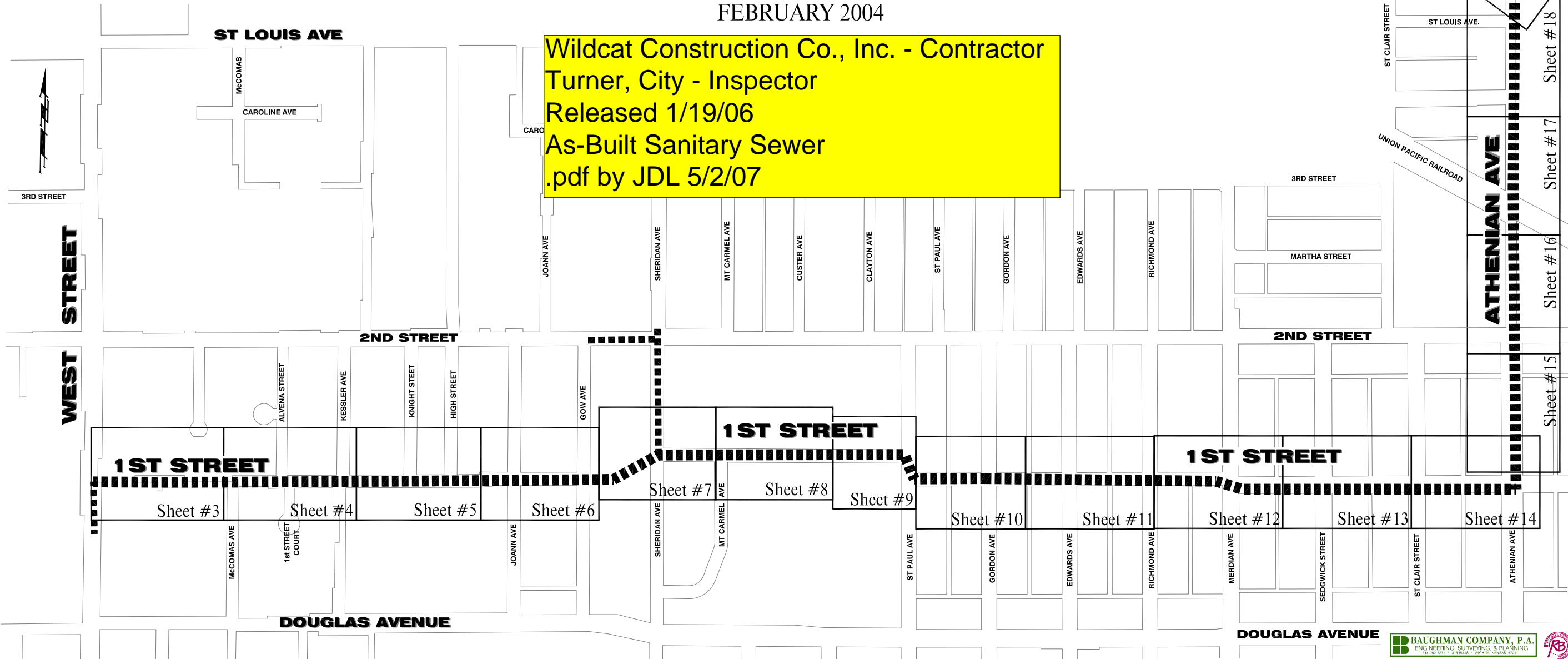
CITY OF WICHITA, KANSAS

Christopher M. Carrier, P.E. Director of Stormwater Management

FEBRUARY 2004

INDEX

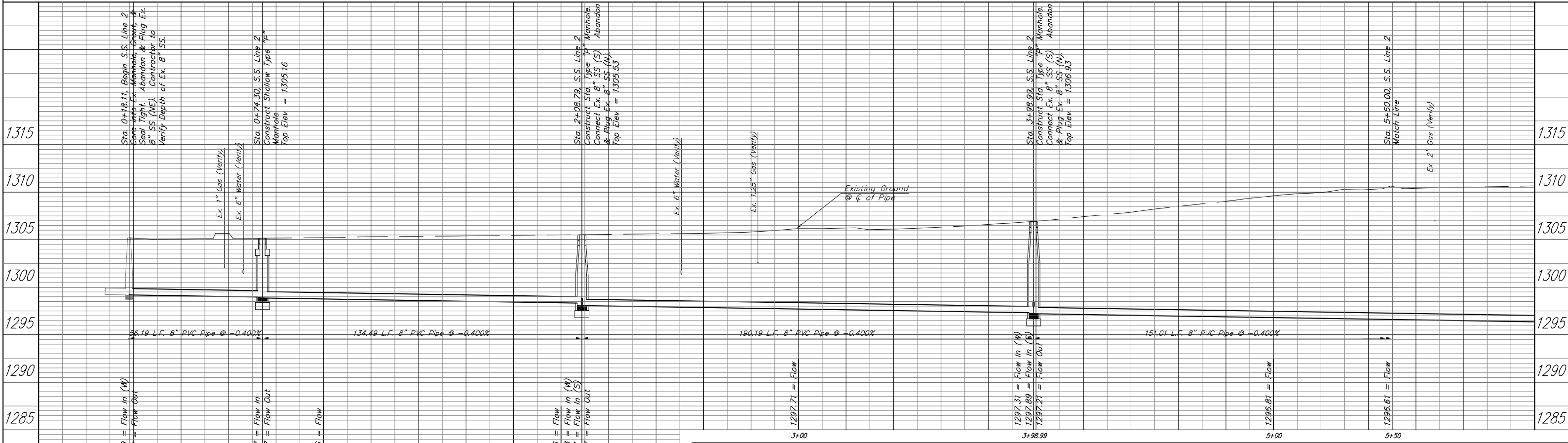
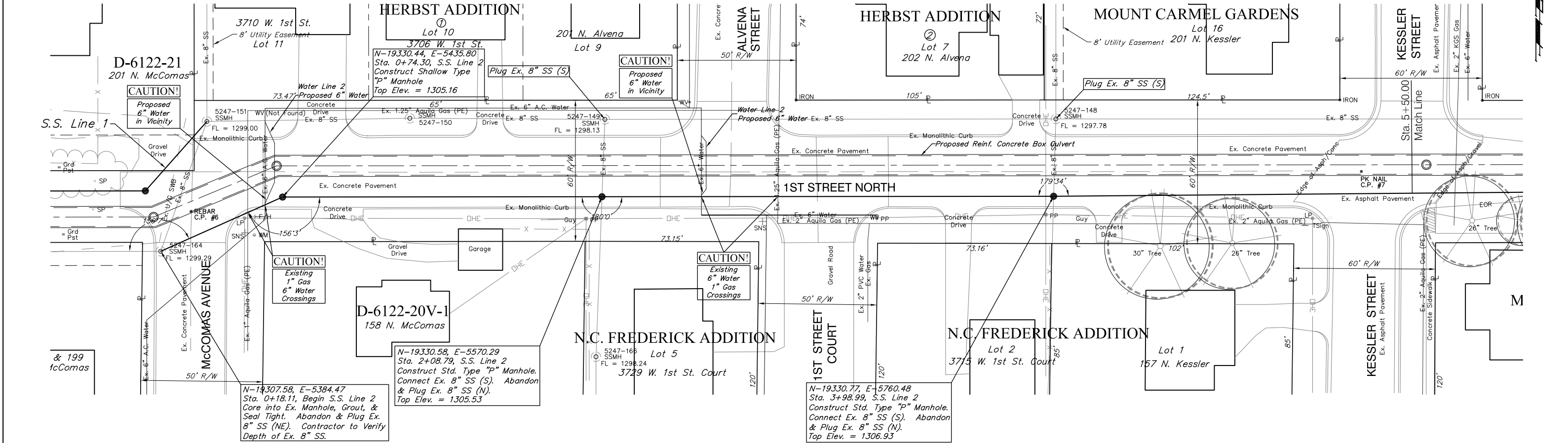
Title Sheet	1
Project Benchmarks & Control Points	1a
Notepage	2
RCBC Plan & Profile	3-19
SWS Plan & Profile	20-25
SS Plan & Profile	26-31
Water Line Relocation Plan & Profile	32-34
Sewer Support Structure Details	35
Outlet Structure Details	36
Railroad Crossing Details	37
Water Meter Relocation Sheet	38
Storm Water Sewer Details	38a-44
Typical Pavement Sections	45
Pavement Details	46-47
Erosion Control Details	48-51



BENCHMARKS:
 BM #21 - "□" Top of Curb S.W. Corner of 1st Street & McComas, 39.0' S. of @ 1st Street, 15.0' W. of @ McComas
 Elevation = 1305.68 (M.S.L.) 118.28 (City Datum)
 BM #20 - "□" Top of Curb S.W. Corner of 1st Street & Kessler, 45.0' S. of @ 1st Street, 15.5' W. of @ Kessler
 Elevation = 1310.11 (M.S.L.) 122.71 (City Datum)

Remove Ex. Pavement as Necessary to Construct the Sanitary Sewer and Replace with Temporary A.C. Pavement. Cost to be **INCIDENTAL** to the Project.

SCALE:
 1" = 20' HORIZONTAL
 1" = 5' VERTICAL



PROJECT NUMBER 562-862003	SHEET NAME SS02	ENGINEERING DIRECTORY F:\WSD\Land\dwg
DESIGN TPV	APPROVED JFB	DATE Feb. 2004
SCALE Noted	BAUGHMAN NO 02-07-E369	

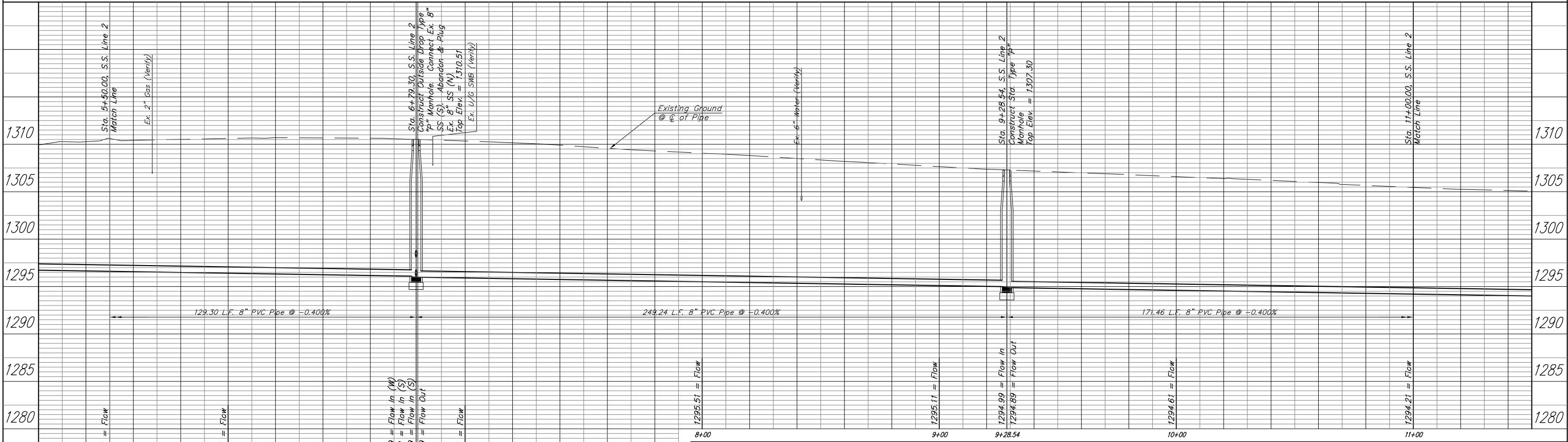
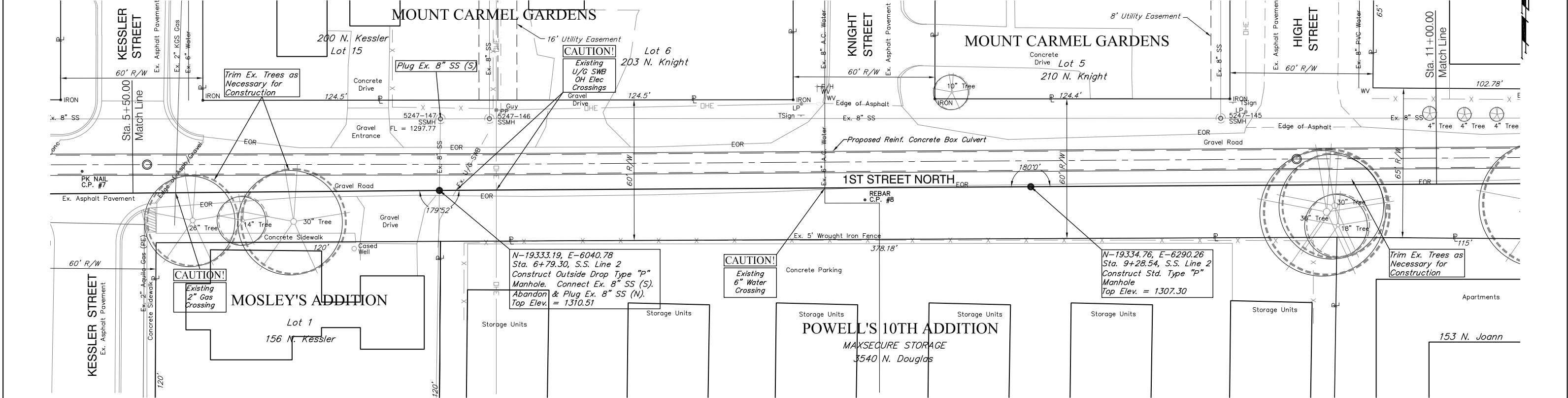
WICHITA, KANSAS
SS Line 2 PLAN & PROFILE
 Sta. 0+17.81 to Sta. 5+50.00
 1ST & 2ND STREET DRAINAGE IMPROVEMENTS

BAUGHMAN COMPANY, P.A.
 ENGINEERING, SURVEYING, & PLANNING
 316-262-7271 • 315 ELLIS • WICHITA, KANSAS 67211

BENCHMARK:
 BM #20 - "Top of Curb S.W. Corner of 1st Street & Kessler, BM #19 - R.R. Spike in S. face of LP, N.W. Corner 1st Street & High Street
 45.0' S. of @ 1st Street, 15.5' W. of @ Kessler Elevation = 1310.11 (M.S.L.) 122.71 (City Datum)
 Elevation = 1308.28 (M.S.L.) 120.88 (City Datum)

Remove Ex. Pavement as Necessary to Construct the Sanitary Sewer and Replace with Temporary A.C. Pavement. Cost to be INCIDENTAL to the Project.

SCALE:
 1" = 20' HORIZONTAL
 1" = 5' VERTICAL



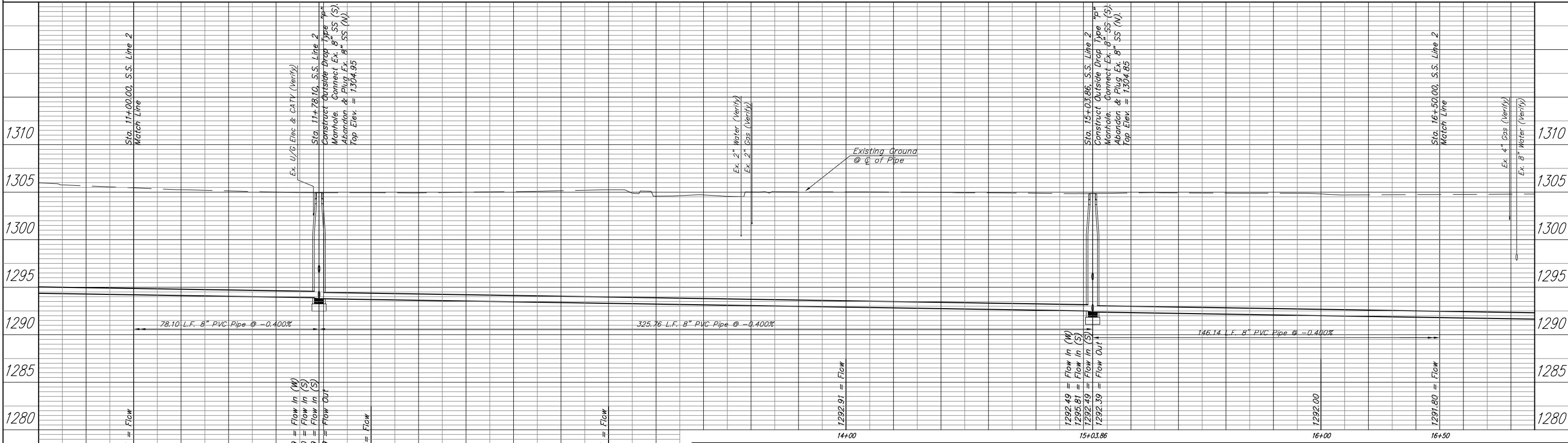
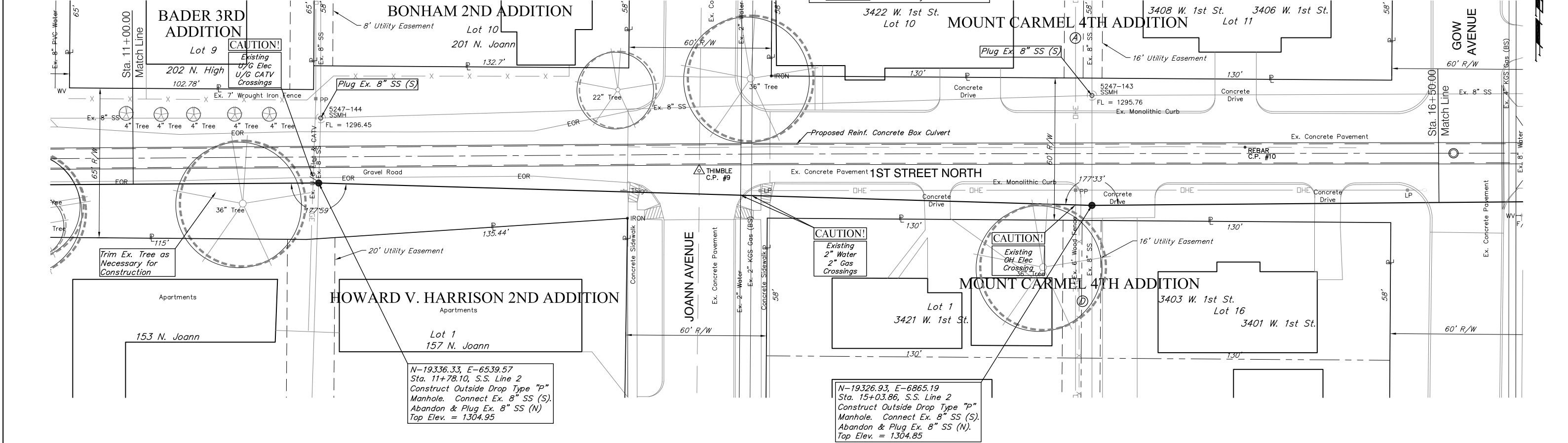
PROJECT NUMBER 562-862003	SHEET NAME SS03	ENGINEERING DIRECTORY F:\WSD\Land\dwg
DESIGN TPV	APPROVED JFB	DATE Feb. 2004
DRAWN TPV	SCALE Noted	BAUGHMAN NO 02-07-E369

WICHITA, KANSAS
SS Line 2 PLAN & PROFILE
 Sta. 5+50.00 to Sta. 11+00.00
 1ST & 2ND STREET DRAINAGE IMPROVEMENTS

BAUGHMAN COMPANY, P.A.
 ENGINEERING, SURVEYING, & PLANNING
 316-262-7271 • 315 ELLIS • WICHITA, KANSAS 67211

BENCHMARK:
 BM #18 - "□" Top of Curb S.W. Corner of 1st Street & Gow Avenue,
 16.0' S. of Q of 1st Street, 44.0' W. of Q of Gow Avenue
 Elevation = 1304.64 (M.S.L.) 117.24 (City Datum)

SCALE:
 1" = 20' HORIZONTAL
 1" = 5' VERTICAL



PROJECT NUMBER 562-862003	SHEET NAME SS04	ENGINEERING DIRECTORY F:\WSD\Land\dwg
DESIGN TPV	DRAWN TPV	APPROVED JFB
DATE Feb. 2004	SCALE Noted	BAUGHMAN NO 02-07-E369

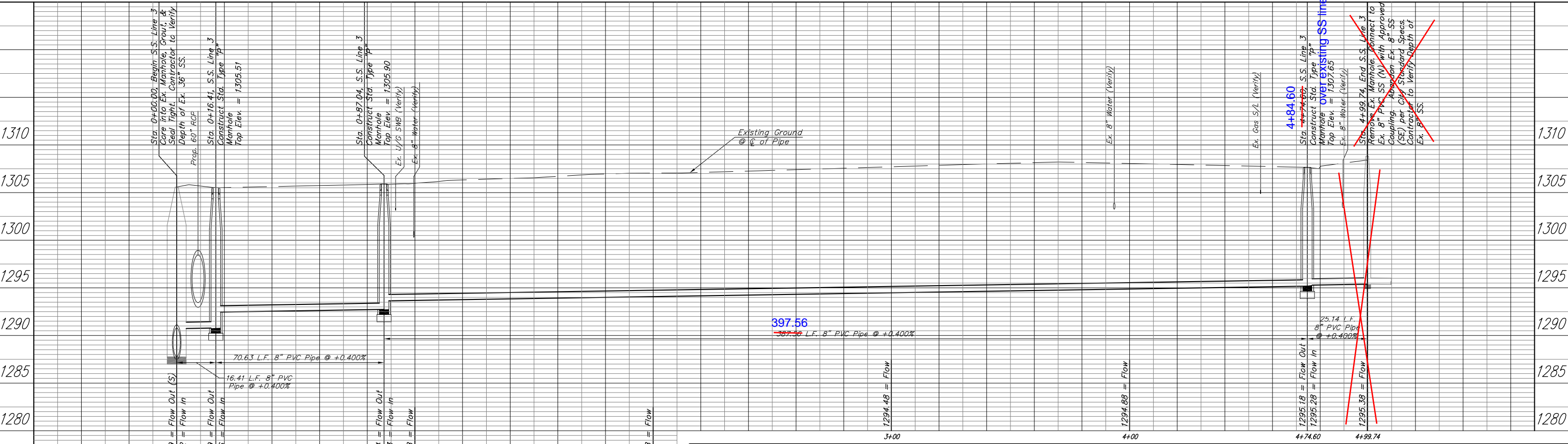
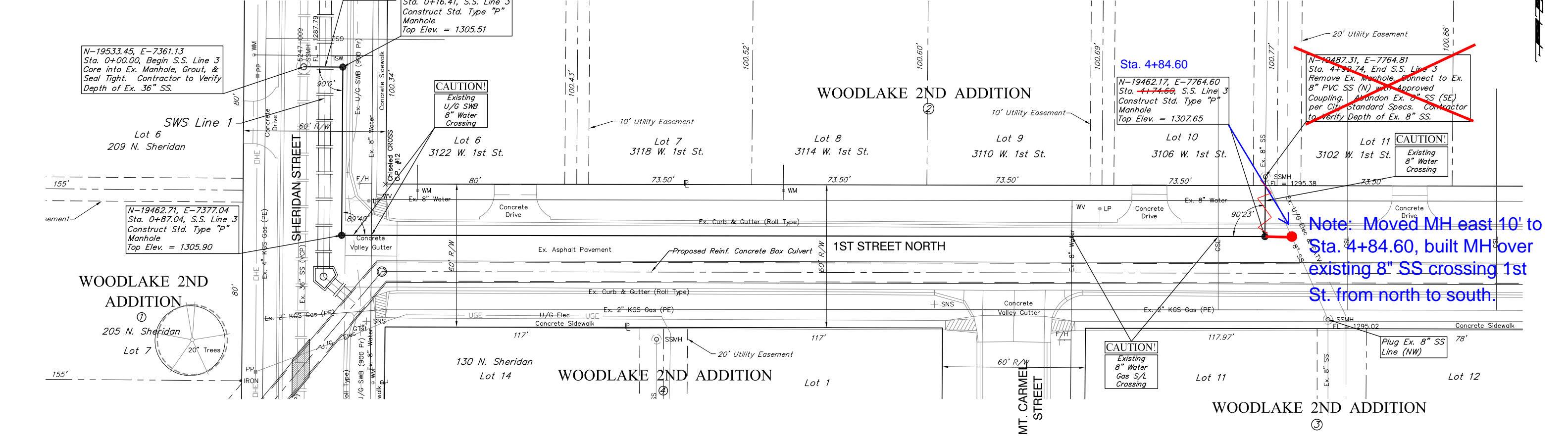
WICHITA, KANSAS
SS Line 2 PLAN & PROFILE
 Sta. 11+00.00 to Sta. 16+50.00
 1ST & 2ND STREET DRAINAGE IMPROVEMENTS

BAUGHMAN COMPANY, P.A.
 ENGINEERING, SURVEYING, & PLANNING
 316-262-7271 • 315 ELLIS • WICHITA, KANSAS 67211

SHEET 29 OF 51

BENCHMARK:
 BM #17 - "□" Top of Curb W. Side of Sheridan Avenue at @ 1st Street extended West
 Elevation = 1306.08 (M.S.L.) 118.68 (City Datum)

SCALE:
 1" = 20' HORIZONTAL
 1" = 5' VERTICAL



PROJECT NUMBER 562-862003		SHEET NAME SS06		ENGINEERING DIRECTORY F:\WSD\Land\dwg	
DESIGN TPV	DRAWN TPV	APPROVED JFB	DATE Feb. 2004	SCALE Noted	BAUGHMAN NO 02-07-E369

WICHITA, KANSAS
SS PLAN & PROFILE, LINE 3
 1ST & 2ND STREET DRAINAGE IMPROVEMENTS

BAUGHMAN COMPANY, P.A.
 ENGINEERING, SURVEYING, & PLANNING
 316-262-7271 • 315 ELLIS • WICHITA, KANSAS 67211

SHEET 31 OF 51