

STORM WATER DRAIN #315

to serve

MEADOWLAKE BEACH ADDITION

CITY OF WICHITA, KANSAS

James L. Armour, P.E. City Engineer

Project Number

468-84302

O.C.A. Number

751444

Benchmark

BM #1 - City of Wichita Benchmark Disc, SE Corner of Clifton and 55th Street South, Southwest corner of RCBC, on top of hubguard at the West end. ELEV. = 1263.29 NGVD29

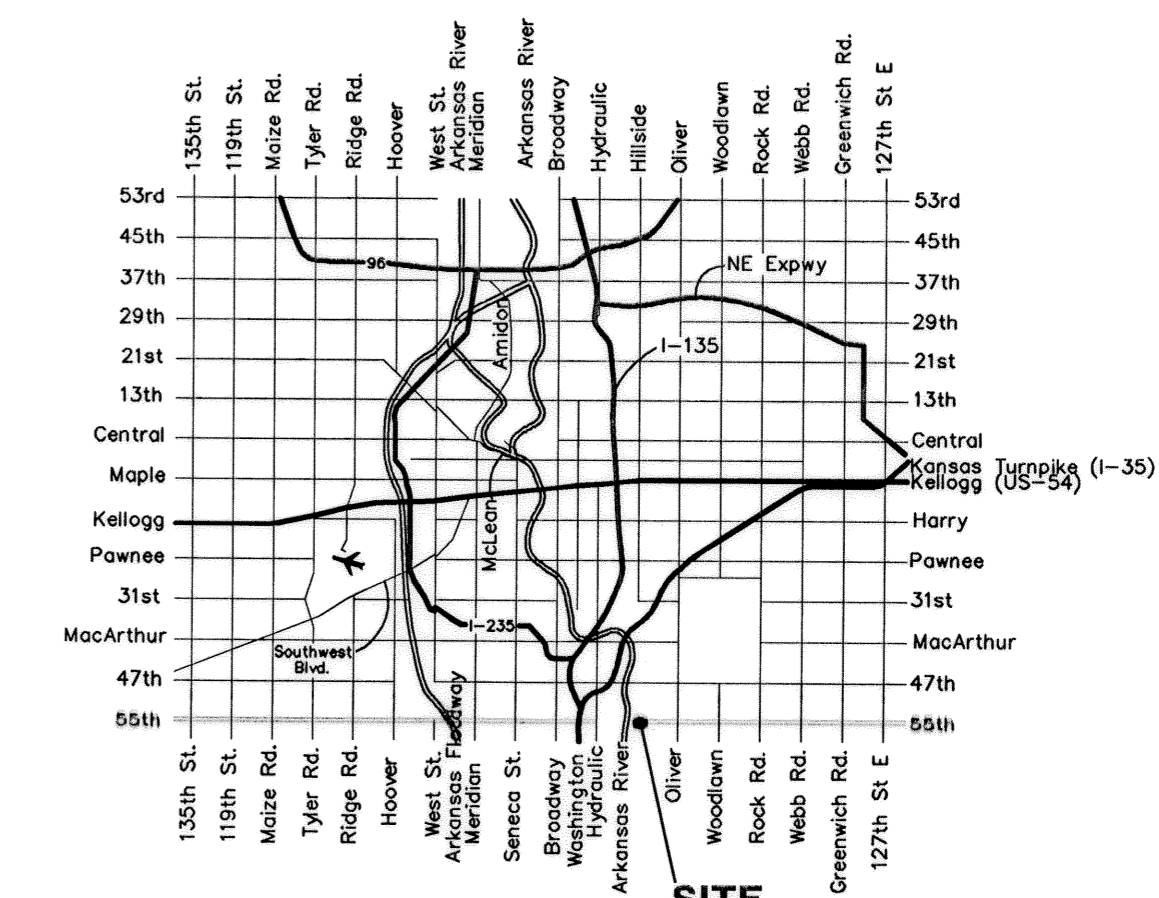
BM #2 - "I" Cut on wall footing located 29' North of the South end of wall, at the Southeast corner of Lot 7 Block A, Meadowlake Beach Addition, Sedgwick County, Kansas. ELEV. = 1266.82 NGVD29

BM #3 - "I" Cut Top of Curb, West side South end of Concrete street North west of Northeast corner of Meadowlake Beach Addition, Sedgwick County, Kansas. ELEV. = 1262.86 NGVD29

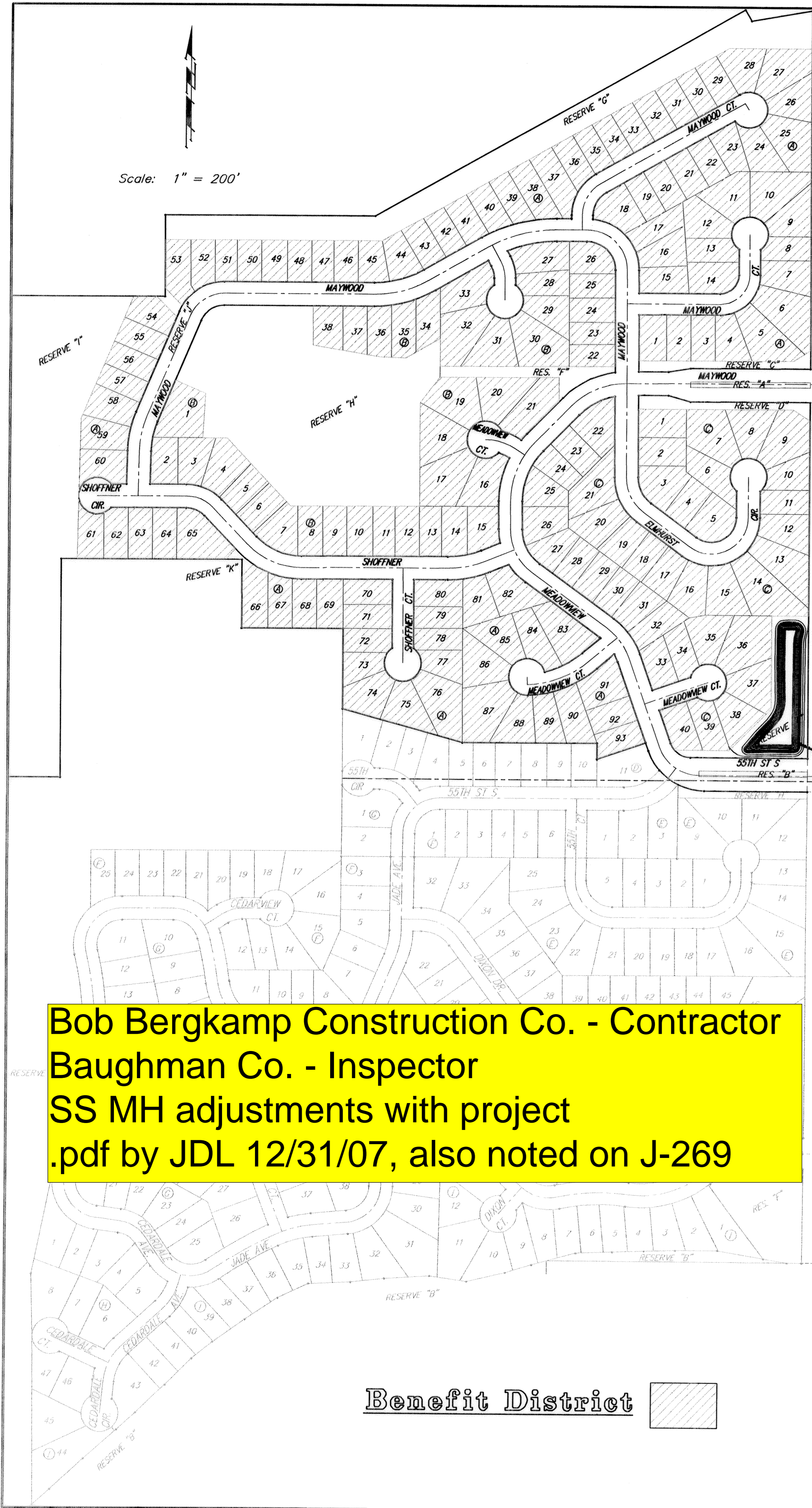
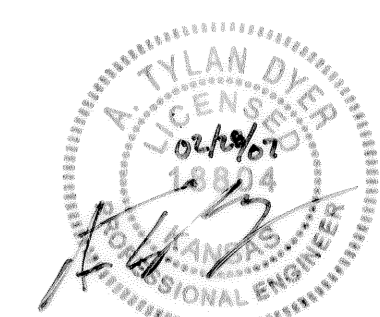
BM #4 - "I" Cut Top of Curb, East return on East side of Concrete street North of the Northwest Corner of Meadowlake Beach Addition, Sedgwick County, Kansas. ELEV. = 1262.95 NGVD29

Sheet Index

Title Sheet	1
Mass Grading Plan	2-4
Mass Grading Typical Section	5
Pond Plan	6
Borrow Excavation Pond Plan	7-9
Pond Cross Sections	10-14
RC Headwall Detail	15
SS Manhole Adjustments	16
Soil Erosion BMP Details	17-20
Coordinate Sheet	21
Copy of Plat	22



SITE Vicinity Map



SS MH adjusted

SS MH adjusted

GENERAL NOTES:

1. Contractor will be required to provide notice to utility companies a minimum of forty-eight (48) hours prior to any excavation, as follows:

Kansas One-Call 687-2470

The Contractor must notify the following in case of an emergency:

- Cox Communications 262-4270
- Kansas Gas Service 1-888-482-4950
- Westar Energy 383-8650
- Aquila Energy 1-800-303-0357
- AT&T 268-2245
- City of Wichita Water Dept. 268-4563
- City of Wichita Sewer Maint. 268-4024
- City of Wichita Storm Maint. 268-4090
- City of Wichita Traffic Maint. 268-4034
- Conoco Phillips Pipeline Co. 1-877-267-2290
- Southern Star Pipeline Co. 529-6600
- Kinder-Morgan Pipeline Co. 1-888-844-5658

2. Utility service lines, poles, valve boxes, meters, and etcetera are to be adjusted as necessary by others prior to construction unless the plans specifically call for their adjustment by the Contractor or unless the plans specifically identify a utility to be adjusted by its owner during construction. Existing utilities and their location, as shown on the plans, represent the best information obtainable for design. The Contractor will be required to work around existing utilities within the right-of-way which do not conflict with proposed construction.

3. Rubble from the removal of miscellaneous structures and excess excavation which is to be wasted shall be disposed of on sites to be provided by the Contractor. These sites shall be approved by the Engineer as to suitability, appearance and site location. Locations, in the opinion of the Engineer, that will leave an unsightly appearance will not be approved. All disposal sites must be approved by the Kansas Department of Health and Environment. Material either stockpiled or disposed of in a flood plain would require a Kansas State Board of Agriculture permit. Any material dumped in waters of the United States or wetlands is subject to U.S. Corps of Engineers permitting regulations. Any material buried or stockpiled beyond approved construction limits would require additional archaeological investigations unless buried in a previously approved borrow location.

4. Trees and shrubs in public right-of-way which are in direct conflict with proposed new construction shall be removed by the Contractor with the Engineer's approval. Trees and shrubs which are not in direct conflict with proposed new construction shall be saved and protected from damage.

5. The Contractor shall give all property owners and/or tenants of developed property abutting the construction of this project a minimum of ten (10) days notice prior to start of construction.

6. The Contractor shall be responsible for preserving property irons. The Contractor will be required to re-establish any property irons which are damaged or destroyed by his construction operations. Such irons shall be re-established by a licensed land surveyor in accordance with state laws.

7. All areas disturbed during construction shall be seeded as indicated on Pond Plan.

8. At conclusion of construction, an as-built survey will be completed by the engineer. The contractor will be required to finish and smooth grade all locations immediately as necessary that are not within $\pm 0.2'$ of street r/w plan grade or within $\pm 0.2'$ of plan grade outside of street r/w. The contractor shall include all costs associated with the regrading and/or remobilization in the bid item "Mass Grading."

9. See Borrow Excavation Plan for availability and location of contractor borrow.

10. The developer for this project is Jay Russell, (316) 722-2417

11. Contractor shall not begin construction until an approved Notice of Intent has been received from the Kansas Department of Health and Environment.

Bob Bergkamp Construction Co. - Contractor
Baughman Co. - Inspector
 SS MH adjustments with project .pdf by JDL 12/31/07, also noted on J-269

Benefit District

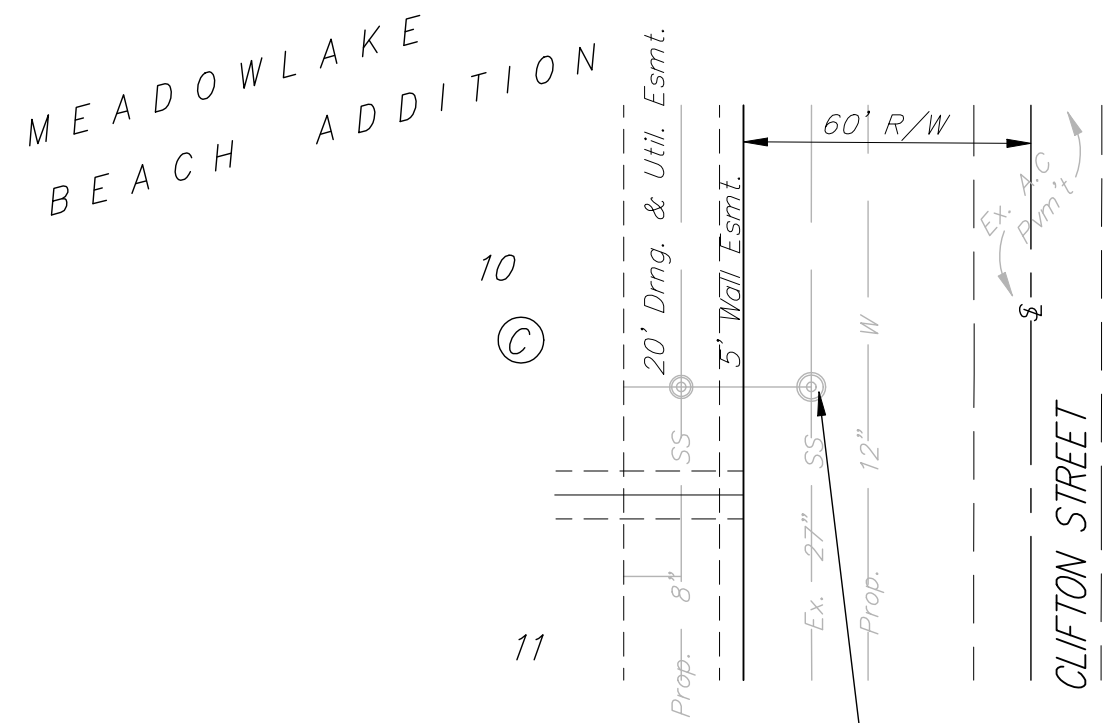
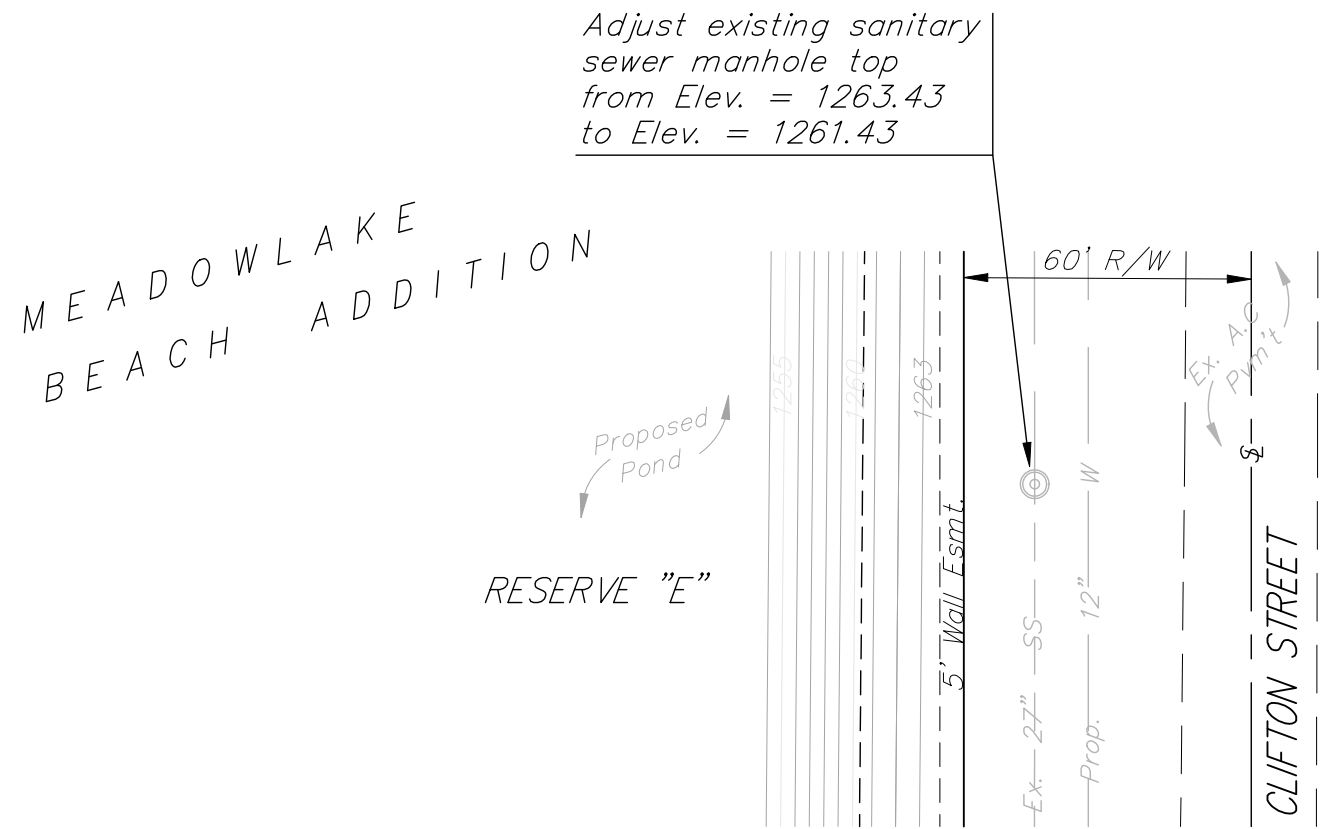
Final Plans
02/28/07 ATD



Baughman Company, P.A. 315 Ellis St. Wichita, KS 67211 P 316-262-7271 F 316-262-0049
 ENGINEERING | SURVEYING | PLANNING | LANDSCAPE ARCHITECTURE



Scale: 1" = 20' Horizontal
• = Iron



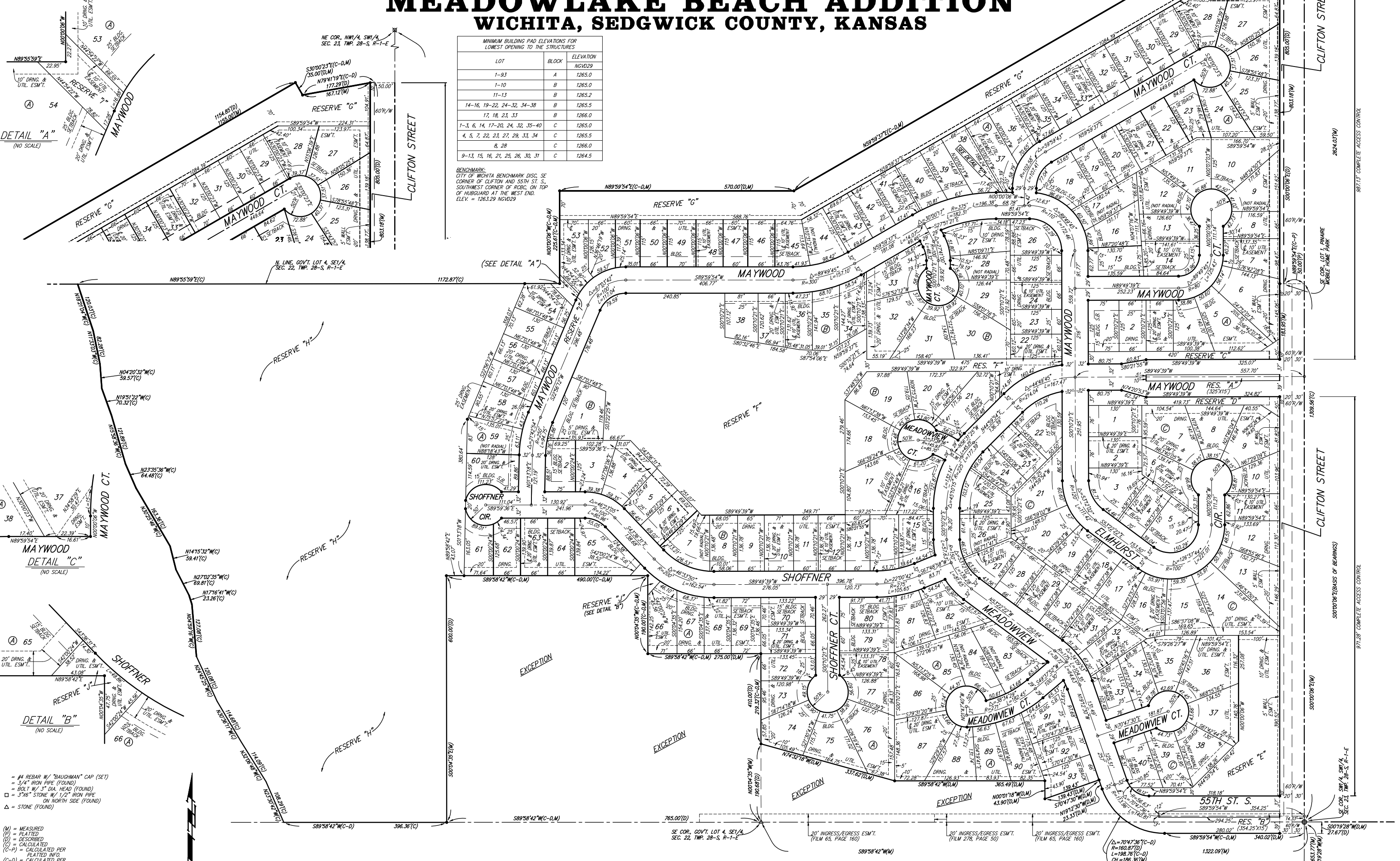
	MEADOWLAKE BEACH ADDITION	
	SS MANHOLE ADJUSTMENTS	
STORM WATER DRAIN IMPROVEMENTS		
<small>Baughman Company, P.A. 315 Elm St. Wichita, KS 67211 P 3162627271 F 3162620149 ENGINEERING SURVEYING PLANNING LANDSCAPE ARCHITECTURE</small>		
PROJECT NUMBER 468-64302	DESIGN ATD	DRAWN TMS
REVISIONS:	APPROVED	DATE 03/07
	SCALE Noted	
	SHEET	16 OF 22
<small>MeadowlakeBeach/SWD/SSadjustments</small>		<small>06-10-E676</small>

MEADOWLAKE BEACH ADDITION WICHITA, SEDGWICK COUNTY, KANSAS

MINIMUM BUILDING PAD ELEVATIONS FOR LOWEST OPENING TO THE STRUCTURES

LOT	BLOCK	ELEVATION
1-9,3	A	1265.0
1-10	B	1265.0
11-13	B	1265.2
14-16, 19-22, 24-32, 34-38	B	1265.5
17, 18, 23, 33	B	1266.0
1-3, 6, 14, 17-20, 24, 32, 35-40	C	1265.0
4, 5, 7, 22, 23, 27, 29, 33, 34	C	1265.5
8, 28	C	1266.0
9-13, 15, 16, 21, 25, 26, 30, 31	C	1264.5

BENCHMARK:
CITY OF WICHITA BENCHMARK DISC, SE CORNER OF CLIFTON AND 55TH ST. S., SOUTHWEST CORNER OF RCBC, ON TOP OF HUBGUARD AT THE WEST END. ELEV. = 1263.29 NGVD29



DETAIL "A"
(NO SCALE)

(SEE DETAIL "A")

DETAIL "C"
(NO SCALE)

DETAIL "B"
(NO SCALE)

- # = # REBAR W/ "BAUGHMAN" CAP (SET)
- (P) = PLATED
- (I) = DESCRIBED
- (C) = CALCULATED
- (C-P) = CALCULATED PER PLATED INFO
- (C-D) = CALCULATED PER DESCRIBED INFO

(M) = MEASURED
(P) = PLATED
(I) = DESCRIBED
(C) = CALCULATED
(C-P) = CALCULATED PER PLATED INFO
(C-D) = CALCULATED PER DESCRIBED INFO



NOTE:
GRANT OF TEMPORARY EASEMENT, (UNDEFINED WIDTH, MODIFIABLE, AND NON-EXCLUSIVE), FOR EXISTING ACCESS AND EXISTING UTILITIES. (DOC. #/FILM-PG. 28770778)

NOTE:
THAT PART OF THE GAS SERVICE COMPANY RIGHT OF WAY AGREEMENT, (FILM 575, PAGE 212), LYING WITHIN THIS PLAT IS IN THE PROCESS OF BEING RELEASED THIS EIGHTH DAY OF FEBRUARY, 2007.