

GENERAL NOTES:

1. Contractor will be required to provide notice to utility companies a minimum of twenty-four (24) hours prior to any excavation, as follows:

Kansas One-Call 687-2470

The Contractor must notify the following in case of an emergency:

- Cox Communications 262-4270
- Kansas Gas Service 1-888-482-4950
- Westar Energy 383-8650
- Aquila Energy 1-800-303-0357
- SBC 268-2245
- City of Wichita Water Dept. 268-4563
- City of Wichita Sewer Maint. 268-4024
- City of Wichita Storm Sewer Maint. 268-4090
- City of Wichita Traffic Maint. 268-4034
- Conoco Pipeline Co. 1-800-231-2551
- Southern Star Pipeline Co. 529-6600
- Phillips Pipeline Co. 1-800-766-8230
- Jayhawk Pipeline Co. 1-888-542-9575

2. Utility service lines, poles, valve boxes, meters, and etcetera are to be adjusted as necessary by others prior to construction unless the plans specifically call for their adjustment by the Contractor or unless the plans specifically identify a utility to be adjusted by its owner during construction. Existing utilities and their location, as shown on the plans, represent the best information obtainable for design. The Contractor will be required to work around existing utilities within the right-of-way which do not conflict with proposed construction.

3. Rubble from the removal of miscellaneous structures and excess excavation which is to be wasted shall be disposed of on sites to be provided by the Contractor. These sites shall be approved by the Engineer as to suitability, appearance and site location. Locations, in the opinion of the Engineer, that will leave an unsightly appearance will not be approved. All disposal sites must be approved by the Kansas Department of Health and Environment. Material either stockpiled or disposed of in a flood plain would require a Kansas State Board of Agriculture permit. Any material dumped in waters of the United States or wetlands is subject to U.S. Corps. of Engineers permitting regulations. Any material buried or stockpiled beyond approved construction limits would require additional archaeological investigations unless buried in a previously approved borrow location.

4. Trees and shrubs in public right-of-way which are in direct conflict with proposed new construction shall be removed by the Contractor with the Engineer's approval. Trees and shrubs which are not in direct conflict with proposed new construction shall be saved and protected from damage.

5. The Contractor shall give all property owners and/or tenants of developed property abutting the construction of this project a minimum of ten (10) days advance notice prior to start of construction.

6. The Contractor shall be responsible for preserving property irons. The Contractor will be required to re-establish any property irons which are damaged or destroyed by his construction operations. Such irons shall be re-established by a licensed land surveyor in accordance with state laws.

7. All existing and proposed erosion control measures including silt fencing, erosion control mat, straw bales, inlet barriers, and const. entrance shall be maintained throughout construction by the contractor and until project is accepted by the City of Wichita. The on-site engineer shall complete weekly reports on the status of erosion control measures. The contractor shall be required to comply with maintenance and/or replacement of erosion control measures as determined by the on-site engineer until project is accepted by City of Wichita. Maintenance and/or replacement of erosion control measures to be paid by L.S. bid item "Site Clearing & Restoration".

8. All excess excavation shall remain on-site and shall be stockpiled or spread at a location determined by the engineer.

9. The Contractor shall be responsible for maintaining continuous flow of sewage through construction. Contractor's proposed method for maintaining sewage flow shall be approved by the Engineer. Cost of maintaining flow of sewage through construction will not be paid for directly and this cost shall be considered as subsidiary to the other pay items of work.

10. Contractor shall be required to backfill front loaded sanitary sewer trenches (Lot 18, Blk. C) with sand, water-jetted and vibrated. Cost to be bid as "Sand Backfill Jetted and Vibrated".

11. All areas disturbed during construction shall be seeded at 300 lbs./acre with Rye Grass immediately following construction in that area. Contractor shall prepare ground per City Specifications.

12. The developer of this project is Paul E. Kelsey, and may be reached at (316) 722-1077

Lat. 2, Main 5, Cowskin Interceptor Sewer Sanitary Sewer Improvements

to serve

HARVEST RIDGE ADDITION - PHASE II

CITY OF WICHITA, KANSAS

James L. Armour, P.E. City Engineer

Project Number

468-83660

O.C.A. Number

744174

Sheet Index

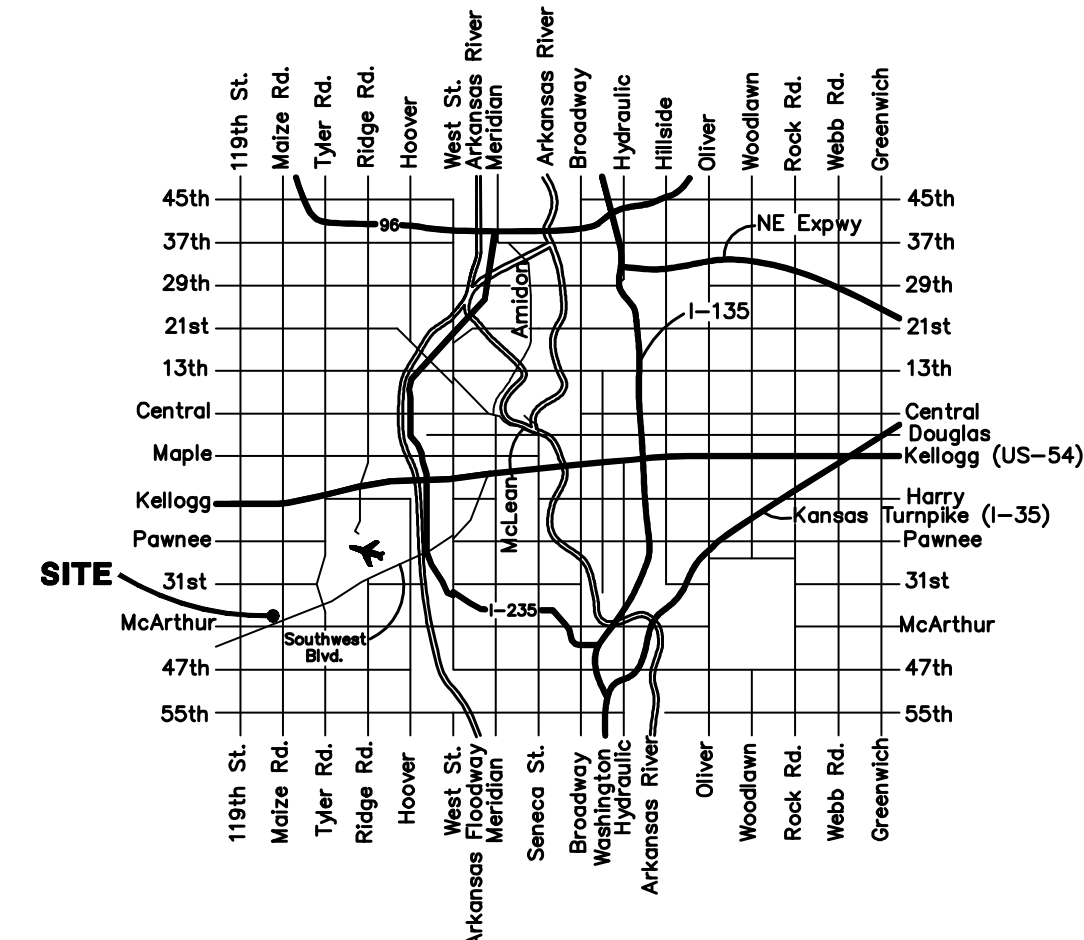
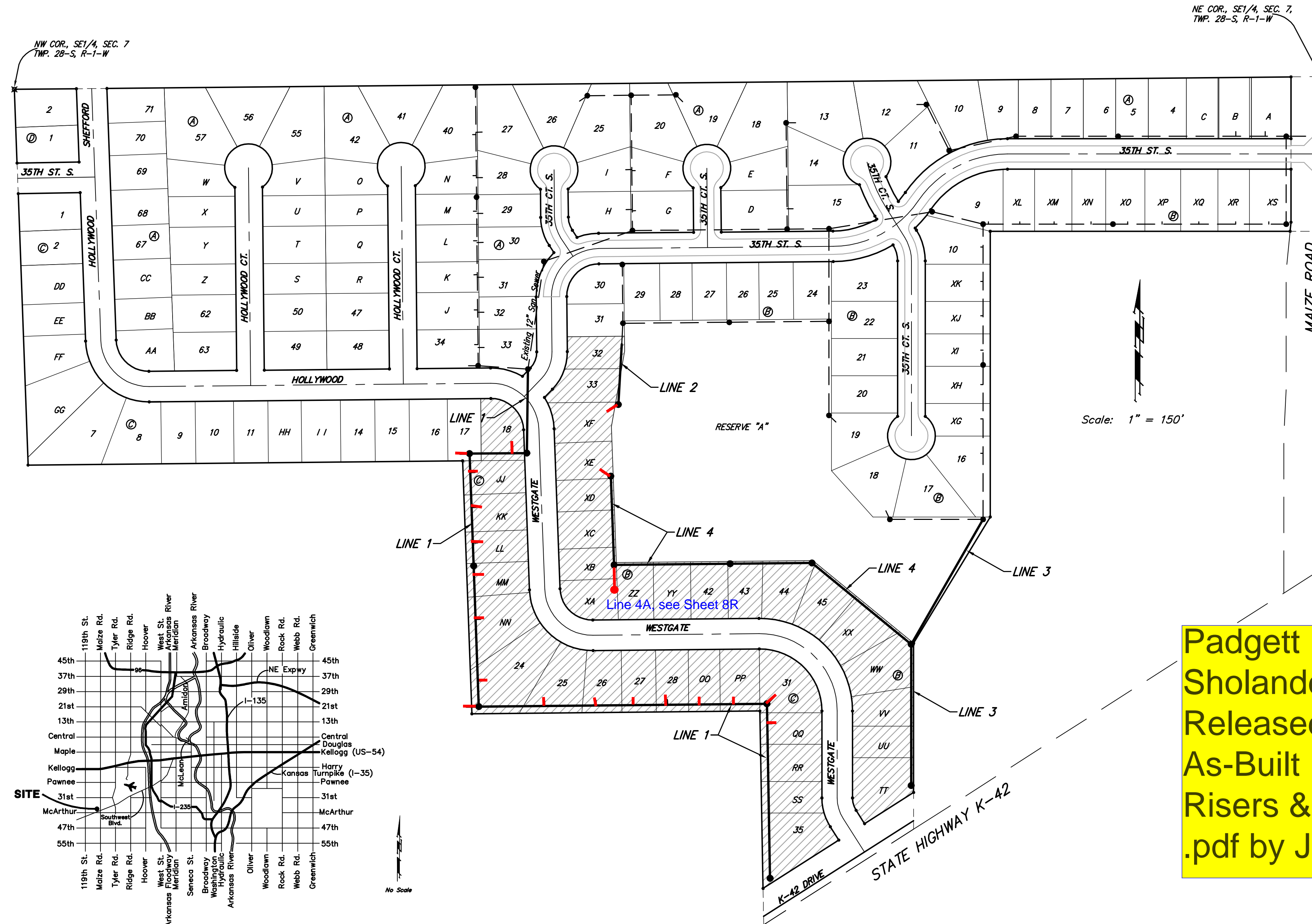
Title Sheet	1
Line 1	2-4
Line 2	5
Line 3	6
Line 4	7-8
Standard Manhole Detail	9
Ring & Cover Detail	10
Vertical Riser Detail	11
Erosion Control BMP's	12-15
Erosion Control Plan	16
Coordinate Sheet	17
Copy of Plat	18

Benchmarks

BM #1: Small RR spike in 2nd PP north of K-42 Highway, west side of Maize
Elev. = 143.61 (City Datum)

BM #2: Small RR spike in PP east of East 1/4 Corner (G)
Elev. = 147.00 (City Datum)

BM #3: "□" Top Headwall southeast corner K-42 Highway and Maize (County BM with City Datum)
Elev. = 144.04 (City Datum)



Vicinity Map

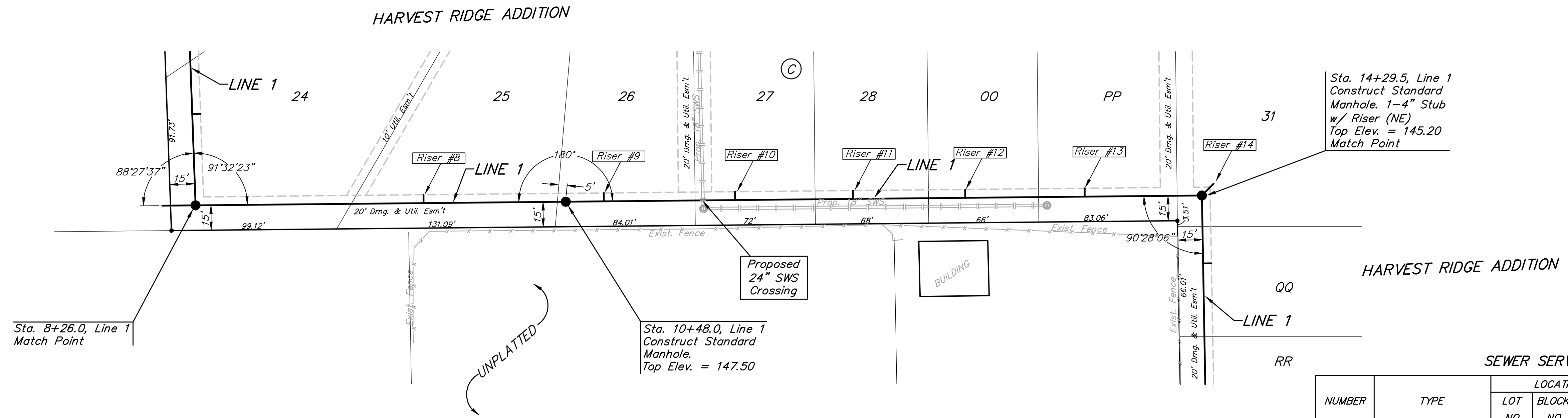
Benefit District

Padgett Excavation, Inc. - Contractor
Sholander, City - Inspector
 Released 8/18/06
As-Built
Risers & Stubs
 .pdf by JDL 11/7/06



Baughman Company, P.A. 315 Ellis St. Wichita, KS 67211 P 316-262-7271 F 316-262-0149
 ENGINEERING | SURVEYING | PLANNING | LANDSCAPE ARCHITECTURE

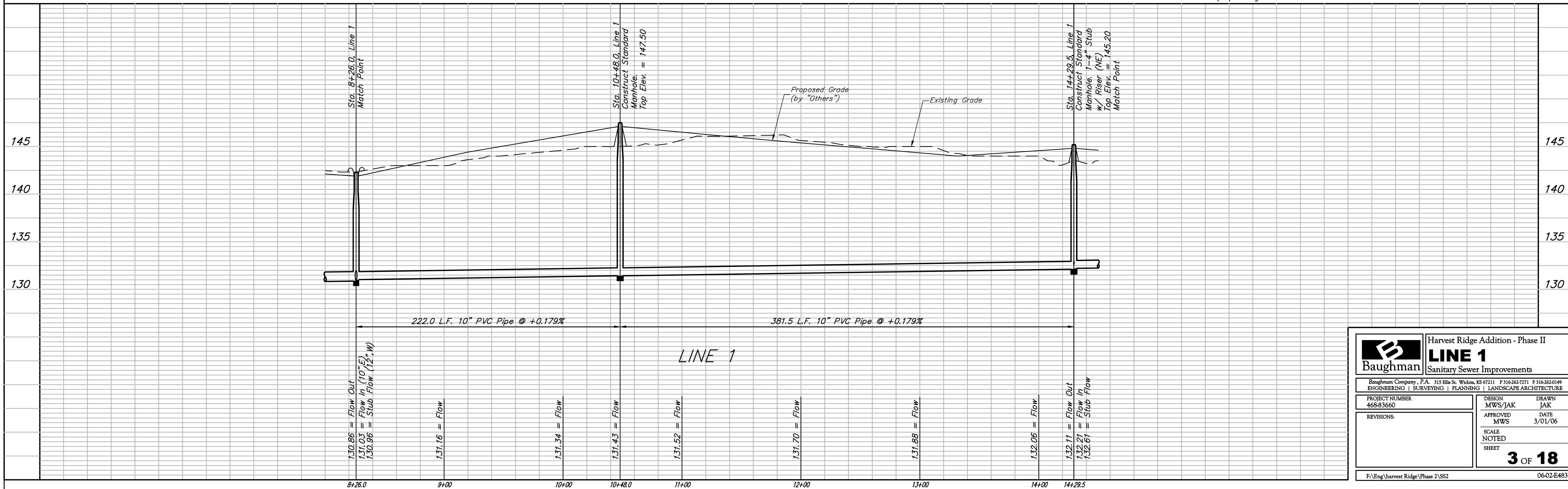
Benchmarks:
 BM #1: Small RR spike in 2nd PP north of K-42 Highway, west side of Maize Elev. = 143.61 (City Datum)
 BM #2: Small RR spike in PP east of East 1/4 Corner (G) Elev. = 147.00 (City Datum)
 BM #3: "□" Top Headwall southeast corner K-42 Highway and Maize (County BM with City Datum) Elev. = 144.04 (City Datum)



SEWER SERVICE TABLE

NUMBER	TYPE	LOCATION			FOR INFORMATION ONLY	
		LOT NO.	BLOCK NO.	LINE NO.	STATION/DIRECTION	APPROXIMATE LENGTH 4" PIPE
8	10" X 4" Tee Saddle	25	C	1	9+ 82 2/Lt.	65' 9.5" VERTICAL, 4' HORIZONTAL
9	10" X 4" Tee Saddle	26	C	1	10+71/Lt.	11' VERTICAL, 4' HORIZONTAL
10	10" X 4" Tee Saddle	27	C	1	11+ 79 9/Lt.	50' VERTICAL, 5' HORIZONTAL
11	10" X 4" Tee Saddle	28	C	1	12+ 29 9/Lt.	21' VERTICAL, 7' HORIZONTAL
12	10" X 4" Tee Saddle	00	C	1	12+ 88 8/Lt.	89' VERTICAL, 5.5' HORIZONTAL
13	10" X 4" Tee Saddle	PP	C	1	13+ 59 9/Lt.	61' VERTICAL, 8' HORIZONTAL
14	4" Stub w/Riser	31	C	1	14+29.5/Lt.	8.5' VERTICAL, 14' HORIZONTAL

NOTE: Vertical Riser Pipe shall be extended to 2' minimum above ground water elevation and 4' maximum below proposed ground elevation.



Baughman Harvest Ridge Addition - Phase II
LINE 1
 Sanitary Sewer Improvements

PROJECT NUMBER: 468-83660
 DESIGN: MWS/JAK
 DRAWN: JAK
 APPROVED: MWS
 DATE: 3/01/06

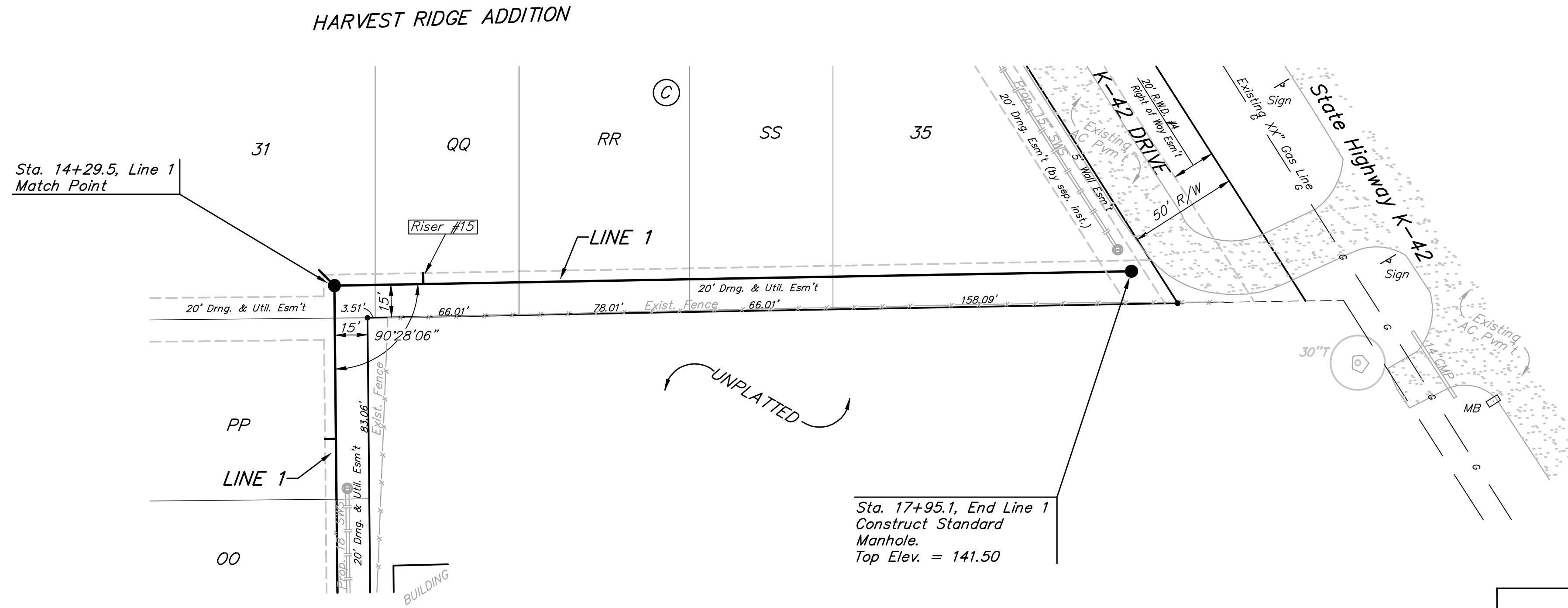
REVISIONS:

SCALE: NOTED
 SHEET: **3 OF 18**

F:\Eng\harvest Ridge\Phase 2\SS2 06-02-E483

Benchmarks:
 BM #1: Small RR spike in 2nd PP north of K-42 Highway, west side of Maize Elev. = 143.61 (City Datum)
 BM #2: Small RR spike in PP east of East 1/4 Corner (G) Elev. = 147.00 (City Datum)
 BM #3: "□" Top Headwall southeast corner K-42 Highway and Maize (County BM with City Datum) Elev. = 144.04 (City Datum)

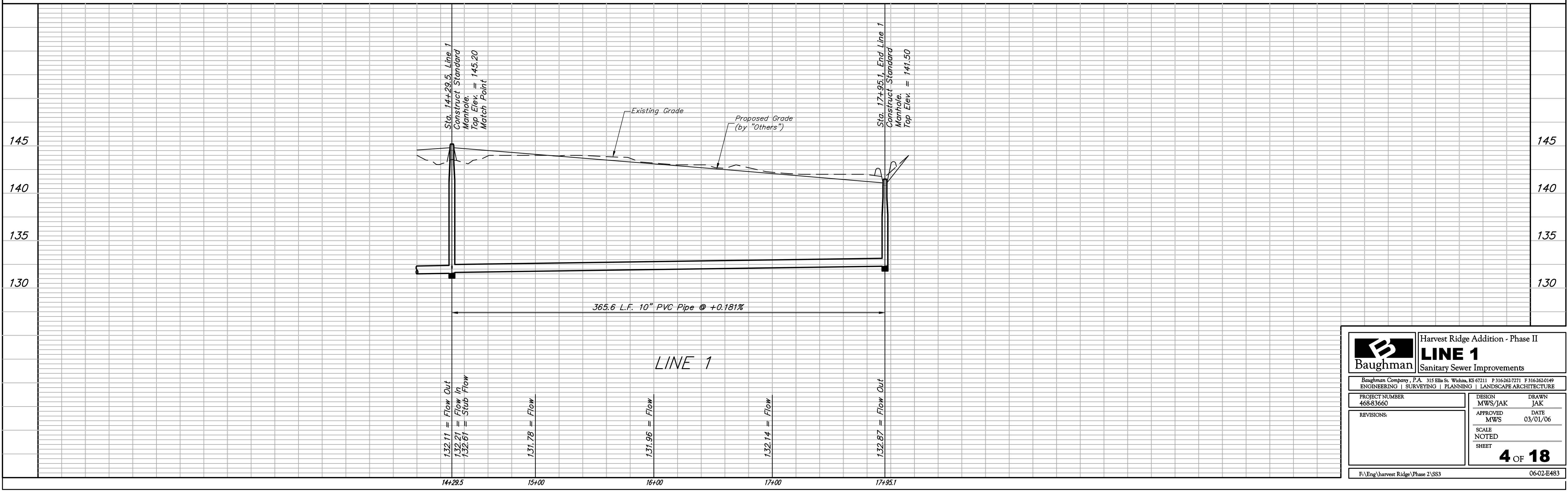
SCALE:
 1" = 40' HORIZONTAL
 1" = 5' VERTICAL
 • = IRON



SEWER SERVICE TABLE

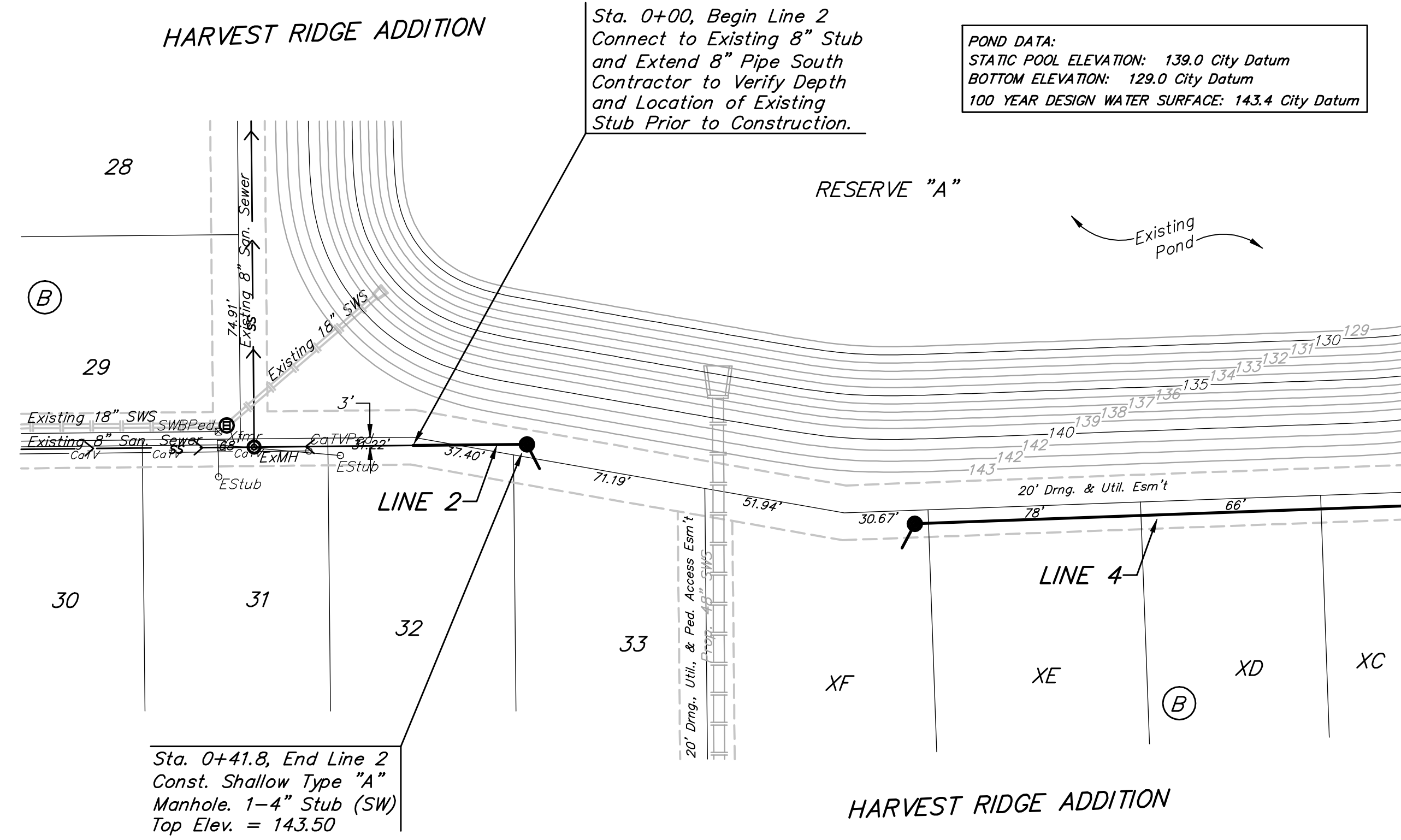
NUMBER	TYPE	LOCATION				FOR INFORMATION ONLY	
		LOT NO.	BLOCK NO.	LINE NO.	STATION/DIRECTION	APPROXIMATE LENGTH 4" PIPE VERTICAL	HORIZONTAL
15	10" X 4" Tee Saddle	QQ	C	1	14+70/Lt.	7.5'	7.5'

NOTE: Vertical Riser Pipe shall be extended to 2' minimum above ground water elevation and 4' maximum below proposed ground elevation.

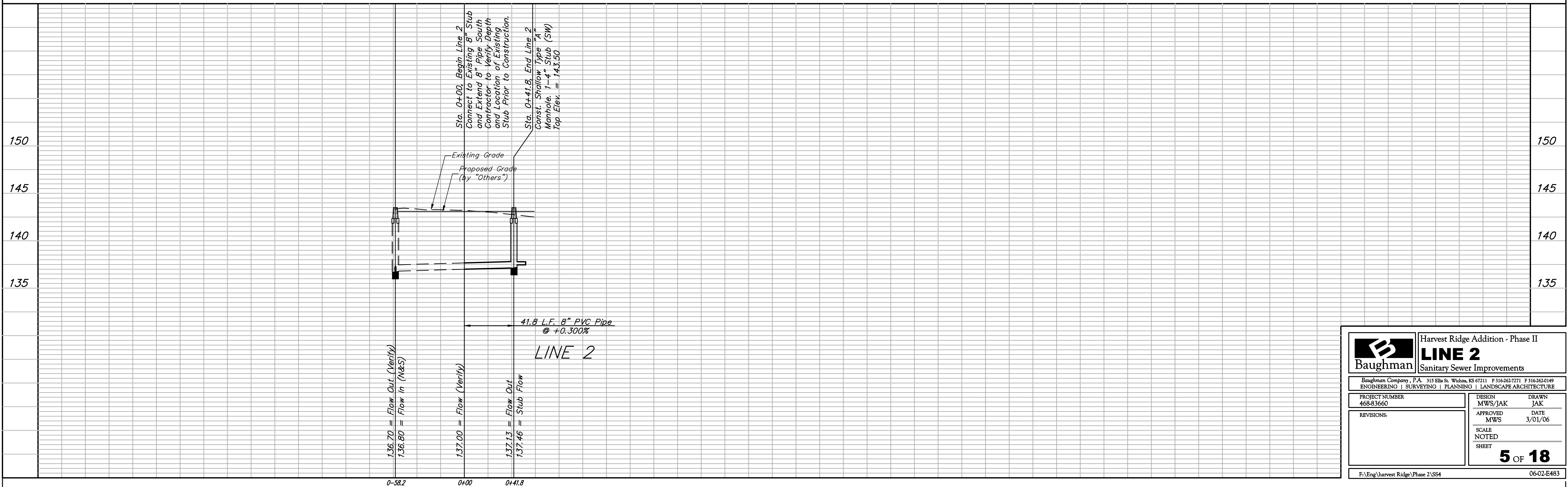
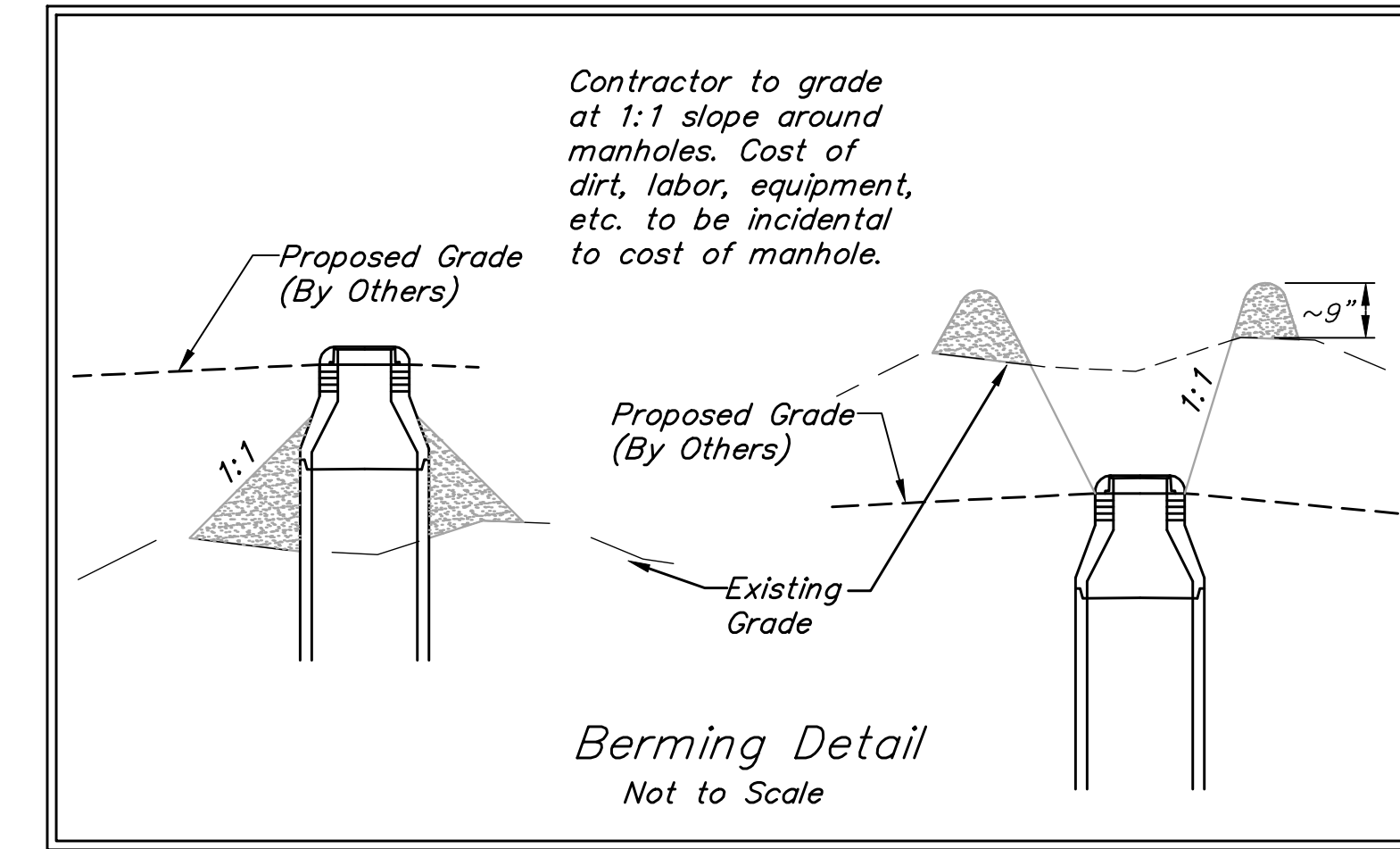


	Harvest Ridge Addition - Phase II	
	LINE 1 Sanitary Sewer Improvements	
PROJECT NUMBER 468-83660	DESIGN MWS/JAK	DRAWN JAK
REVISIONS:	APPROVED MWS	DATE 03/01/06
SCALE NOTED SHEET		4 OF 18
F:\Eng\harvest Ridge\Phase 2\SS3		06-02-E483

Benchmarks:
 BM #1: Small RR spike in 2nd PP north of K-42 Highway, west side of Maize Elev. = 143.61 (City Datum)
 BM #2: Small RR spike in PP east of East 1/4 Corner (G) Elev. = 147.00 (City Datum)
 BM #3: "□" Top Headwall southeast corner K-42 Highway and Maize (County BM with City Datum Elev. = 144.04 (City Datum)

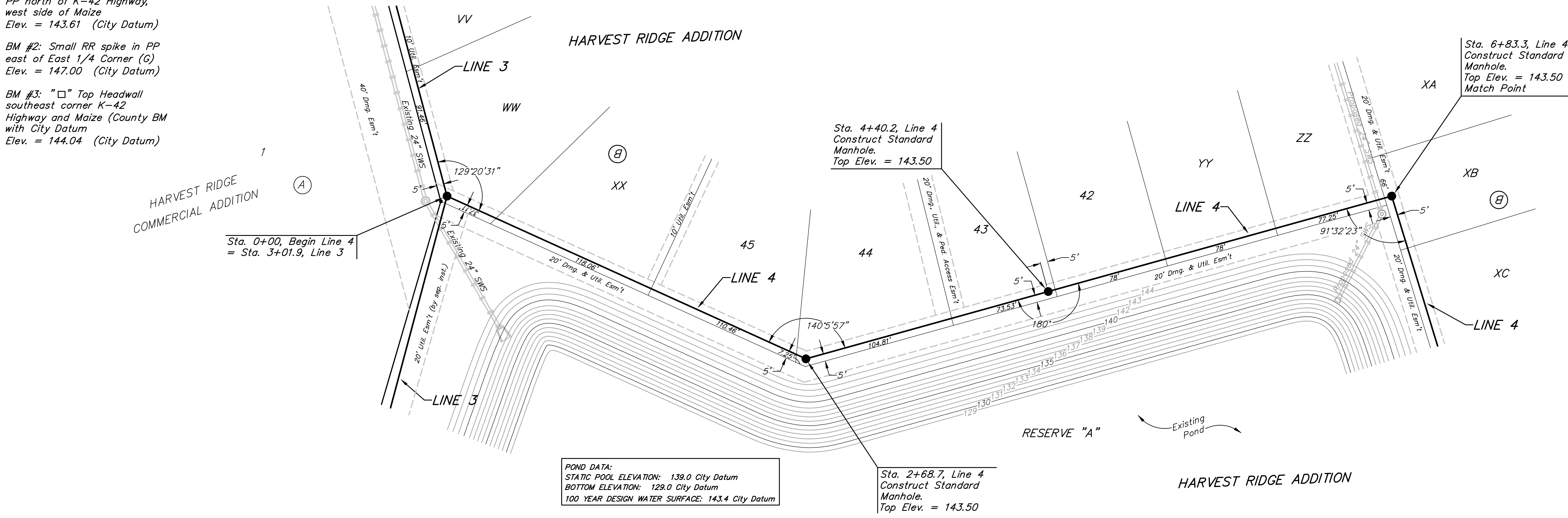


SCALE:
 1" = 40' HORIZONTAL
 1" = 5' VERTICAL
 • = IRON



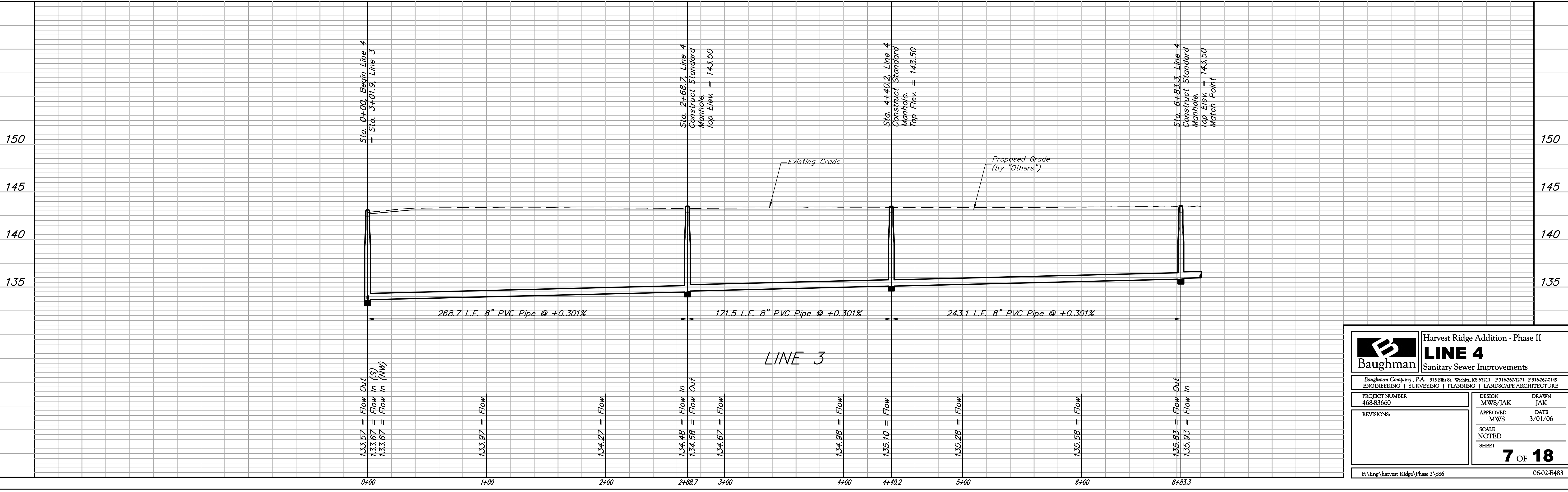
		Harvest Ridge Addition - Phase II	
		LINE 2	
Sanitary Sewer Improvements		Baughman Company, P.A. 315 Ellis St. Wichita, KS 67111 P 316-363-7271 F 316-363-0149 ENGINEERING SURVEYING PLANNING LANDSCAPE ARCHITECTURE	
PROJECT NUMBER 468-83660	DESIGN MWS/JAK	DRAWN JAK	DATE 3/01/06
REVISIONS:	APPROVED MWS	SCALE NOTED	SHEET
		5 OF 18	
F:\Eng\harvest Ridge\Phase 2\SS4		06-02-E483	

Benchmarks:
 BM #1: Small RR spike in 2nd PP north of K-42 Highway, west side of Maize Elev. = 143.61 (City Datum)
 BM #2: Small RR spike in PP east of East 1/4 Corner (G) Elev. = 147.00 (City Datum)
 BM #3: "□" Top Headwall southeast corner K-42 Highway and Maize (County BM with City Datum Elev. = 144.04 (City Datum)



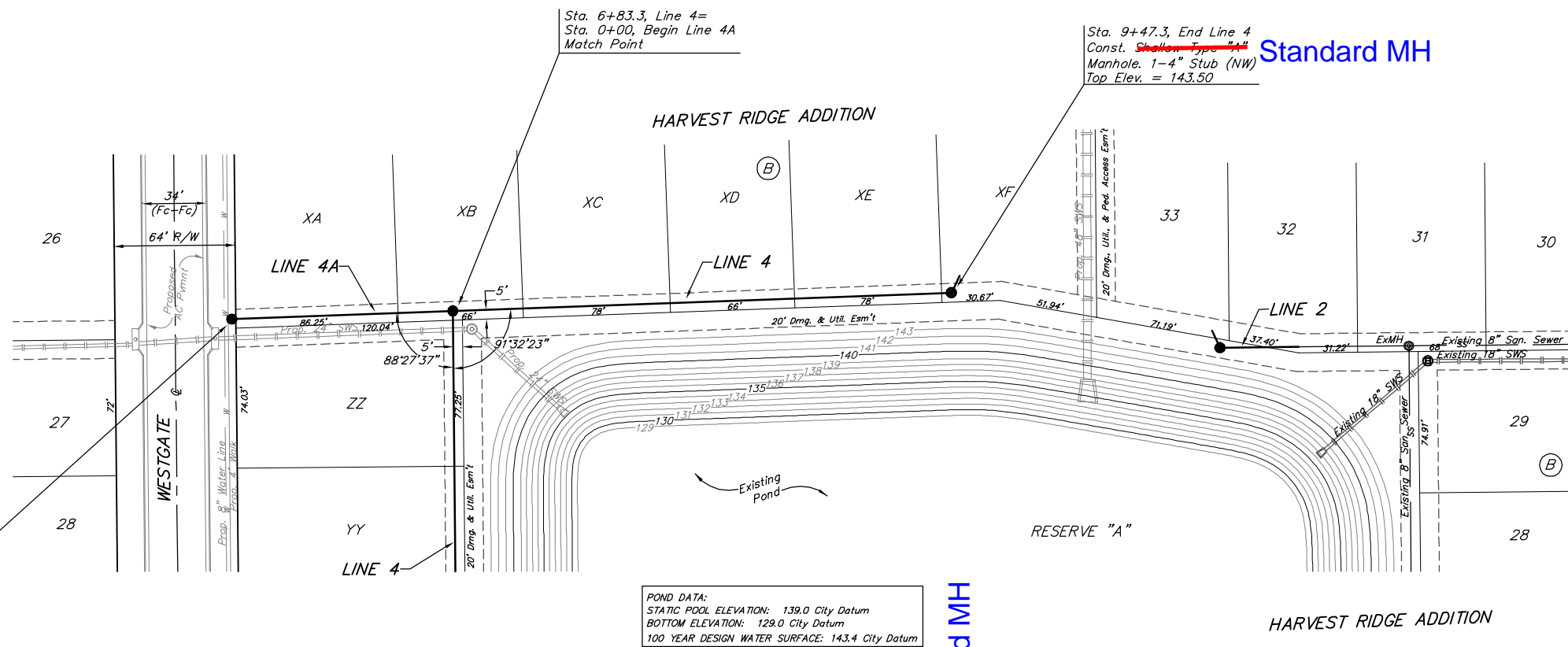
SCALE:
 1" = 40' HORIZONTAL
 1" = 5' VERTICAL
 • = IRON

POND DATA:
 STATIC POOL ELEVATION: 139.0 City Datum
 BOTTOM ELEVATION: 129.0 City Datum
 100 YEAR DESIGN WATER SURFACE: 143.4 City Datum



Baughman		Harvest Ridge Addition - Phase II	
LINE 4		Sanitary Sewer Improvements	
Baughman Company, P.A. 315 Ellis St. Wichita, KS 67211 P 316-262-7271 F 316-262-0149 ENGINEERING SURVEYING PLANNING LANDSCAPE ARCHITECTURE			
PROJECT NUMBER 468-83660	DESIGN MWS/JAK	DRAWN JAK	DATE 3/01/06
REVISIONS:	APPROVED MWS	SCALE NOTED	
		SHEET 7 OF 18	
F:\Eng\harvest Ridge\Phase 2\SS6		06-02-E483	

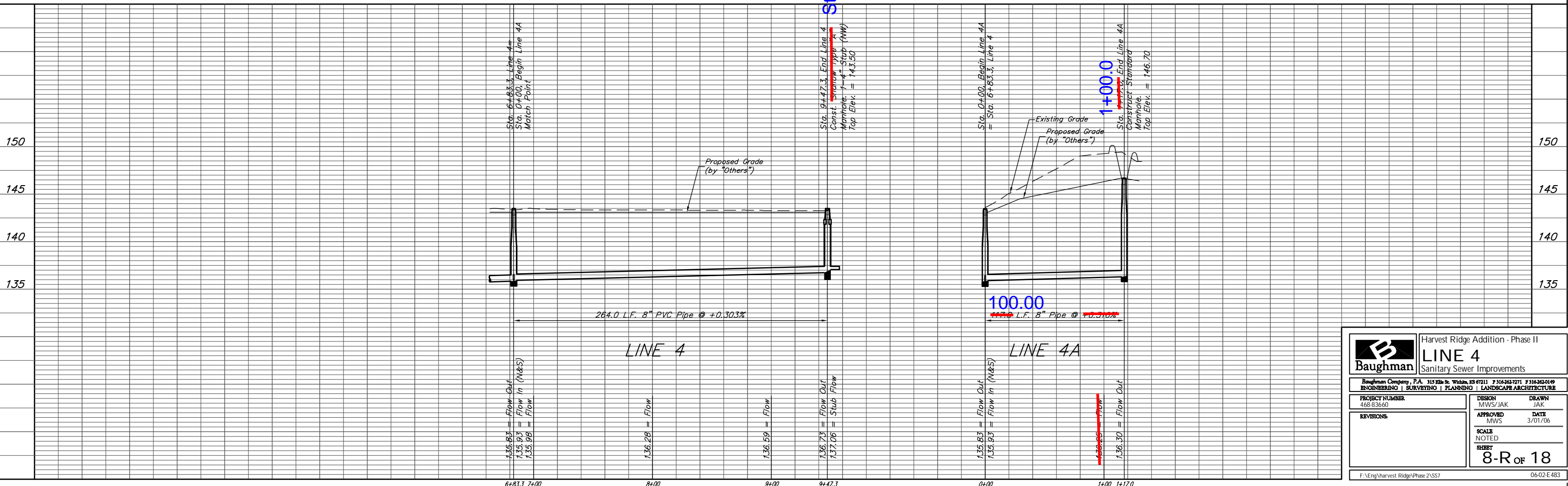
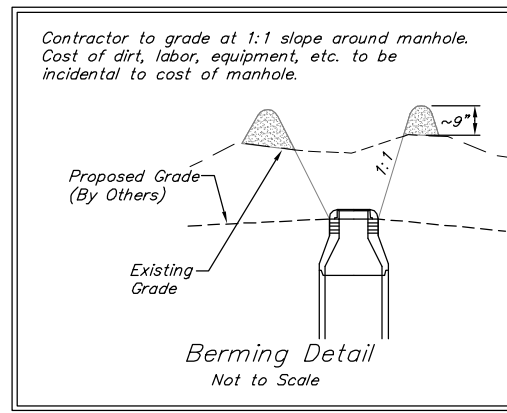
Benchmarks:
 BM #1: Small RR spike in 2nd PP north of K-42 Highway, west side of Maize Elev. = 143.61 (City Datum)
 BM #2: Small RR spike in PP east of East 1/4 Corner (G) Elev. = 147.00 (City Datum)
 BM #3: "□" Top Headwall southeast corner K-42 Highway and Maize (County BM with City Datum) Elev. = 144.04 (City Datum)



1+00.0
 Sta. ~~1+17.0~~ End Line 4A
 Construct Standard Manhole.
 Top Elev. = 146.70

POND DATA:
 STATIC POOL ELEVATION: 139.0 City Datum
 BOTTOM ELEVATION: 129.0 City Datum
 100 YEAR DESIGN WATER SURFACE: 143.4 City Datum

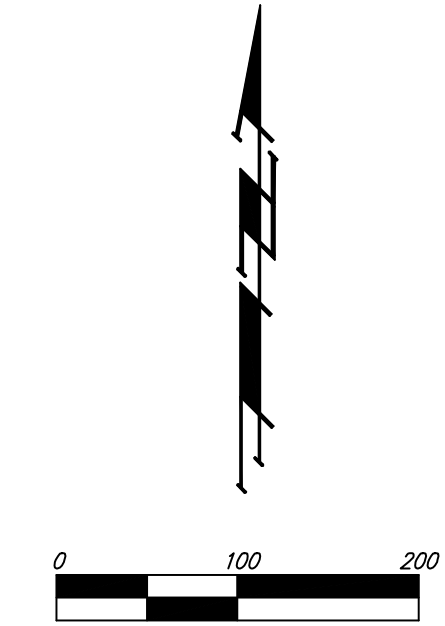
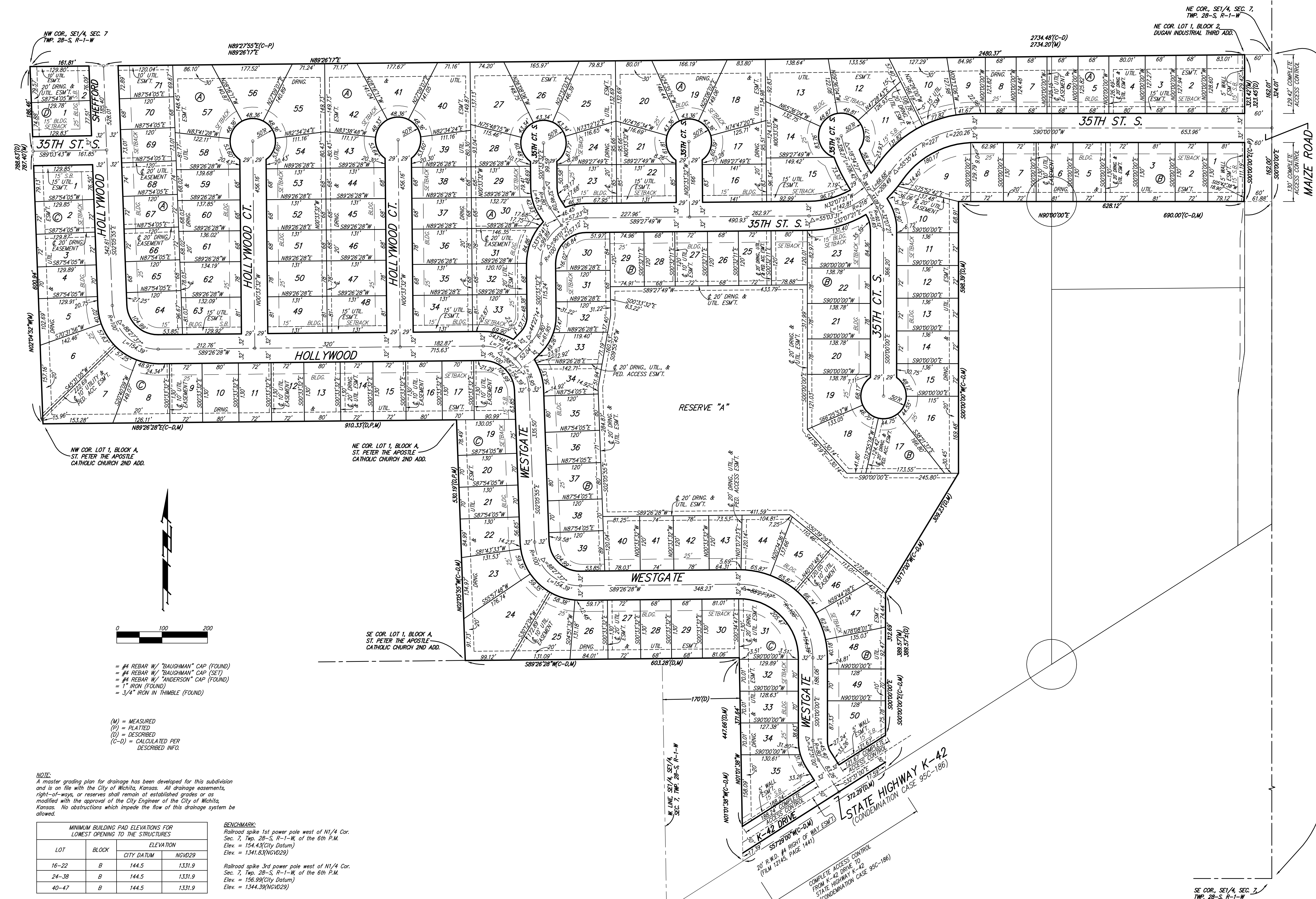
Standard MH



Baughman		Harvest Ridge Addition - Phase II	
		LINE 4	
		Sanitary Sewer Improvements	
Baughman Company, P.A. 315 Elm St. W. Philadelphia, PA 19106-3601 ENGINEERING SURVEYING PLANNING LANDSCAPE ARCHITECTURE			
PROJECT NUMBER 468-83660	DESIGN MWS/JAK	DRAWN JAK	
REVISIONS	APPROVED MWS	DATE 3/01/06	
	SCALE NOTED	SHEET 8-R	OF 18
F:\Eng\harvest Ridge\Phase 2\SS7		06-02-E-483	

HARVEST RIDGE ADDITION

WICHITA, SEDGWICK COUNTY, KANSAS



- = #4 REBAR W/ "BAUGHMAN" CAP (FOUND)
- = #4 REBAR W/ "BAUGHMAN" CAP (SET)
- = #4 REBAR W/ "ANDERSON" CAP (FOUND)
- = 1" IRON (FOUND)
- = 3/4" IRON IN THIMBLE (FOUND)

- (M) = MEASURED
- (P) = PLATTED
- (D) = DESCRIBED
- (C-D) = CALCULATED PER DESCRIBED INFO.

NOTE:
 A master grading plan for drainage has been developed for this subdivision and is on file with the City of Wichita, Kansas. All drainage easements, right-of-ways, or reserves shall remain at established grades or as modified with the approval of the City Engineer of the City of Wichita, Kansas. No obstructions which impede the flow of this drainage system be allowed.

MINIMUM BUILDING PAD ELEVATIONS FOR LOWEST OPENING TO THE STRUCTURES			
LOT	BLOCK	ELEVATION	
		CITY DATUM	NGVD29
16-22	B	144.5	1331.9
24-38	B	144.5	1331.9
40-47	B	144.5	1331.9

BENCHMARK:
 Railroad spike 1st power pole west of N1/4 Cor. Sec. 7, Twp. 28-S, R-1-W, of the 6th P.M. Elev. = 154.43(City Datum)
 Elev. = 1341.83(NGVD29)
 Railroad spike 3rd power pole west of N1/4 Cor. Sec. 7, Twp. 28-S, R-1-W, of the 6th P.M. Elev. = 136.99(City Datum)
 Elev. = 1344.39(NGVD29)

SE COR. 1/4, SEC. 7, TWP. 28-S, R-1-W