

# SANITARY SEWER RECONSTRUCTION

PAWNEE AND TOPEKA

PROJECT NO. 468-83075

OCA# 620284

## BENCH MARKS

C.O.W. DISK 52' N. OF THE CENTERLINE  
OF PAWNEE AND 40' W. OF THE CENTERLINE  
OF BROADWAY; ELEVATION 98.40

## INDEX OF SHEETS

1. COVER SHEET
2. TRAFFIC CONTROL PLAN
3. SAN. SEWER PLAN/PROFILE
4. SIPHON PROFILE AND DETAILS
5. RCB STORM SEWER DETAILS
6. RC MH DETAIL

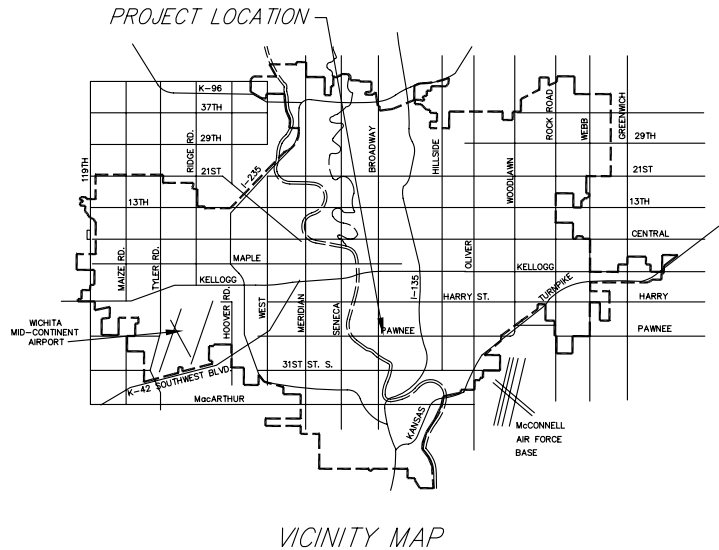
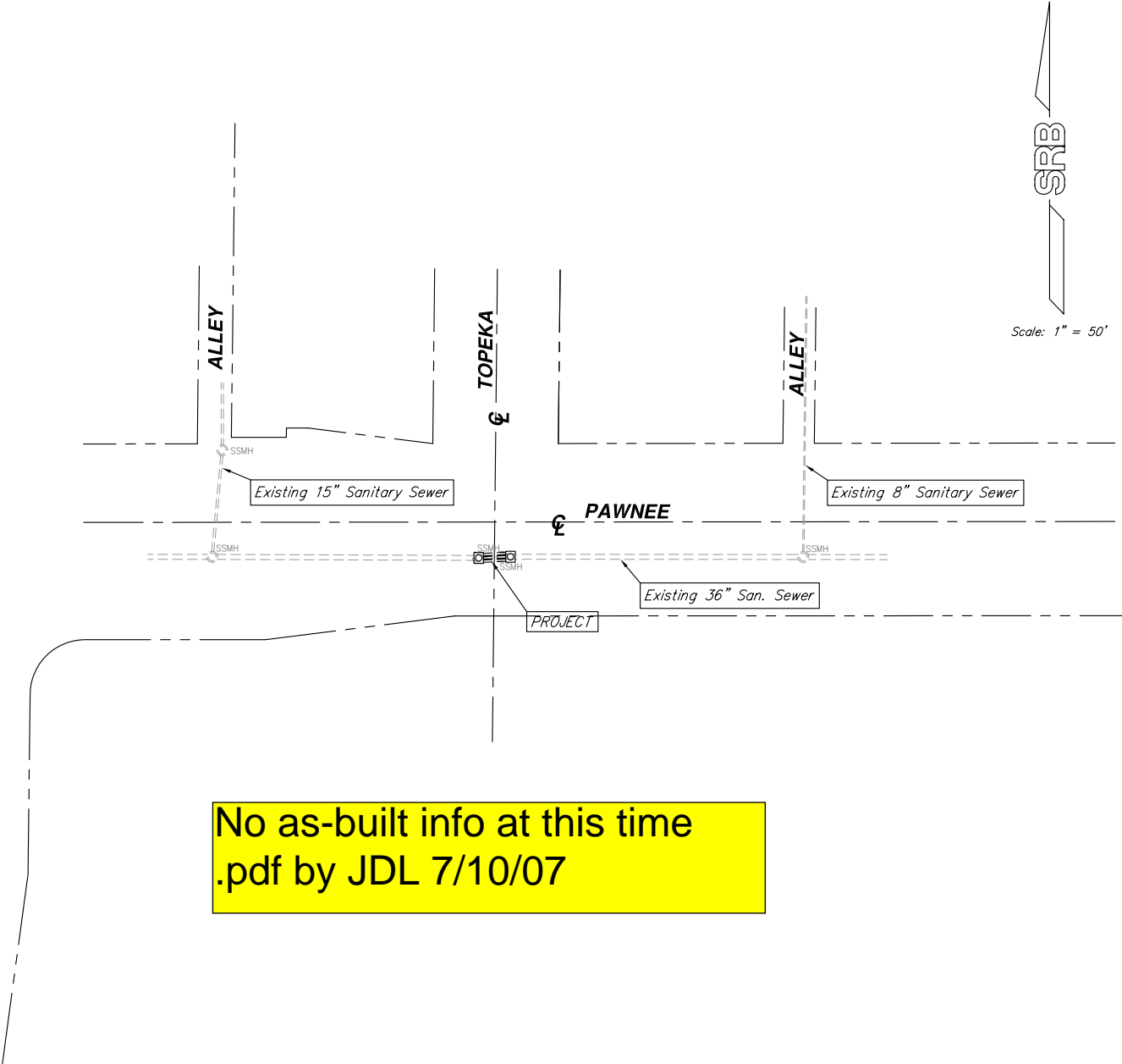
## GENERAL NOTES

1. Contractor will be required to notify Kansas One-Call (687-2470), a minimum of 48 hours in advance of beginning any excavation.

The Contractor must notify the following utility companies in case of an emergency:

Cox Communications	262-0661
Kansas Gas Service	383-8600
KGE Electric	383-8600
Peoples Natural Gas Company	1-800-303-0357
Southwestern Bell Telephone Company	1-800-286-8313
City of Wichita Water Department	262-6000
City of Wichita Sewer Maintenance	262-6000

2. The Contractor shall give all property owners and/or tenants of developed property directly abutting the construction of this project a minimum of ten (10) days advance notice prior to start of construction.
3. The Contractor shall be responsible for preserving property irons. The Contractor will be required to re-establish any property irons which are damaged or destroyed by his construction operations. Such irons shall be re-established by a licensed land surveyor in accordance with state laws.
4. It shall be the responsibility of the Contractor to maintain sewage flow during construction of this project. The Contractor's plan for maintaining sewage flow shall be approved by the Engineer prior to construction.



**CITY OF WICHITA, KANSAS**  
**MICHAEL E. LINDEBAK, P.E. - CITY ENGINEER**

