

SANITARY SEWER PLANS
TO SERVE

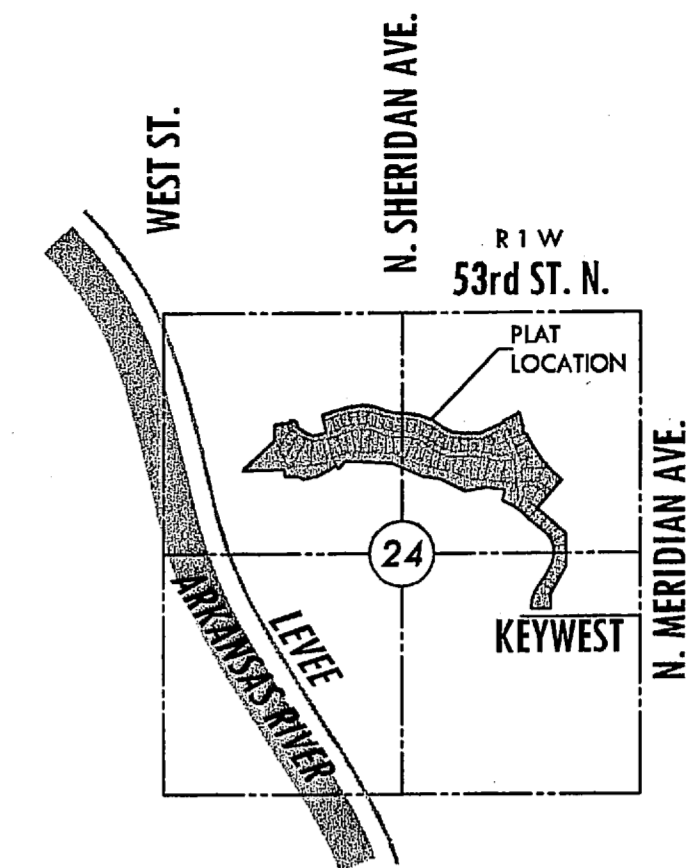
THE MOORINGS TENTH ADDITION

LATERAL 14, MAIN 15, SS #23

AN ADDITION TO THE CITY OF WICHITA
SEDGWICK COUNTY, KANSAS
JAMES L. ARMOUR, P.E., CITY ENGINEER

PROJECT NO. 468-84467
OCA NO. 744276

McCullough Excavation - Contractor
G. Shearer - City of Wichita, Inspector
Date Released: 02/07/2009
As-built
Stubs and Risers
pdf: apr 03/20/2009



VICINITY MAP

GENERAL NOTES

- UNLESS SHOWN OR STATED OTHERWISE ON THESE DRAWINGS, MATERIALS AND CONSTRUCTION SHALL BE IN ACCORDANCE WITH CITY OF WICHITA STANDARD SPECIFICATIONS.
- CONTRACTOR WILL BE REQUIRED TO PROVIDE A MINIMUM ADVANCE NOTICE OF SEVENTY-TWO (72) HOURS TO UTILITY COMPANIES PRIOR TO STARTING ANY EXCAVATION AS FOLLOWS:

KANSAS ONE-CALL 1-800-344-7233
or 687-2470 (LOCAL WICHITA)

THE CONTRACTOR MUST NOTIFY THE FOLLOWING IN CASE OF AN EMERGENCY:

AT&T (TELEPHONE)	800-870-8590
COX COMMUNICATIONS (CABLE)	262-0851
KANSAS GAS SERVICE (GAS)	832-3101
CITY OF WICHITA WATER & SEWER	262-6000
WESTAR (ELECTRIC)	261-6512
AQUILA (GAS)	800-303-0357

- THE CONTRACTOR SHALL BE RESPONSIBLE FOR PRESERVING PROPERTY IRONS. THE CONTRACTOR WILL BE REQUIRED TO RE-ESTABLISH ANY PROPERTY IRONS WHICH ARE DAMAGED OR DESTROYED BY HIS CONSTRUCTION OPERATIONS. SUCH IRONS SHALL BE RE-ESTABLISHED BY A LICENSED LAND SURVEYOR IN ACCORDANCE WITH STATE LAWS.

- EXISTING UTILITIES AND THEIR LOCATIONS, AS SHOWN ON THE PLANS REPRESENT THE BEST INFORMATION OBTAINABLE FOR DESIGN. LOCATION INFORMATION HAS BEEN OBTAINED FROM THE VARIOUS UTILITY COMPANIES AND IS EITHER FROM COMPANY RECORD DRAWINGS OR COMPANY PROVIDED FIELD LOCATIONS. THE PLAN LOCATIONS SHOWN ARE NOT GUARANTEED. ADDITIONAL EXISTING UTILITIES MAY ALSO BE ENCOUNTERED.

- RUBBLE FROM THE REMOVAL OF MISCELLANEOUS STRUCTURES AND EXCESS EXCAVATION WHICH IS TO BE WASTED SHALL BE DISPOSED OF ON SITES TO BE PROVIDED BY THE CONTRACTOR. THESE SITES SHALL BE APPROVED BY THE ENGINEER AS TO SUITABILITY, APPEARANCE AND SITE LOCATION. LOCATIONS THAT, IN THE OPINION OF THE ENGINEER, WILL LEAVE AN UNSIGHTLY APPEARANCE WILL NOT BE APPROVED. ALL DISPOSAL SITES MUST BE APPROVED BY THE KANSAS DEPARTMENT OF HEALTH AND ENVIRONMENT. MATERIAL EITHER STOCKPILED OR DISPOSED OF IN A FLOOD PLAIN WOULD REQUIRE A KANSAS STATE BOARD OF AGRICULTURE PERMIT. ANY MATERIAL DUMPED IN WATERS OF THE UNITED STATES OR WETLANDS IS SUBJECT TO U.S. CORPS OF ENGINEERS PERMITTING REGULATIONS. ANY MATERIAL BURIED OR STOCKPILED BEYOND APPROVED CONSTRUCTION LIMITS WOULD REQUIRE ADDITIONAL APPROVED BORROW LOCATION.

- COST OF EXCAVATION, HAULING, AND DUMPING OF EXCESS EXCAVATION SHALL BE SUBSIDIARY TO THE PROJECT.

- A PORTION OF EXCESS EXCAVATED MATERIAL SHALL BE MOUNDED AROUND MANHOLES WHICH EXTEND MORE THAN ONE (1) FOOT ABOVE THE EXISTING GROUND. SUCH MOUNDS SHALL BE CONSTRUCTED WITH A SIX (6) FOOT DIAMETER FLAT TOP WITH 4 TO 1 SIDE SLOPES DOWN TO THE ORIGINAL GROUND. THE ELEVATION OF THE FLAT TOP OF THE MOUND SHALL BE 0.4 FOOT BELOW THE TOP OF THE MANHOLE.

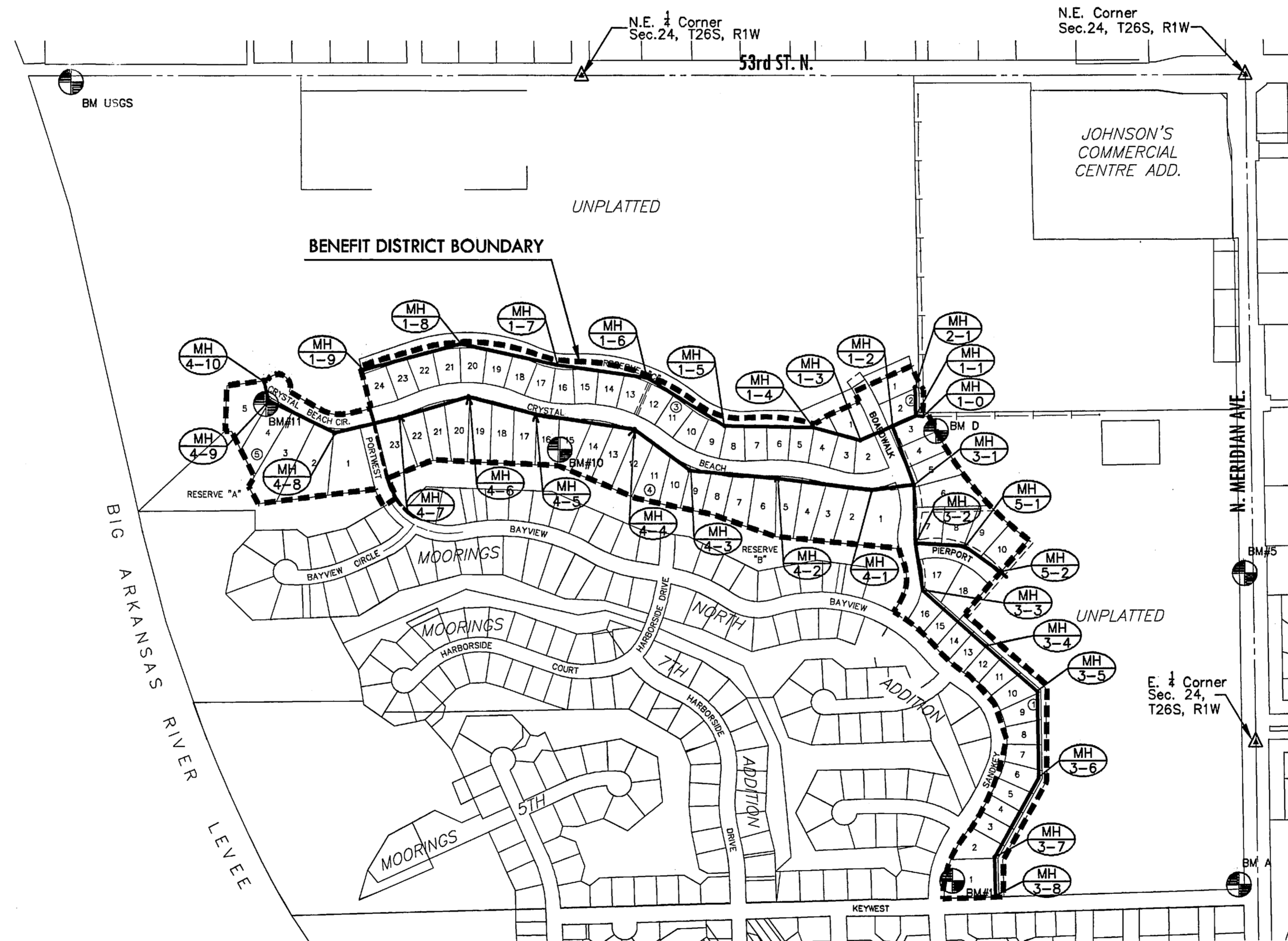
- ALL STUBS AND PLUGGED PIPES SHALL BE LOCATED WITH GREEN PLASTIC TAPE IN THE SAME MANNER AS RISERS.

- CONNECTING TO EXISTING MANHOLES:
PRIOR TO LAYING SEWER LINES USING EXISTING STUBS IN EXISTING MANHOLES, THE CONTRACTOR SHALL EXPOSE AND VERIFY THE ELEVATION, GRADE AND ALIGNMENT OF EXISTING STUBS AND NOTIFY THE ENGINEER OF ANY DEVIATION FROM THE PLAN. WHERE CONNECTION TO AN EXISTING MANHOLE THAT DOES NOT HAVE AN EXISTING STUB OR THE STUB IS UNUSABLE DUE TO ELEVATION GRADE OR ALIGNMENT, THE CONTRACTOR SHALL BORE CUT INTO EXISTING MANHOLE WALL TO MAKE CONNECTION USING APPROVED WATER STOP GASKET, AND RESHAPE THE EXISTING MANHOLE INVERT TO PROVIDE SMOOTH FLOW. THE COST OF CONNECTING TO EXISTING MANHOLES IS INCIDENTAL TO THE PROJECT.

- TREES AND SHRUBS IN PUBLIC RIGHT-OF-WAY WHICH ARE IN DIRECT CONFLICT WITH PROPOSED NEW CONSTRUCTION SHALL BE REMOVED BY THE CONTRACTOR WITH THE ENGINEER'S APPROVAL. TREES AND SHRUBS WHICH ARE NOT IN DIRECT CONFLICT WITH PROPOSED NEW CONSTRUCTION SHALL BE SAVED AND PROTECTED FROM DAMAGE.

- ALL DISTURBED AREAS TO BE SEEDDED WITH RYE GRASS AT A RATE OF 200 LBS. PER ACRE WITHIN 10 DAYS OF CONSTRUCTION. CONTRACTOR TO PREPARE GROUND PER CITY SPECIFICATIONS. COST IS SUBSIDIARY TO SITE PREPARATION AND RESTORATION.

- CONTRACTOR TO COORDINATE CONSTRUCTION OF SANITARY SEWER LINES WITH OTHER CONSTRUCTION ACTIVITIES ON SITE. THIS INCLUDES WATER AND STORM WATER SEWER CONSTRUCTION PROJECTS.



CONSTRUCTION SEQUENCE

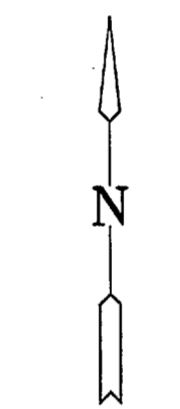
THE CONTRACTOR SHALL ADHERE TO THIS CONSTRUCTION SCHEDULE AND SEQUENCING.

- | | | |
|------------------------------------------------------------------------------------------------------------------------------------------------------------------------------------------------------------------------------------------------------------------------------------------------------------------------------------------------------------------------------------------------------------------------------------------------------|-----------------------------------------------------------------------------------------------------------------------------------------------------------------------------------------------------------------------------------------------------------------------------------------------------------------------------------------------|--|
| <ol style="list-style-type: none"> The Contractor shall begin construction of Sanitary Sewer Project on Line 1 at MH 1-0 and continue construction to MH 1-2. Also the contractor shall remove the abandoned 48" Raw water line. From MH 1-2 the contractor shall construct all sanitary sewer lines running in front yards and risers associated with these lines.
Line 3 (From MH 1-2 to MH 3-3)
Line 4
Line 5 | <ol style="list-style-type: none"> After completion of front yard line contractor shall complete all other lines and risers. Completion Date for all Sanitary Sewer construction is October 10, 2008. Liquidated Damages are per City of Wichita Specifications, or a minimum of \$500 per day, whichever is greater. | |
|------------------------------------------------------------------------------------------------------------------------------------------------------------------------------------------------------------------------------------------------------------------------------------------------------------------------------------------------------------------------------------------------------------------------------------------------------|-----------------------------------------------------------------------------------------------------------------------------------------------------------------------------------------------------------------------------------------------------------------------------------------------------------------------------------------------|--|

INDEX TO DRAWINGS

SHEET NO.	DESCRIPTION
1	TITLE SHEET
2-4	DETAILS
5	LINE 1 & 2
6	LINE 1
7	LINE 1 & 3
8-9	LINE 3
10-12	LINE 4
13	LINE 5
14	BUBBLE MAP
15-19	BMP DETAILS
20-21	PLAT

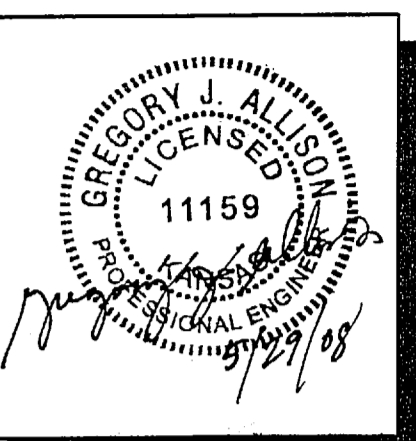
1"=300'



BENCHMARKS

BENCHMARK	DESCRIPTION
BM USGS	USGS gauging station top wall at southeast corner bridge 53rd and Arkansas River; being 29 feet south and 146 feet east of NW corner of the NW corner of Sec. 24, T26S, R1W line of Section Elev.=1353.025 (NDVD 29)
BM A	City of Wichita disc northwest corner of Meridian and Key West Elev. = 1329.36 (NGVD 29)
BM #1	T-post 66 feet south of the northwest corner of Reserve "E" lying 21.7 feet E. of back of curb. Elev. = 1330.76 (NGVD 29)
BM D	T-post 2.8 feet south of the NE corner of Lot 4, Block 2. Elev. = 1329.02 (NGVD 29)
BM #5	Square cut at SW corner of RC8; 46' feet west of centerline of Meridian Ave. and 668' N. of the E 1/4 corner, Sec. 24, T26S, R1W. Elev. = 1328.19 (NGVD 29)
BM #11	T-post S. of the NW corner of Lot 4, Block 5, being 29 feet S. of the back of curb. Elev.=1333.635 (NDVD 29)
BM #10	T-post 100.5 feet S. of the NW corner of Lot 15, Block 4, being 2.0 feet E. of the east line of said Lot 15. Elev.=1332.075 (NDVD 29)

MKEC
ENGINEERING
CONSULTANTS, INC.
411 N. WEBB ROAD
WICHITA, KS. 67206
316-684-9600



LATERAL 14, MAIN 15, SS #23
THE MOORINGS TENTH ADDITION

TITLE SHEET
SHEET TITLE
468-84467
PROJECT NUMBER

DFL / DMU / GJA
DESIGNED / DRAWN / CHECKED

ISSUED
May 2008

REVISED

SHEET NO.
1 of 21