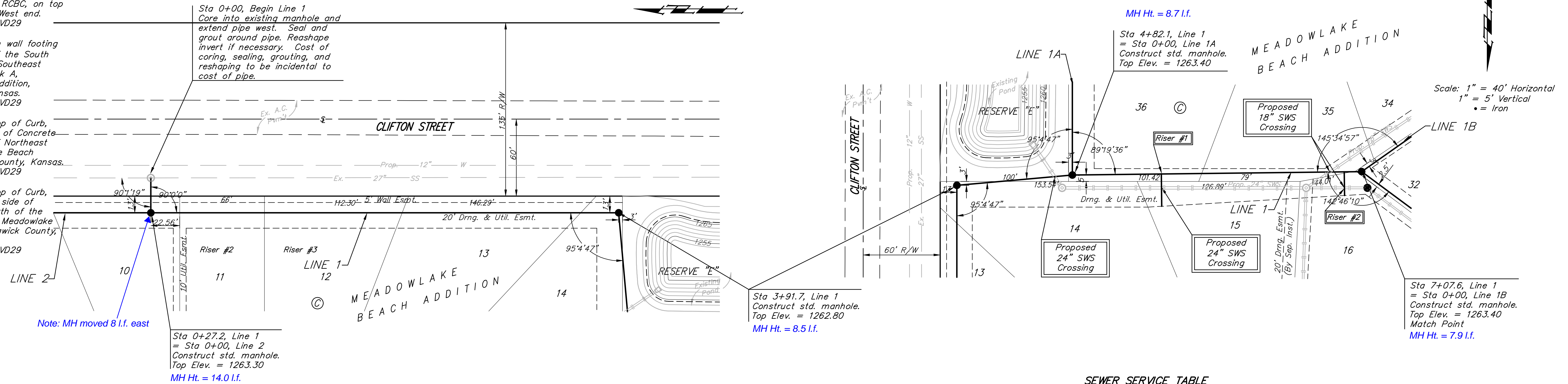


BM #1 - City of Wichita
Benchmark Disc, SE Corner of
Clifton and 55th Street South,
Southwest corner of RCBC, on top
of hubguard at the West end.
ELEV. = 1263.29 NGVD29

BM #2 - "□" Cut on wall footing
located 29' North of the South
end of wall, at the Southeast
corner of Lot 7 Block A,
Meadowlake Beach Addition,
Sedgwick County, Kansas.
ELEV. = 1266.82 NGVD29

BM #3 - "□" Cut Top of Curb,
West side South end of Concrete
street North west of Northeast
corner of Meadowlake Beach
Addition, Sedgwick County, Kansas.
ELEV. = 1262.86 NGVD29

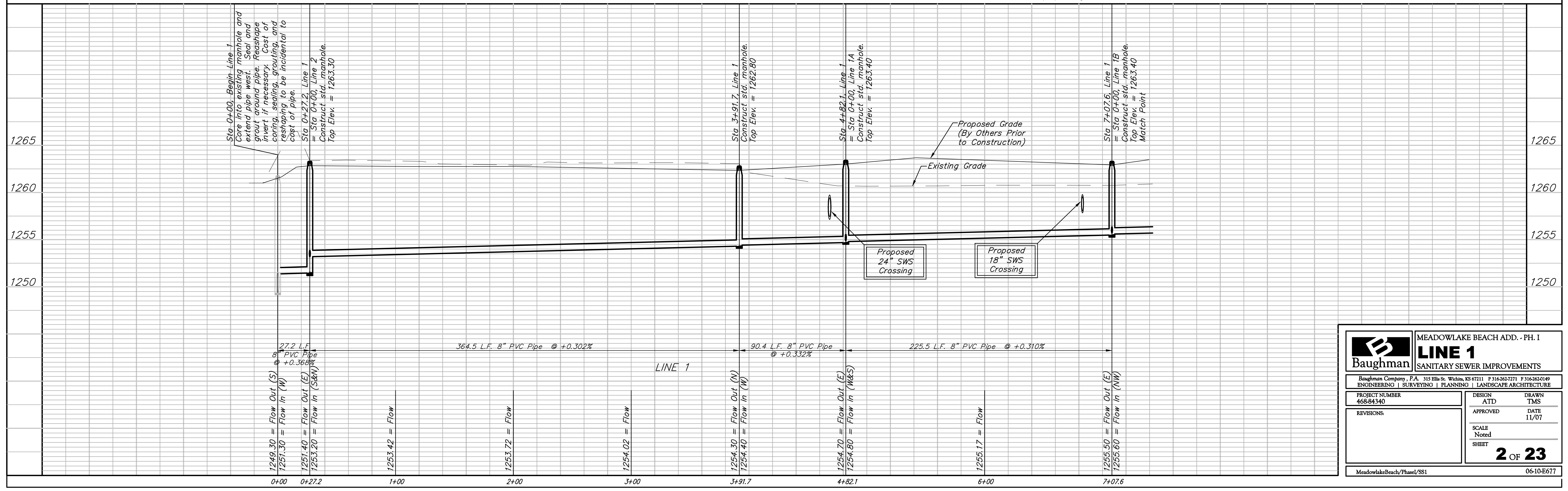
BM #4 - "□" Cut Top of Curb,
East return on East side of
Concrete street North of the
Northwest Corner of Meadowlake
Beach Addition, Sedgwick County,
Kansas.
ELEV. = 1262.95 NGVD29



SEWER SERVICE TABLE

NUMBER	TYPE	LOCATION			STATION DIRECTION	FOR INFORMATION ONLY		Distance from Main to Riser (L/L/Rt.)	Distance from	
		LOT NO.	BLOCK NO.	LINE NO.		APPROXIMATE LENGTH 4" PIPE	Upstream MH		Downstream MH	
1	8" X 4" Tee	15	C	1	5+51/Rt.	-7.0' 5.6'	25.0'	25.2' Rt.	69.8'	155.7'
2	8" X 4" Tee	16	C	1	6+94/Rt.	-6.0' 4.0'	18.5'	18.9' Rt.	211.5'	14.0'

NOTE: Vertical Riser Pipe shall be extended to 2' minimum above ground water elevation and 4' maximum below proposed ground elevation.



Baughman MEADOWLAKE BEACH ADD. - PH. I
LINE 1
SANITARY SEWER IMPROVEMENTS

Baughman Company, P.A. 315 Ellis St. Wichita, KS 67211 P 316-262-7271 F 316-262-0149
ENGINEERING | SURVEYING | PLANNING | LANDSCAPE ARCHITECTURE

PROJECT NUMBER: 468-84340
DESIGN: ATD
APPROVED: TMS
DATE: 11/07

REVISIONS:

SCALE: Noted
SHEET: **2 OF 23**

MeadowlakeBeach/Phase/SS1 06-10-E677