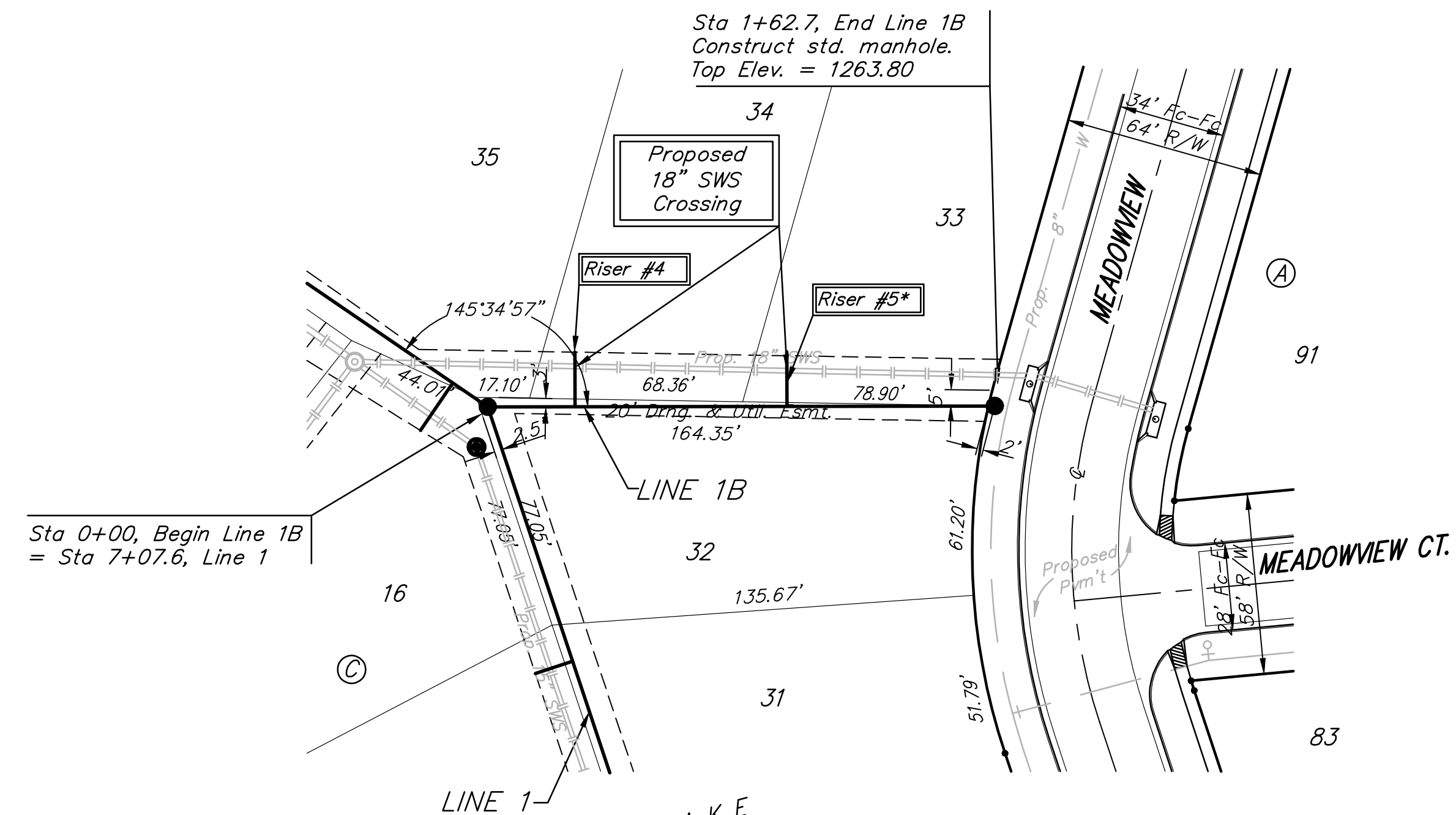


BM #1 - City of Wichita
Benchmark Disc, SE Corner of
Clifton and 55th Street South,
Southwest corner of RCBG, on top
of hubguard at the West end.
ELEV. = 1263.29 NGVD29

BM #2 - "□" Cut on wall footing
located 29' North of the South
end of wall, at the Southeast
corner of Lot 7 Block A,
Meadowlake Beach Addition,
Sedgwick County, Kansas.
ELEV. = 1266.82 NGVD29

BM #3 - "□" Cut Top of Curb,
West side South end of Concrete
street North west of Northeast
corner of Meadowlake Beach
Addition, Sedgwick County, Kansas.
ELEV. = 1262.86 NGVD29

BM #4 - "□" Cut Top of Curb,
East return on East side of
Concrete street North of the
Northwest Corner of Meadowlake
Beach Addition, Sedgwick County,
Kansas.
ELEV. = 1262.95 NGVD29

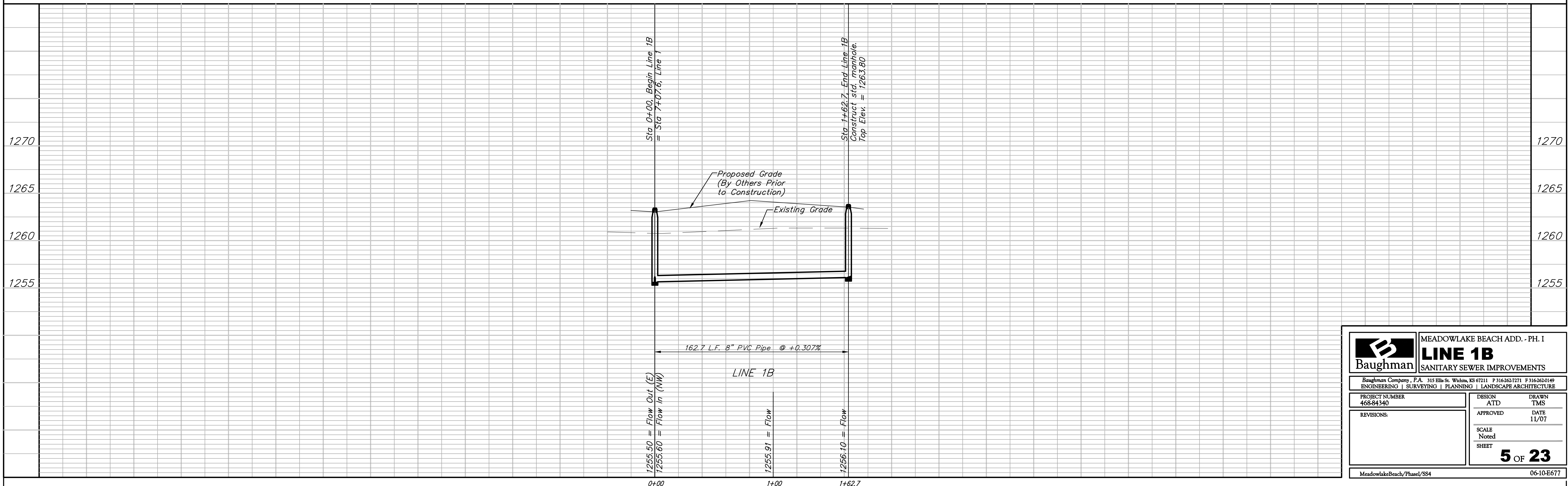


Scale: 1" = 40' Horizontal
1" = 5' Vertical
• = Iron

SEWER SERVICE TABLE

NUMBER	TYPE	LOCATION			STATION\ DIRECTION	FOR INFORMATION ONLY APPROXIMATE LENGTH 4" PIPE		Distance from Main to Riser (Lt./Rt.)	Distance from		
		LOT NO.	BLOCK NO.	LINE NO.		VERTICAL	HORIZONTAL		Upstream MH	Downstream MH	
4	8" X 4" Tee	34	C	1B	0+28/Lt.	-5.5'	5.9'	18.0'	18.3' Lt.	28.3'	134.4'
5*	8" X 4" Tee	33	C	1B	0+96/Lt.	-5.6'	5.1'	18.0'	18.1' Lt.	95.9'	66.8'

NOTE: Vertical Riser Pipe shall be extended to 2' minimum above ground water elevation and 4' maximum below proposed ground elevation. Those marked with an asterisk (*) shall be constructed with flow elevation as low as possible to ensure adequate clearance under proposed storm sewer, and shall be concrete encased (incidental to riser construction).



	MEADOWLAKE BEACH ADD. - PH. I	
	LINE 1B	
SANITARY SEWER IMPROVEMENTS		
<small>Baughman Company, P.A. 315 Ellis St. Wichita, KS 67211 P 316-262-7271 F 316-262-0149 ENGINEERING SURVEYING PLANNING LANDSCAPE ARCHITECTURE</small>		
PROJECT NUMBER 468-84340	DESIGN ATD	DRAWN TMS
REVISIONS:	APPROVED	DATE 11/07
SCALE Noted		SHEET 5 OF 23
<small>MeadowlakeBeach/Phase/SS4</small>		<small>06-10-E677</small>