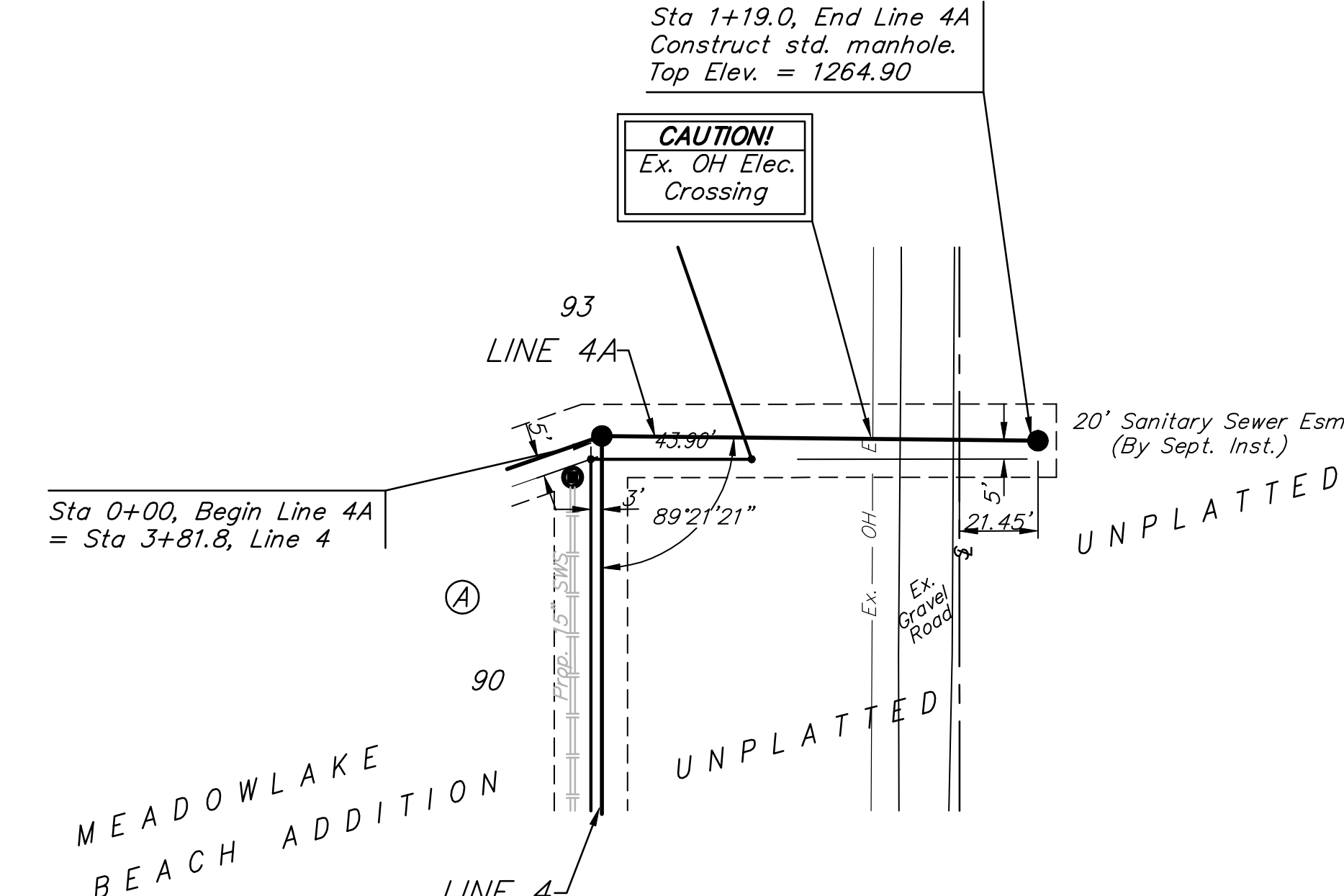
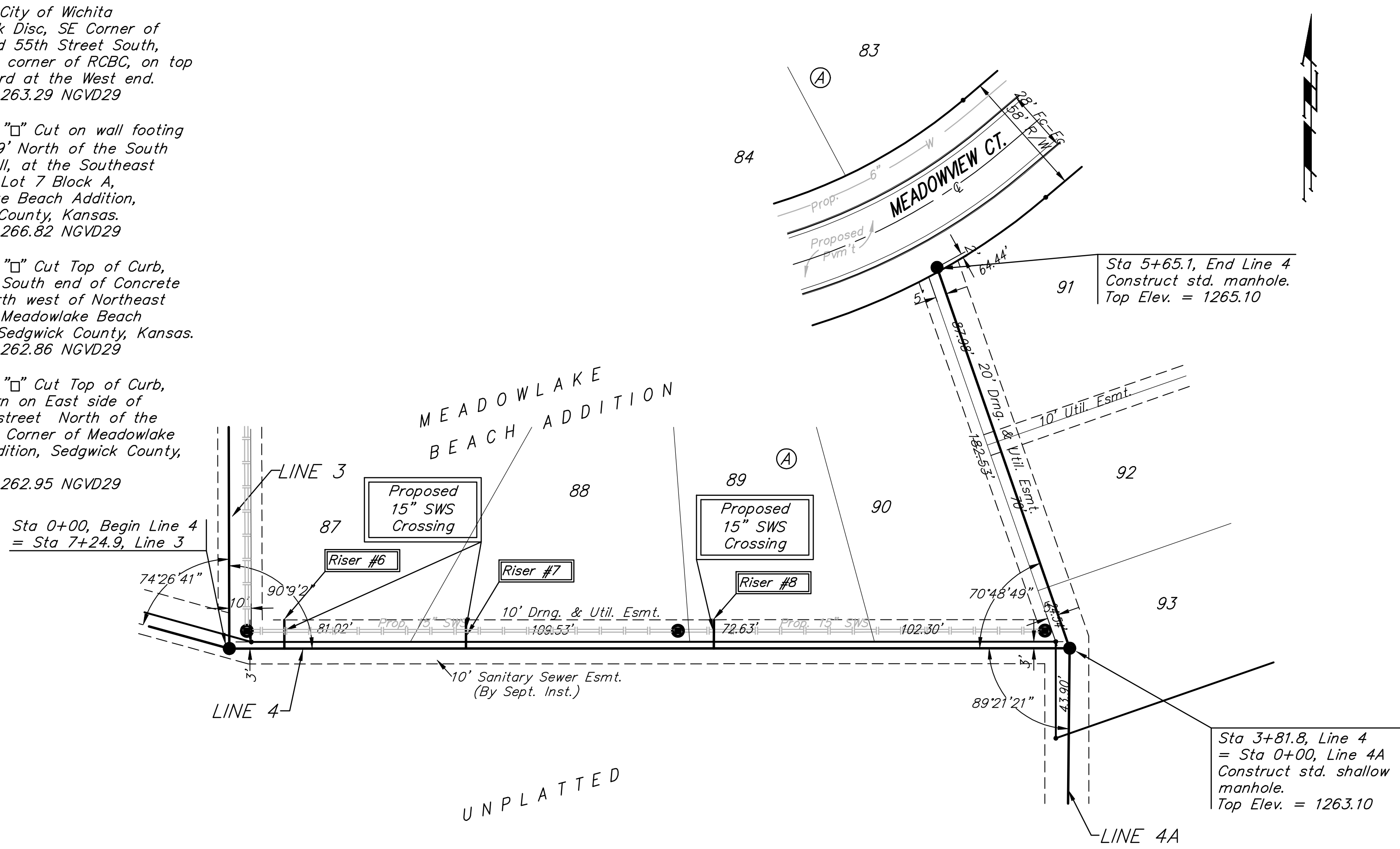


BM #1 - City of Wichita  
Benchmark Disc, SE Corner of  
Clifton and 55th Street South,  
Southwest corner of RCBC, on top  
of hubguard at the West end.  
ELEV. = 1263.29 NGVD29

BM #2 - "□" Cut on wall footing  
located 29' North of the South  
end of wall, at the Southeast  
corner of Lot 7 Block A,  
Meadowlake Beach Addition,  
Sedgwick County, Kansas.  
ELEV. = 1266.82 NGVD29

BM #3 - "□" Cut Top of Curb,  
West side South end of Concrete  
street North west of Northeast  
corner of Meadowlake Beach  
Addition, Sedgwick County, Kansas.  
ELEV. = 1262.86 NGVD29

BM #4 - "□" Cut Top of Curb,  
East return on East side of  
Concrete street North of the  
Northwest Corner of Meadowlake  
Beach Addition, Sedgwick County,  
Kansas.  
ELEV. = 1262.95 NGVD29

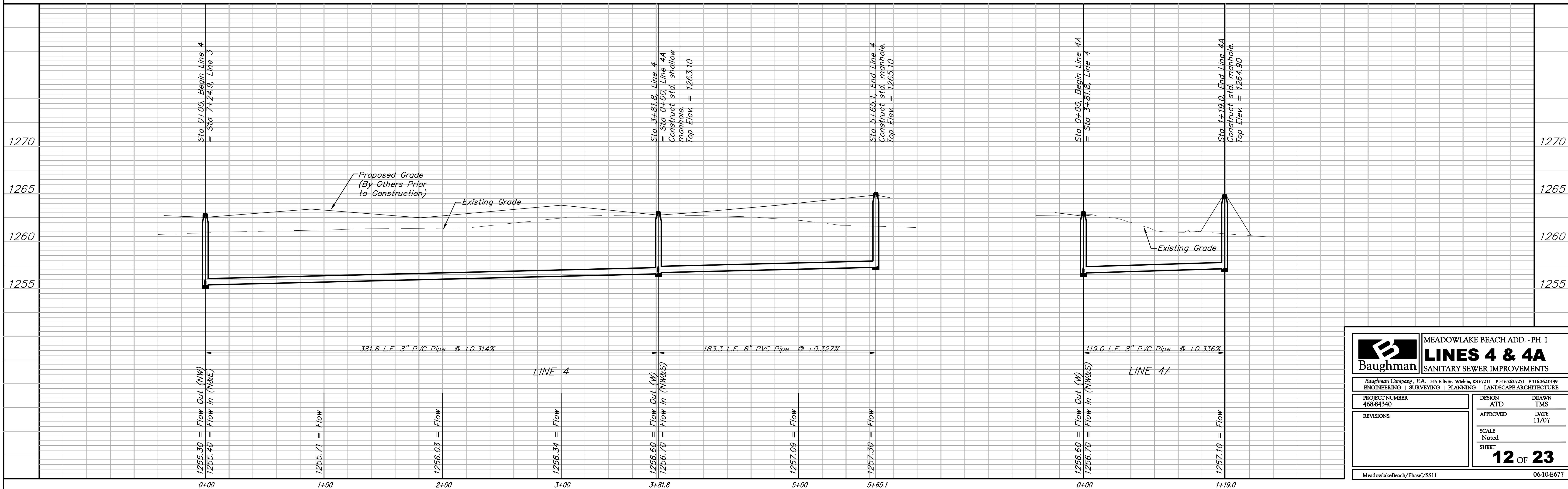


Scale: 1" = 40' Horizontal  
1" = 5' Vertical  
• = Iron

SEWER SERVICE TABLE

Distance from Main to Riser (Lt./Rt.)	Distance from		NUMBER	TYPE	LOCATION				FOR INFORMATION ONLY	
	Upstream MH	Downstream MH			LOT NO.	BLOCK NO.	LINE NO.	STATION \ DIRECTION	APPROXIMATE LENGTH 4" PIPE	VERTICAL
12.8' Lt.	25.1'	356.7'	6	8" X 4" Tee	87	A	4	0+25/Lt.	-7.0' 6.8'	+3.0' 12.8'
13.3 Lt.	112.8'	269.0'	7	8" X 4" Tee	88	A	4	1+13/Lt.	-6.5' 6.4'	+3.0' 13.2'
13.1' Lt.	205.5'	176.3'	8	8" X 4" Tee	89	A	4	2+05/Lt.	-5.0' 5.1'	+3.0' 13.1'

NOTE: Vertical Riser Pipe shall be extended to 2' minimum above ground water elevation and 4' maximum below proposed ground elevation.



**Baughman** MEADOWLAKE BEACH ADD. - PH. I  
**LINES 4 & 4A**  
SANITARY SEWER IMPROVEMENTS

PROJECT NUMBER: 468-84340  
DESIGN: ATD  
DRAWN: TMS  
APPROVED: [Signature]  
DATE: 11/07

SCALE: Noted  
SHEET: **12 OF 23**

MeadowlakeBeach/Phase/SS11 06-10-E677