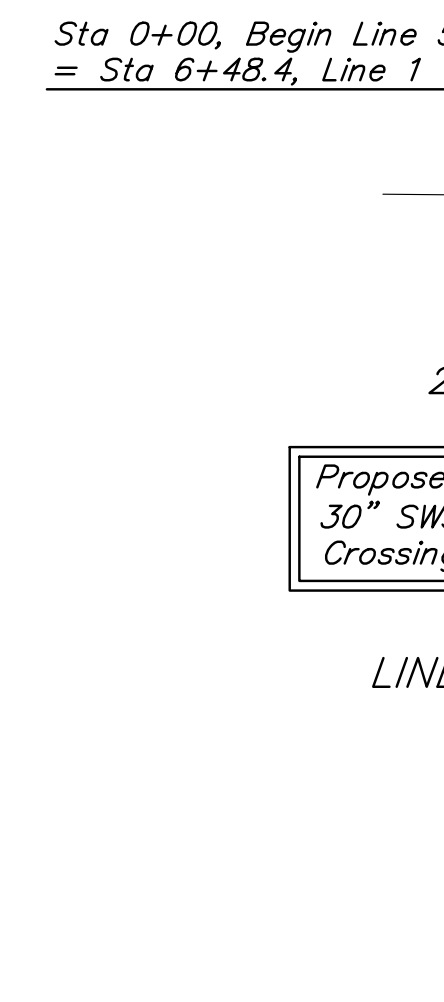
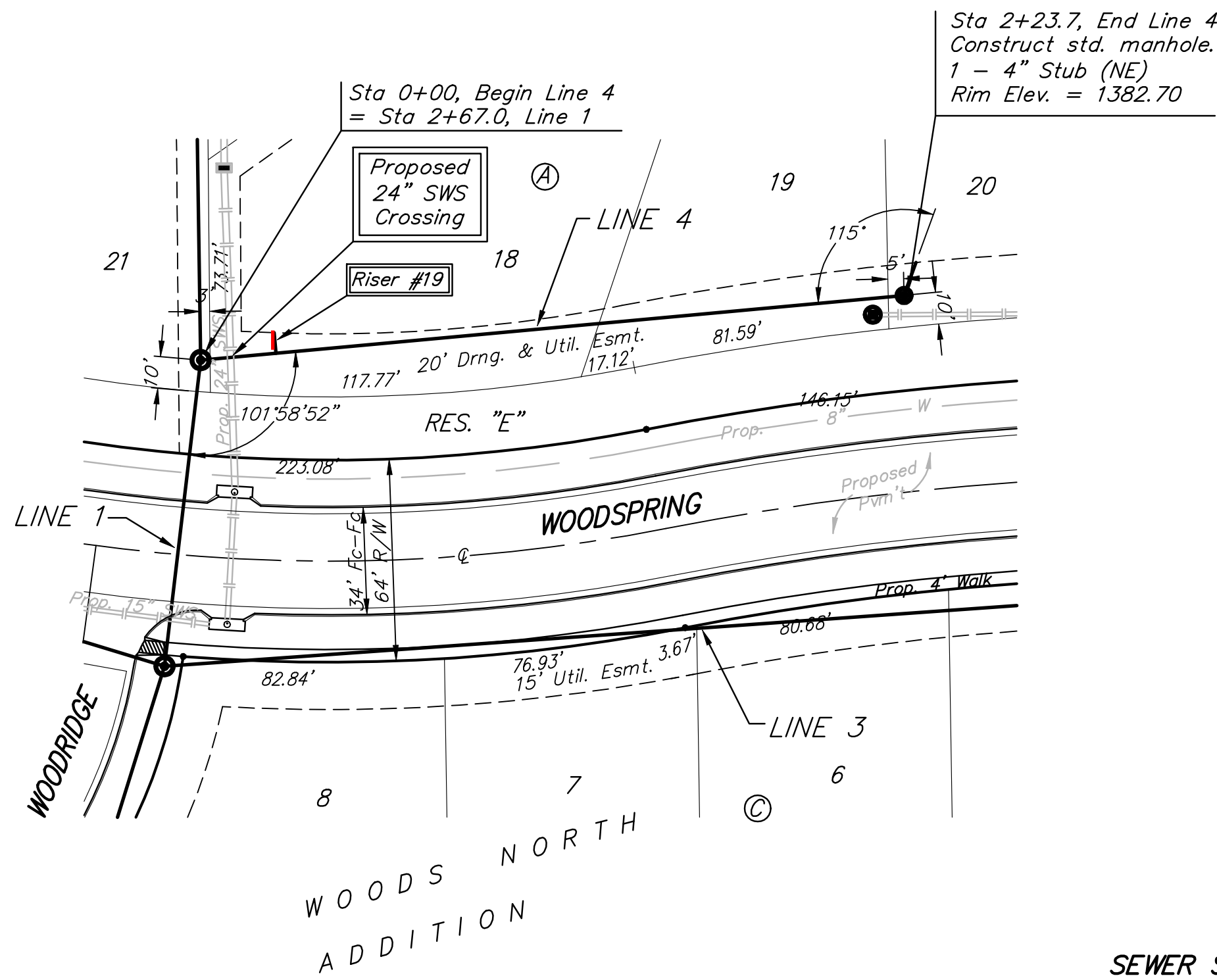


BENCHMARK:
 CROSS CUT ON NORTH
 END OF WEST HEADWALL
 137.5' SOUTH & 12' WEST
 OF THE INTERSECTION OF
 29TH ST N & 127TH ST E.
 ELEV. = 1382.45 NAVD88

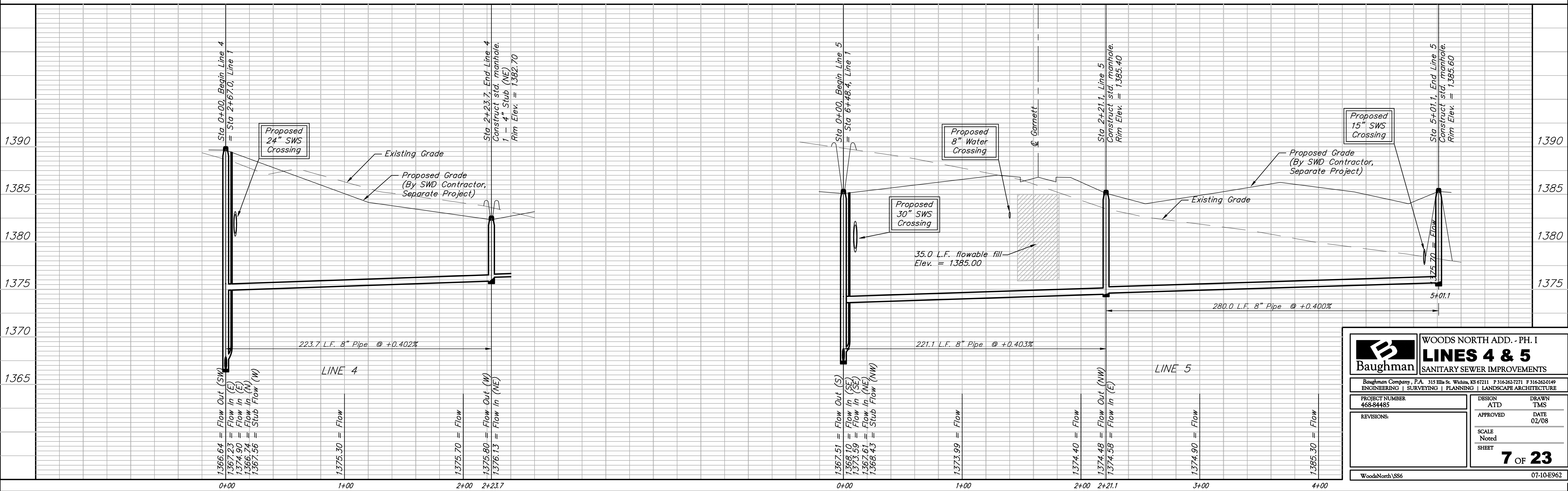


Scale: 1" = 40' Horizontal
 1" = 5' Vertical
 • = Iron

SEWER SERVICE TABLE

NUMBER	TYPE	LOCATION				FOR INFORMATION ONLY		DISTANCE FROM	
		LOT NO.	BLOCK NO.	LINE NO.	STATION \ DIRECTION	APPROXIMATE LENGTH 4" PIPE VERTICAL	HORIZONTAL	UPSTREAM MH	DOWNSTREAM MH
19	8" X 4" Tee	18	A	4	0+24/Lt.	17.0'	6'	199.5'	24'

NOTE: Vertical Riser Pipe shall be extended to 2' minimum above ground water elevation and 4' maximum below proposed ground elevation.



Baughman ENGINEERING | SURVEYING | PLANNING | LANDSCAPE ARCHITECTURE

WOODS NORTH ADD. - PH. I
LINE 4 & 5
 SANITARY SEWER IMPROVEMENTS

PROJECT NUMBER: 468-84485
 DESIGN: ATD
 DRAWN: TMS
 APPROVED: DATE 02/08
 SCALE: Noted
 SHEET: **7 OF 23**

WOODS NORTH VSSG 07-10-E962