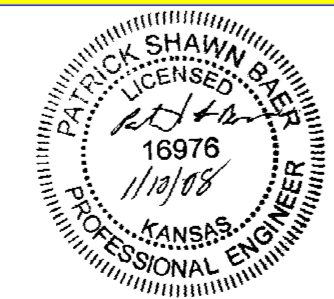


**GENERAL NOTES**

- 1) Contractor will be required to provide a minimum advance notice of seventy-two (72) hours to utility companies prior to starting any excavation as follows:  
 Kansas One-Call 687-2470
- 2) The Contractor must notify the following in case of an emergency:  
 Cox Communications 262-0661  
 Kansas Gas Service 383-8600  
 Westar 383-8600  
 Aquila 1-800-303-0357  
 AT&T 1-800-286-8313  
 City of Wichita Water Department 262-6000  
 City of Wichita Sewer Maintenance 262-6000
- 3) Underground utility service lines and overhead utility pole lines are to be adjusted as necessary by Contractor or unless the plans specifically identify a utility to be adjusted by its owner during construction. Existing utilities and their location, as shown on the plans, represent the best information obtainable for design. Location information has been obtained from the various utility companies and is either from company record drawings or company-provided field locations. The Contractor will be required to work around existing utilities within the right-of-way which do not conflict with proposed construction.
- 4) Rubble from the removal of miscellaneous structures and excess excavation which is to be wasted shall be disposed of on sites to be provided by the Contractor. These sites shall be approved by the Engineer as to suitability, appearance and site location. Locations that, in the opinion of the Engineer, will leave an unsightly appearance will not be approved.
- 5) All disposal sites must be approved by the Kansas Department of Health and Environment. Material either stockpiled or disposed of in a flood plain would require a Kansas State Board of Agriculture permit. Any material dumped in waters of the United States or wetlands is subject to U.S. Corps permitting regulations. Any material buried or stockpiled beyond approved of Engineers construction limits would require additional archeological investigations unless buried in a previously approved borrow location.
- 6) The Contractor shall give all property owners and/or tenants of developed property directly abutting the construction of this project a minimum of ten (10) days advance notice prior to start of construction.
- 7) The Contractor shall be responsible for preserving property irons. The Contractor will be required to re-establish any property irons which are damaged or destroyed by his construction operations. Such irons shall be re-established by a licensed land surveyor in accordance with state laws.
- 8) Contractor will coordinate with Westar Energy to stabilize Power Pole during Construction. Kansas Gas to adjust 4" steel Gas Line prior to construction.
- 9) Remove and replace existing Wood or Metal Chain Link Fence, as required for Construction, cost to be subsidiary to site clearing and restoration.
- 10) Contractor must have one lane of traffic open at all times.
- 11) The contractor shall restore to the original or better condition, adjacent property disturbed by the construction of this project.
- 12) Turf seed used in the restoration of turf areas disturbed by the construction activities shall blend with existing grass cover. Contractor shall prepare seeding area before planting by filling depressions with top soil, then leveling area with a landscape box. Area shall be seeded at rate specified by seed supplier, lightly raked and dragged. Erosion protection shall be applied to slopes 10:1 or steeper. All costs for this work shall be subsidiary to site clearing and restoration.

**Wichita Excavation, Inc. - Contractor**  
**Starcher, City - Inspector**  
 Released 5/14/08  
 As-Built  
 Cleanout Riser  
 .pdf by JDL 5/23/08



# SANITARY SEWER EXTENSION

## Lateral 170, Sanitary Sewer #22

### PROJECT NO. 468-84405

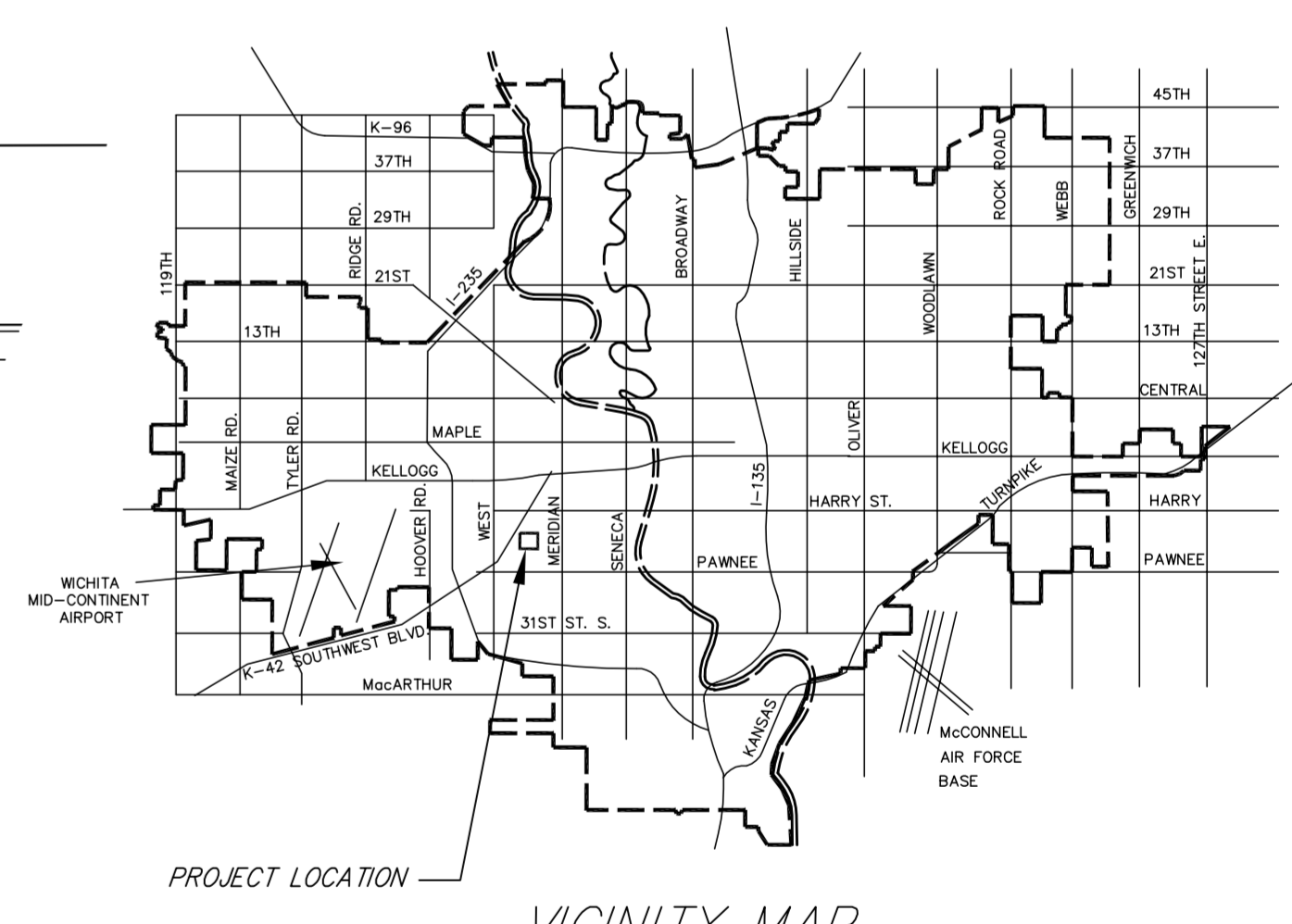
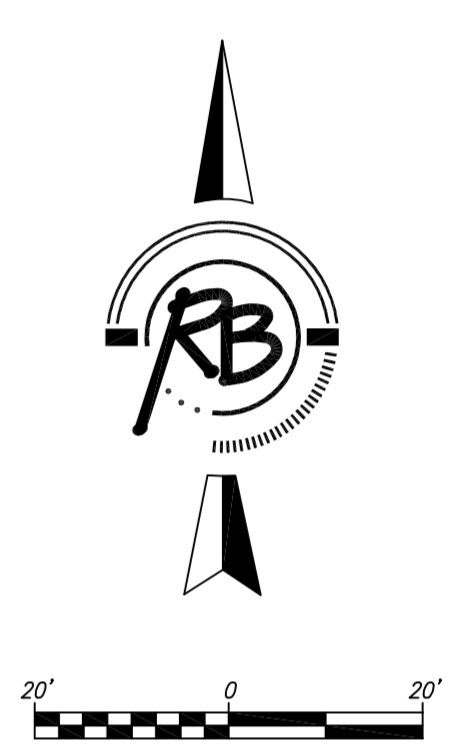
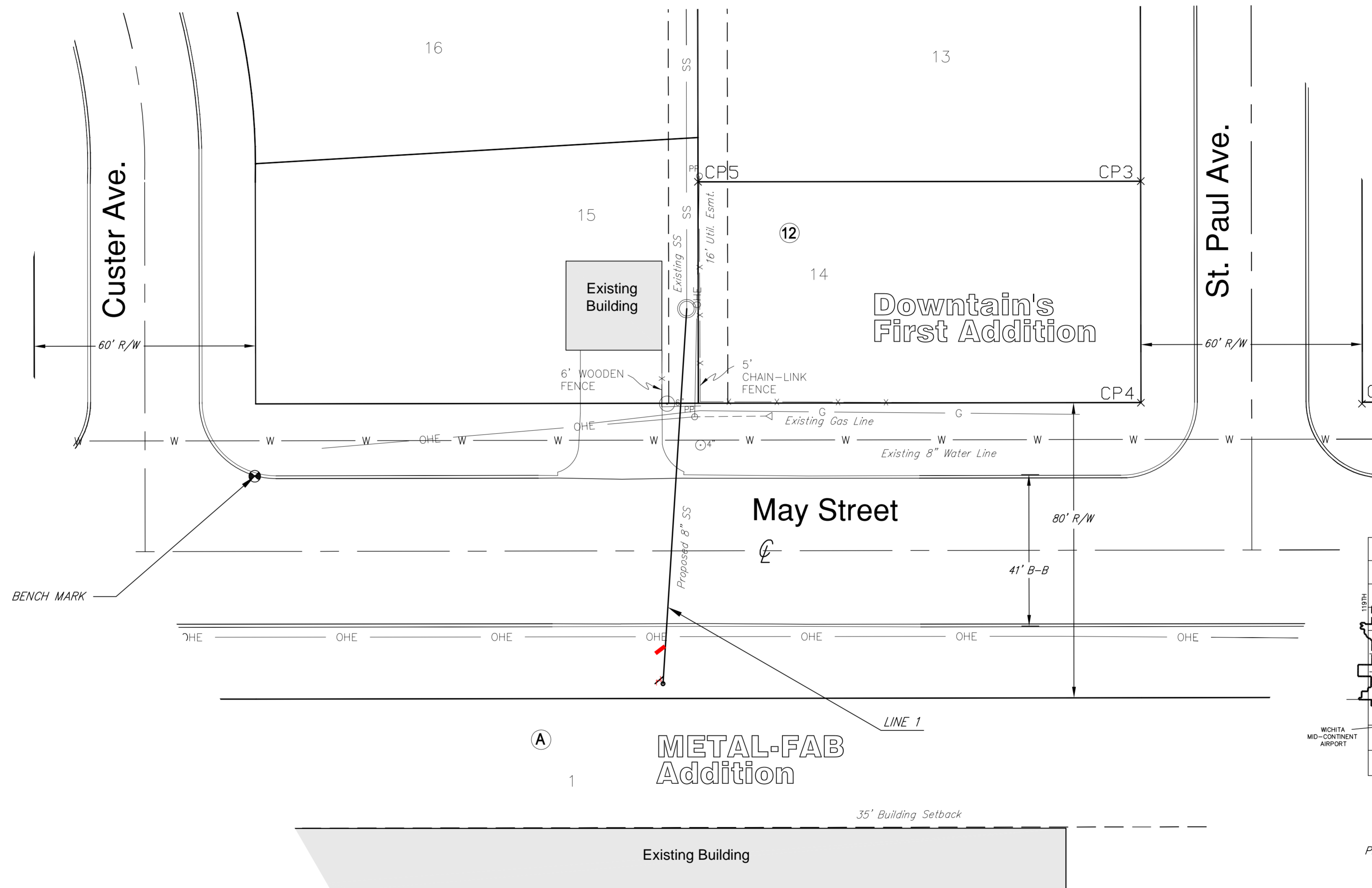
### OCA NO. 744263

**BENCH MARK**

BENCHMARK: E. CURB RETURN, N.E. CORNER  
 MAY STREET AND CUSTER AVE. SQUARE CUT SET.  
 ELEV. 1292.69 NGVD 29

**INDEX OF SHEETS**

1. TITLE SHEET
2. SANITARY SEWER PLAN/PROFILE, RISER DETAILS
- 3-7. BMP EROSION CONTROL DETAILS.



CONTROL POINT TABLE				
POINT NUMBER	NORTHING	EASTING	ELEVATION	DESCRIPTION
CP1	20000.0000	20000.0000	1291.62	PROPERTY CORNER 1/1N IP
CP3	20060.3358	19940.0282	1292.90	PROPERTY CORNER 1/1N IP
CP4	20000.2739	19940.0857	1291.35	PROPERTY CORNER 3/4IP
CP5	20060.1553	19819.9852	1292.49	PROPERTY CORNER 1/1N IP
BM	19980.3449	19699.8381	1292.69	BM "□" CUT ON CURB

## BENEFIT DISTRICT: LOT 1, BLOCK A, METAL-FAB ADDITION

**CITY OF WICHITA, KANSAS**  
**JAMES L. ARMOUR, P.E. - CITY ENGINEER**

**Ruggles & Bohm, P.A.**  
 Engineering, Surveying, Land Planning  
 924 North Main (316) 264-8008  
 Wichita, Kansas 67203 (316) 264-4621 fax  
 www.rbkansas.com E-mail: info@rbkansas.com  
 RB Project 3174X