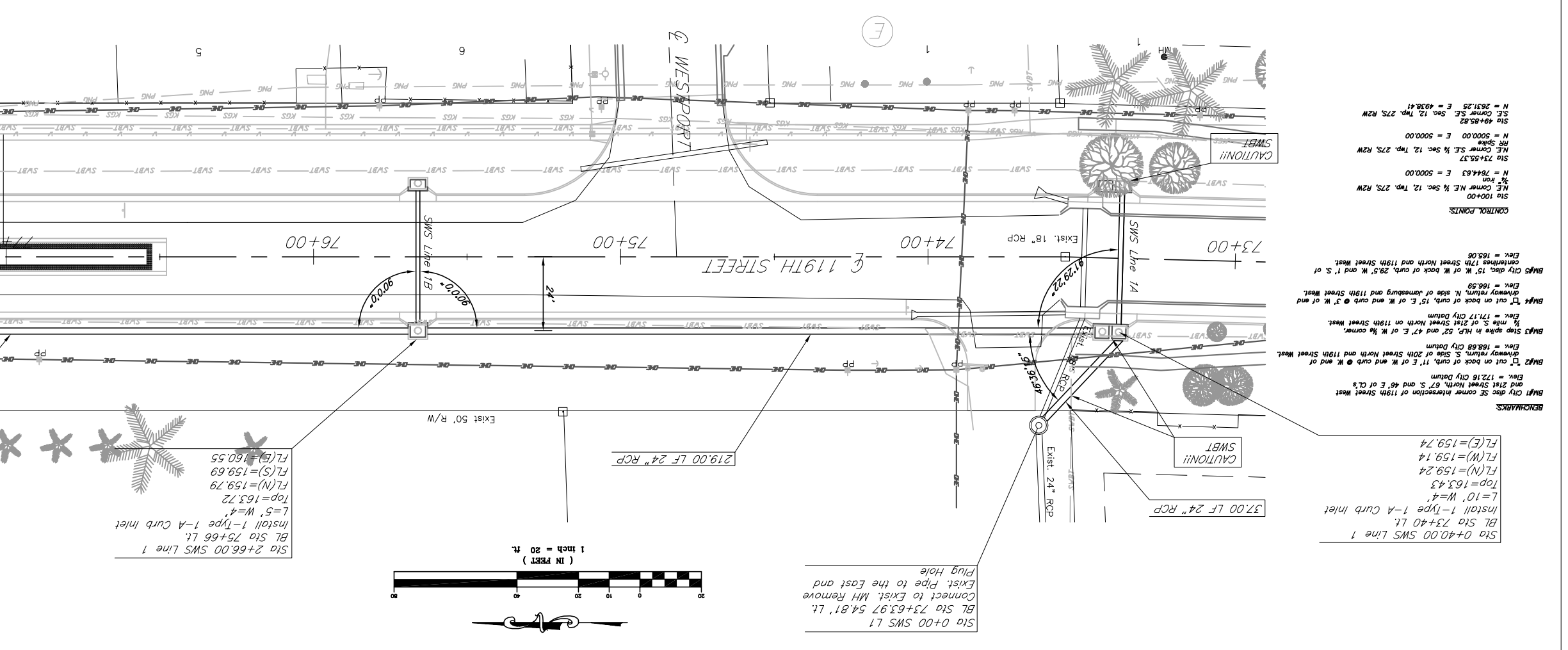
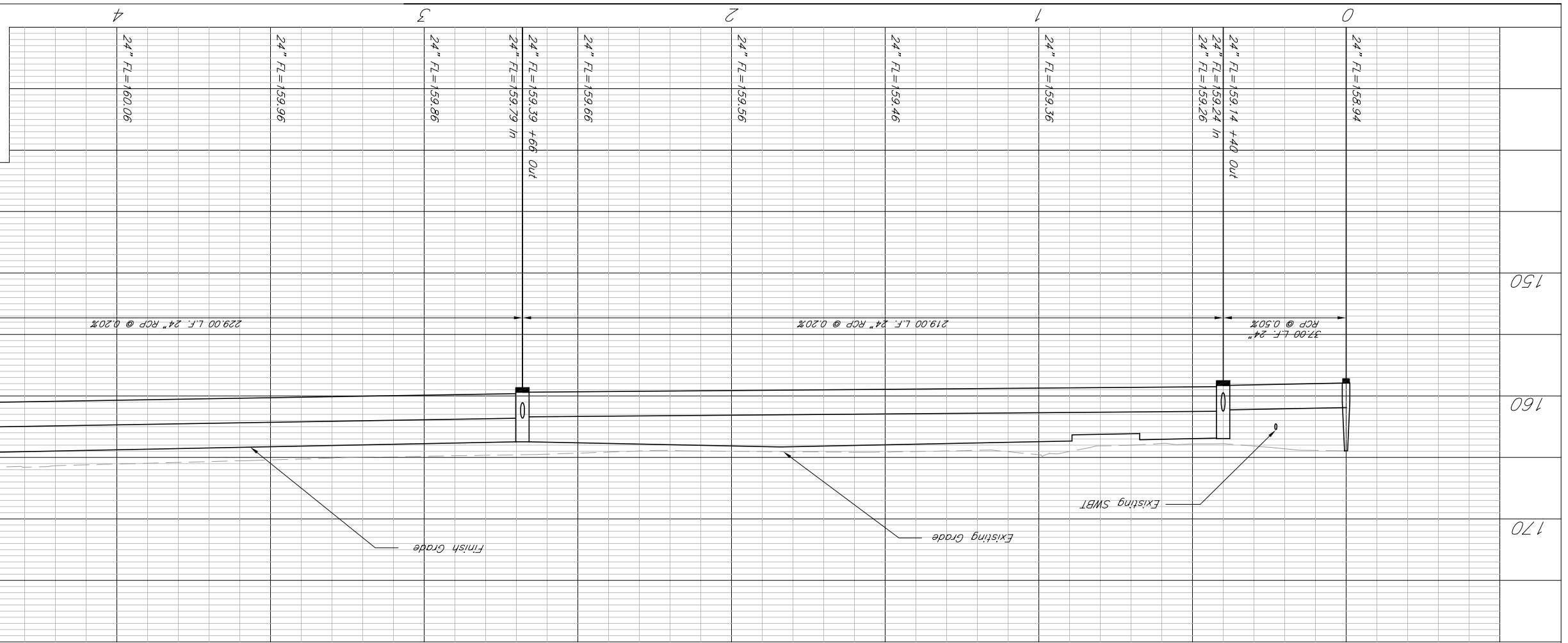


36	OF	3/02	REVISION	TR	DRAWN	RR	DESIGN	RR	316/284-0242		516 S. Market, Wichita, KS 67202
10	SHEET	6/01	DATE	SMST	FILE	KEM NO.	01002	PROJECT NUMBER	472 83890		

150	160	170
-----	-----	-----

7	KANSAS	87 N-0301-01	2003	10	36
FHWA REG NO.	STATE	PROJECT NO.	YEAR	SHEET NO.	TOTAL SHEETS



**BENCHMARKS:**

- BM1 City Sec SE corner intersection of 119th Street West and 21st Street North, 67' S and 46' E of CLS. Elev. = 12216 City Datum
- BM2 "T" cut on back of curb, 11' E of W end curb @ W end of driveway return, S side of 20th Street North and 119th Street West. Elev. = 16868 City Datum
- BM3 Stop spike in H.R. 52' and 47' E of W corner, 1/2 mile S of 21st Street North on 119th Street West. Elev. = 17117 City Datum
- BM4 "T" cut on back of curb, 15' E of W end curb @ 3' W of end driveway return, N side of Janesburg and 119th Street West. Elev. = 16659
- BM5 City Sec. 15' W of W back of curb, 29.5' W and 1' S of centerline 17th Street North and 119th Street West. Elev. = 16500

**CONTROL POINTS:**

- Sta 100+00 NE Corner NE 1/4 Sec. 12, Twp. 27S, R2W N = 7644.63 E = 5000.00
- Sta 73+55.37 NE Corner SE 1/4 Sec. 12, Twp. 27S, R2W N = 5000.00 E = 5000.00
- Sta 49+58.82 S.E. Corner S.E. 1/4 Sec. 12, Twp. 27S, R2W N = 2831.25 E = 4938.41

Sta 0+40.00 SWS Line 1  
 BL Sta 73+40 LT  
 Top=159.24  
 FL(N)=159.24  
 FL(W)=159.14  
 FL(E)=159.74

Sta 2+66.00 SWS Line 1  
 BL Sta 75+66 LT  
 L=5' W=4"  
 Top=163.72  
 FL(N)=159.79  
 FL(S)=159.69  
 FL(B)=160.55

Sta 0+00 SWS L1  
 BL Sta 73+63.97 54.81' LT  
 Connect to Exist. MH Remove  
 Exist. Pipe to the East and  
 Plug Hole

