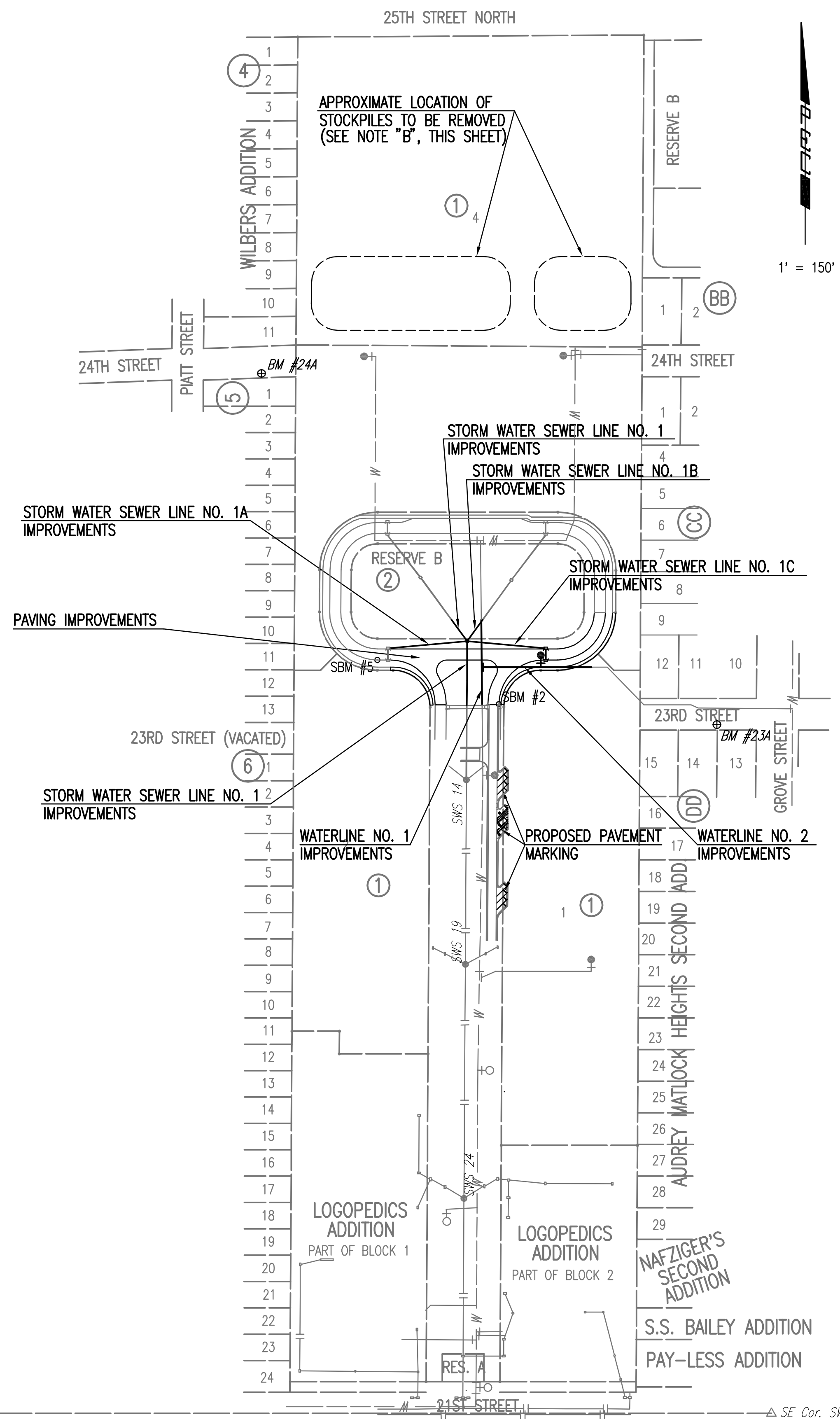


**GENERAL NOTES**

- ALL ELEVATIONS SHOWN ARE CITY OF WICHITA DATUM. (U.S.G.S. - 1187.4 = CITY DATUM)
- CONTRACTOR WILL BE REQUIRED TO PROVIDE A MINIMUM ADVANCE NOTICE OF SEVENTY-TWO (72) HOURS TO UTILITY COMPANIES PRIOR TO STARTING ANY EXCAVATION AS FOLLOWS:  
 KANSAS ONE-CALL 687-2470  
 THE CONTRACTOR MUST NOTIFY THE FOLLOWING IN CASE OF AN EMERGENCY:  
 COX COMMUNICATIONS 262-0661  
 KANSAS GAS SERVICE 832-3169  
 WESTAR ENERGY 383-8600  
 AQUILA NETWORK 1(800)-527-0357  
 SBC 1(800)-870-8390  
 CITY OF WICHITA WATER DEPARTMENT 262-6000  
 CITY OF WICHITA SEWER MAINTENANCE 262-6000
- ALL WATER MAINS AND APPURTENANCES SHALL BE INSTALLED IN ACCORDANCE WITH CITY OF WICHITA, KANSAS, STANDARD SPECIFICATIONS.
- THE WATER MAIN SHALL BE CONSTRUCTED ON THE ALIGNMENT SHOWN BY THE PLANS. TREES AND SHRUBS IN PUBLIC RIGHT-OF-WAY WHICH ARE IN DIRECT CONFLICT WITH PROPOSED NEW CONSTRUCTION SHALL BE REMOVED BY THE CONTRACTOR SUBJECT TO THE ENGINEER'S APPROVAL. TREES AND SHRUBS WHICH ARE NOT IN DIRECT CONFLICT WITH PROPOSED NEW CONSTRUCTION SHALL BE SAVED AND PROTECTED FROM DAMAGE. THE COST FOR ANY NECESSARY TREE TRIMMING, CLEARING AND/OR GRUBBING SHALL BE SUBSIDIARY TO "SITE PREPARATION".
- OPENING AND CLOSING WATER VALVES SHALL BE DONE SLOWLY TO PREVENT DAMAGE TO THE WATER DISTRIBUTION SYSTEM FROM WATER HAMMER. ALL VALVES CLOSED BY THE CONTRACTOR MUST BE REOPENED AS NEW CONSTRUCTION PERMITS. PROJECT INSPECTOR MUST ASCERTAIN THAT ANY VALVE CLOSED BY THE CONTRACTOR IS REOPENED. CONTRACTOR WILL BE PERMITTED TO OPERATE WATER VALVES ONLY WHEN THE PROJECT INSPECTOR ASSIGNED TO THE PROJECT IS PRESENT.
- UNDERGROUND UTILITY SERVICE LINES AND OVERHEAD UTILITY POLE LINES ARE TO BE ADJUSTED AS NECESSARY BY OTHERS PRIOR TO CONSTRUCTION UNLESS THE PLANS SPECIFICALLY CALL FOR THEIR ADJUSTMENT BY THE CONTRACTOR. EXISTING UTILITIES AND THEIR LOCATION, AS SHOWN ON THE PLANS, REPRESENT THE BEST INFORMATION OBTAINABLE FOR DESIGN. LOCATION INFORMATION HAS BEEN OBTAINED FROM THE VARIOUS UTILITY COMPANIES AND IS EITHER FROM COMPANY RECORD DRAWINGS OR COMPANY PROVIDED FIELD LOCATIONS. THE CONTRACTOR WILL BE REQUIRED TO WORK AROUND EXISTING UTILITIES WITHIN THE RIGHT-OF-WAY WHICH DO NOT CONFLICT WITH PROPOSED CONSTRUCTION.
- RUBBLE FROM THE REMOVAL OF MISCELLANEOUS STRUCTURES SHALL BE DISPOSED OF ON SITES TO BE PROVIDED BY THE CONTRACTOR AND APPROVED AS NOTED BELOW.  
 ALL DISPOSAL SITES MUST BE APPROVED BY THE KANSAS DEPARTMENT OF HEALTH AND ENVIRONMENT. MATERIAL EITHER STOCKPILED OR DISPOSED OF IN A FLOOD PLAIN WOULD REQUIRE A KANSAS STATE BOARD OF AGRICULTURE PERMIT. ANY MATERIAL DUMPED IN WATERS OF THE UNITED STATES OR WETLANDS IS SUBJECT TO U.S. CORPS OF ENGINEERS PERMITTING REGULATIONS. ANY MATERIAL BURIED OR STOCKPILED BEYOND APPROVED CONSTRUCTION LIMITS WOULD REQUIRE ADDITIONAL ARCHEOLOGICAL INVESTIGATIONS UNLESS BURIED IN A PREVIOUSLY APPROVED BORROW LOCATION.
- CONTRACTOR SHALL SATISFY HIMSELF OF SURFACE AND SUBSURFACE CONDITIONS PRIOR TO BIDDING.
- THE CONTRACTOR SHALL BE RESPONSIBLE FOR PRESERVING PROPERTY IRONS. THE CONTRACTOR WILL BE REQUIRED TO RE-ESTABLISH ANY PROPERTY IRONS WHICH ARE DAMAGED OR DESTROYED BY HIS CONSTRUCTION OPERATIONS OR COVERED BY 12" OR MORE OF FILL WITH THIS PROJECT. SUCH IRONS SHALL BE RE-ESTABLISHED BY A LICENSED LAND SURVEYOR IN ACCORDANCE WITH STATE LAWS.
- THE WATER DEPARTMENT SHALL FIELD LOCATE WATER VALVES ONE TIME DURING CONSTRUCTION WHEN REQUESTED BY THE CONTRACTOR. IT SHALL BE THE CONTRACTOR'S RESPONSIBILITY TO PRESERVE SUCH FIELD LOCATIONS DURING THE CONSTRUCTION PROCESS. WATER VALVES, WATER VALVE BOXES OR FIRE HYDRANTS DAMAGED DURING CONSTRUCTION SHALL BE REPAIRED BY THE CONTRACTOR AT HIS OWN EXPENSE.
- THE CONTRACTOR SHALL ADJUST WATER VALVE BOXES AS DIRECTED BY THE ENGINEER. THIS WORK TO BE SUBSIDIARY TO OTHER BID ITEMS.

- INLET HOOKUPS AND INLET PROTECTION SHALL BE BID PER EACH REGARDLESS OF INLET SIZE.
- THE CONTRACTOR SHALL APPLY TEMPORARY SEED AND MULCH TO ALL UNPAVED AREAS DISTURBED BY HIS CONSTRUCTION OPERATIONS IN ACCORDANCE WITH THE STANDARD SPECIFICATIONS. SEED SHALL BE ANNUAL RYE APPLIED AT THE RATE OF 4 LBS. PER 1,000 SQUARE FEET. MULCH SHALL BE PRAIRIE HAY APPLIED AT THE RATE OF 15 BALES PER ACRE. THIS WORK SHALL BE PAID FOR AT THE CONTRACT LUMP SUM PRICE BID FOR "TEMPORARY SEEDING".
- CONTRACTOR SHALL APPLY PERMANENT FESCUE SEED, FERTILIZER, AND MULCH TO DISTURBED AREAS WITHIN RESERVE "B" IN ACCORDANCE WITH THE STANDARD SPECIFICATIONS. THIS WORK SHALL BE PAID FOR AS "PERMANENT SEEDING".
- CONTRACTOR SHALL BE RESPONSIBLE TO PROVIDE, ERECT AND MAINTAIN ALL TRAFFIC CONTROL DEVICES IN ACCORDANCE WITH THE MANUAL ON UNIFORM TRAFFIC CONTROL DEVICES (MUTCD) AS SPECIFIED IN THE "WORK ZONE TRAFFIC CONTROL" SECTION OF THE CITY OF WICHITA STANDARD SPECIFICATIONS.
- EROSION CONTROL (BMP'S)  
 THE CONTRACTOR SHALL INSTALL AND/OR MAINTAIN EROSION CONTROL METHODS AS SPECIFIED ON THE EROSION CONTROL PLAN CONTAINED HEREIN. THE FOLLOWING QUANTITIES ARE ESTIMATED, AND SHOULD BE CONSIDERED THE MINIMUM EFFORT REQUIRED. INSTALLATION OF THESE BMP'S DOES NOT RELIEVE THE CONTRACTOR OF THE RESPONSIBILITY OF ABATING SOIL EROSION.  
 CURB INLET PROTECTION 4 EACH  
 AREA INLET PROTECTION 2 EACH  
 CONSTRUCTION ENTRANCE 1 EACH  
 BACK OF CURB PROTECTION 1,219 L.F.  
 SILT FENCE BARRIER 1,300 L.F.
- CONTRACTOR FOR THIS PROJECT IS REQUIRED TO COORDINATE CONSTRUCTION ACTIVITIES AND ACCESS WITH OTHER CONTRACTORS WORKING ON-SITE.



**BENCH MARKS**

- BM#23A- 60D SPIKE IN NORTH FACE OF POWER POLE AT NORTHEAST CORNER OF YARD AT HOUSE #2311 EAST 23RD STREET NORTH. ELEV.=136.01 (C.O.W. DATUM)
- BM#24A- 60D SPIKE IN NORTH FACE OF POWER POLE 100 FEET EAST OF PIATT AVENUE ON SOUTH RIGHT-OF-WAY OF 24TH STREET NORTH. ELEV.=130.22 (C.O.W. DATUM)

**NOTE "A"**

NUMEROUS SMALL TREES HAVE BEEN PLANTED WITHIN THE PROJECT LIMITS SINCE THE FIELD SURVEY WAS COMPLETED. CONTRACTOR SHALL REMOVE AND REPLACE, IN KIND, ALL SUCH TREES WHICH ARE IN CONFLICT WITH CONSTRUCTION. THIS WORK SHALL BE PART OF THE BID ITEM "SITE RESTORATION".

**NOTE "B" (STOCKPILES & WASTE EXCAVATION)**

THE BID ITEM "EXCAVATION (STOCKPILES)" COVERS REMOVAL OF THE EXISTING STOCKPILES FROM THE PROJECT SITE. PAYMENT FOR THIS ITEM SHALL BE BASED ON THE ACTUAL MEASURED QUANTITY OF MATERIAL REMOVED. CONTRACTOR SHALL OBTAIN ACCURATE AS-BUILT CROSS SECTIONS OF THE STOCKPILES AND SUBMIT THE SURVEY NOTES TO THE ENGINEER PRIOR TO MOVING ANY MATERIAL. CROSS SECTIONS SHALL ALSO BE TAKEN ONCE THE MATERIAL HAS BEEN REMOVED, TO ESTABLISH THE BASIS FOR PAYMENT. COSTS FOR THE REQUIRED SURVEY SHALL BE SUBSIDIARY TO THIS BID ITEM.

CONTRACTOR SHALL REMOVE EXISTING SOIL STOCKPILES DOWN TO NATURAL GROUND LEVEL. THE REMOVED MATERIAL SHALL BECOME THE PROPERTY OF THE CONTRACTOR AND SHALL EITHER BE USED ON-SITE TO PROVIDE NECESSARY EMBANKMENT MATERIAL OR SHALL BE DISPOSED OF AT AN OFF-SITE LOCATION TO BE PROVIDED BY THE CONTRACTOR AND APPROVED BY THE ENGINEER.

ANY WASTE EXCAVATION FROM THE PROJECT WHICH IS NOT PART OF THE STOCKPILE MATERIAL SHALL BE REMOVED FROM THE SITE AS NOTED FOR STOCKPILES, BUT SHALL BE SUBSIDIARY TO THIS BID ITEM.

THE QUALITY OF THE STOCKPILED SOIL HAS NOT BEEN ASSESSED. THE STOCKPILES MAY CONTAIN BRUSH AND/OR DEBRIS WHICH IS UNSUITABLE FOR USE AS FILL MATERIAL ON THIS PROJECT.

Served 02-22-2007 8:53:42 AM by BJS  
 Plot Scale 1:150 02-22-2007 9:49:59 AM by REJ  
 J:\SENTOUT\2005\05416\004\2007-02-21 to City DWG\02-KEYMAP

S 1/4 Cor. Sec. 3, T27S, R1E

SE Cor. SW 1/4 Sec. 3, T27S, R1E

No.	Revision	By	Date
21ST STREET KIDS AND FAMILY EMPOWERMENT JARDINE DRIVE-PHASE 2 <b>KEY MAP AND GENERAL NOTES</b> JAMES L. ARMOUR, P.E.- CITY ENGINEER CITY OF WICHITA PROJECT NO. 472-84282 <b>Professional Engineering Consultants, P.A.</b> 303 S. TOPKA • WICHITA, KANSAS 67202 316-262-2691 • FAX 316-262-3003			
Designed by	BDB, BMM	Job No.	35-05416-004
Drawn by	BJS, TAT	Date	October 2005
			Sheet 2 of 32

