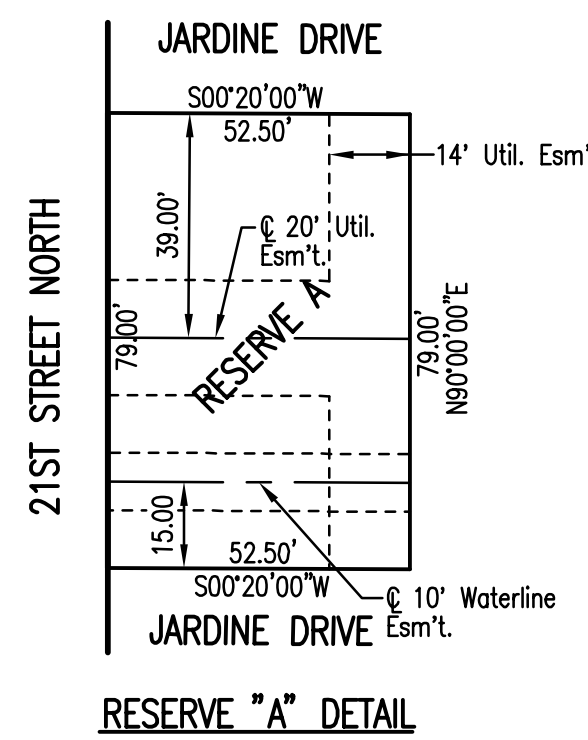
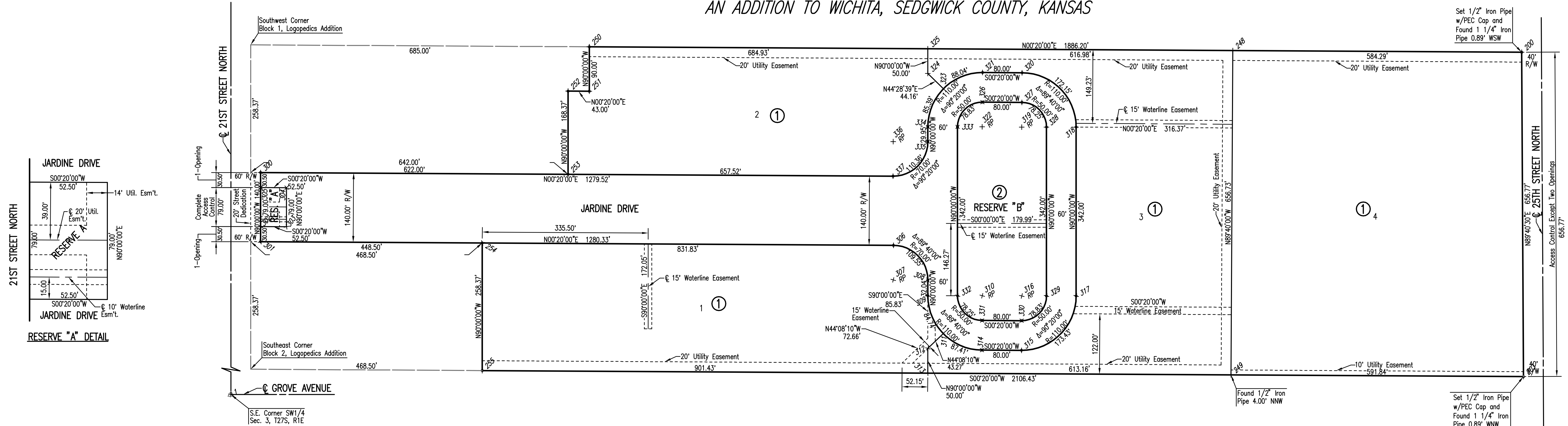


# 21ST STREET KIDS AND FAMILY EMPOWERMENT

## AN ADDITION TO WICHITA, SEDGWICK COUNTY, KANSAS



**LEGEND**  
 • SET 1/2" REBAR W/PEC CAP UNLESS OTHERWISE NOTED

COORDINATE LIST					
POINT	NORTH	EAST	POINT	NORTH	EAST
1	5,000.0000	5,000.0000	314	6,519.2623	4,704.5758
200	7,611.1565	4,101.5586	315	6,599.2573	4,705.0412
203	7,614.8819	4,758.3202	316	6,599.8972	4,595.0431
249	7,023.0561	4,754.8771	317	6,709.8972	4,595.0431
248	7,026.8767	4,098.1593	318	6,709.8972	4,253.0468
250	5,724.9884	4,090.5851	319	6,599.8972	4,253.0468
251	5,724.9884	4,180.5851	320	6,600.5372	4,143.0487
252	5,681.9891	4,180.3350	321	6,520.5422	4,142.5833
253	5,681.9891	4,348.7043	322	6,519.9023	4,252.5814
254	5,508.4921	4,487.6961	323	6,441.4144	4,175.5123
255	5,508.4921	4,746.0656	324	6,409.9023	4,144.5699
300	5,060.0000	4,345.0863	325	6,409.9023	4,094.5699
301	5,060.0000	4,485.0887	326	6,520.1932	4,202.5823
302	5,060.0000	4,454.5875	327	6,600.1881	4,203.0476
303	5,112.5000	4,454.8929	328	6,649.8972	4,253.0468
304	5,112.5000	4,375.8929	329	6,649.8972	4,595.0431
305	5,060.0000	4,375.5875	330	6,599.6063	4,645.0422
306	6,340.3094	4,492.5360	331	6,519.6114	4,644.5768
307	6,339.9023	4,562.5348	332	6,469.9023	4,594.5777
308	6,409.9023	4,562.5348	333	6,469.9023	4,252.5814
309	6,409.9023	4,594.5777	334	6,409.9023	4,252.5814
310	6,519.9023	4,594.5777	335	6,409.9023	4,282.5300
311	6,440.9567	4,671.1780	336	6,339.9023	4,282.5300
312	6,409.9023	4,701.3099	337	6,339.4951	4,352.5289
313	6,409.9023	4,751.3099			

SAVED 02-21-2007 10:25:58 AM BY: RFL  
 PLOT SCALE: 1:100 02-21-2007 4:38:46 PM BY: RFL  
 J:\SENTOUT\2005\05416\004\2007-02-21 TO CITY\DWG\03-PLAT AND HORIZ CONTROL

	Revision		By	Date
No.	21ST STREET KIDS AND FAMILY EMPOWERMENT JARDINE DRIVE-PHASE 2			
<b>PLAT AND HORIZONTAL CONTROL</b>				
JAMES L. ARMOUR, P.E. - CITY ENGINEER CITY OF WICHITA PROJECT NO. 472-84282				
<b>Professional Engineering Consultants, P.A.</b> 303 S. TOPEKA • WICHITA, KANSAS 67202 316-262-2691 • FAX 316-262-3003				
Designed by	BDB, BMM	Job No.	35-05416-004	Sheet 3 of 32
Drawn by	BJS, TAT	Date	October 2005	