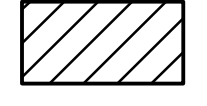
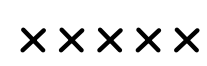


LEGEND

-  PAVEMENT REMOVAL
(Incl. Conc. Pavt. Curb & Gutter, and Sidewalk)
-  EXISTING UTILITY REMOVAL

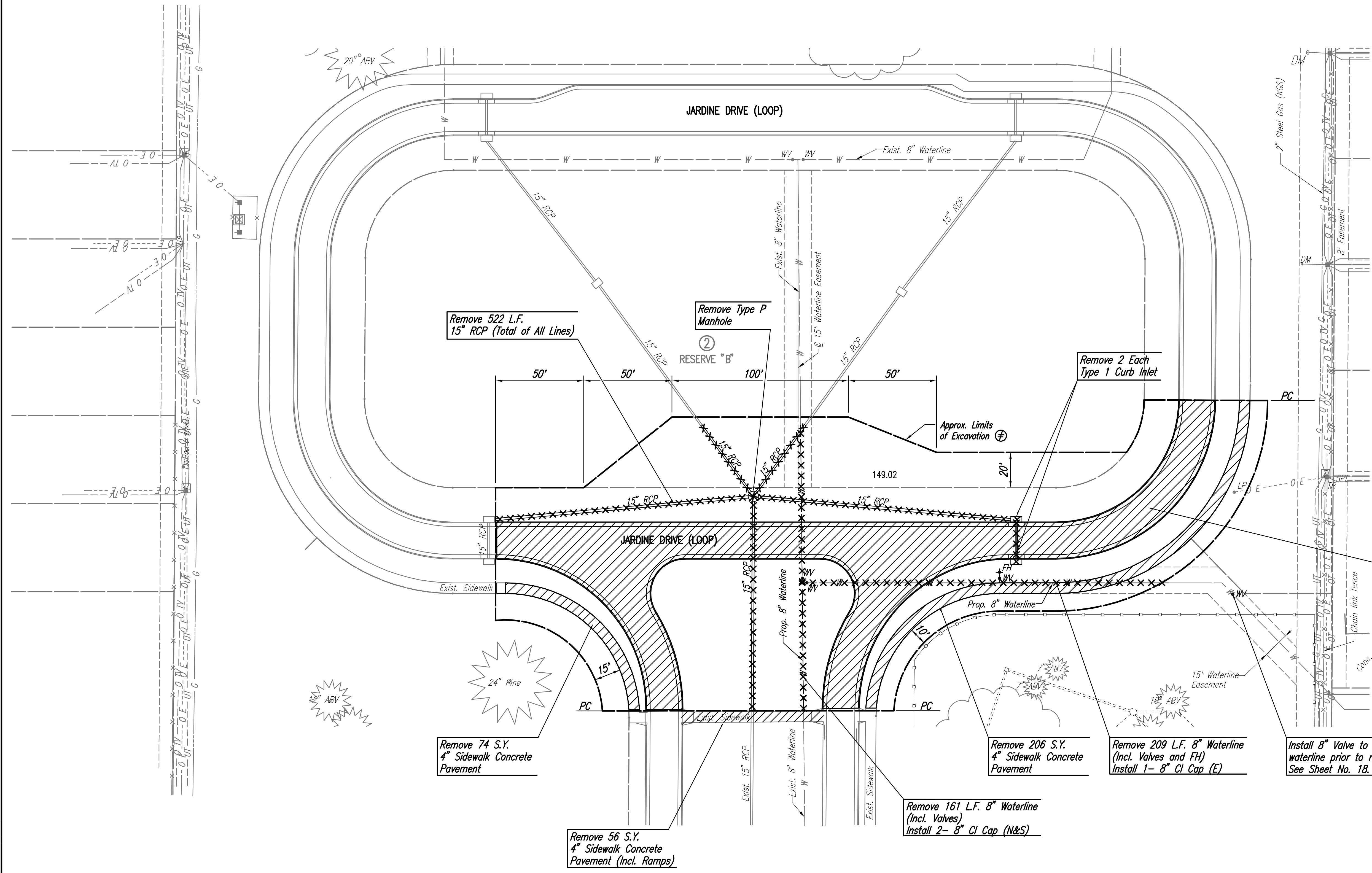
SCALE: 1"=30'

⊕ Contractor Shall Remove Existing Utilities And Excavate Existing Material To A Depth Of 10 Feet (minimum) Within The Indicated Area. The Limits Shown Are Subject To Change As Directed By The Engineer Based On Actual Field Conditions, See Sh. No. 5 For Additional Information.

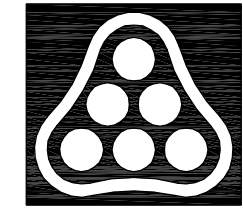
Excavated Material May Be Temporarily Stockpiled Within Reserve B. Upon Project Completion, Reserve B Shall Be Restored To Pre-construction Condition And Grade. The Contractor Shall Be Responsible For Obtaining Accurate As-built Survey Of Reserve B Prior To Stockpiling.

* Removal of Concrete Pavement and Curb and Gutter Shall be Paid for as "Pavement Removal". Removal of Crushed Rock Base Shall be Included in the Bid Item "Excavation".

Remove 1291 S.Y. 8" Concrete Pavement, 1139 L.F. Combined Curb & Gutter, and 1770 S.Y. 8" Reinf. Crushed Rock Base. *



Served 02-21-2007 10:27:58 AM by REJ
 Plot Scale 1:30 02-21-2007 4:38:23 PM by REJ
 J:\SENTOU\2005\05416\004\2007-02-21 to City DMV\04-DEMOLITION PLAN



No.	Revision	By	Date
21ST STREET KIDS AND FAMILY EMPOWERMENT JARDINE DRIVE-PHASE 2 DEMOLITION PLAN JAMES L. ARMOUR, P.E.- CITY ENGINEER CITY OF WICHITA PROJECT NO. 472-84282 Professional Engineering Consultants, P.A. 303 S. TOPKA • WICHITA, KANSAS 67202 316-262-2691 • FAX 316-262-3003			
Designed by	BDB, BMM	Job No.	35-05416-004
Drawn by	BJS, TAT	Date	October 2005
			Sheet 4 of 32