

**GENERAL NOTES**

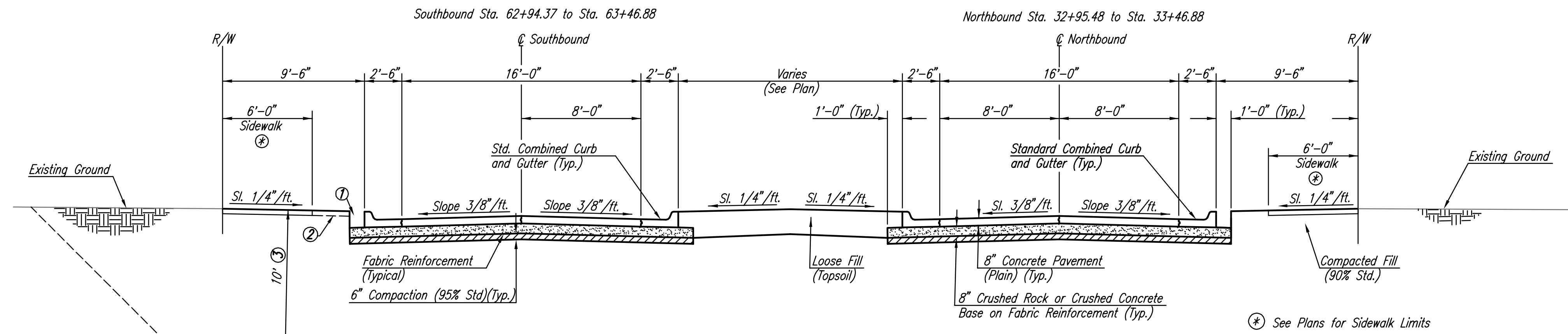
FABRIC BASE REINFORCEMENT SHALL BE B X 1100 GEOGRID AS MANUFACTURED BY TENSAR CORPORATION OR APPROVED EQUAL. FABRIC BASE REINFORCEMENT SHALL BE INSTALLED IN ACCORDANCE WITH MANUFACTURER'S RECOMMENDATIONS.

ROCK BASE IS TO BE COMPACTED AND SMOOTHED WITH A STEEL FACED ROLLER PRIOR TO PLACEMENT OF ASPHALT. TACK COAT WILL NOT BE APPLIED TO ROCK BASE.

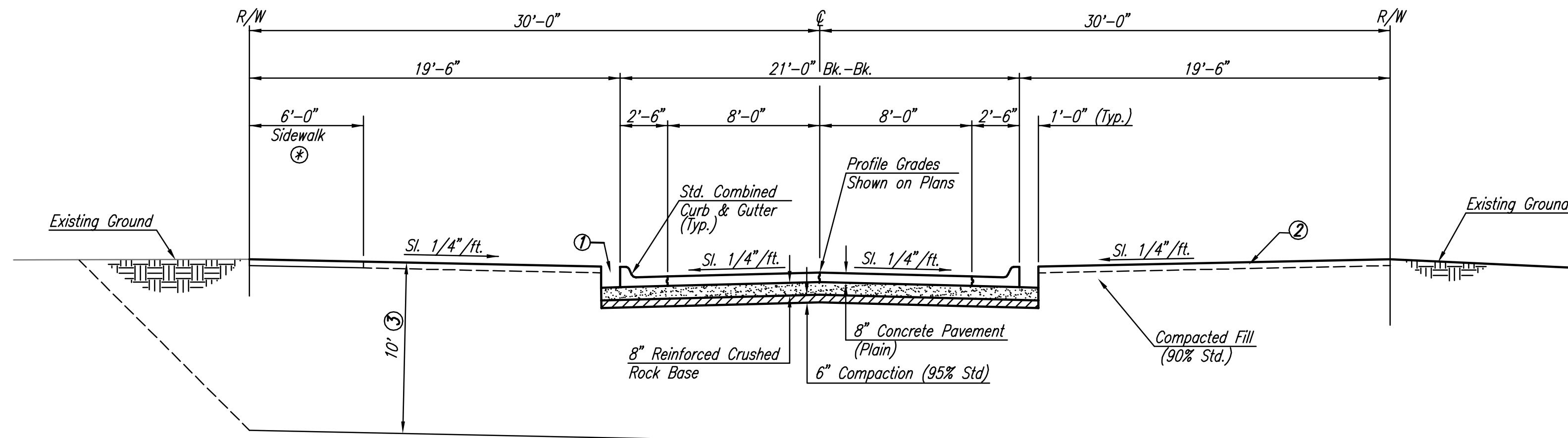
THE CONCRETE PAVEMENT BETWEEN THE COMBINED CURB AND GUTTER SHALL BE PAID AS SQUARE YARDS OF 8" CONCRETE PAVEMENT (PLAIN).

CRUSHED ROCK GRADATION REQUIREMENTS	PERCENT OF AGGREGATE RETAINED
2-1/2"	0
3/4"	20-60
#4	50-80
#40	80-94
#200	90-98

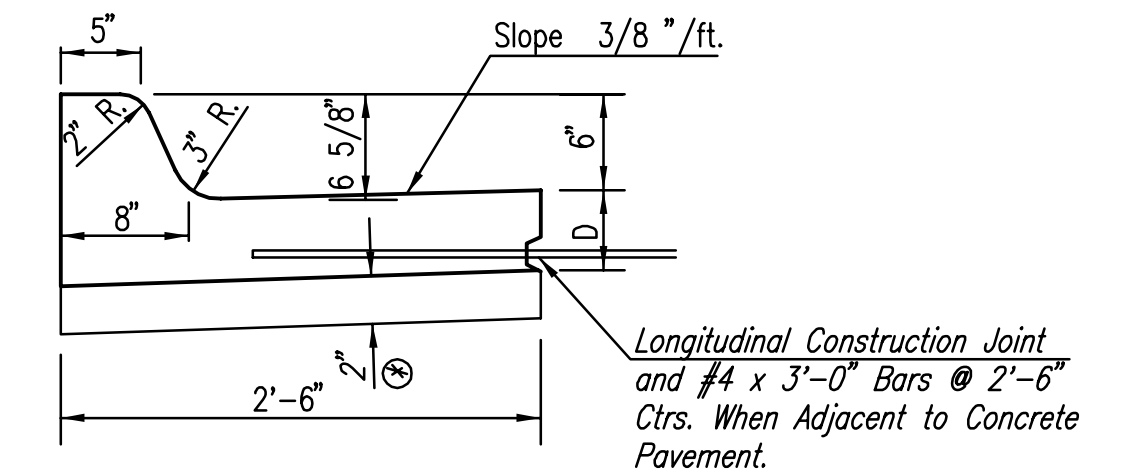
ROCK QUALITY SHALL CONFORM TO THE REQUIREMENTS SPECIFIED BY THE KDOT 1990 EDITION STANDARD SPECIFICATION SUBSECTION 1102 FOR DURABILITY CLASS I



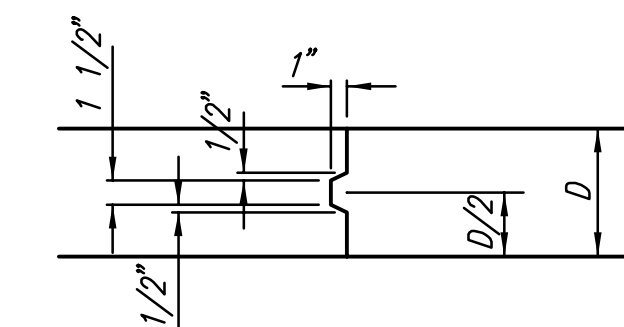
**TYPICAL SECTION**  
Jardine Drive



**TYPICAL SECTION**  
Jardine Drive (Loop)  
Sta. 78+79.45 to Sta. 80+04.64  
Sta. 81+38.43 to Sta. 82+14.90



**COMBINED CURB & GUTTER**  
(6 5/8")



**KEYWAY DETAIL**

- ① BACKFILL BEHIND CURBS WITH TOPSOIL. THIS WORK SHALL BE SUBSIDIARY TO "EXCAVATION".
- ② STRIP ALL TOPSOIL MATERIAL WITHIN THE PROJECT GRADING LIMITS, AND STOCKPILE FOR SUBSEQUENT RE-USE. THE TOP 4" OF ALL EMBANKMENTS OUTSIDE PAVEMENT AREAS SHALL BE COMPOSED OF THE SALVAGED TOPSOIL MATERIAL. STRIPPING, STOCKPILING, AND RE-APPLICATION OF THE TOPSOIL SHALL NOT BE PAID FOR SEPARATELY.
- ③ EXCAVATE EXISTING SOIL TO A MINIMUM DEPTH OF 10 FEET. SEE SH. NO. 4 FOR APPROXIMATE LIMITS OF EXCAVATION. REPLACE WITH CLEAN ON-SITE SOIL IN MAX. 12" LIFTS AND COMPACT TO 95% STD. DENSITY. (TESTING TO BE PROVIDED BY CITY OF WICHITA FORCES.)

No.	Revision	By	Date
21ST STREET KIDS AND FAMILY EMPOWERMENT JARDINE DRIVE-PHASE 2			
<b>TYPICAL PAVEMENT SECTIONS</b>			
JAMES L. ARMOUR, P.E.- CITY ENGINEER CITY OF WICHITA PROJECT NO. 472-84282			
<b>Professional Engineering Consultants, P.A.</b> 303 S. TOPEKA • WICHITA, KANSAS 67202 316-262-2691 • FAX 316-262-3003			
Designed by	BDB, BMM	Job No.	35-05416-004
Drawn by	BJS, TAT	Date	October 2005
			Sheet 5 of 32