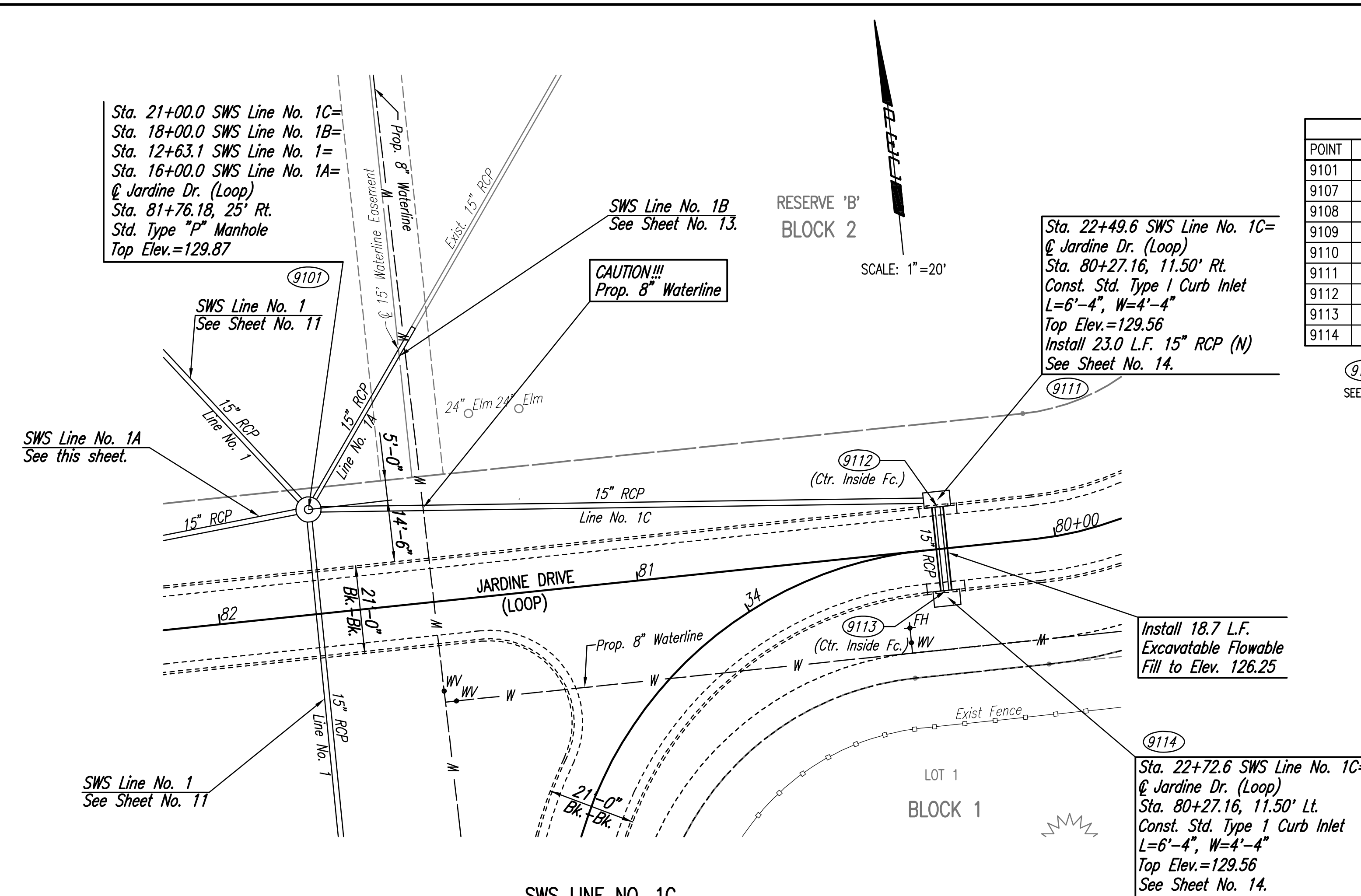
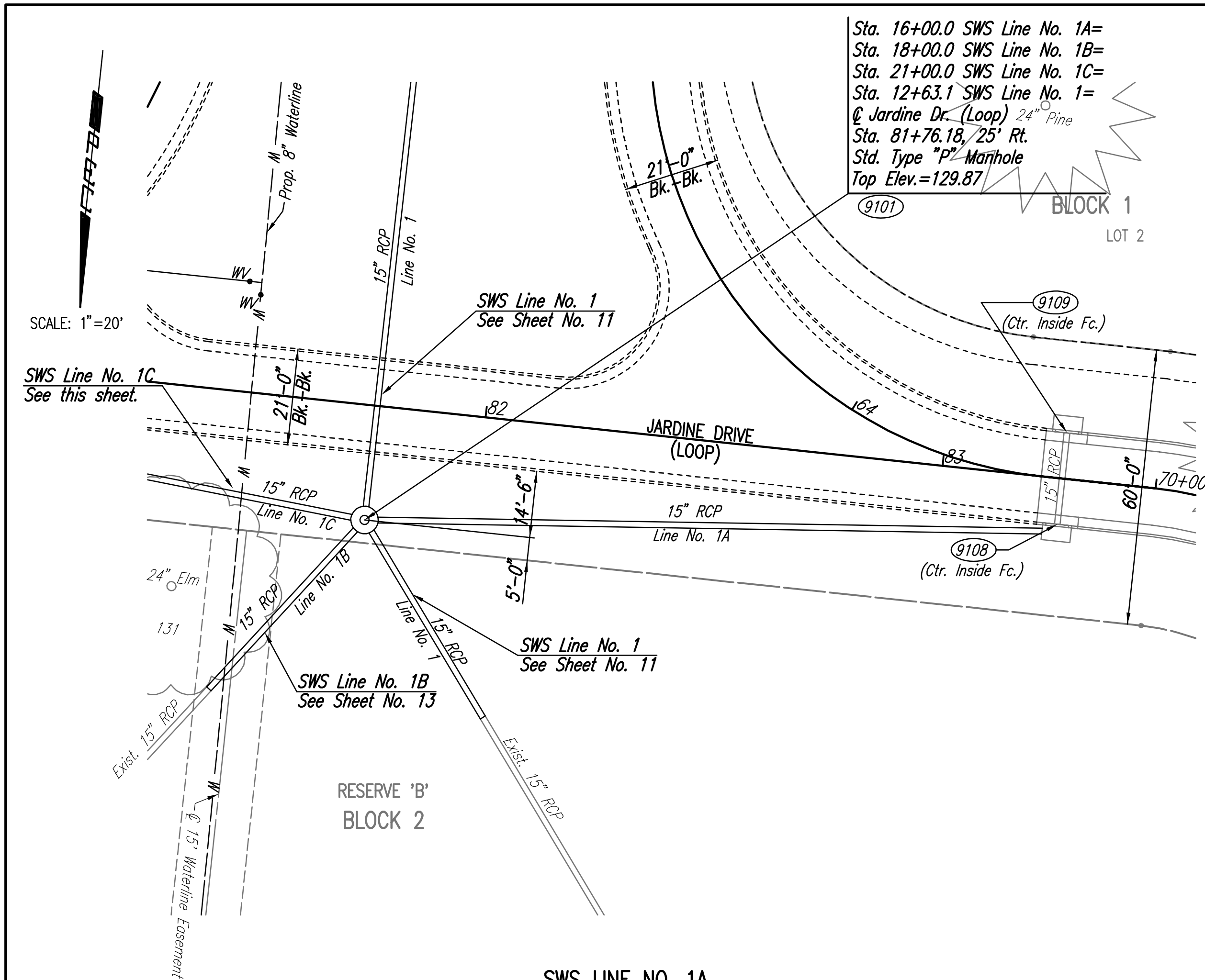


PLAN	CHECKED	CHECKED
BY		
DATE		

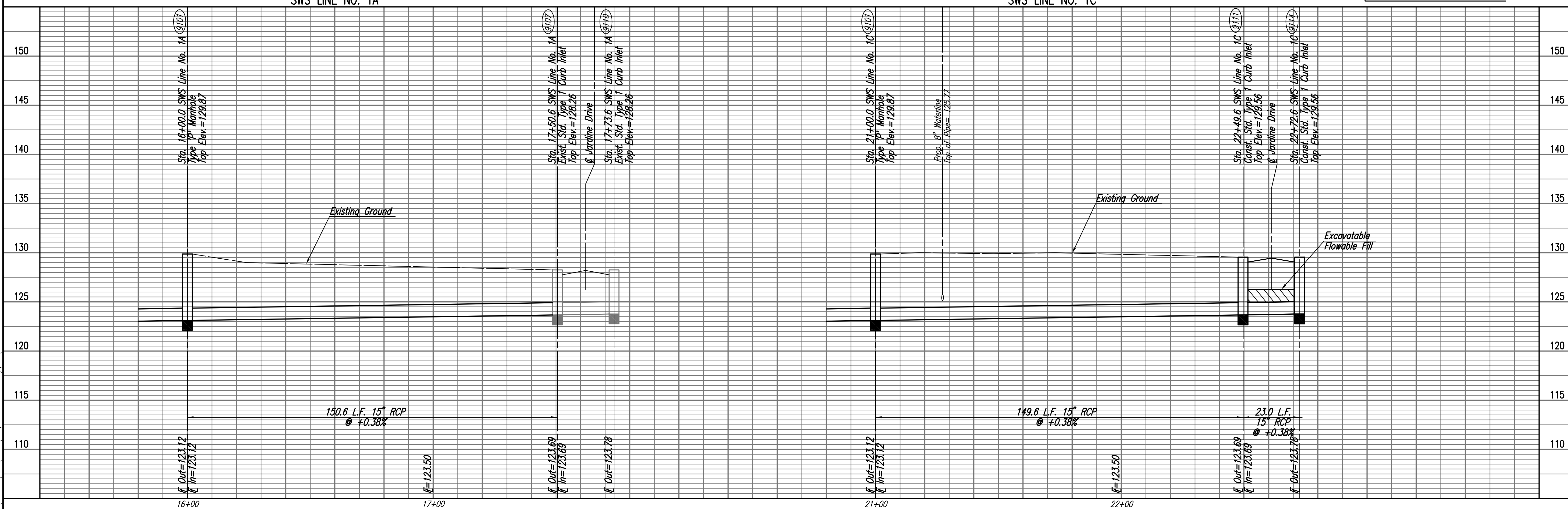
PROFILE	CHECKED	CHECKED
BY		
DATE		

Saved: 02-21-2007 10:49:36 AM by: BUS  
 Plot Scale: 1:20 02-21-2007 4:27:33 PM by: REJ  
 J:\SENTOU\2005\05416\004\2007-02-21 to City DWG\12-SWS LINE NO. 1A AND 1C



COORDINATE LIST		
POINT	NORTH	EAST
9101	6,464.9023	4,423.0459
9107	6,451.4018	4,273.0613
9108	6,449.9023	4,273.0613
9109	6,429.9023	4,273.0613
9110	6,428.4028	4,273.0613
9111	6,451.4018	4,572.0639
9112	6,449.9023	4,572.0639
9113	6,429.9023	4,572.0639
9114	6,428.4028	4,572.0639

9101 = COORDINATE POINT NO.  
 SEE SHEET NO. 3 FOR PLAT COORDINATES



21ST STREET KIDS AND FAMILY EMPOWERMENT  
 JARDINE DRIVE - PHASE 2  
 SWS LINE NO. 1A  
 STA. 16+00.0 TO STA. 17+50.6  
 SWS LINE NO. 1C  
 STA. 21+00.0 TO STA. 22+72.6  
 JAMES L. ARMOUR, P.E. - CITY ENGINEER  
 CITY OF WICHITA PROJECT NO. 472-94282

Professional Engineering Consultants, P.A.  
 303 S. TOPEKA AVENUE, SUITE 200, WICHITA, KANSAS 67202  
 316-262-2491 • FAX 316-262-3063

Designed By: BDB, BMM  
 Drawn By: BUS, FAT  
 Job No.: 35-05416-004  
 Date: October 2005