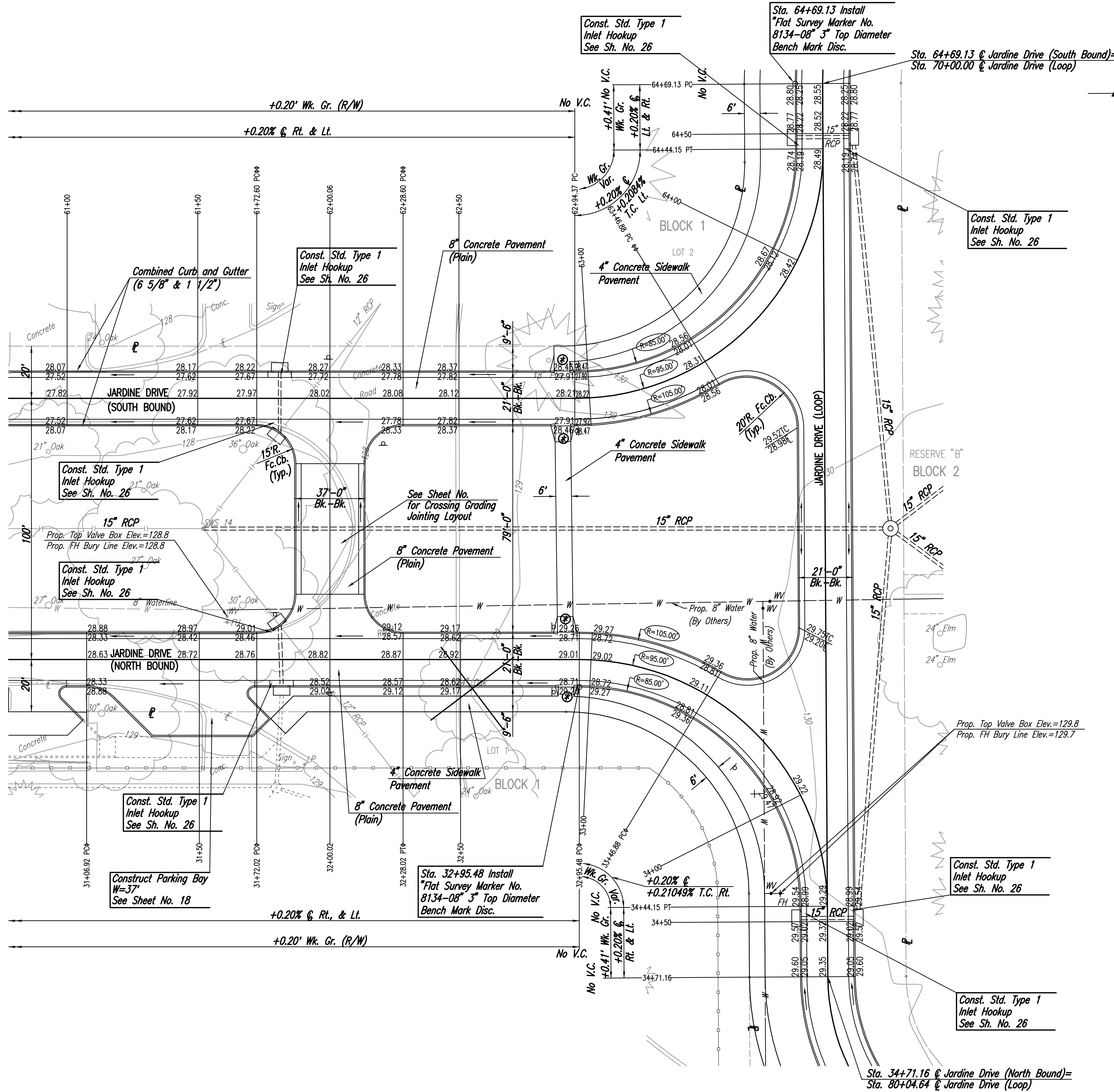


Sowed 12-20-2005 4:56:14 PM by BLS  
 Plot Scale 1:20 12-21-2005 7:35:04 AM by GSG  
 J:\SENTOU\2005\05416\2005-12-20 to City\Planing and Drain\DWG\08-PAVING PLAN-STR31-36



WATER VALVE BOX ELEVATIONS

STREET	STATION	OFFSET	PROPOSED ELEVATION
JARDINE DRIVE (NORTH BOUND)	31+60.71	16.50' LT.	128.8
JARDINE DRIVE (NORTH BOUND)	34+37.66	21.33' RT.	129.8

SCALE: 1"=20'  
 NORTH ARROW

Q CURVE DATA

$\Delta=90^{\circ}20'00''$   $D=60^{\circ}18'40.9''$   $R=95.00'$   $L=149.78'$   $T=95.55'$   $E=39.74'$

CURVE DATA BASED ON Q radius  $\Delta/2=45^{\circ}9'60''$

Q STATION	Q ARC LENGTH	FACE CURB LENGTH		CHORD LENGTH		DEFLECTION ANGLE	Q TOTAL DEFLECTION
		LEFT CURB	RIGHT CURB	8' OFF LEFT FACE CURB	8' OFF RIGHT FACE CURB		
62+94.37						0°00'00.0"	0°00'00.0"
63+00.00	5.63'	5.04'	6.22'	4.56'	6.70'	01°41'52.0"	01°41'52.0"
63+25.00	25.00'	22.37'	27.63'	20.20'	29.65'	07°32'20.1"	08°14'12.1"
63+46.88	21.88'	19.58'	24.18'	17.70'	25.97'	06°35'53.0"	15°50'05.1"
63+50.00	3.12'	2.79'	3.45'	2.53'	3.71'	00°56'27.1"	16°46'32.2"
63+75.00	25.00'	22.37'	27.63'	20.20'	29.65'	07°32'20.1"	24°18'52.3"
64+00.00	25.00'	22.37'	27.63'	20.20'	29.65'	07°32'20.1"	31°51'12.5"
64+25.00	25.00'	22.37'	27.63'	20.20'	29.65'	07°32'20.1"	39°23'32.6"
64+44.15	19.15'	17.13'	21.16'	15.49'	22.74'	05°46'29.3"	45°10'1.1"
TOTAL	149.78'	134.01'	165.54'				

Defl./ft. = 18.093404 min.

Q CURVE DATA

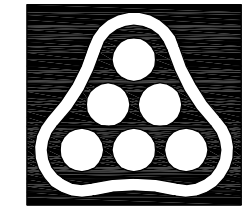
$\Delta=89^{\circ}40'00''$   $D=60^{\circ}18'40.9''$   $R=95.00'$   $L=148.67'$   $T=94.45'$   $E=38.96'$

CURVE DATA BASED ON Q radius  $\Delta/2=44^{\circ}50'00''$

Q STATION	Q ARC LENGTH	FACE CURB LENGTH		CHORD LENGTH		DEFLECTION ANGLE	Q TOTAL DEFLECTION
		LEFT CURB	RIGHT CURB	8' OFF LEFT FACE CURB	8' OFF RIGHT FACE CURB		
32+95.48						0°00'00.0"	0°00'00.0"
33+00.00	4.52'	5.00'	4.04'	5.38'	3.66'	01°21'46.9"	01°21'46.9"
33+25.00	25.00'	27.63'	22.37'	29.65'	20.20'	07°32'20.1"	08°54'07.1"
33+46.88	21.88'	19.58'	24.18'	17.70'	25.97'	06°35'53.0"	15°30'1.1"
33+50.00	3.12'	3.45'	2.79'	3.71'	2.53'	00°56'27.1"	16°26'27.2"
33+75.00	25.00'	22.37'	27.63'	29.65'	20.20'	07°32'20.1"	23°58'47.3"
34+00.00	25.00'	22.37'	27.63'	29.65'	20.20'	07°32'20.1"	31°31'07.5"
34+25.00	25.00'	22.37'	27.63'	29.65'	20.20'	07°32'20.1"	39°03'27.6"
34+44.15	19.15'	21.17'	17.14'	22.74'	15.50'	05°46'29.3"	44°50'1.1"
TOTAL	148.67'	164.32'	133.02'				

Defl./ft. = 18.093404 min.

- o RIGHT STA. NORTHBOUND
- o LEFT STA. SOUTHBOUND
- o Construct Std. Wheelchair Ramp See Sheet No. 14 for Jointing Layout See Sheet No. 34 for Signing Plan



21ST STREET KIDS AND FAMILY EMPOWERMENT  
**JARDINE DRIVE**  
 STA. 31+06.92 TO STA. 34+71.16 (NORTH BOUND)  
 STA. 61+00 TO STA. 64+69.13 (SOUTH BOUND)  
 JAMES L. ARMOUR, P.E.—CITY ENGINEER  
 CITY OF WICHITA PROJECT NO. 472-84282  
**Professional Engineering Consultants, P.A.**  
 303 S. TOPEKA • WICHITA, KANSAS 67202  
 316-262-2691 • FAX 316-262-3003

Designed by	BLB, BDB	Job No.	35-05416-000
Drawn by	SAW	Date	OCTOBER 2005

SHEET 8 OF 53