

Sta. 10+00.0, SWS Line No. 1=
 Sta. 25+00.0, SWS Line No. 1D=
 Sta. 26+00.0, SWS Line No. 1E=
 @ Jardine Dr. (North Bound)
 Sta. 31+51.62, 50.15' Lt.
 Remove Existing Manhole
 Const. Std. Type "P" Manhole
 Dia.=5'-0"
 Top Elev.=128.90
 Install 263.1 L.F. 15" RCP (N)
 See Sheet No. 28.

Sta. 15+16.7 SWS Line No. 1=
 @ Jardine Dr. (Loop) Sta. 73+50.0, 11.50' Rt.
 Const. Std. Type I Curb Inlet
 L=6'-4", W=4'-4"
 Top Elev.=130.06
 Install 23.0 L.F. 15" RCP (N)
 See Sheet No. 26.

Sta. 12+63.1 SWS Line No. 1=
 Sta. 16+00.0 SWS Line No. 1A=
 Sta. 18+00.0 SWS Line No. 1B=
 Sta. 21+00.0 SWS Line No. 1C=
 @ Jardine Dr. (Loop)
 Sta. 81+76.18, 25.00' Rt.
 Const. Std. Type "P" Manhole
 Dia.=6'-0"
 Top Elev.=129.87
 Install 118.1 L.F. 15" RCP (NW)
 Install 150.6 L.F. 15" RCP (SW)
 Install 95.0 L.F. 15" RCP (NE)
 Install 149.6 L.F. 15" RCP (SE)
 See Sheet No. 28.

Sta. 15+39.7 SWS Line No. 1=
 @ Jardine Dr. (Loop) Sta. 73+50.0, 11.50' Lt.
 Const. Std. Type I Curb Inlet
 L=6'-4", W=4'-4"
 Top Elev.=130.06
 See Sheet No. 26.

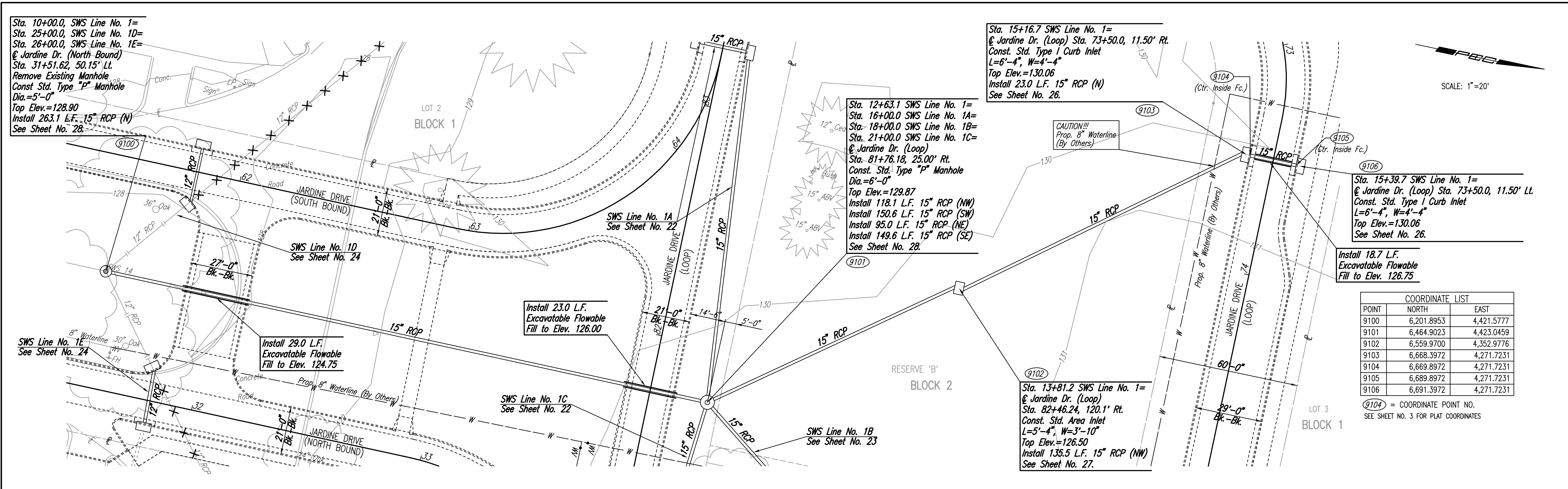
Install 18.7 L.F.
 Excavatatable Flowable
 Fill to Elev. 126.75

COORDINATE LIST		
POINT	NORTH	EAST
9100	6,201.8953	4,421.5777
9101	6,464.9023	4,423.0459
9102	6,559.9700	4,352.9776
9103	6,668.3972	4,271.7231
9104	6,669.8972	4,271.7231
9105	6,689.8972	4,271.7231
9106	6,691.3972	4,271.7231

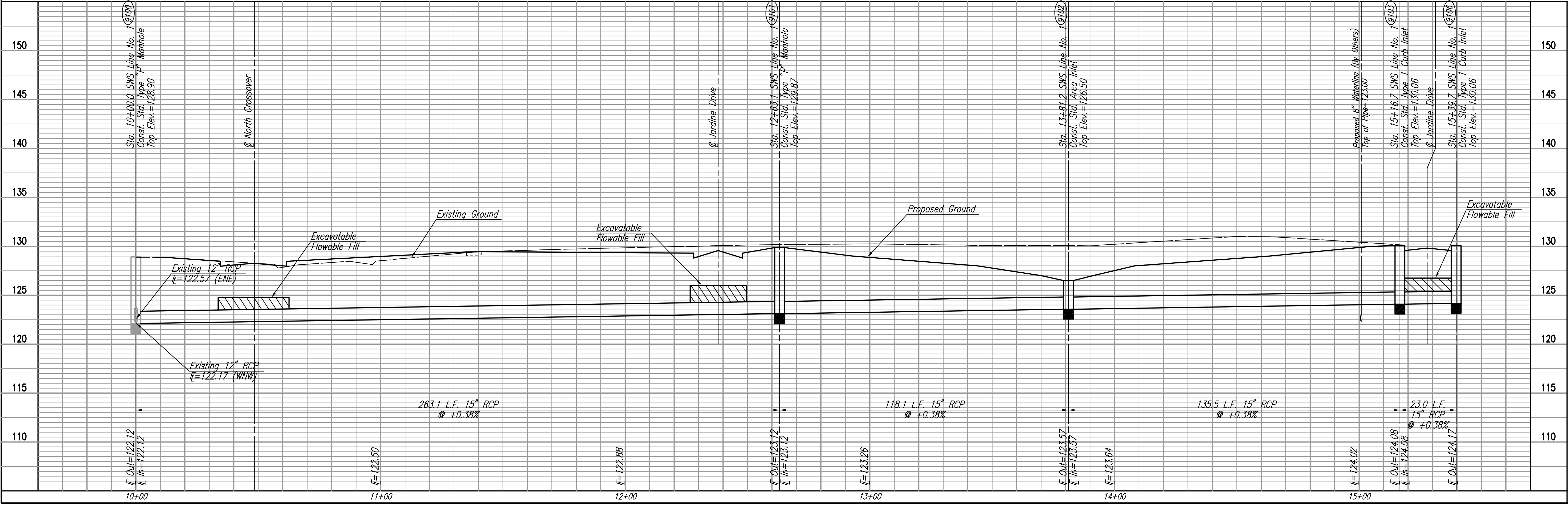
9104 = COORDINATE POINT NO.
 SEE SHEET NO. 3 FOR PLAT COORDINATES

PLAN	CHECKED	CHECKED
PROFILE	CHECKED	CHECKED

DATE	BY



SWS LINE NO. 1



Sowed 12-20-2005 4:59:48 PM by BJS
 Plot Scale 1:20 12-21-2005 8:10:42 AM by GSG
 J:\SENTOU\2005\05416\2005-12-20 to City\Planing and Drain\DWG\21-SWS LINE NO. 1

21ST STREET KIDS AND FAMILY EMPOWERMENT

SWS LINE NO. 1
 STA. 10+00.0 TO STA. 15+39.7

JAMES L. ARMOUR, P.E.-CITY ENGINEER
 CITY OF WICHITA PROJECT NO. 472-84282

Professional Engineering Consultants, P.A.
 303 S. TOPEKA, WICHITA, KANSAS 67202
 316-262-2291 • FAX 316-262-3003

Designed by BDB, BLB
 Drawn by SAW

Job No. 35-05416-000
 Date October 2005

Sheet 21 of 53