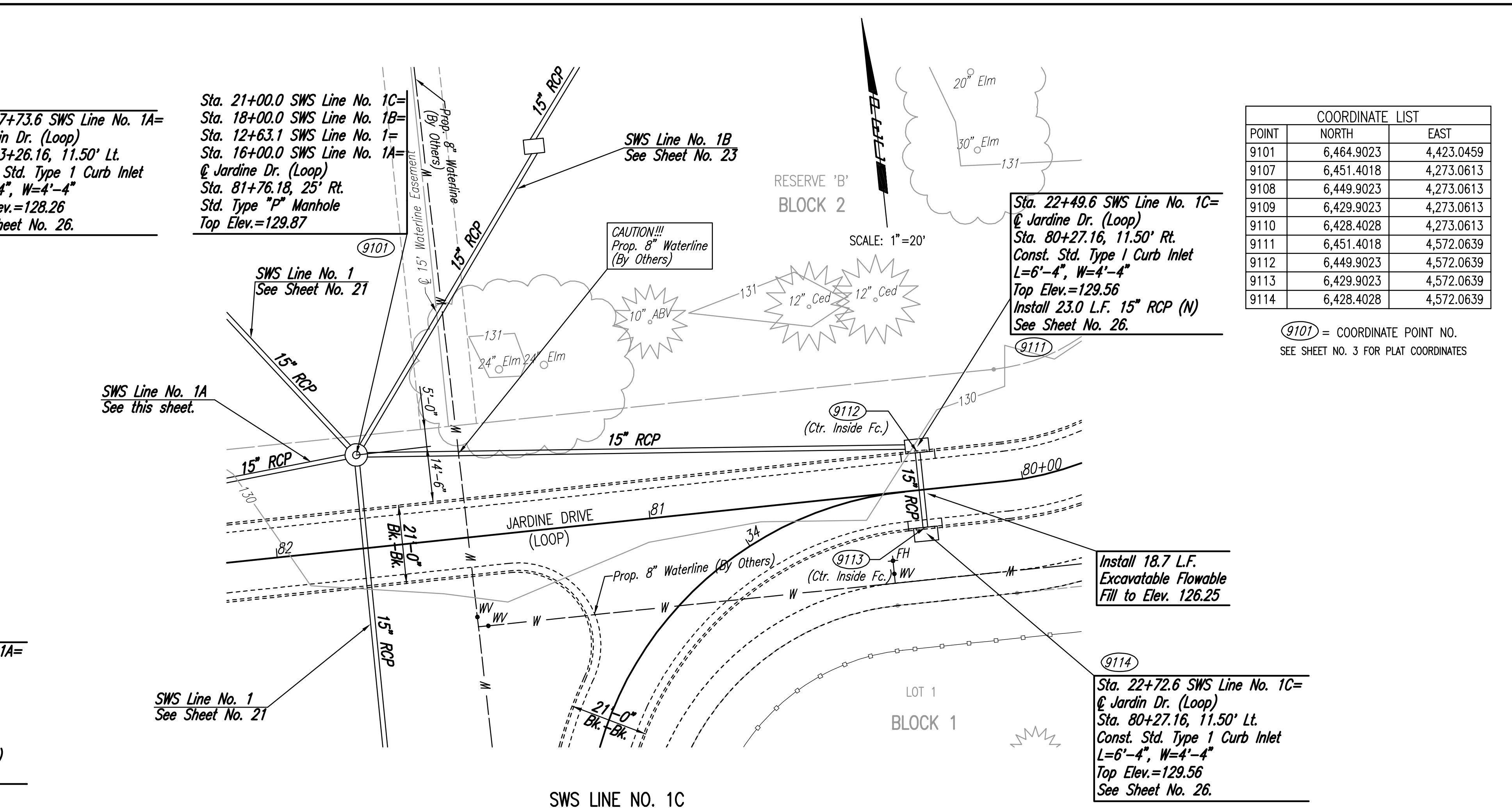
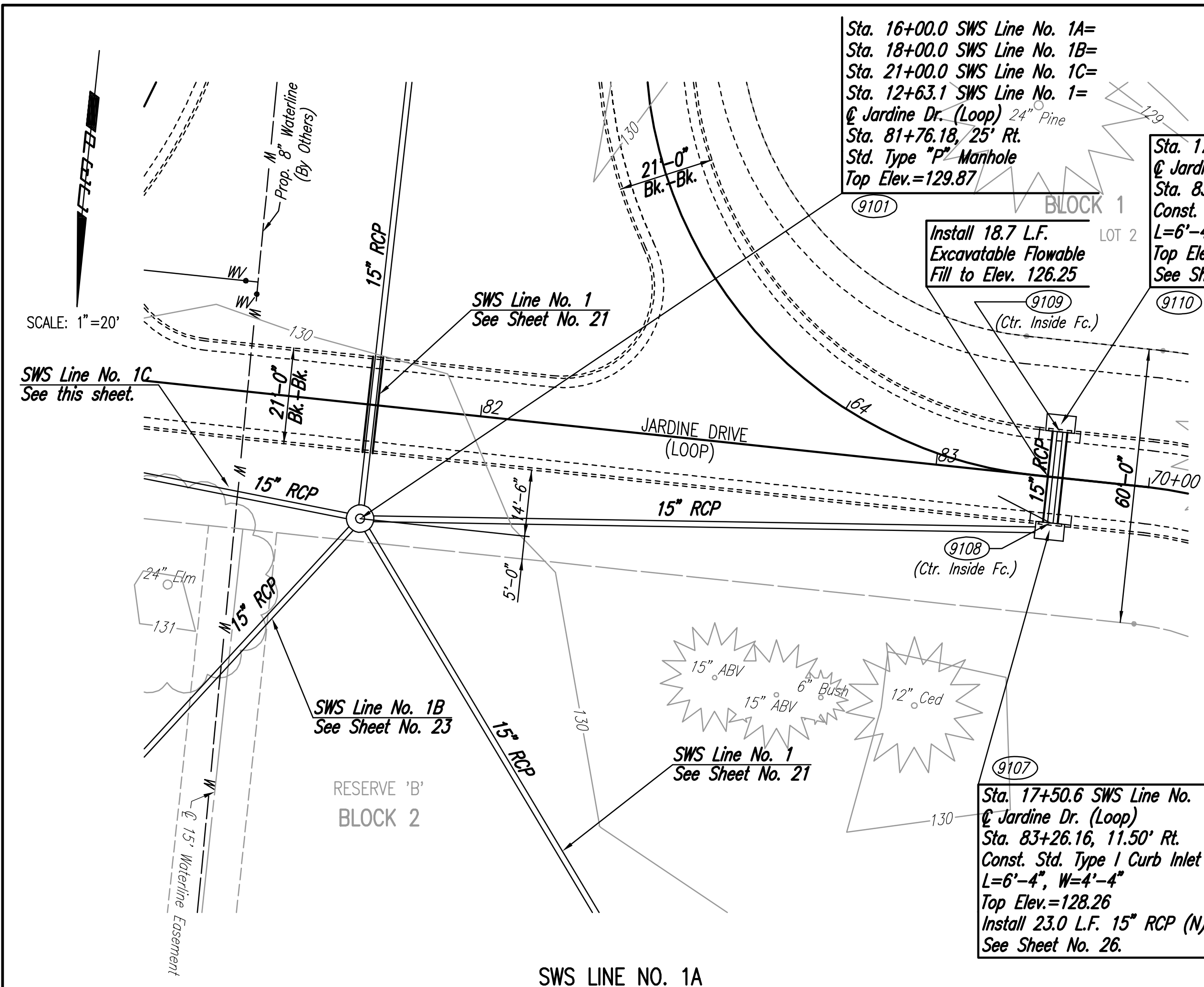


PLAN	CHECKED	CHECKED
BY		
DATE		

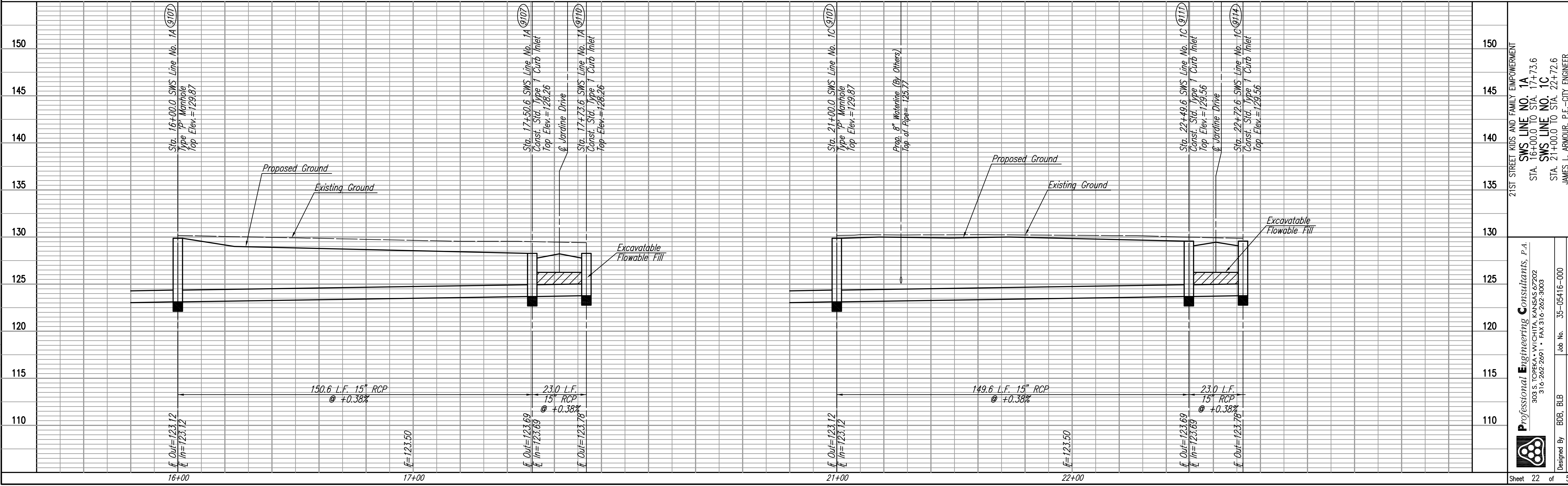
PROFILE	CHECKED	CHECKED
BY		
DATE		

Sowed 12-20-2005 5:00:32 PM by B.S.
 Plot Scale 1:20 12-21-2005 8:11:25 AM by GSG
 J:\SENTOU\2005\05416\2005-12-20 to City\Paving and Drain\DWG\22-SWS LINE NO. 1A-1C



COORDINATE LIST		
POINT	NORTH	EAST
9101	6,464.9023	4,423.0459
9107	6,451.4018	4,273.0613
9108	6,449.9023	4,273.0613
9109	6,429.9023	4,273.0613
9110	6,428.4028	4,273.0613
9111	6,451.4018	4,572.0639
9112	6,449.9023	4,572.0639
9113	6,429.9023	4,572.0639
9114	6,428.4028	4,572.0639

(9101) = COORDINATE POINT NO.
 SEE SHEET NO. 3 FOR PLAT COORDINATES



21ST STREET KIDS AND FAMILY EMPOWERMENT
SWS LINE NO. 1A
 STA. 16+00.0 TO STA. 17+73.6
SWS LINE NO. 1C
 STA. 21+00.0 TO STA. 22+72.6
 JAMES L. ARMOUR, P.E. - CITY ENGINEER
 CITY OF WICHITA PROJECT NO. 472-84282

Professional Engineering Consultants, P.A.
 303 S. TOPEKA, WICHITA, KANSAS 67202
 316-262-2291 • FAX 316-262-3003

Designed By: BDB, BLB
 Job No.: 35-05416-000
 Date: October 2005
 Drawn By: SAW

Sheet 22 of 53