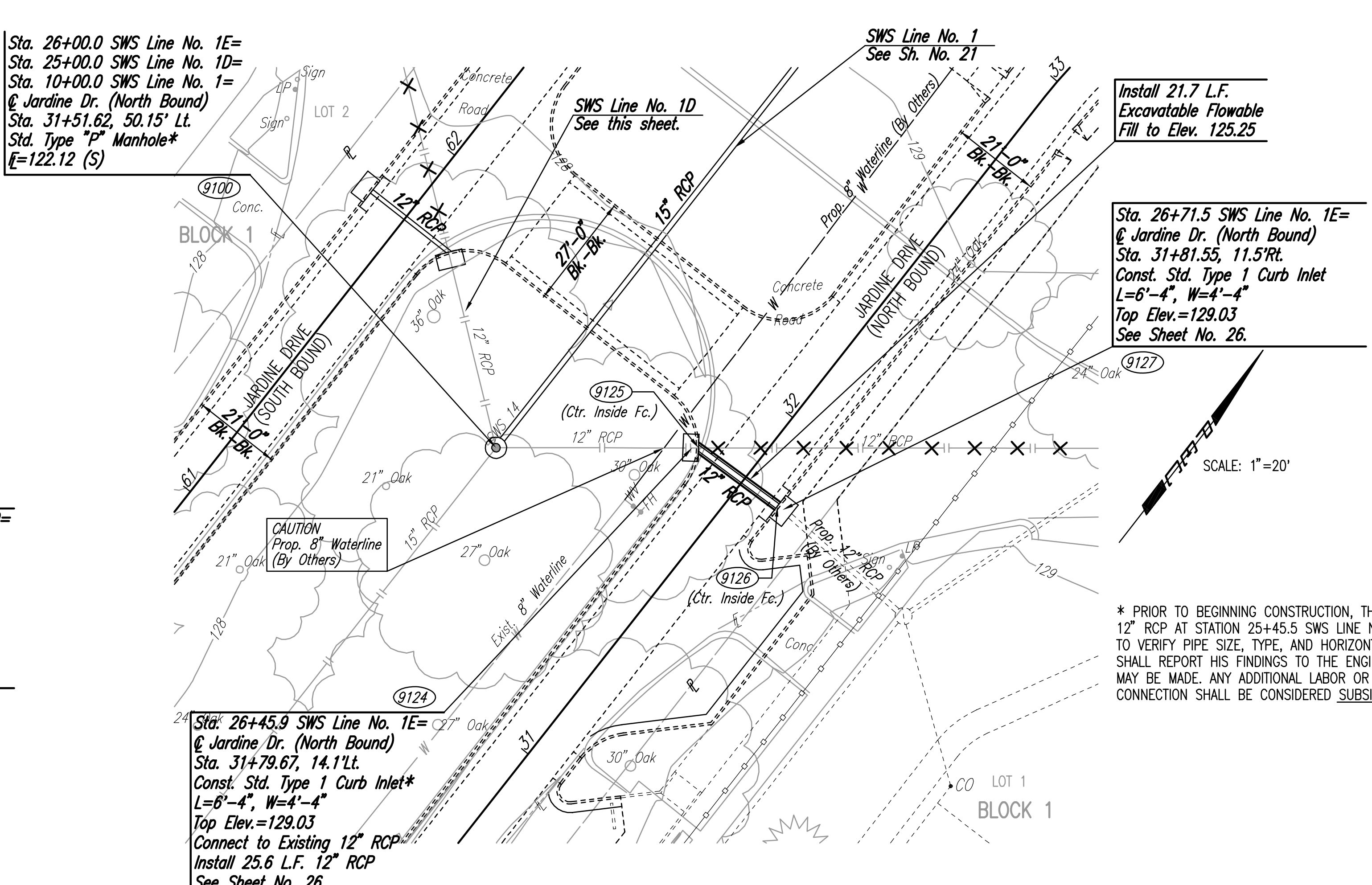
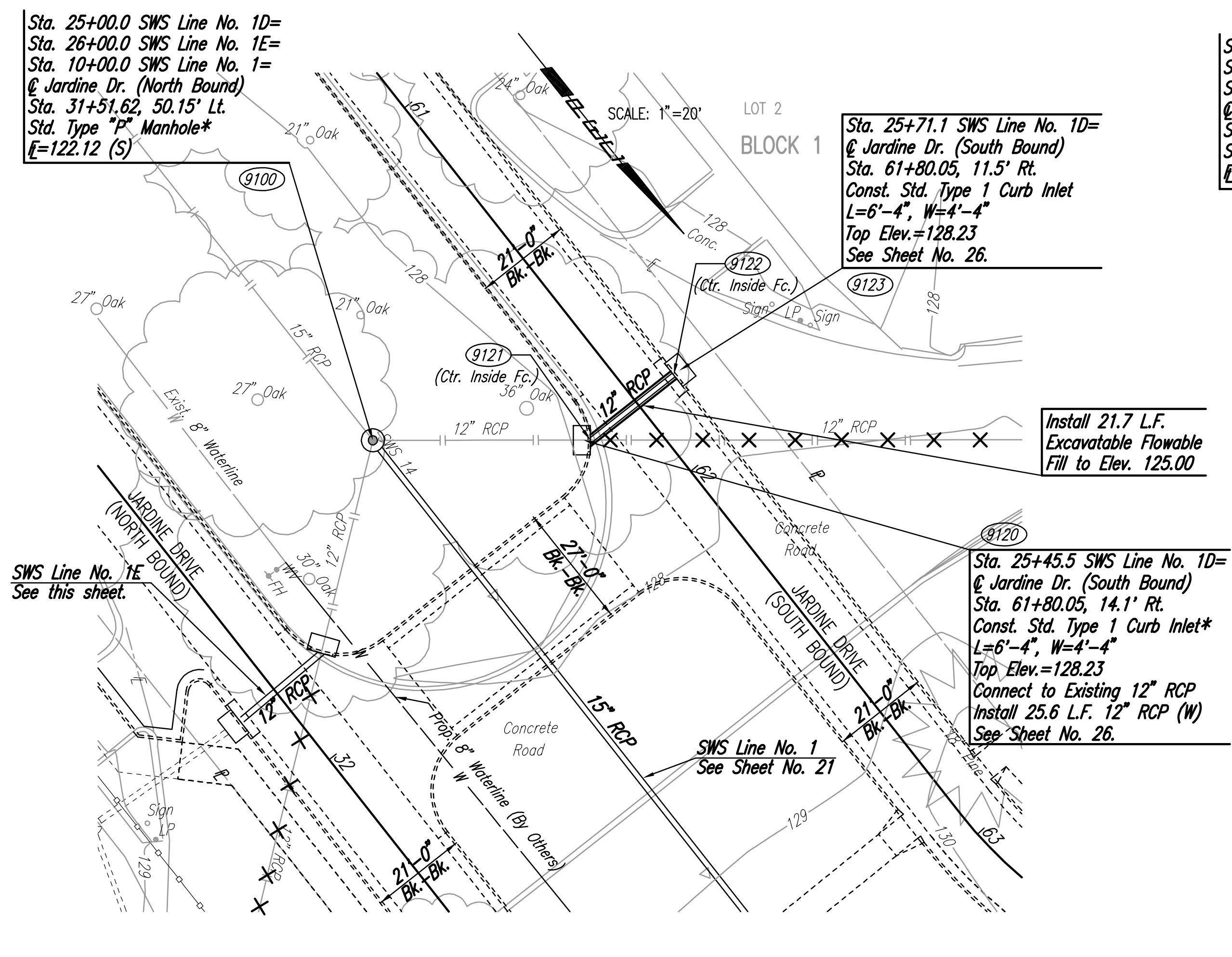


PLAN	CHECKED	CHECKED
BY		
DATE		

PROFILE	CHECKED	CHECKED
BY		
DATE		

Sowed 12-20-2005 5:02:30 PM by BJS  
 Plot Scale 1:20 12-21-2005 8:12:44 AM by GSG  
 J:\SENTOU\2005\05416\2005-12-20 to City\Planing and Drain\DWG\24-SWS LINE NO. 1D-1E



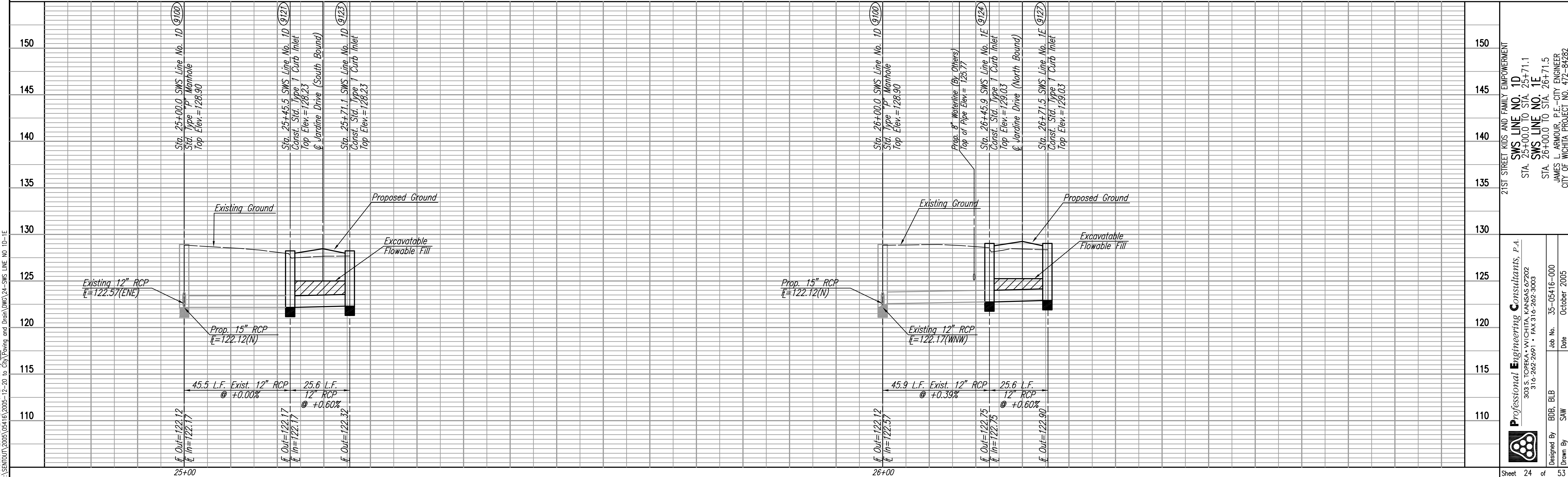
COORDINATE LIST		
POINT	NORTH	EAST
9100	6,201.8953	4,421.5777
9120	6,230.2614	4,385.9562
9121	6,231.1955	4,384.7832
9122	6,231.4181	4,361.9004
9123	6,231.4268	4,360.4009
9124	6,230.0211	4,457.8077
9125	6,230.8967	4,459.0250
9126	6,231.4680	4,481.9027
9127	6,231.4593	4,482.4022

9100 = COORDINATE POINT NO.  
 SEE SHEET NO. 3 FOR PLAT COORDINATES

\* PRIOR TO BEGINNING CONSTRUCTION, THE CONTRACTOR SHALL EXCAVATE THE EXISTING 12" RCP AT STATION 25+45.5 SWS LINE NO. 1D AND STATION 26+45.9 SWS LINE NO. 1E TO VERIFY PIPE SIZE, TYPE, AND HORIZONTAL AND VERTICAL LOCATION. THE CONTRACTOR SHALL REPORT HIS FINDINGS TO THE ENGINEER SO THAT ANY NECESSARY PLAN MODIFICATIONS MAY BE MADE. ANY ADDITIONAL LABOR OR MATERIALS NECESSARY TO COMPLETE THE CONNECTION SHALL BE CONSIDERED SUBSIDIARY TO THE PROJECT.

SWS LINE NO. 1D

SWS LINE NO. 1E



21ST STREET KIDS AND FAMILY EMPowerMENT  
 SWS LINE NO. 1D  
 STA. 25+00.0 TO STA. 25+71.1  
 SWS LINE NO. 1E  
 STA. 26+00.0 TO STA. 26+71.5  
 JAMES L. ARMOUR, P.E. - CITY ENGINEER  
 CITY OF WICHITA PROJECT NO. 472-84282

Professional Engineering Consultants, P.A.  
 303 S. TORRENS, WICHITA, KANSAS 67202  
 316-262-2291 - FAX 316-262-3003  
 Job No. 35-05416-000  
 Date October 2005  
 Designed By BDB, BLB  
 Drawn By SAW  
 Sheet 24 of 53