

GENERAL NOTES

- UNLESS SHOWN OR STATED OTHERWISE ON THESE DRAWINGS, MATERIALS AND CONSTRUCTION SHALL BE IN ACCORDANCE WITH CITY OF WICHITA CONCRETE PAVEMENT AND ASPHALTIC CONCRETE PAVEMENT SPECIFICATIONS.
- CONTRACTOR WILL BE REQUIRED TO PROVIDE A MINIMUM ADVANCE NOTICE OF SEVENTY-TWO (72) HOURS TO UTILITY COMPANIES PRIOR TO STARTING ANY EXCAVATION AS FOLLOWS:
KANSAS ONE-CALL
1-800-344-7233
OR 687-2470 (LOCAL WICHITA)
THE CONTRACTOR MUST NOTIFY THE FOLLOWING IN CASE OF AN EMERGENCY:
SBC (TELEPHONE) 800-870-8390
COX COMMUNICATIONS (CABLE) 262-0661
WESTAR (ELECTRIC) 383-8600
KANSAS GAS SERVICE (GAS) 832-3101
CITY OF WICHITA WATER & SEWER MAINT. 262-6000
AQUILA (GAS) 800-303-0357
- THE CONTRACTOR SHALL BE RESPONSIBLE FOR PRESERVING PROPERTY IRONS. THE CONTRACTOR WILL BE REQUIRED TO RE-ESTABLISH ANY PROPERTY IRONS WHICH ARE DAMAGED OR DESTROYED BY HIS CONSTRUCTION OPERATIONS. SUCH IRONS SHALL BE RE-ESTABLISHED BY A LICENSED LAND SURVEYOR IN ACCORDANCE WITH STATE LAWS.
- EXISTING UTILITIES AND THEIR LOCATIONS, AS SHOWN ON THE PLANS REPRESENT THE BEST INFORMATION OBTAINABLE FOR DESIGN. LOCATION INFORMATION HAS BEEN OBTAINED FROM THE VARIOUS UTILITY COMPANIES AND IS EITHER FROM COMPANY RECORD DRAWINGS OR COMPANY PROVIDED FIELD LOCATIONS. THE PLAN LOCATIONS SHOWN ARE NOT GUARANTEED. ADDITIONAL EXISTING UTILITIES MAY ALSO BE ENCOUNTERED.
- RUBBLE FROM THE REMOVAL OF MISCELLANEOUS STRUCTURES AND EXCESS EXCAVATION WHICH IS TO BE WASTED SHALL BE DISPOSED OF ON SITES TO BE PROVIDED BY THE CONTRACTOR. THESE SITES SHALL BE APPROVED BY THE ENGINEER AS TO SUITABILITY, APPEARANCE AND SITE LOCATION. LOCATIONS THAT, IN THE OPINION OF THE ENGINEER, WILL LEAVE AN UNSIGHTLY APPEARANCE WILL NOT BE APPROVED. ALL DISPOSAL SITES MUST BE APPROVED BY THE KANSAS DEPARTMENT OF HEALTH AND ENVIRONMENT. MATERIAL EITHER STOCKPILED OR DISPOSED OF IN A FLOOD PLAIN WOULD REQUIRE A KANSAS STATE BOARD OF AGRICULTURE PERMIT. ANY MATERIAL DUMPED IN WATERS OF THE UNITED STATES OR WETLANDS IS SUBJECT TO U.S. CORPS OF ENGINEERS PERMITTING REGULATIONS. ANY MATERIAL BURIED OR STOCKPILED BEYOND APPROVED CONSTRUCTION LIMITS WOULD REQUIRE ADDITIONAL ARCHAEOLOGICAL INVESTIGATIONS UNLESS BURIED IN A PREVIOUSLY APPROVED BORROW LOCATION.
- THIS PROJECT INCLUDES A CERTAIN AMOUNT OF ROLL TYPE CURB CONSTRUCTION. ROLL CURBS SHALL BE DEPRESSED THROUGH ALL DRIVEWAY OPENINGS WHEN SUCH DRIVES ARE CONSTRUCTED AS A PART OF THE PROJECT. NO MORE THAN 2 DRIVES 20 FEET IN WIDTH OR EQUIVALENT COMBINATIONS THEREOF ARE TO BE CONSTRUCTED WITH THIS PROJECT.
- A SAW CUT OF AT LEAST ONE-HALF THE DEPTH OF THE EXISTING SURFACE COURSES OR ONE-FOURTH THE DEPTH OF THE EXISTING TOTAL PAVEMENT THICKNESS SHALL BE PROVIDED AT LOCATIONS WHERE PROPOSED CONSTRUCTION ABUTS AN EXISTING SURFACE OR PAVEMENT FOR WHICH PARTIAL REMOVAL OF THAT SURFACE OR PAVEMENT IS REQUIRED. SAW JOINT TO FACILITATE REMOVAL WITHIN THREE (3) FEET OF EXISTING JOINTS WILL NOT BE PERMITTED AND FOR SUCH INSTANCES THE LIMITS OF REMOVAL SHALL EXTEND TO THE EXISTING JOINT. SUCH SAW CUTS WILL NOT BE PAID FOR DIRECTLY AND THIS COST SHALL BE CONSIDERED AS SUBSIDIARY TO THE REMOVAL OF SURFACE OR PAVEMENT.
- CONTRACTOR SHALL ADJUST VALVE BOXES ALONG PROJECT TO MATCH FINISH GRADE. COST SHALL BE SUBSIDIARY TO PROJECT.
- CONTRACTOR SHALL RESEED AND MULCH ALL DISTURBED AREAS. SEE SHEET 1B FOR DETAILS.
- CONTRACTOR SHALL EXPECT PONDS ON SITE TO BE FULL AND SHALL BE PREPARED TO DEAL WITH WATER DURING THE CONSTRUCTION OF PROPOSED STORM SEWER.
- REFER TO NOTES ON SHEET 17 FOR SPECIAL GRADING INSTRUCTIONS.

PROJECT LENGTH	
WESTLAKES PARKWAY.....	2,048 L.F.
EARTHWORK QUANTITIES	
EXCAVATION	1,050 C.Y.
LOOSE FILL	1,170 C.Y.
*COMPACTED FILL	4,130 C.Y.
**BORROW MATERIAL	5,080 C.Y.

*20% SHRINK/SWELL FACTOR ADDED
 **BORROW MATERIAL TO BE TAKEN FROM AN ON-SITE LOCATION (SEE SHEET 17 FOR DETAILS)
 NOTE: EARTHWORK QUANTITIES ABOVE INCLUDE BERM GRADING. SEE SHEET 17 FOR BERM GRADING QUANTITIES.

PAVING CONTRACTOR WILL BE RESPONSIBLE TO OPERATE ALL WATER VALVES ON THE PROJECT, IN THE PRESENCE OF THE INSPECTOR, TO ENSURE ACCESSIBILITY TO THE VALVES, AND THAT ALL VALVES ARE LEFT IN THE "ON" POSITION WHEN THE PROJECT IS COMPLETED.

PAVING AND INCIDENTAL DRAINAGE IN
FOX RIDGE ADDITION

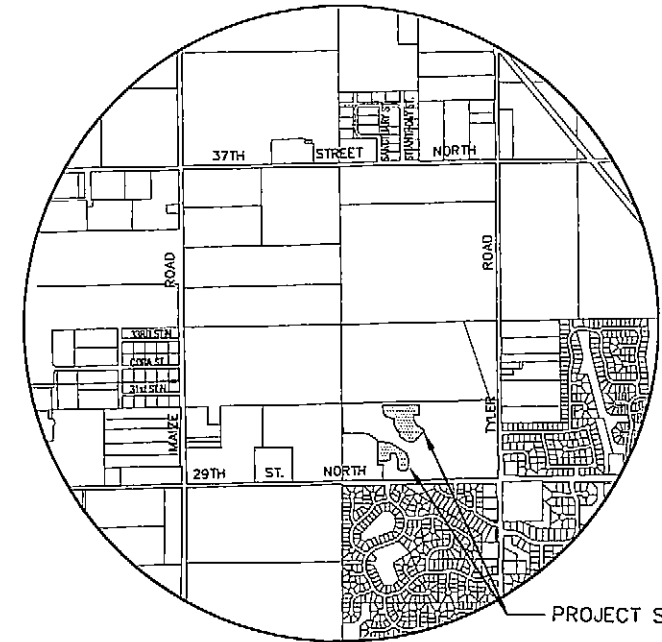
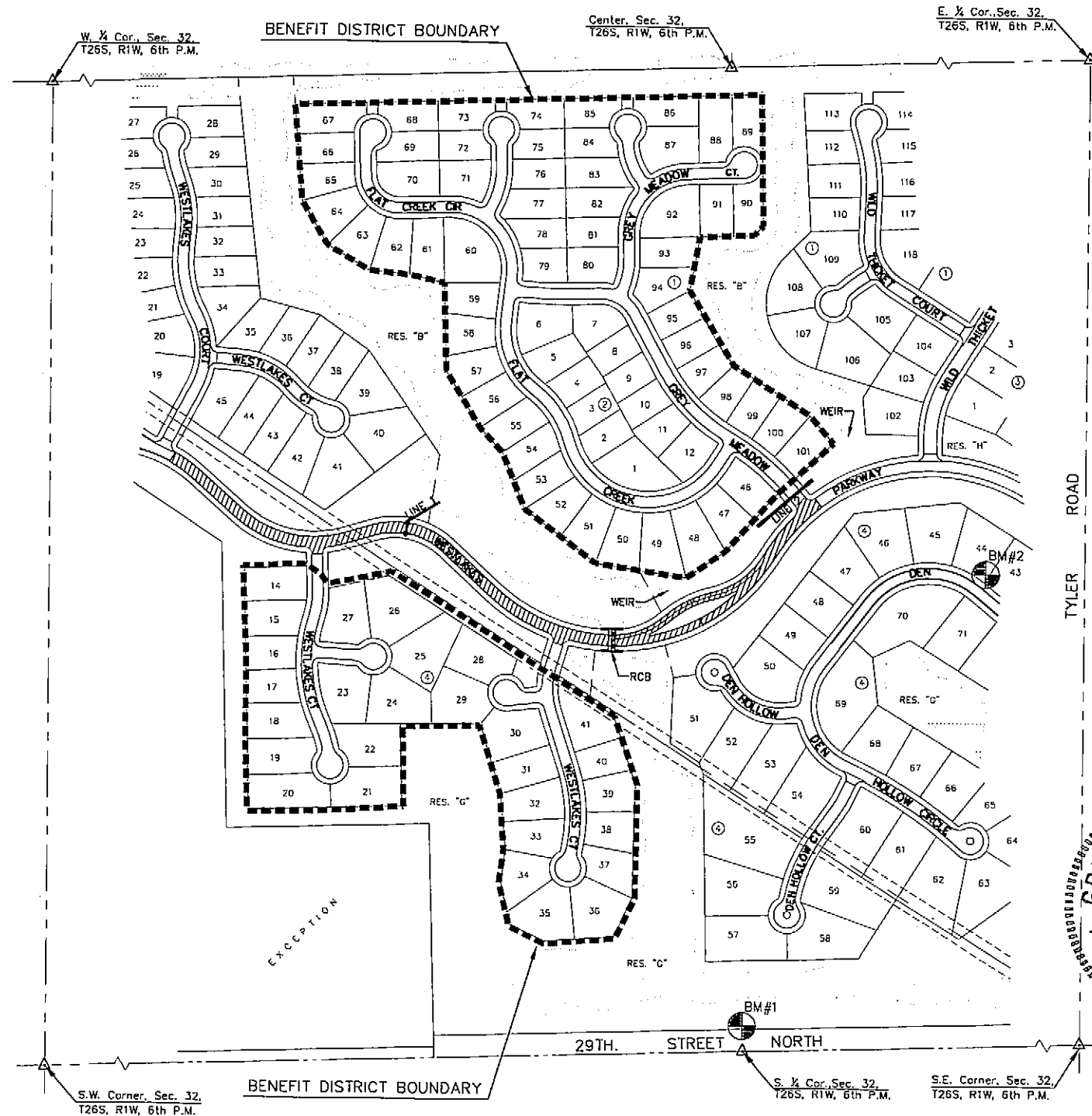
CONNECTOR PHASE - PART 2

AN ADDITION TO THE CITY OF WICHITA
 SEDGWICK COUNTY, KANSAS

PROJECT NO. 472-84279

JAMES L. ARMOUR, P.E. - CITY ENGINEER

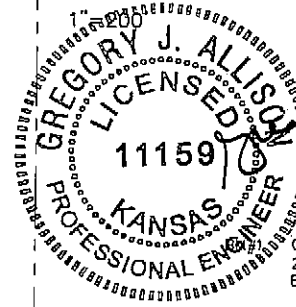
OCA 765996



VICINITY MAP

INDEX TO DRAWINGS

SHEET NO.	DESCRIPTION
1	TITLE SHEET
2-3	TYPICAL SECTIONS
4-6	PAVING DETAILS
7-10	PAVING PLANS
11	SWS DETAILS
12	LINE 1 & WEIR
13	LINE 2 & WEIR
14	RCB PLAN
15-16	RCB DETAILS
17	BERM GRADING
18	EROSION CONTROL
19-23	BMP DETAILS
24-29	CROSS SECTIONS
30	BUBBLE MAP
31	FINAL PLAT



all
 9/13/06

BENCHMARKS

BM#1
 C.O.W. disc 0.5 miles east of Maize Rd. on 29th St. No. ± 25' north of 29th St. Cl. Elev.=160.86
 BM#2
 C.O.W. disc north side of Den Hollow @ P.C. between Lots 44 & 43, Blk. 4 Elev.=166.40

MKEC
 ENGINEERING
 CONSULTANTS, INC.
 411 N. WEBB ROAD
 WICHITA, KS. 67206
 316-684-9600

PROJECT TYPE
FOX RIDGE ADDITION
 CONNECTOR PHASE - PART 2

TITLE SHEET
 SHEET TITLE
 472-84279
 PROJECT NUMBER

DFL, DMU, GJA
 DESIGNED DRAWN CHECKED

ISSUED
 September 2006