

PAVING & INCIDENTAL DRAINAGE PLANS
FOX RIDGE ADDITION
PHASE 12

BUBBLE MAP

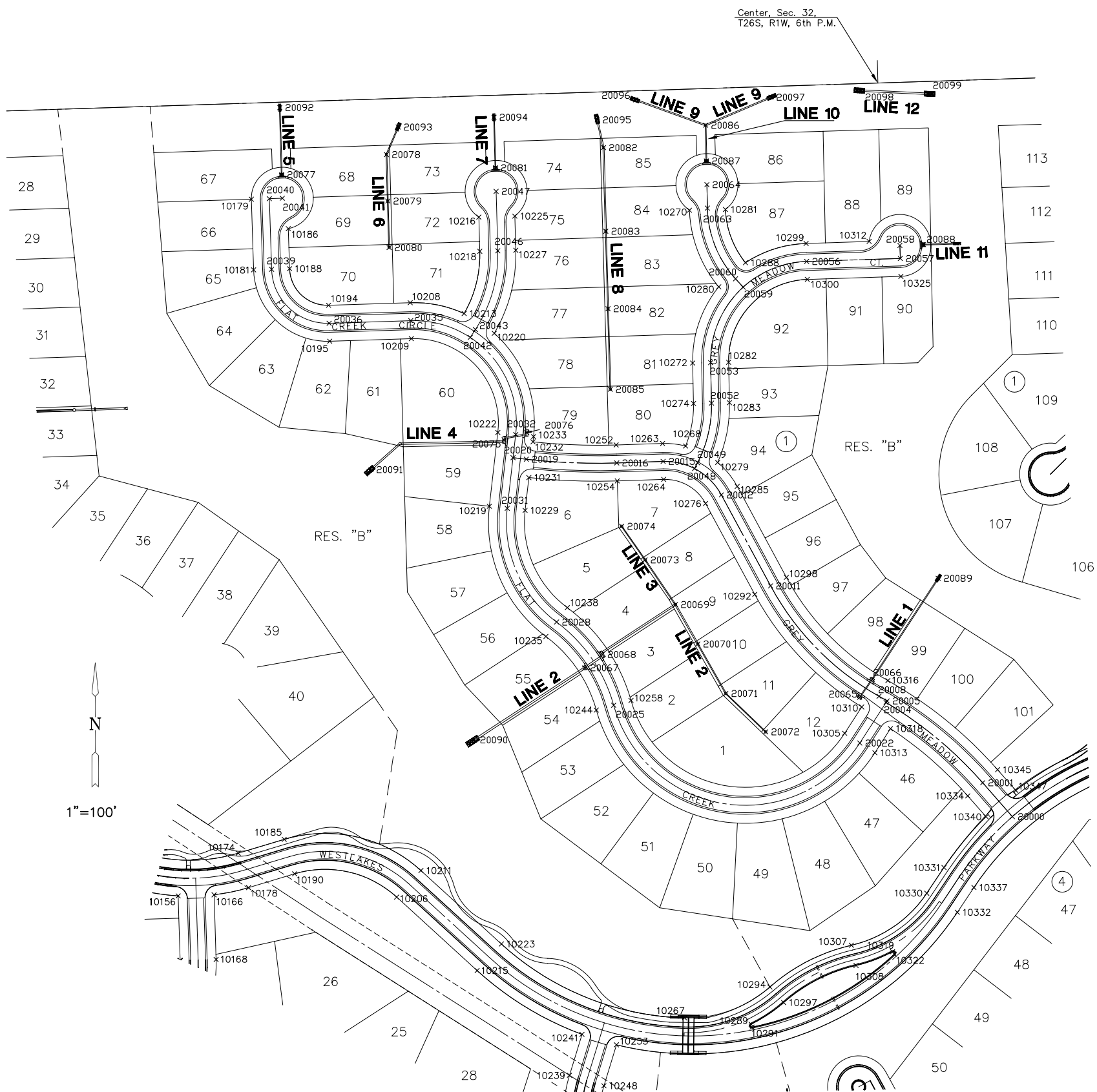
SHEET TITLE
472-84279
PROJECT NUMBER

DESIGN BY **DFL**
DRAWN BY **KKL**
CHECKED BY **GJA**

ISSUED
SEPTEMBER 2006

REVISED

SHEET NO.
42 of 43



SWS Points			
Point No.	Northing	Easting	Description
20065	1705736.462	1615029.359	Inlet
20066	1705765.375	1615049.739	Inlet
20067	1705784.052	1614586.494	Inlet
20068	1705805.549	1614614.477	Inlet
20069	1705886.060	1614732.491	Mh
20070	1705822.434	1614768.530	Mh
20071	1705742.548	1614823.779	Mh
20072	1705680.702	1614878.005	Mh
20073	1705958.102	1614683.648	Mh
20074	1706012.312	1614645.873	Mh
20075	1706151.737	1614456.259	Inlet
20076	1706163.431	1614492.904	Inlet
20077	1706579.544	1614097.711	Inlet
20078	1706611.845	1614266.674	Mh
20079	1706536.901	1614268.791	Mh
20080	1706481.904	1614270.910	Mh
20081	1706590.592	1614442.343	Inlet
20082	1706623.064	1614616.495	Mh
20083	1706488.168	1614620.305	Mh
20084	1706363.218	1614623.834	Mh
20085	1706233.217	1614627.506	Mh
20086	1706659.247	1614781.239	Mh
20087	1706601.551	1614782.448	Inlet
20088	1706466.525	1615132.507	Inlet
20089	1705928.425	1615156.153	Es
20090	1705667.801	1614408.887	Es
20091	1706103.767	1614241.616	Es
20092	1706687.661	1614094.657	Es
20093	1706656.295	1614285.572	Es
20094	1706672.059	1614440.042	Es
20095	1706667.871	1614606.398	Es
20096	1706700.023	1614668.379	Es
20097	1706704.436	1614886.553	Es
20098	1706715.169	1615031.753	Es
20099	1706709.934	1615139.626	Es

Road Points			
Point No.	Northing	Easting	Description
20000	1705544.030	1615275.681	PI
20001	1705598.596	1615227.824	PC
20004	1705728.117	1615072.036	PT
20005	1705730.638	1615073.667	PC
20008	1705738.132	1615060.730	PRC
20011	1705916.187	1614885.889	PT
20012	1706062.899	1614806.627	PC
20015	1706116.888	1614712.705	PT
20016	1706114.487	1614637.849	PC
20019	1706120.481	1614492.174	PT
20020	1706122.943	1614470.736	PI
20022	1705662.689	1615029.677	PC
20025	1705723.613	1614832.931	PRC
20028	1705857.821	1614540.901	PRC
20031	1706041.265	1614461.359	PT
20032	1706160.235	1614475.018	PC
20035	1706343.970	1614305.795	PT
20036	1706339.754	1614174.289	PC
20039	1706428.624	1614081.451	PT
20040	1706540.765	1614077.798	PI
20041	1706541.438	1614098.788	PI
20042	1706316.939	1614401.720	PI
20043	1706329.627	1614410.059	PC
20046	1706456.673	1614446.126	PT
20047	1706552.487	1614443.420	PI
20048	1706105.384	1614763.409	PI
20049	1706114.701	1614768.239	PC
20052	1706210.937	1614790.635	PT
20053	1706276.202	1614789.267	PC
20056	1706439.472	1614944.103	PT
20057	1706444.313	1615095.045	PI
20058	1706465.302	1615094.371	PI
20059	1706398.012	1614841.678	PI
20060	1706411.488	1614829.442	PC
20063	1706525.458	1614784.043	PT
20064	1706563.381	1614783.248	PI

Plat Points			
Point No.	Northing	Easting	Description
10179	1706539.836	1614048.813	PI
10181	1706425.895	1614052.466	PI
10186	1706492.364	1614108.365	PI
10188	1706427.753	1614110.436	PI
10190	1705451.755	1614118.560	PI
10194	1706368.739	1614173.360	PI
10195	1706310.769	1614175.218	PI
10206	1705414.218	1614283.096	PI
10208	1706372.955	1614304.878	PI
10209	1706314.985	1614306.737	PI
10211	1705457.034	1614322.220	PI
10213	1706355.428	1614391.894	PI
10215	1705295.703	1614412.795	PI
10216	1706510.953	1614415.581	PI
10218	1706455.854	1614417.138	PI
10219	1706044.573	1614432.548	PI
10220	1706323.608	1614440.479	PI
10222	1706163.543	1614446.207	PI
10223	1705338.520	1614451.919	PI
10225	1706512.591	1614473.558	PI
10227	1706457.491	1614475.114	PI
10229	1706037.957	1614490.169	PI
10231	1706090.851	1614496.242	PI
10232	1706148.474	1614502.858	PI
10233	1706156.927	1614503.828	PI
10235	1705834.529	1614523.624	PI
10238	1705881.113	1614558.178	PI
10239	1705126.779	1614561.729	PI
10241	1705192.814	1614581.896	PI
10244	1705715.889	1614604.978	PI
10248	1705109.838	1614617.200	PI
10252	1706143.472	1614636.920	PI
10253	1705175.874	1614637.367	PI
10254	1706085.502	1614638.779	PI
10258	1705731.336	1614660.883	PI
10263	1706145.873	1614711.775	PI
10264	1706087.903	1614713.634	PI
10267	1705219.314	1614747.236	PI
10268	1706141.787	1614748.860	PI
10270	1706522.035	1614755.128	PI
10272	1706275.594	1614760.273	PI
10274	1706210.329	1614761.641	PI
10276	1706049.115	1614781.112	PI
10279	1706115.262	1614800.611	PI
10280	1706398.473	1614802.333	PI
10281	1706523.283	1614813.121	PI
10282	1706276.809	1614818.261	PI
10283	1706211.545	1614819.628	PI
10285	1706076.684	1614832.141	PI
10288	1706437.458	1614845.369	PI
10289	1705209.162	1614854.550	PI
10291	1705204.464	1614856.144	PI
10292	1705902.403	1614860.375	PI
10294	1705269.196	1614884.860	PI
10297	1705244.064	1614907.009	PI
10298	1705929.972	1614911.404	PI
10299	1706468.457	1614943.174	PI
10300	1706410.487	1614945.033	PI
10305	1705678.426	1615005.331	PI
10307	1705336.531	1615016.127	PI
10308	1705303.880	1615023.618	PI
10310	1705720.885	1615032.812	PI
10312	1706471.716	1615044.785	PI
10313	1705646.912	1615054.023	PI
10316	1705763.391	1615074.977	PI
10318	1705685.876	1615079.241	PI
10319	1705326.120	1615082.556	PI
10322	1705322.085	1615085.442	PI
10325	1706415.328	1615095.974	PI
10330	1705420.396	1615137.726	PI
10331	1705461.905	1615165.445	PI
10332	1705389.698	1615186.969	PI
10334	1705577.496	1615203.766	PI
10337	1705429.695	1615213.679	PI
10340	1705544.005	1615233.140	PI
10345	1705619.688	1615251.889	PI
10347	1705586.205	1615281.256	PI