

Benchmarks

1. CoW B.M. (Disc) S.E. Cor Woodlawn @ Harry
Elev = 1327.60
2. "□" Cut W side Woodlawn, End Return of Alley N side
Elev = 1326.24

P.V.I.
No V.C.
Elev= 1330.24

SCALE: 1" = 10'



LINCOLN HILLS SECOND ADDITION

BLOCK 1

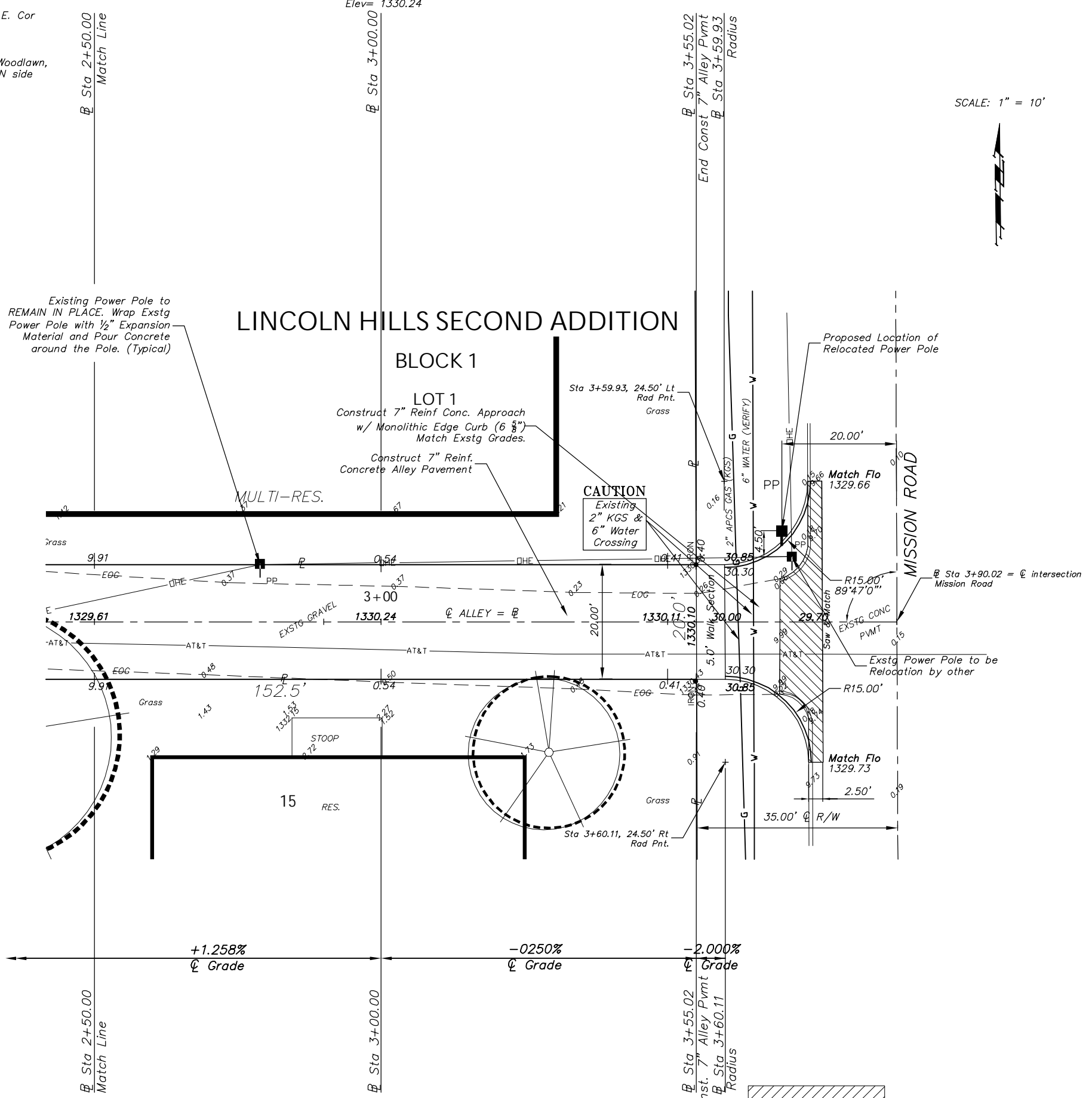
LOT 1

Construct 7" Reinf Conc. Approach w/ Monolithic Edge Curb (6 5/8")
Match Exstg Grades.
Construct 7" Reinf. Concrete Alley Pavement

CAUTION
Existing
2" KGS &
6" Water Crossing

Existing Power Pole to REMAIN IN PLACE. Wrap Exstg Power Pole with 1/2" Expansion Material and Pour Concrete around the Pole. (Typical)

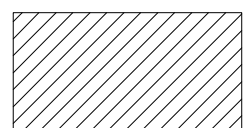
Proposed Location of Relocated Power Pole



+1.258%
℄ Grade

-0.250%
℄ Grade

-2.000%
℄ Grade



Denotes Complete Removal

Drawing File: E:\East West Alley Between Woodlawn & Mission\Land\dwg\base

Design: KK
Drawn: STAFF
Approved: JFB
Scale: 1:10

Project No. 0705EB24 CAPITAL IMPROVEMENT PROJECT
7" CONCRETE ALLEY PAVEMENT
Between Woodlawn and Mission S of Harry
NW 1/4 Sec 31 T27S R2E - Lincoln Hills Second Addition

Baughman Company, P.A.
315 Ellis St. Wichita, KS 67211 P 316-262-7271 F 316-262-0149
ENGINEERING | SURVEYING | PLANNING | LANDSCAPE ARCHITECTURE

AUGUST, 2007
SHEET
3
OF
7