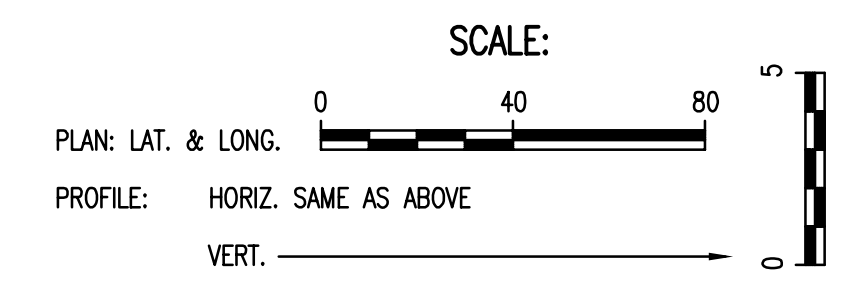
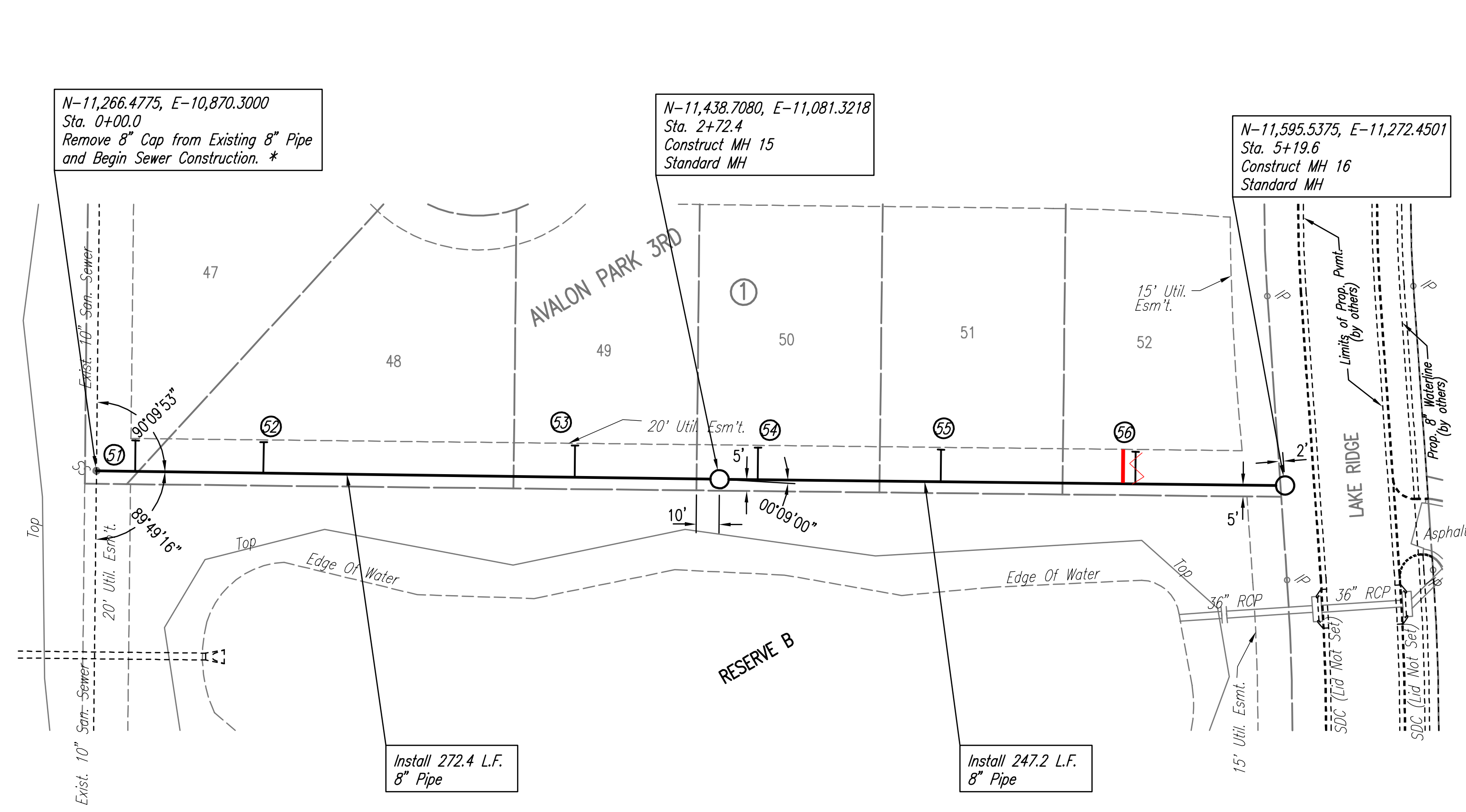


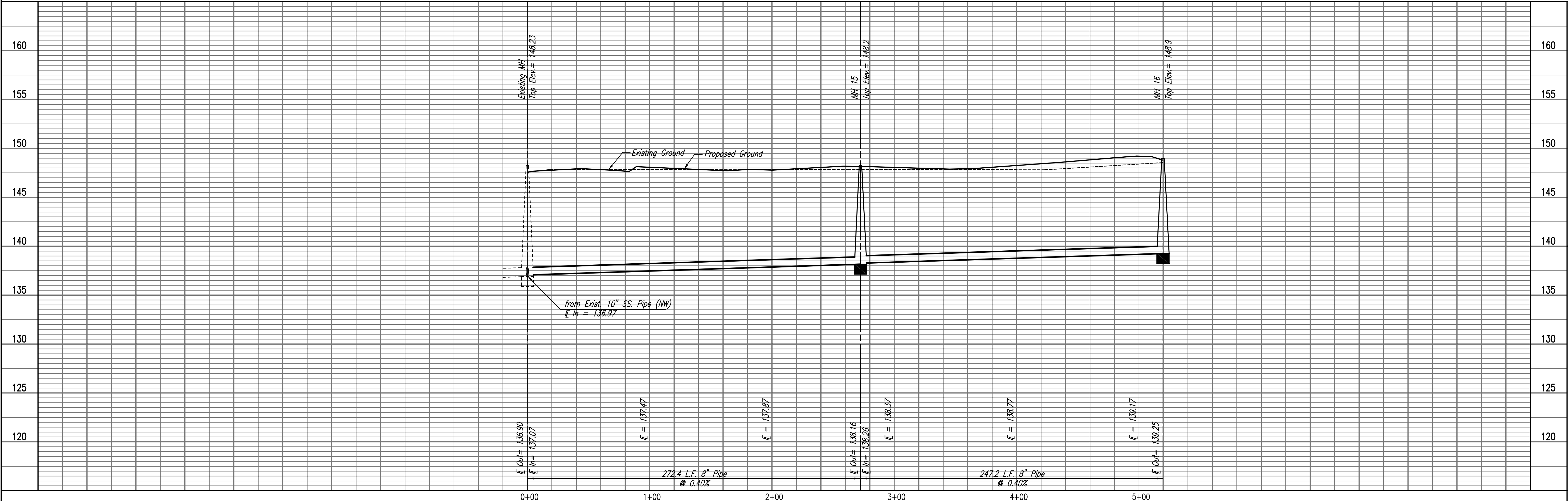
PLAN	CHECKED	BY	DATE
	CHECKED		

PROFILE	CHECKED	BY	DATE
	CHECKED		



\* PRIOR TO BEGINNING CONSTRUCTION, THE CONTRACTOR SHALL EXCAVATE THE EXISTING 8" PVC PIPE AT SANITARY SEWER STATION 0+00.0 TO VERIFY ITS HORIZONTAL AND VERTICAL LOCATION. THE PIPE LOCATION SHALL BE REPORTED TO THE ENGINEER SO THAT ANY NECESSARY PLAN MODIFICATIONS CAN BE MADE. ANY ADDITIONAL LABOR OR MATERIALS NECESSARY TO COMPLETE THE CONNECTION SHALL BE CONSIDERED SUBSIDIARY TO THE PROJECT.

SANITARY SEWER LINE NO. 5



Sewer 06-08-2007 3:22:22 PM by JAW  
 Plot Scale 1:40 06-11-2007 3:09:50 PM by BEJ  
 J:\SENTOU\2007\07150\2007-06-11 to City\Sanitary Sewer\DWG\12-Line05

LATERAL 26, MAIN 19  
 OF THE SOUTHWEST INTERCEPTOR SEWER  
**SANITARY SEWER LINE NO. 5**  
 JAMES L. ARMOUR, P.E. - CITY ENGINEER  
 CITY OF WICHITA PROJECT NO. 468-84216

Professional Engineering Consultants, P.A.  
 803 S. TOPICKA AVENUE, WICHITA, KANSAS 67202  
 316-262-2691 • FAX 316-262-3006  
 Job No. 35-07150-1-042  
 Date APRIL 2007  
 Designed By MDK  
 Drawn By JAN