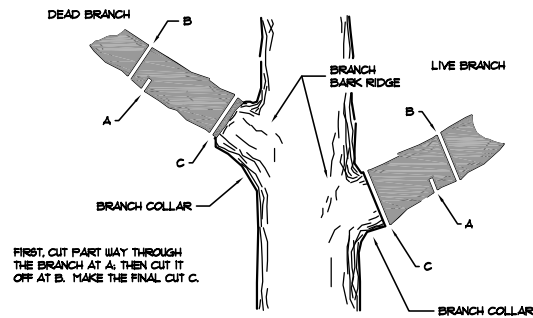
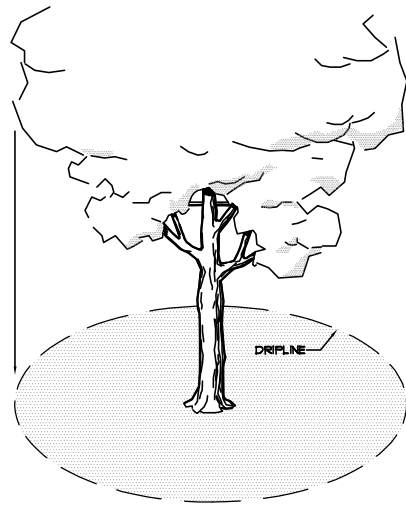


GENERAL TREE & NATURAL AREA PROTECTION NOTES:

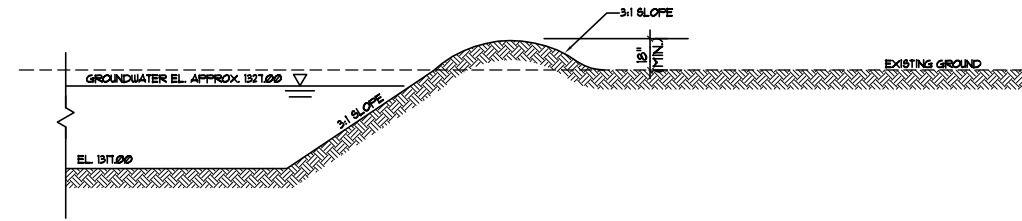
- TREES ARE AN IMPORTANT ASSET TO THE DEVELOPER. EVERY EFFORT SHOULD BE MADE TO PRESERVE EACH AND EVERY TREE (UNLESS NOTED FOR REMOVAL) AS DIRECTED IN THESE PLANS & NOTES.
- EQUIPMENT AND CONSTRUCTION MATERIALS SHALL REMAIN OUT OF AND AWAY FROM TREE DRIPLINES SO AS TO NOT COMPACT THE ROOT ZONE OR DAMAGE THE TREE. CHEMICAL SPILL DAMAGE SHALL BE PREVENTED BY FILLING GAS TANKS, CLEANING TOOLS & REPAIRING EQUIPMENT WELL OUTSIDE TREE DRIPLINE. MIXING TRUCKS SHALL BE RINSED OUT OFF SITE. WHERE IT OCCURS THAT A CONSTRUCTION ROUTE OR A PROPOSED IMPROVEMENT OCCURS WITHIN A TREE'S DRIPLINE, IT MAY BE NECESSARY, DEPENDENT UPON THE TYPE OF CONSTRUCTION AND EQUIPMENT USED, TO INSTALL A ROOT PROTECTION BRIDGE OR APPROVED EQUIVALENT. THIS MAY BE DETERMINED IN THE FIELD AT THE DIRECTION OF THE ENGINEER (SEE TREE DRIPLINE DETAIL ON THIS SHEET).
- ANY TREE THAT MUST HAVE BRANCHES REMOVED SHALL BE TRIMMED WITH SHARP INSTRUMENT/TOOL THAT IS INTENDED FOR SUCH OPERATIONS. KNOCKING BRANCHES OFF WITH A BACKHOE OR OTHER SIMILAR MACHINE IS NOT ACCEPTABLE! REFER TO TREE TRIMMING DETAIL ON THIS SHEET FOR TRIMMING PROCEDURE.



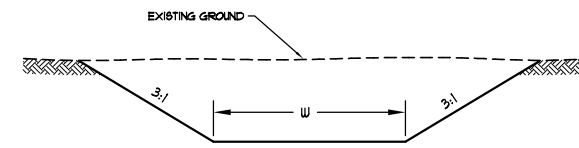
1 TREE TRIMMING DETAIL
SCALE: N.T.S.



3 TREE DRIPLINE DETAIL
SCALE: N.T.S.



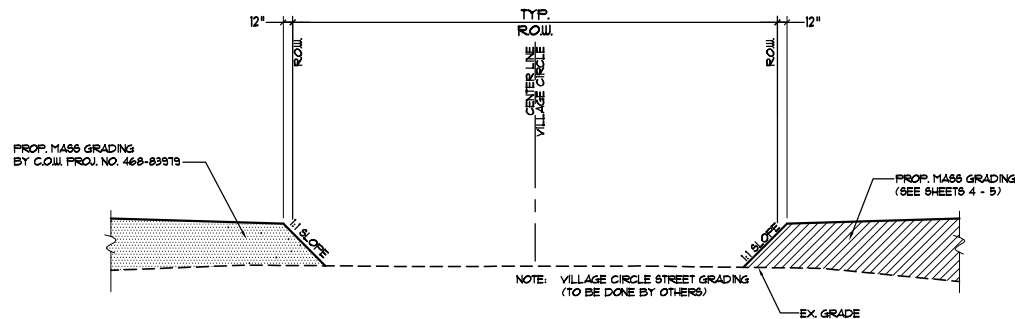
4 TYPICAL GROUND WATER PIT BANK DETAIL
SCALE: N.T.S.



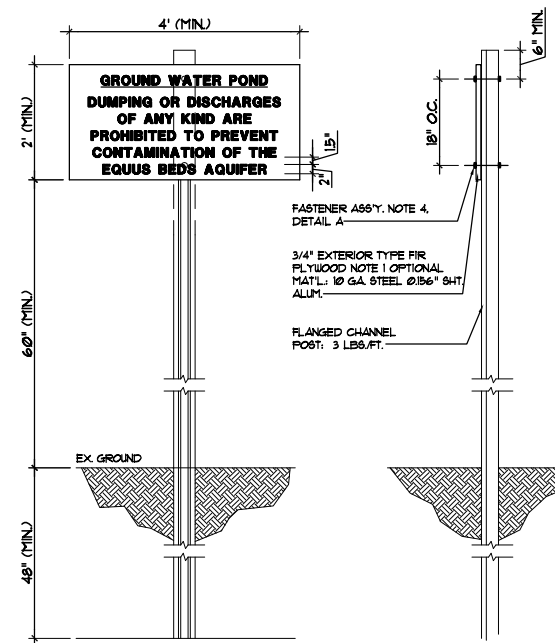
BOTTOM WIDTH	
STA. TO STA.	W
10+00 TO 18+50	4.0'
18+50 TO 23+41.03	VARIES*
23+41.03 TO 28+00	8.0'

*SEE CROSS SECTION

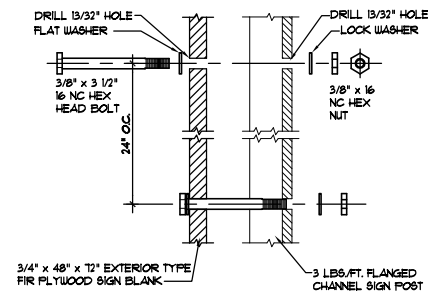
6 TRAPEZOIDAL SWALE SECTION DETAIL
SCALE: N.T.S.



2 STREET R.O.W. EDGE GRADING DETAIL
SCALE: N.T.S.



5 GROUND WATER PIT SIGN DETAIL
SCALE: N.T.S.



DETAIL 'A' - PLYWOOD/FLANGED CHANNEL POSTS

NOTES

- MATERIALS: THE SIGN SHALL BE MANUFACTURED FROM BACKING MATERIALS COMPOSED OF (1) METAL - 10 GA. STEEL OR 0.06" THICK FLAT SHEET ALUMINUM, (2) 3/4" EXTERIOR TYPE FIR PLYWOOD. THE SIGN POSTS SHALL BE FLANGED CHANNEL POSTS, 3 LBS. PER FOOT.
- COLOR: THE FRONT, BACK AND ALL EDGES OF THE SIGN SHALL BE PAINTED ONE COAT OF WHITE PRIMER TO BE FOLLOWED BY TWO COATS OF SEMI-GLOSS WHITE ENAMEL. ALL ENAMEL PRINTS SHALL BE OPAQUE AND OF EXTERIOR QUALITY. WHITE: SIGN BLANK, BLACK: LETTERING.
- LETTERING AND INTERLINE SPACING: ALL LETTERING SHALL BE SERIES "C" ALPHABET AS IS SPECIFIED IN THE STANDARD ALPHABETS FOR HIGHWAY SIGN PUBLICATION. INTERLINE SPACING SHALL BE AS SPECIFIED ON THE LAYOUT DETAIL. EACH LINE OF LETTERING SHALL BE CENTERED ON THE SIGN BLANK AS SHOWN ON LAYOUT DETAIL. LETTERING SHALL BE BLACK ENAMEL.
- HARDWARE: ALL BOLTS, NUTS, AND WASHERS SHALL BE ELECTROPLATED WITH ZINC OR CADMIUM. SEE DETAIL 'A'.
- THE CONTRACTOR SHALL SUPPLY ALL SIGN CONSTRUCTION MATERIALS AND SHALL BE RESPONSIBLE FOR ITS FABRICATION AND INSTALLATION.