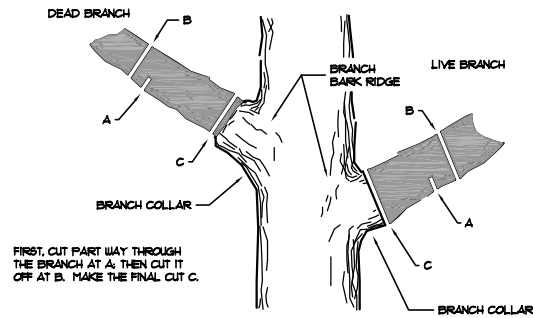
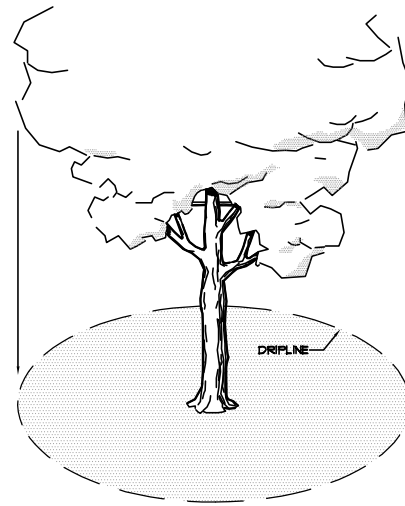


# GENERAL TREE & NATURAL AREA PROTECTION NOTES:

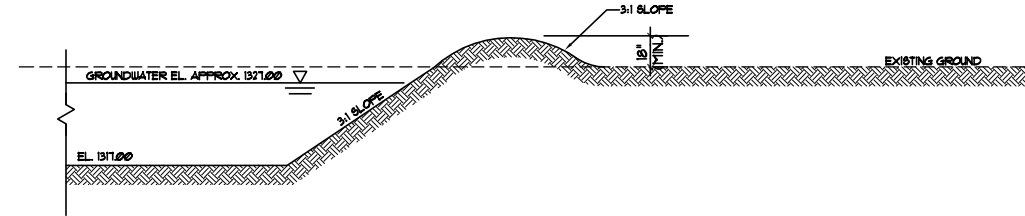
- TREES ARE AN IMPORTANT ASSET TO THE DEVELOPER. EVERY EFFORT SHOULD BE MADE TO PRESERVE EACH AND EVERY TREE (UNLESS NOTED FOR REMOVAL) AS DIRECTED IN THESE PLANS & NOTES.
- EQUIPMENT AND CONSTRUCTION MATERIALS SHALL REMAIN OUT OF AND AWAY FROM TREE DRIPLINES SO AS TO NOT COMPACT THE ROOT ZONE OR DAMAGE THE TREE. CHEMICAL SPILL DAMAGE SHALL BE PREVENTED BY FILLING GAS TANKS, CLEANING TOOLS & REPAIRING EQUIPMENT WELL OUTSIDE TREE DRIPLINE. MIXING TRUCKS SHALL BE RINSED OUT OFF SITE. WHERE IT OCCURS THAT A CONSTRUCTION ROUTE OR A PROPOSED IMPROVEMENT OCCURS WITHIN A TREE'S DRIPLINE, IT MAY BE NECESSARY, DEPENDENT UPON THE TYPE OF CONSTRUCTION AND EQUIPMENT USED, TO INSTALL A ROOT PROTECTION BRIDGE OR APPROVED EQUIVALENT. THIS MAY BE DETERMINED IN THE FIELD AT THE DIRECTION OF THE ENGINEER (SEE TREE DRIPLINE DETAIL ON THIS SHEET).
- ANY TREE THAT MUST HAVE BRANCHES REMOVED SHALL BE TRIMMED WITH SHARP INSTRUMENT/TOOL THAT IS INTENDED FOR SUCH OPERATIONS. KNOCKING BRANCHES OFF WITH A BACKHOE OR OTHER SIMILAR MACHINE IS NOT ACCEPTABLE! REFER TO TREE TRIMMING DETAIL ON THIS SHEET FOR TRIMMING PROCEDURE.



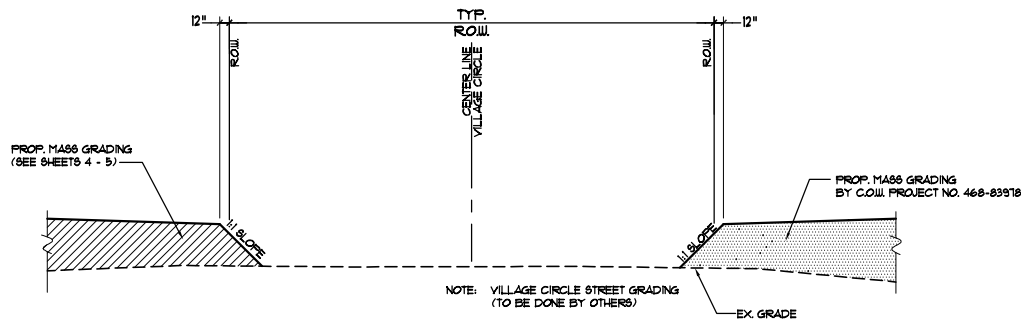
**1 TREE TRIMMING DETAIL**  
SCALE: N.T.S.



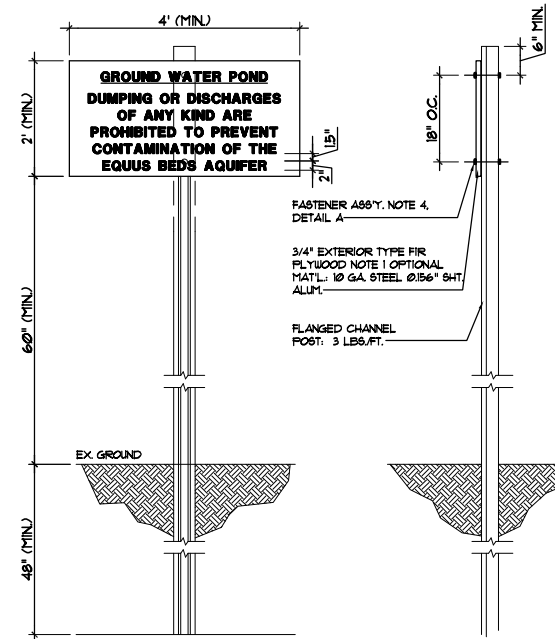
**3 TREE DRIPLINE DETAIL**  
SCALE: N.T.S.



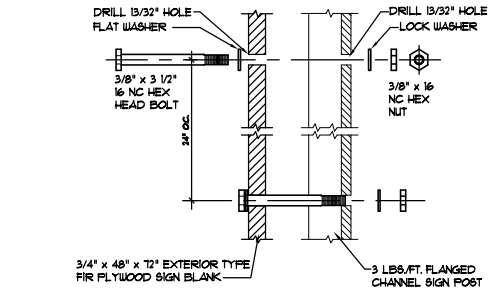
**4 TYPICAL GROUND WATER PIT BANK DETAIL**  
SCALE: N.T.S.



**2 STREET R.O.W. EDGE GRADING DETAIL**  
SCALE: N.T.S.



**5 GROUND WATER PIT SIGN DETAIL**  
SCALE: N.T.S.



**DETAIL 'A' - PLYWOOD/FLANGED CHANNEL POSTS**

**NOTES**

- MATERIALS: THE SIGN SHALL BE MANUFACTURED FROM BACKING MATERIALS COMPOSED OF (1) METAL-10 GA. STEEL OR 0.06\"/>