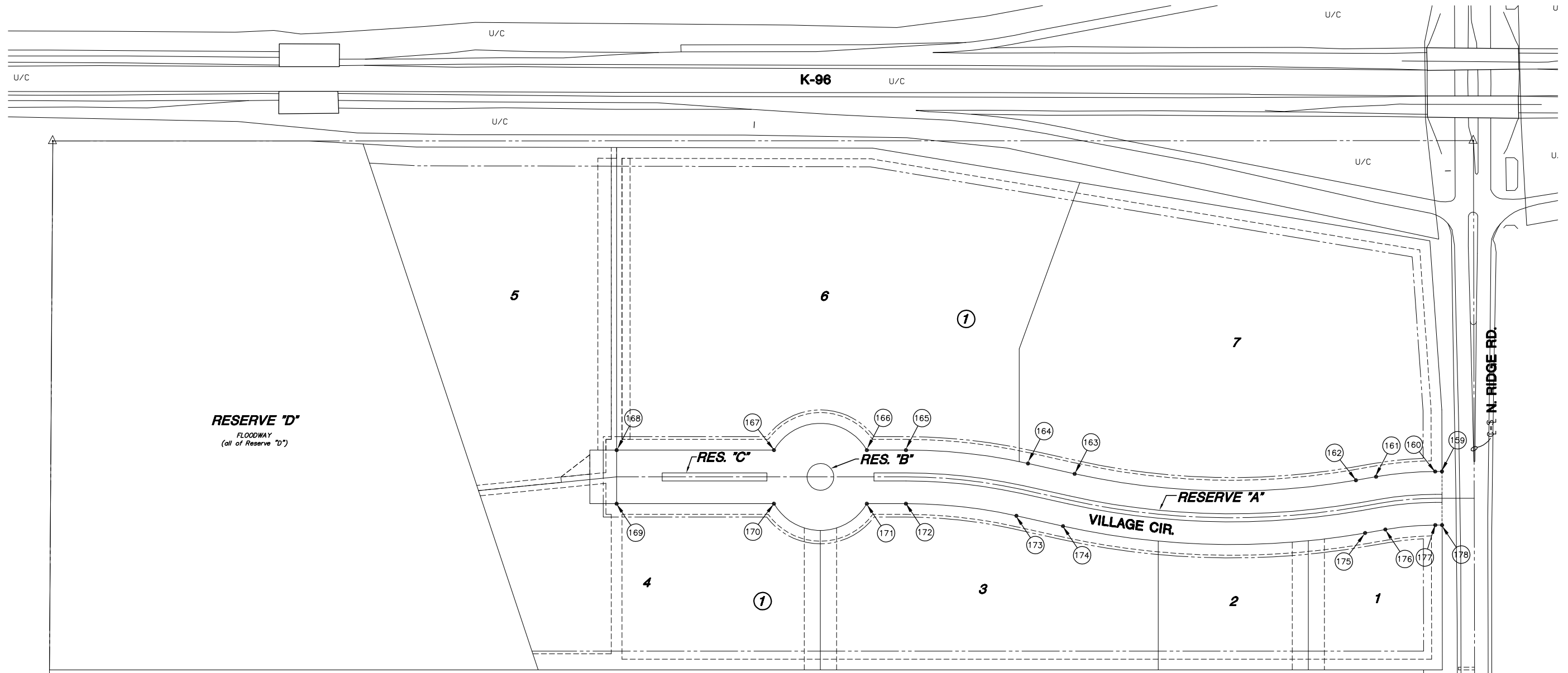
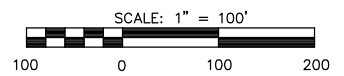


PHASE II GRADING PLANS FOR:
NORTH RIDGE VILLAGE ADDITION
LOTS 1 - 4
AN ADDITION TO THE CITY OF WICHITA
SEDGWICK COUNTY, KANSAS



RESERVE "D"
FLOODWAY
(all of Reserve "D")

Points	Northing	Easting
160	711062.25	622029.22
161	711062.25	622029.40
162	711074.74	622071.49
163	711075.27	622073.26
164	711077.27	622174.29
165	711082.27	622023.23
166	711081.47	622073.74
167	711083.23	622123.76
168	711085.25	622023.23
169	711087.27	622023.23
170	711087.27	622023.23
171	711092.27	622023.23
172	711092.27	622023.23
173	711097.27	622023.23
174	711097.27	622023.23
175	711097.27	622023.23
176	711097.27	622023.23
177	711097.27	622023.23
178	711097.27	622023.23
179	711097.27	622023.23
180	711097.27	622023.23
181	711097.27	622023.23
182	711097.27	622023.23
183	711097.27	622023.23
184	711097.27	622023.23
185	711097.27	622023.23
186	711097.27	622023.23
187	711097.27	622023.23
188	711097.27	622023.23
189	711097.27	622023.23
190	711097.27	622023.23



BUBBLE MAP
SHEET TITLE
04394
PROJECT #

MAB
DESIGN BY
MKEC
DRAWN BY
MAB/JAG
CHECKED BY

ISSUED
11 JANUARY 2006
REVISED

SHEET NO.
11 of 12