

FHWA REGION NO.	STATE	PROJECT NUMBER	FISCAL YEAR	SHEET NUMBER	TOTAL SHEETS
7	KANSAS			10	

CONSTRUCT 100mm A.C. PAVEMENT (3 000 WIDE). SLOPE LEFT.

STA. 1+000 BEGIN TRANSITION FROM 3 000 TO 2 500 WIDTH

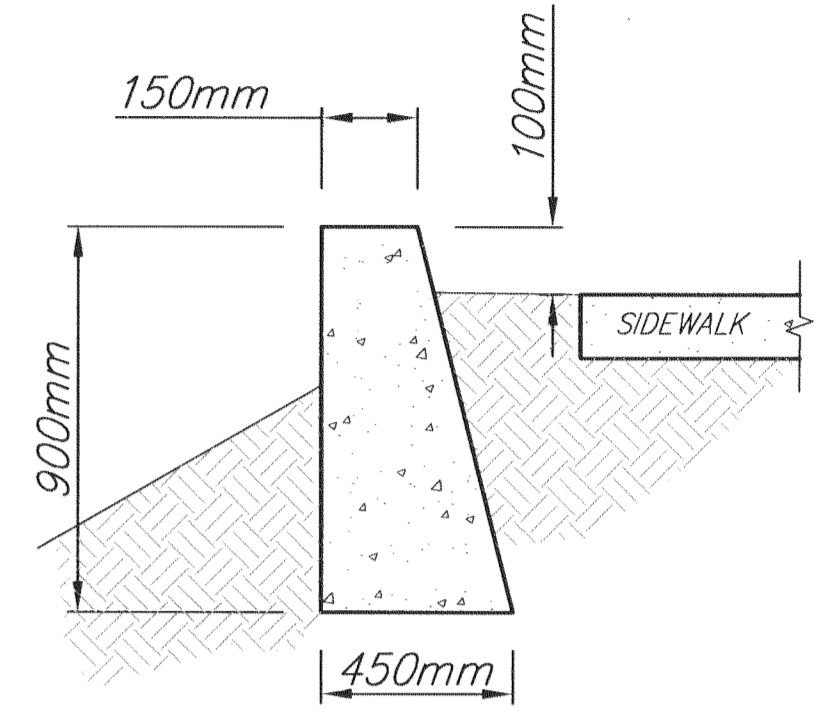
STA. 1+020 BEGIN 2 500 WIDTH PAVEMENT.

TAPER CURB FROM 170 mm TO 20 mm

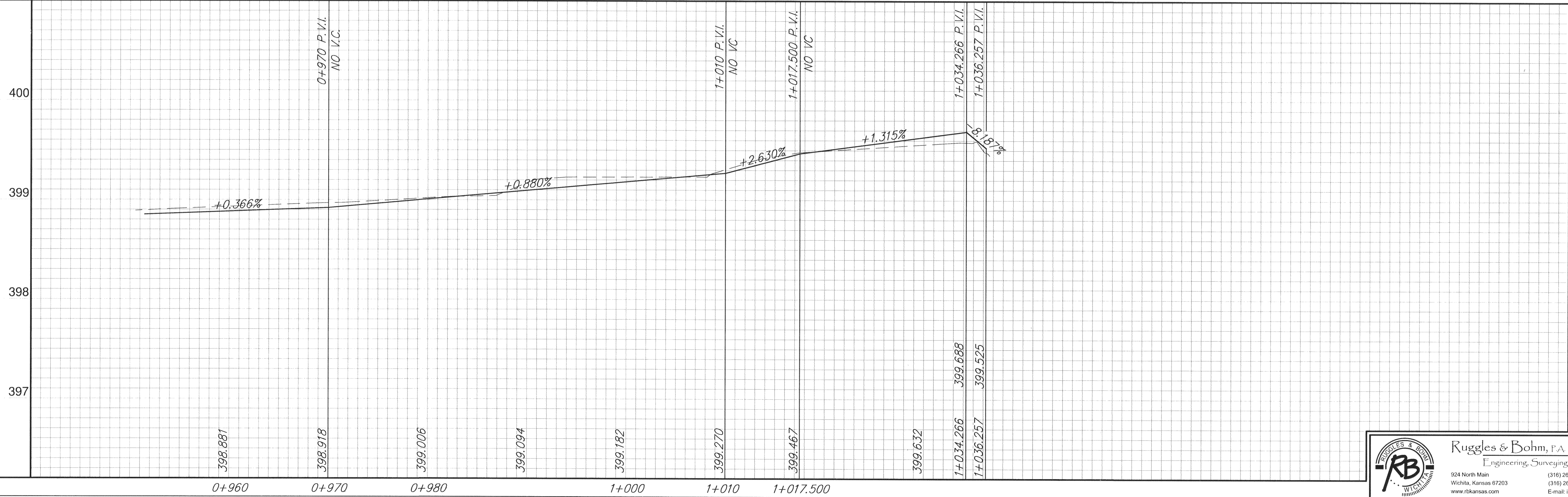
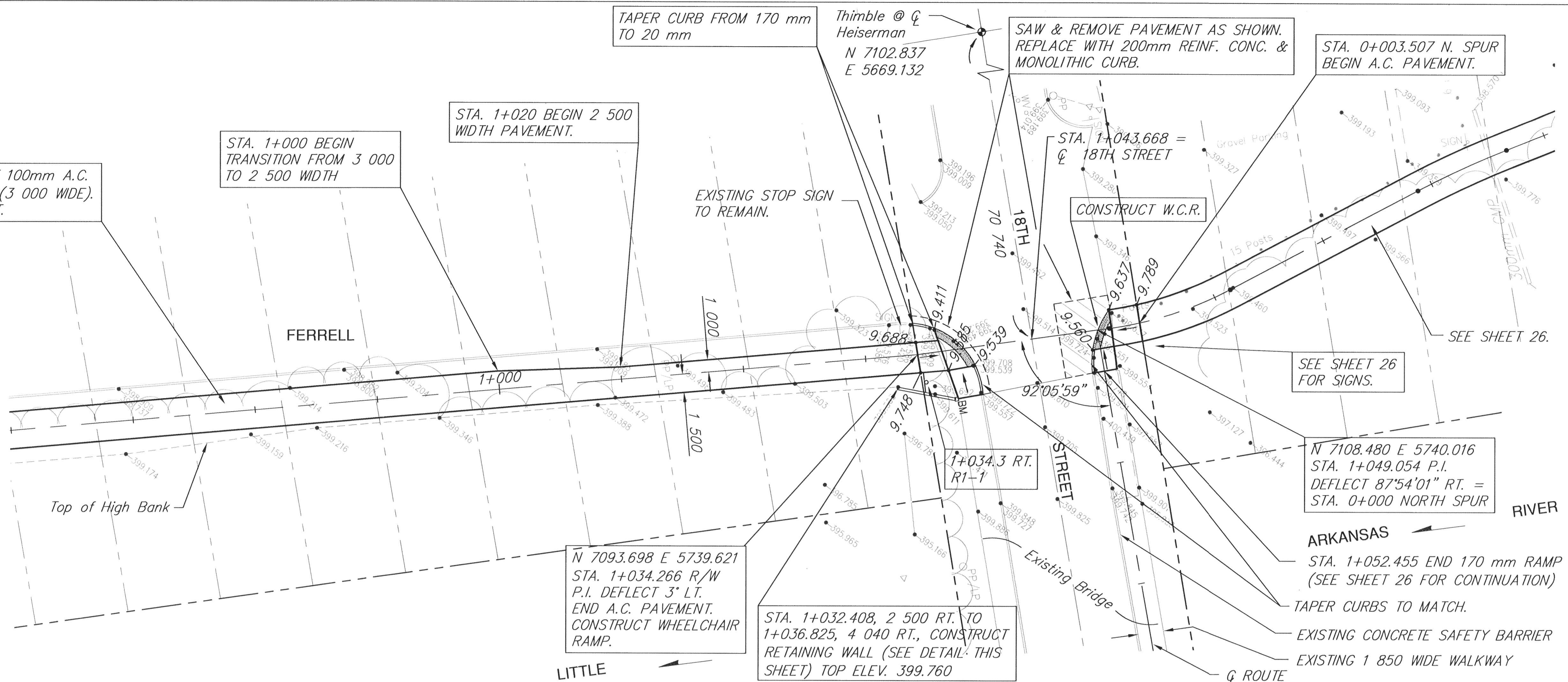
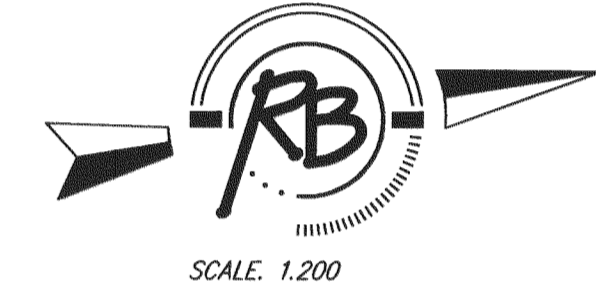
Thimble @ ϕ Heiserman
N 7102.837
E 5669.132

SAW & REMOVE PAVEMENT AS SHOWN. REPLACE WITH 200mm REINF. CONC. & MONOLITHIC CURB.

STA. 0+003.507 N. SPUR BEGIN A.C. PAVEMENT.



GRAVITY WALL DETAIL (CONCRETE)



400	NO V.C.	0+970 P.V.I.
399	NO V.C.	1+010 P.V.I.
398	NO V.C.	1+017.500 P.V.I.
397	NO V.C.	1+034.266 P.V.I.
		1+036.257 P.V.I.

PLAN AND PROFILE
LITTLE ARKANSAS RIVER
BICYCLE / PEDESTRIAN PATH

RB Ruggles & Bohm, P.A.
Engineering, Surveying, Land Planning
924 North Main
Wichita, Kansas 67203
www.rbkansas.com
(316) 264-8008
(316) 264-4821 fax
E-mail: info@rbkansas.com

RB JOB 2088T
SHEET 10 OF 10