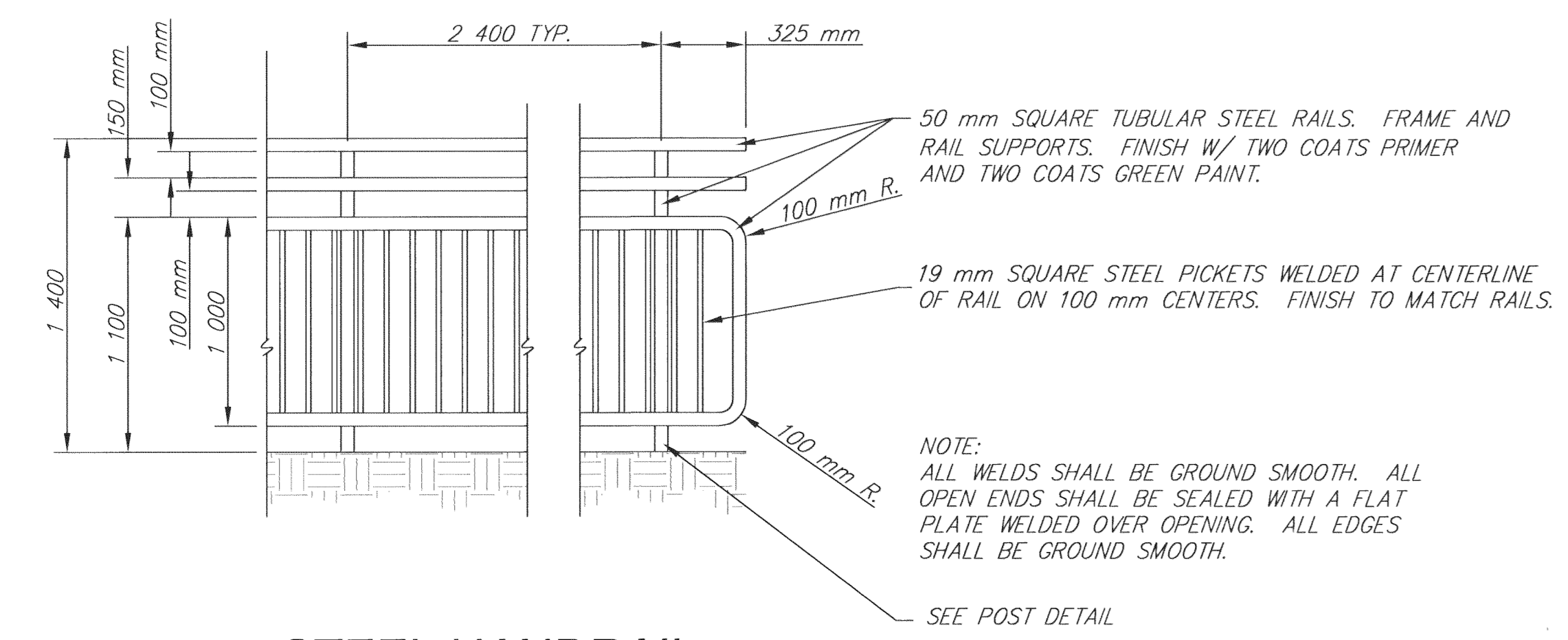
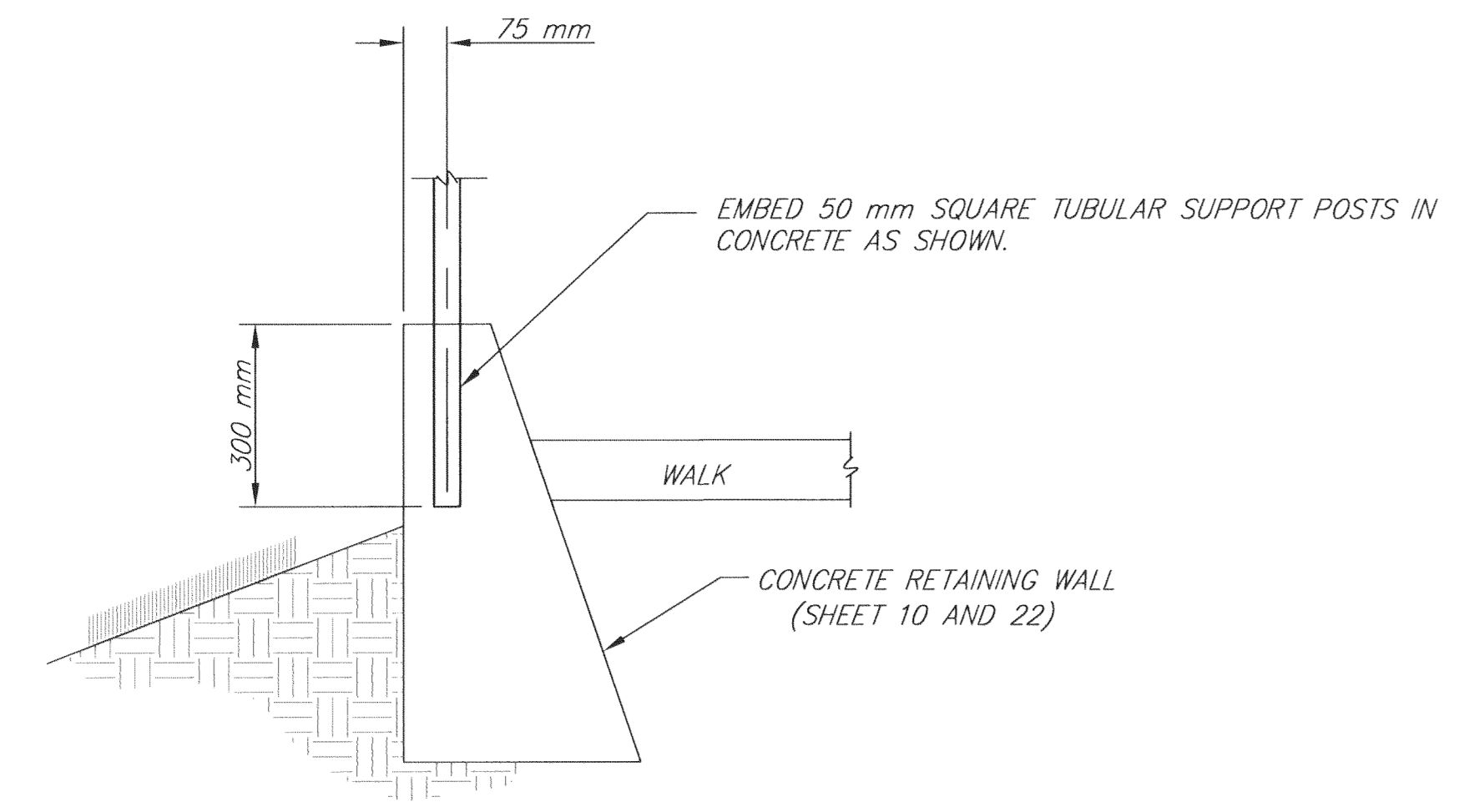


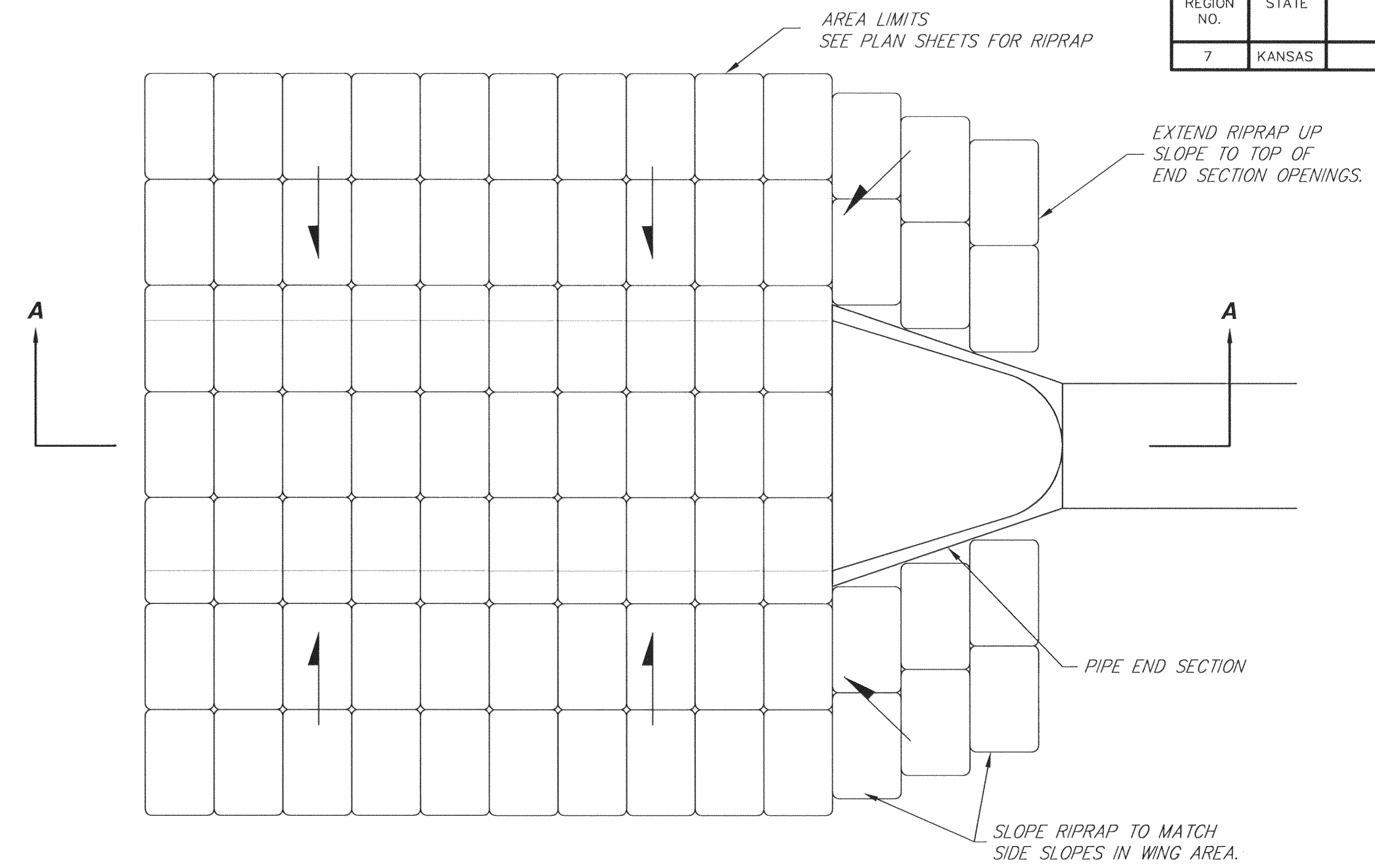
FHWA REGION NO.	STATE	PROJECT NUMBER	FISCAL YEAR	SHEET NUMBER	TOTAL SHEETS
7	KANSAS	XXXX	2003	31	X



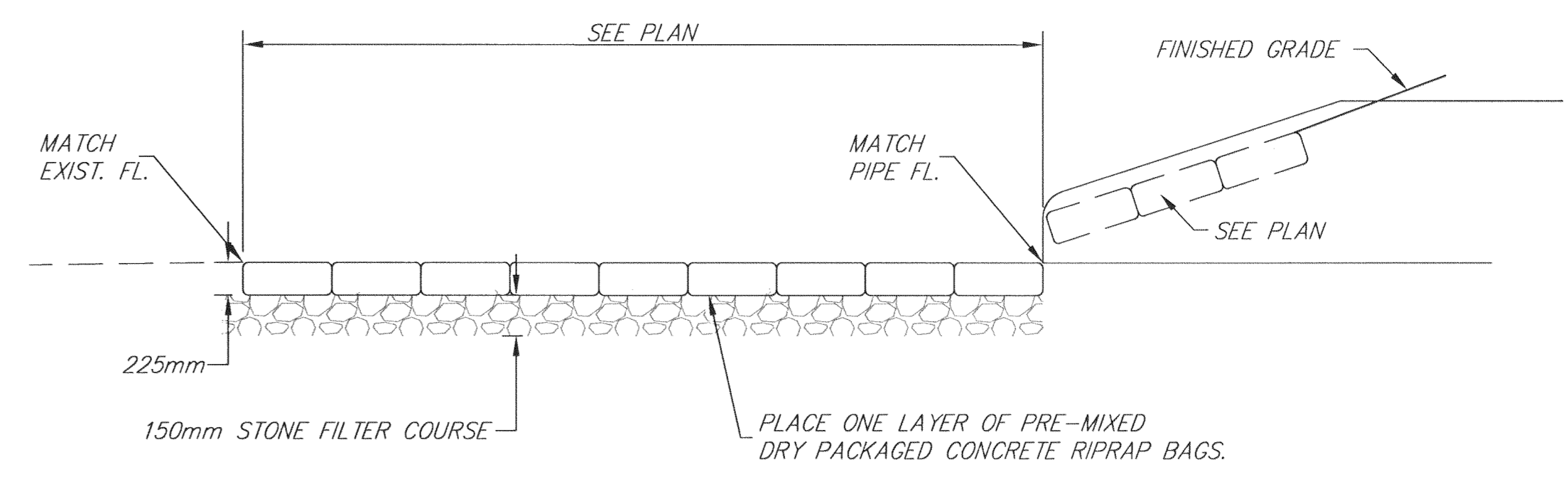
STEEL HANDRAIL



POST DETAIL

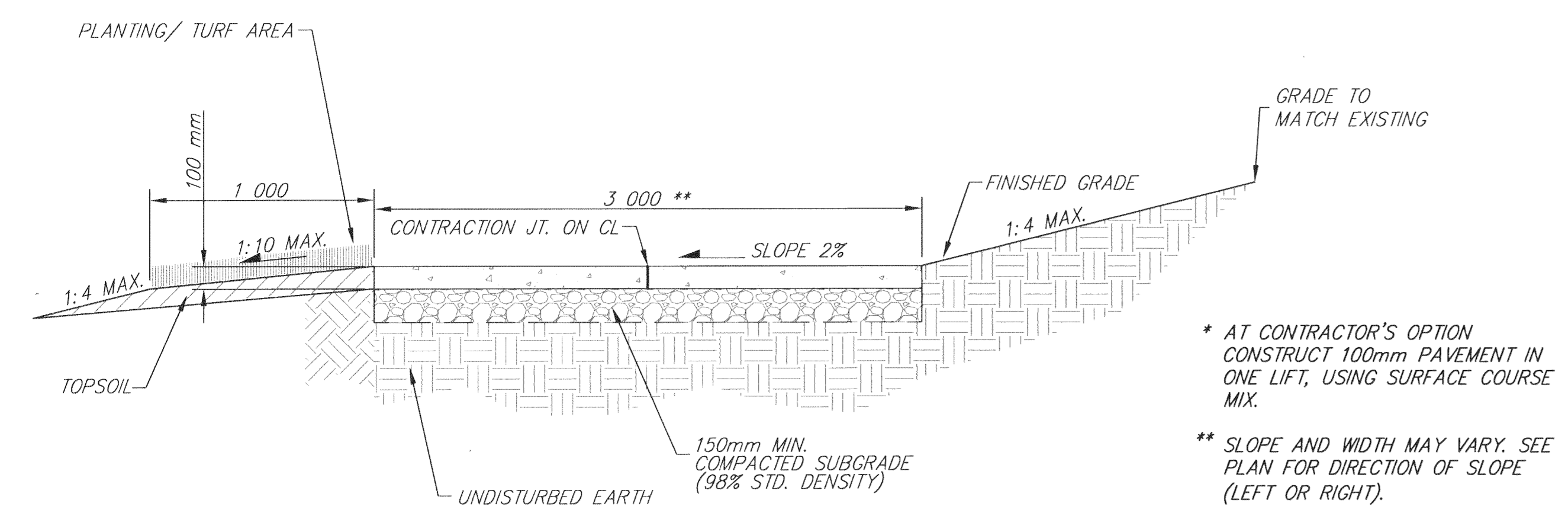


PLAN



SECTION A-A

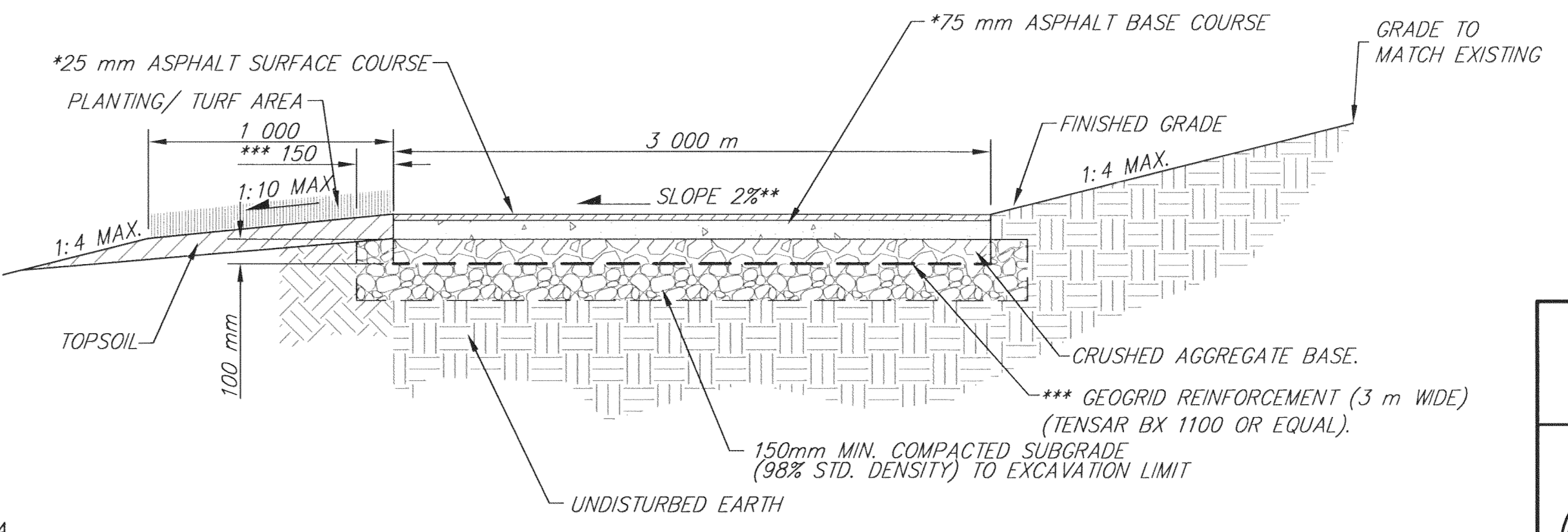
CONCRETE BAG RIPRAP DETAIL



CONCRETE PAVEMENT

(TRANSVERSE CONTRACTION JOINTS TO BE PLACED @ 1500 mm SPACING)

- * AT CONTRACTOR'S OPTION CONSTRUCT 100mm PAVEMENT IN ONE LIFT, USING SURFACE COURSE MIX.
- ** SLOPE AND WIDTH MAY VARY. SEE PLAN FOR DIRECTION OF SLOPE (LEFT OR RIGHT).
- *** GEOGRID REINFORCEMENT AND EXTRA WIDTH OF COMPACTED SUBGRADE AND AGGREGATE BASE ARE SUBSIDIARY TO BID ITEM FOR SQ. METERS A.C. PAVEMENT.



100 mm ASPHALTIC CONCRETE PATH

MISCELLANEOUS DETAILS

DESIGN TCR
DRAWN RA
REVIEW RA
UTILITY
DATE Apr. 13, 2004

Ruggles & Bohm, P.A.
Engineering, Surveying, Land Planning

924 North Main
Wichita, Kansas 67203
www.rbkansas.com

(316) 264-8008
(316) 264-4621 fax
E-mail: info@rbkansas.com

DRAWING FILE Miscdetails 2
PROJECT NUMBER
SHEET 31 OF