

GENERAL SITE LAYOUT NOTES

- SITE LAYOUT IS BASED ON POINTS ORIGINATING FROM GROUND SURVEY AND BASE PLAN INFORMATION PROVIDED BY RUGGLES & BOHM. ALL COORDINATE AND DIMENSIONAL INFORMATION PROVIDED ON THESE DRAWINGS SHALL BE VERIFIED PRIOR TO FIELD STAKING AND CONSTRUCTION.
- ALL WRITTEN DIMENSIONS SHALL TAKE PRECEDENCE OVER SCALED DIMENSIONS.
- GENERAL CONTRACTOR TO CALL KANSAS ONE—CALL 48 HOURS PRIOR TO BEGINNING DEMOLITION WORK AT 316-687-2470 OR 1-800-DIG-SAFE.
- UNDERGROUND FACILITIES, STRUCTURES AND UTILITIES ARE FROM DISK PROVIDED BY CIVIL ENGINEER. THEREFORE, THE RELATIONSHIP BETWEEN PROPOSED WORK AND EXISTING FACILITIES STRUCTURES AND UTILITIES MUST BE CONSIDERED APPROXIMATE AND SUBJECT TO CHANGE. IT IS THE CONTRACTOR'S RESPONSIBILITY TO DETERMINE THEIR EXACT LOCATIONS AND THE EXISTENCE OF ANY NOT SHOWN, AND TO NOTIFY THE LANDSCAPE ARCHITECT AND CIVIL ENGINEER IMMEDIATELY OF ANY DISCREPANCIES AND VERIFY EXISTING CONDITIONS PRIOR TO COMMENCING WORK.
- GENERAL CONTRACTOR TO CONTACT ALL LOCAL UTILITIES PRIOR TO THE BEGINNING OF ANY CONSTRUCTION TO COORDINATE THE LOCATION OF UTILITIES AND THE POSSIBLE RELOCATION OF EXISTING UTILITIES.
 - KANSAS GAS SERVICE:.....383-8600
 - WESTAR:.....383-8650
 - SOUTHWESTERN BELL:.....1-800-344-7233
 - COX COMMUNICATIONS:.....262-0661
 - WICHITA WATER & SEWER DEPARTMENT:.....268-4515
 - WICHITA ENGINEERING DEPARTMENT:.....268-4501
 - OFFICE OF CENTRAL INSPECTION:.....268-4461
- THE CONTRACTOR SHALL RESTORE TO THE ORIGINAL CONDITION, ANY ADJACENT (OFF-SITE) PROPERTY DISTURBED BY HIS OPERATIONS, AND SHALL BE RESPONSIBLE FOR ALL DAMAGES AND ASSOCIATED COSTS AT NO EXPENSE TO OWNER.
- THE GENERAL CONTRACTOR IS RESPONSIBLE FOR COORDINATING ALL WORK ON SITE. THIS INCLUDES BUT IS NOT LIMITED TO: COORDINATION BETWEEN THE CIVIL ENGINEERING BIKE PATH PLANS AND THE SITE LAYOUT PLANS, THE BRIDGE CONSTRUCTION AND BRIDGE LANDINGS, STRUCTURAL DETAILS AND SITE DETAILS. ANY DISCREPANCIES BETWEEN PLANS MUST BE BROUGHT TO THE ATTENTION OF THE LANDSCAPE ARCHITECT FOR RESOLUTION.
- COORDINATE POINTS ARE GIVEN FOR THE PC, PT, AND MIDPOINTS OF ALL PATHS THAT ARE NOT SHOWN ON THE CIVIL ENGINEERING DRAWINGS. COORDINATE POINTS ARE ALSO SHOWN FOR POINTS OF INTERSECTION OF SITE IMPROVEMENTS.
- ALL QUANTITIES ARE BASED ON PLAN—VIEW DISTANCE AND AREA. CONTRACTOR SHALL BE RESPONSIBLE FOR DETERMINING ACTUAL QUANTITIES BASED UPON ACTUAL FIELD CONDITIONS AND PROPOSED WORK.
- THE GENERAL CONTRACTOR IS RESPONSIBLE FOR THE PROPOSED DRINKING FOUNTAIN. THE GENERAL CONTRACTOR SHALL COORDINATE THE ASSOCIATED WORK WITH THE FOUNTAIN SUBCONTRACTOR AND SUPPLY NECESSARY SLEEVES AND SERVICE LINES.
- THE GENERAL CONTRACTOR SHALL SUBMIT REQUIRED SHOP DRAWINGS FOR REVIEW AND APPROVAL BY LANDSCAPE ARCHITECT A MINIMUM OF SIX (6) WEEKS PRIOR TO SCHEDULED FABRICATION, INSTALLATION, OR CONSTRUCTION OF THOSE ITEMS.
- ALL NATURAL LIMESTONE SHALL BE FROM THE SAME APPROVED QUARRY. QUARRY MARKS AND OTHER SIMILAR BLEMISHES TO THE STONE WILL NOT BE ACCEPTED. EMPLOY AN EXPERIENCED STONE MASON TO CUT THE STONE BOULDERS.
- PRIOR TO PURCHASE AND DELIVERY OF NATURAL STONE AND BOULDERS, THE GENERAL CONTRACTOR SHALL CONTACT THE LANDSCAPE ARCHITECT FOR A MATERIALS INSPECTION AND APPROVAL AT THE MATERIAL'S SOURCE OR SOURCES. CONTRACTOR SHALL REIMBURSE THE COST OF TRAVEL FOR TRAVEL DISTANCES GREATER THAN 100 MILES (ONE WAY).
- GENERAL CONTRACTOR TO EMPLOY ONLY EXPERIENCED INDIVIDUALS FOR SANDBLASTING OPERATIONS ON BOULDERS. SUBMIT SHOP DRAWINGS FOR SANDBLASTING INCLUDING: TEXT FONT, SIZE, DEPTH, PAINT MANUFACTURER, AND METHODS.
- GENERAL CONTRACTOR SHALL BE RESPONSIBLE FOR MAINTAINING SLOPES AND CLEARANCES THAT COMPLY WITH CURRENT ADA SPECIFICATIONS FOR ACCESSIBILITY. THIS INCLUDES NO CROSS SLOPES OF OVER 2% AND NO LONGITUDINAL SLOPES OF OVER 5%.
- GENERAL CONTRACTOR SHALL INTEGRALLY COLOR THE CONCRETE BIKE PATH AS SHOWN PASSING THROUGH PAUSE POINTS B THRU D. THE CONCRETE AT PAUSE POINT A SHALL BE PLAIN CONCRETE WITH NO INTEGRAL COLOR. THE INTEGRAL COLOR MUST BE USED AS SPECIFIED BY THE MANUFACTURER. SUBMIT MANUFACTURER'S COLOR RANGE CHART FOR FINAL COLOR SELECTION PRIOR TO ORDERING. APPROVED MANUFACTURERS FOR THE INTEGRAL COLOR ARE LISTED BELOW.
 - LM SCOFIELD COMPANY
 - QC CONSTRUCTION PRODUCTS
 - INCRETE SYSTEMS

COLOR: CHARCOAL

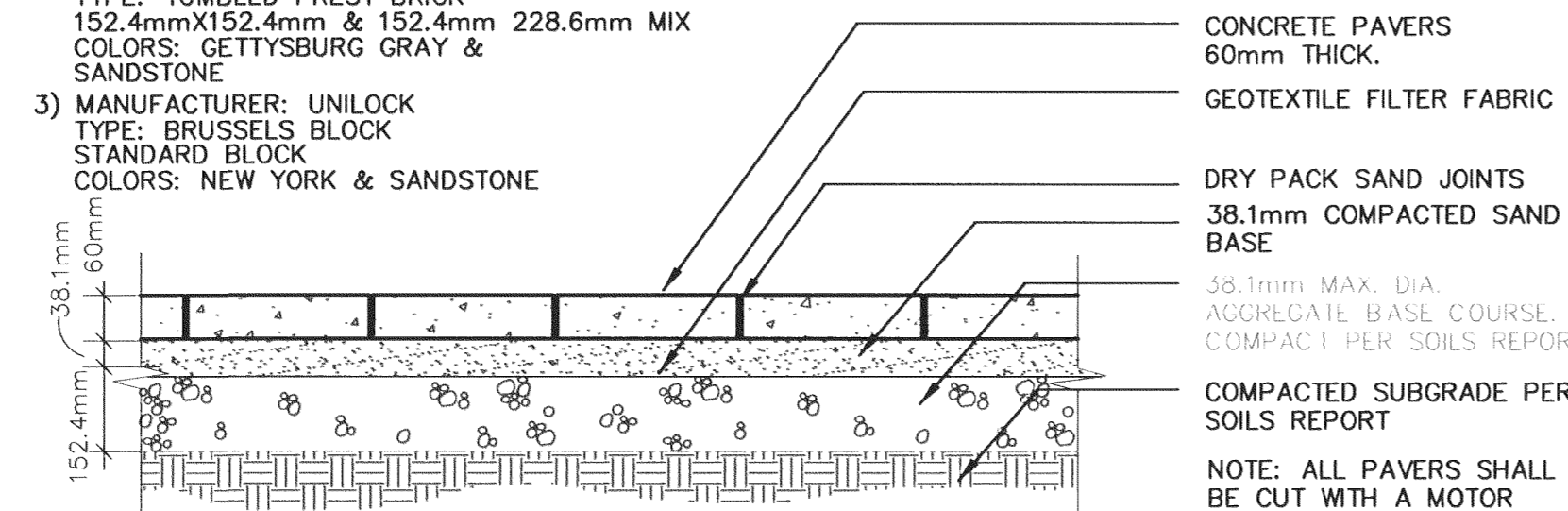
CONCRETE PAVER SPECIFICATION:

APPROVED PRODUCTS:

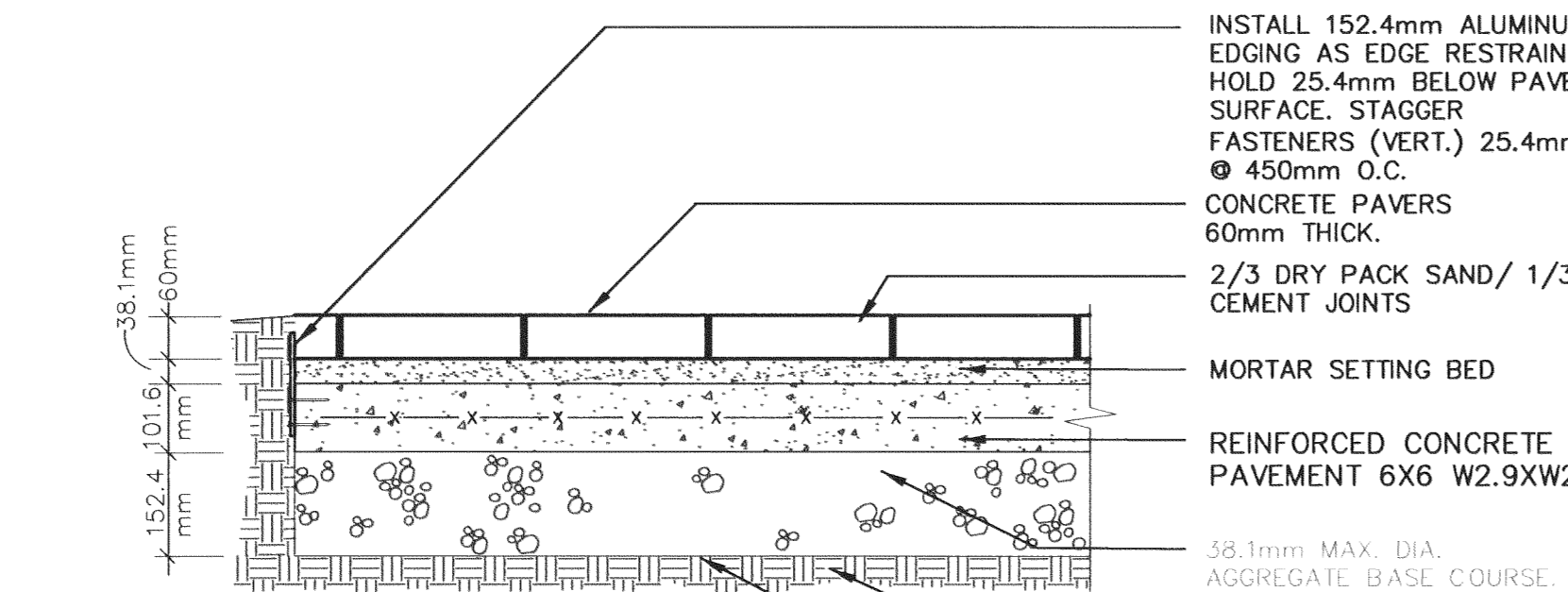
- MANUFACTURER: PAVESTONE
TYPE: PLAZA STONE SERIES
FINISH: HERITAGE SERIES (TUMBLED)
PLAZA 1 & PLAZA 2 STONE
COLORS: CHARCOAL & SANDSTONE
- MANUFACTURER: HANOVER ARCH. PRODUCTS
TYPE: TUMBLED PREST BRICK
152.4mmX152.4mm & 152.4mm 228.6mm MIX
COLORS: GETTYSBURG GRAY & SANDSTONE
- MANUFACTURER: UNILOCK
TYPE: BRUSSELS BLOCK
STANDARD BLOCK
COLORS: NEW YORK & SANDSTONE

CONCRETE PAVER COLOR:

COLOR A: CHARCOAL
COLOR B: SANDSTONE
SUBMIT MANUFACTURER'S COLOR CHART FOR FINAL SELECTION PRIOR TO ORDERING PAVERS.

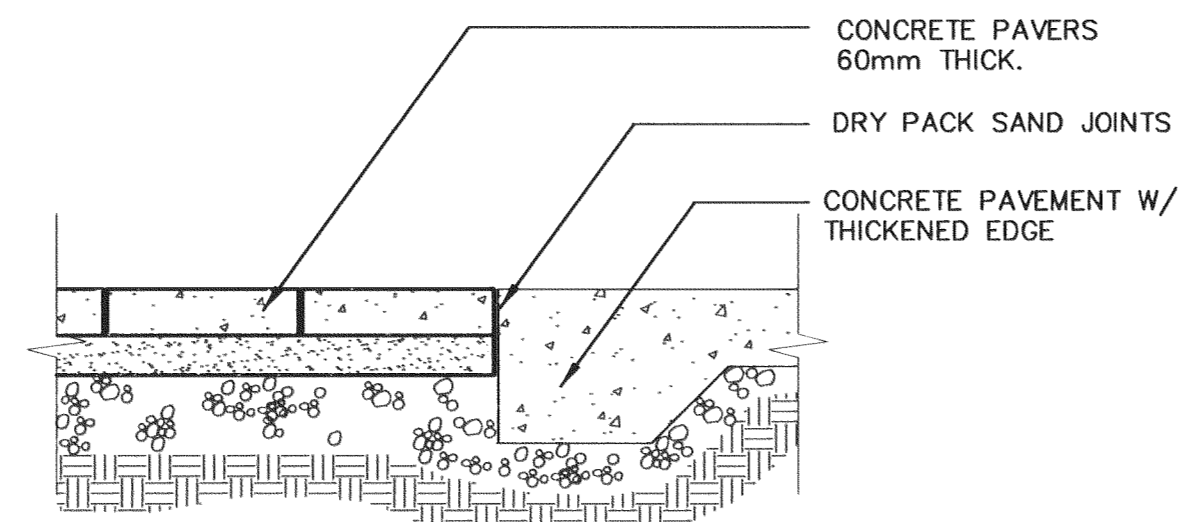


B AGGREGATE BASE

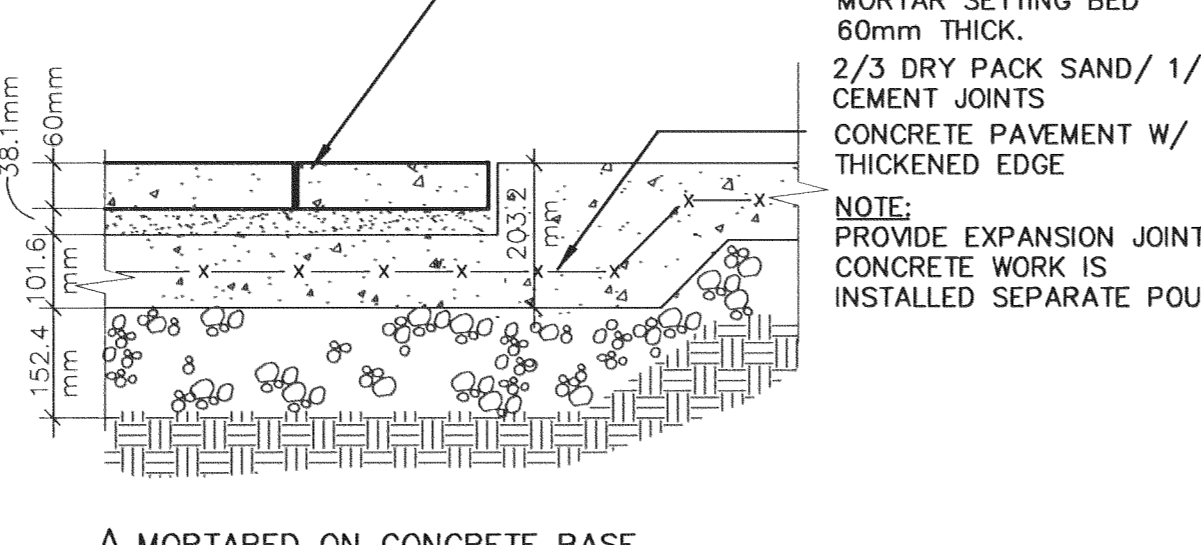


A MORTARED ON CONCRETE BASE

2 CONCRETE PAVERS
SCALE: 1:100

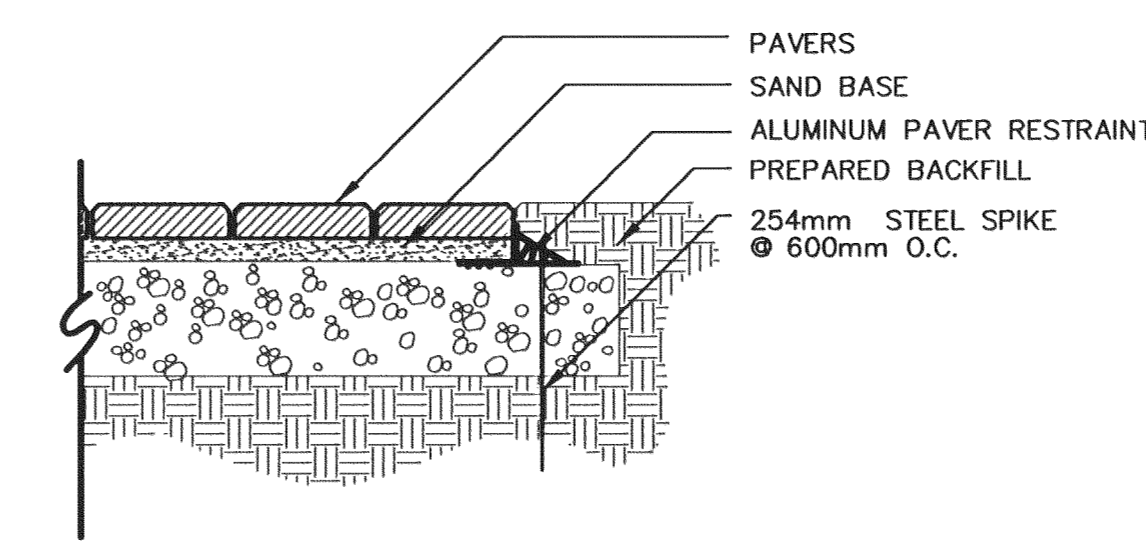


B AGGREGATE BASE

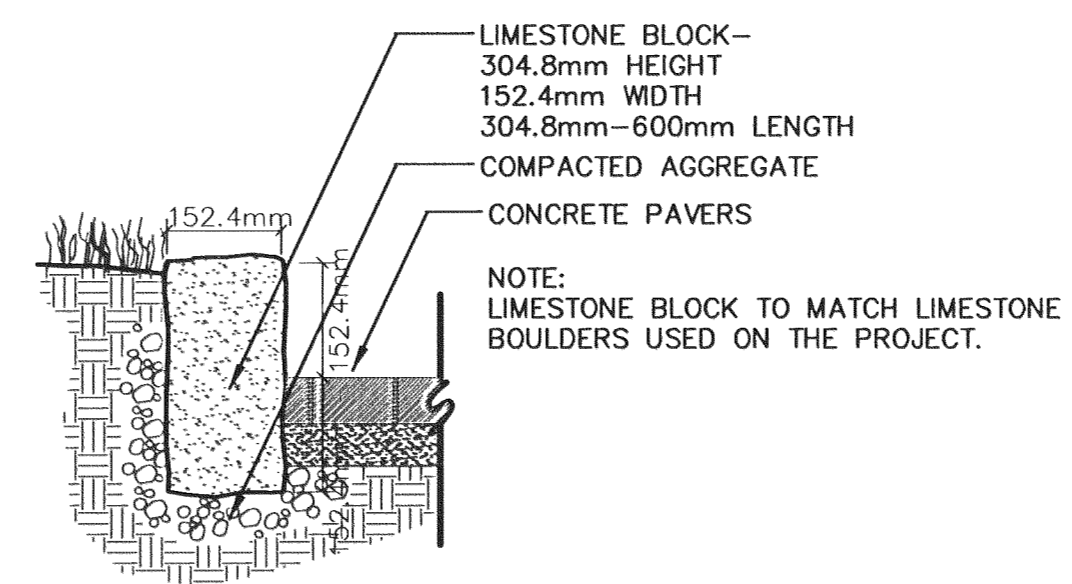


A MORTARED ON CONCRETE BASE

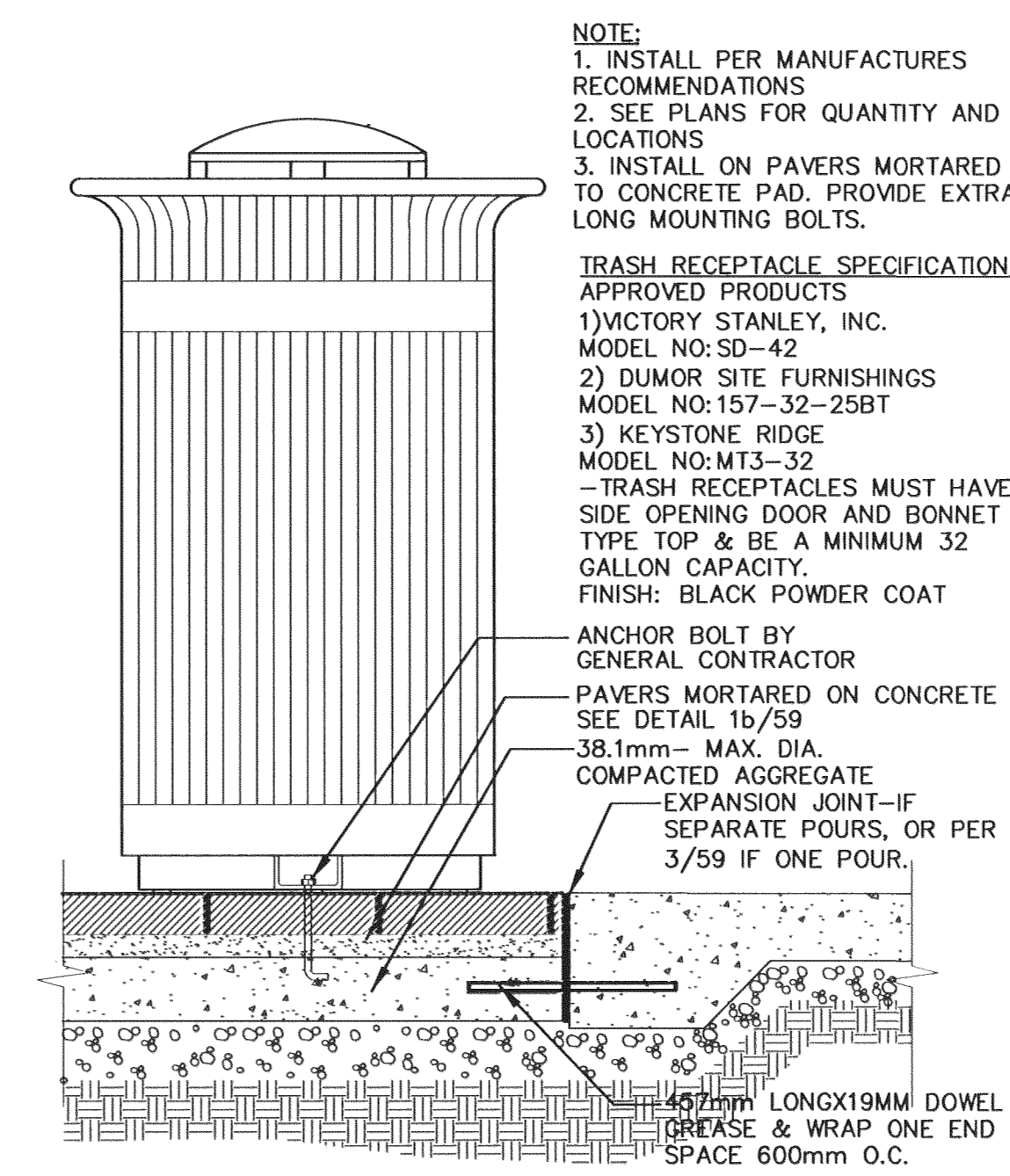
3 CONCRETE PAVERS / CONCRETE INTERFACE
SCALE: 1:100



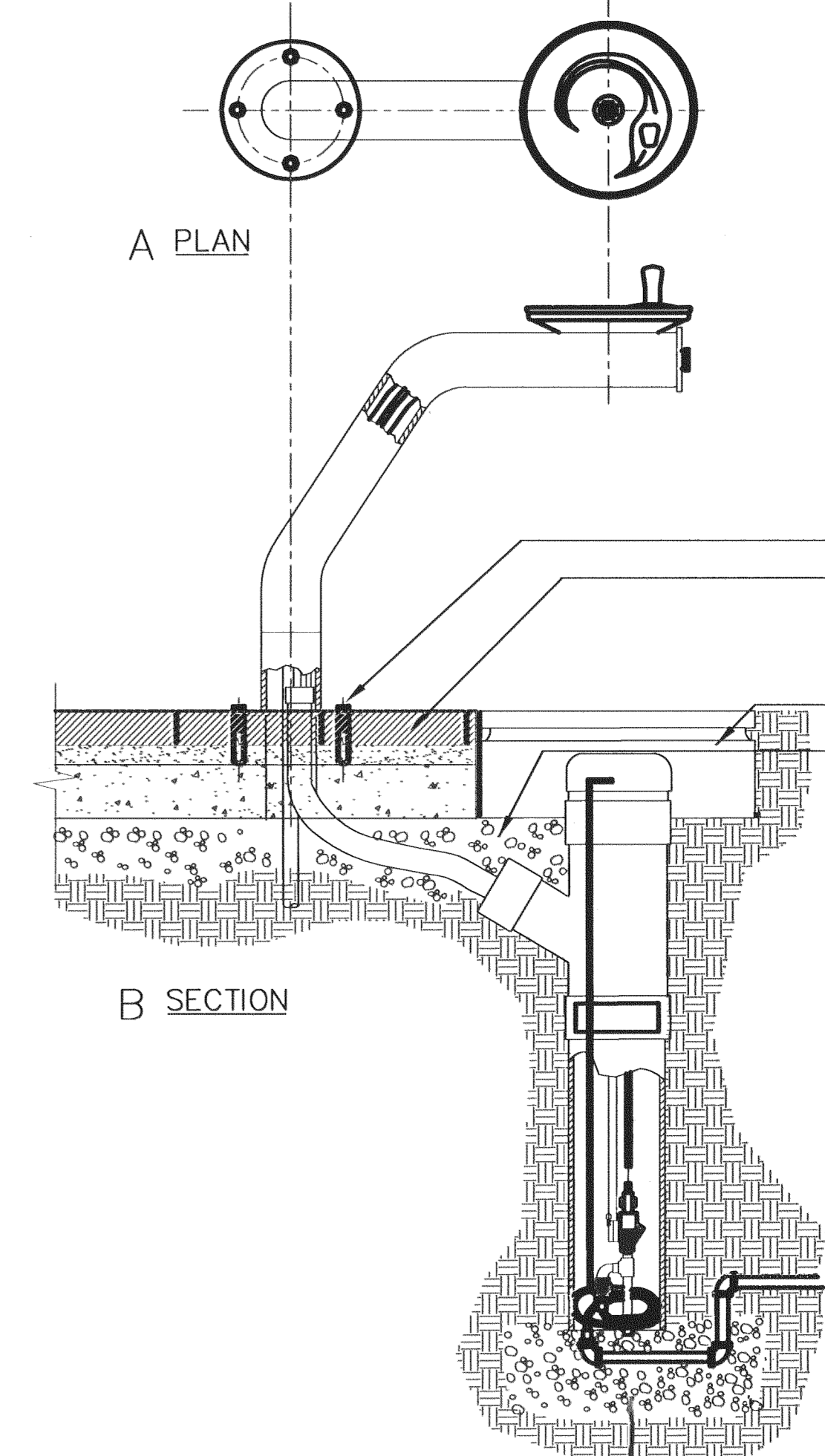
4 PAVER EDGE RESTRAINT
SCALE: 1:100



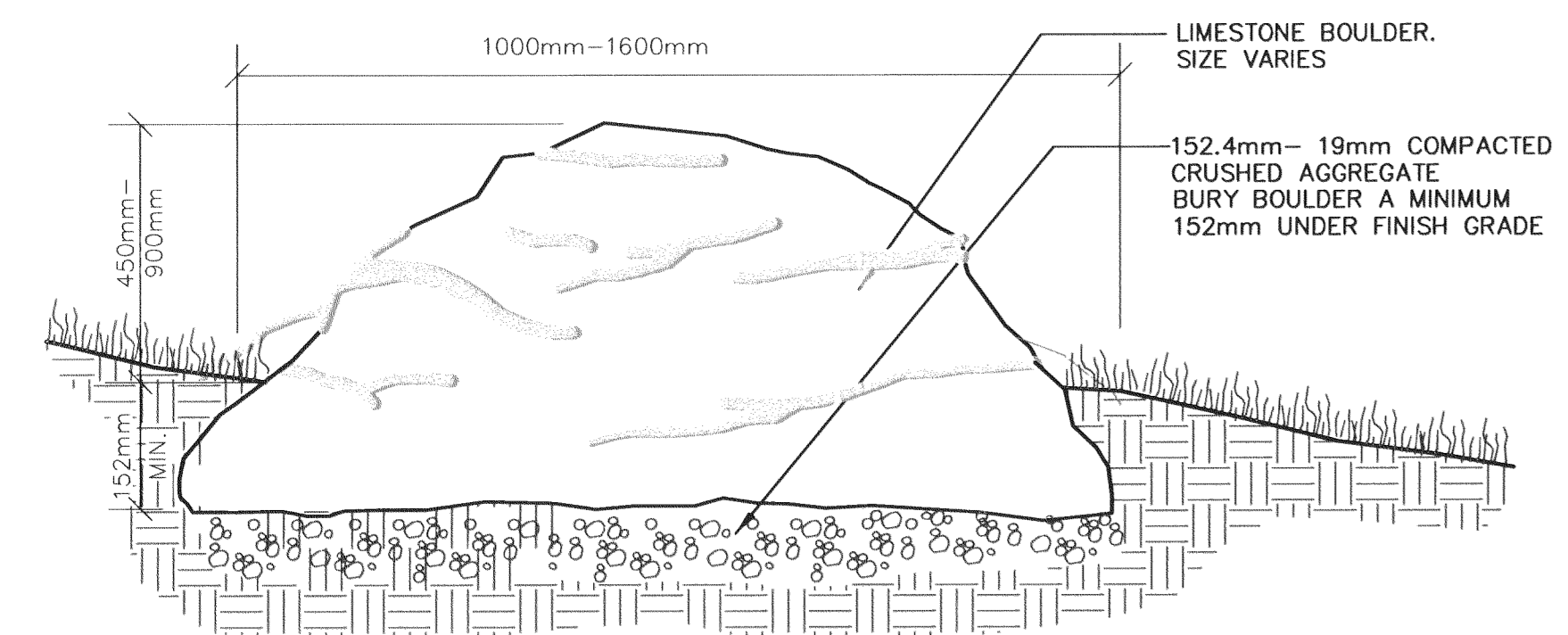
5 STONE BLOCK EDGE
SCALE: 1:100



6 TRASH RECEPTACLE
SCALE: 1:100



7 DRINKING FOUNTAIN
SCALE: 1:100



BOULDER SIZES	
#	AVE. DIA. x HEIGHT
b1	36" x 72"
b2	24" x 36"
b3	48" x 48"
b4	36" x 36"

NOTE: LIMESTONE BOULDERS SHALL BE FREE OF QUARRY MARKS AND OTHER EQUIPMENT ABRASIONS OR MARKINGS. FINAL PLACEMENT TO BE FIELD DIRECTED BY LANDSCAPE ARCHITECT. SELECTION OF BOULDER TO BE APPROVED BY LANDSCAPE ARCHITECT SOURCE PRIOR TO PURCHASE AND DELIVERY.

1 STONE BOULDER
SCALE: 1:100

FHWA REGION NO.	STATE	PROJECT NUMBER	FISCAL YEAR	SHEET NUMBER	TOTAL SHEETS

LAW/KINGDON, INC.
ARCHITECTS & ENGINEERS
345 RIVERVIEW, WICHITA, KS 67203
Phone (316) 268-0200 Fax (316) 268-0205
Copyright © 2004

SITE NOTES & DETAILS LITTLE ARKANSAS RIVER BICYCLE / PEDESTRIAN PATH



Ruggles & Bohm, P.A.
Engineering, Surveying, Land Planning
924 North Main
Wichita, Kansas 67203
www.rbkansas.com
(316) 264-8008
(316) 264-4621 fax
E-mail: info@rbkansas.com

DRAWING FILE	PROJECT NUMBER	DATE
DETAILS.DWG	472-83436	JUNE 11, 2004

DESIGN	JB/KS	SHEET
DRAWN	JB	
REVIEW	KS	59
UTILITY		OF
		63