

STA. 14+51.60, LINE 1  
4' X 4.5' AREA INLET  
W/ SEDIMENT BARRIER  
& PVMT. UNDERDRAIN  
TOP=1345.5 AB  
N=1704548.40 E=1664533.73

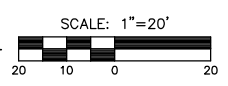
STA. 16+52.37, LINE 1=  
STA. 10+00.00, LINE 2  
INSTALL 2' X 2' DROP INLET  
W/ SEDIMENT BARRIER  
TOP=1343.7  
N=1704551.22 E=1664734.35  
ADJUST TOP=1347.7 AB  
REBUILD INVERT

STA. 17+35.03, LINE 1  
INSTALL 2' X 2' DROP INLET  
W/ SEDIMENT BARRIER  
TOP=1343.7  
N=1704558.11 E=1664816.86  
ADJUST TOP=1348.5 AB  
REBUILD INVERT

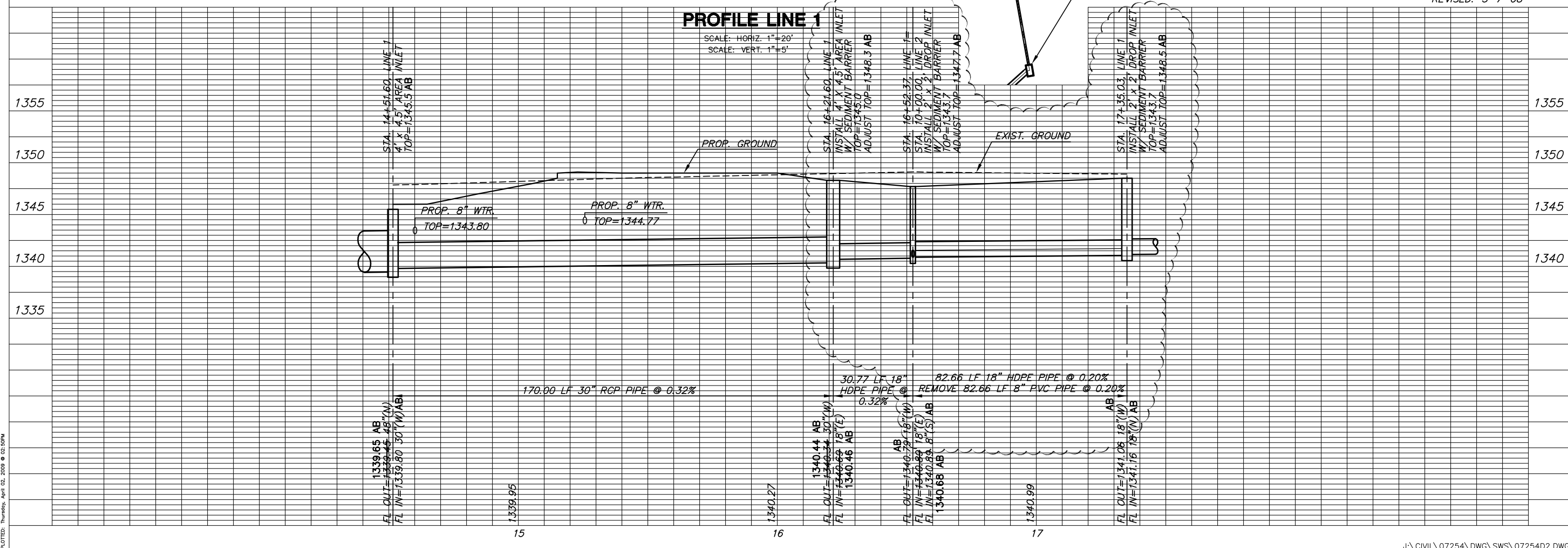
STA. 16+21.60, LINE 1  
INSTALL 4' X 4.5' AREA INLET  
W/ SEDIMENT BARRIER  
TOP=1345.0  
N=1704550.90 E=1664703.60  
ADJUST TOP=1348.3 AB

STA. 10+94.66, LINE 2  
INSTALL 2' X 4' DROP INLET  
W/ SEDIMENT BARRIER  
TOP=1344.2  
N=1704457.99 E=1664750.66  
ADJUST TOP=1346.0 AB

**PLAN LINE 1 (CONT.)**



**AS-BUILT 4-1-09**  
REVISED: 3-7-08



**PROFILE LINE 1**

SCALE: HORIZ. 1"=20'  
SCALE: VERT. 1"=5'

PLOTTED: Thursday, April 02, 2009 @ 02:50PM

**LINE 1**  
SHEET TITLE  
07008 (CC)  
07254 (MKEC)  
PROJECT NUMBER

DESIGN BY: SRS  
DRAWN BY: JWC  
CHECKED BY: GJA

ISSUED: DECEMBER 2007  
REVISED: MARCH 2008

SHEET NO.  
**6 of 15**