

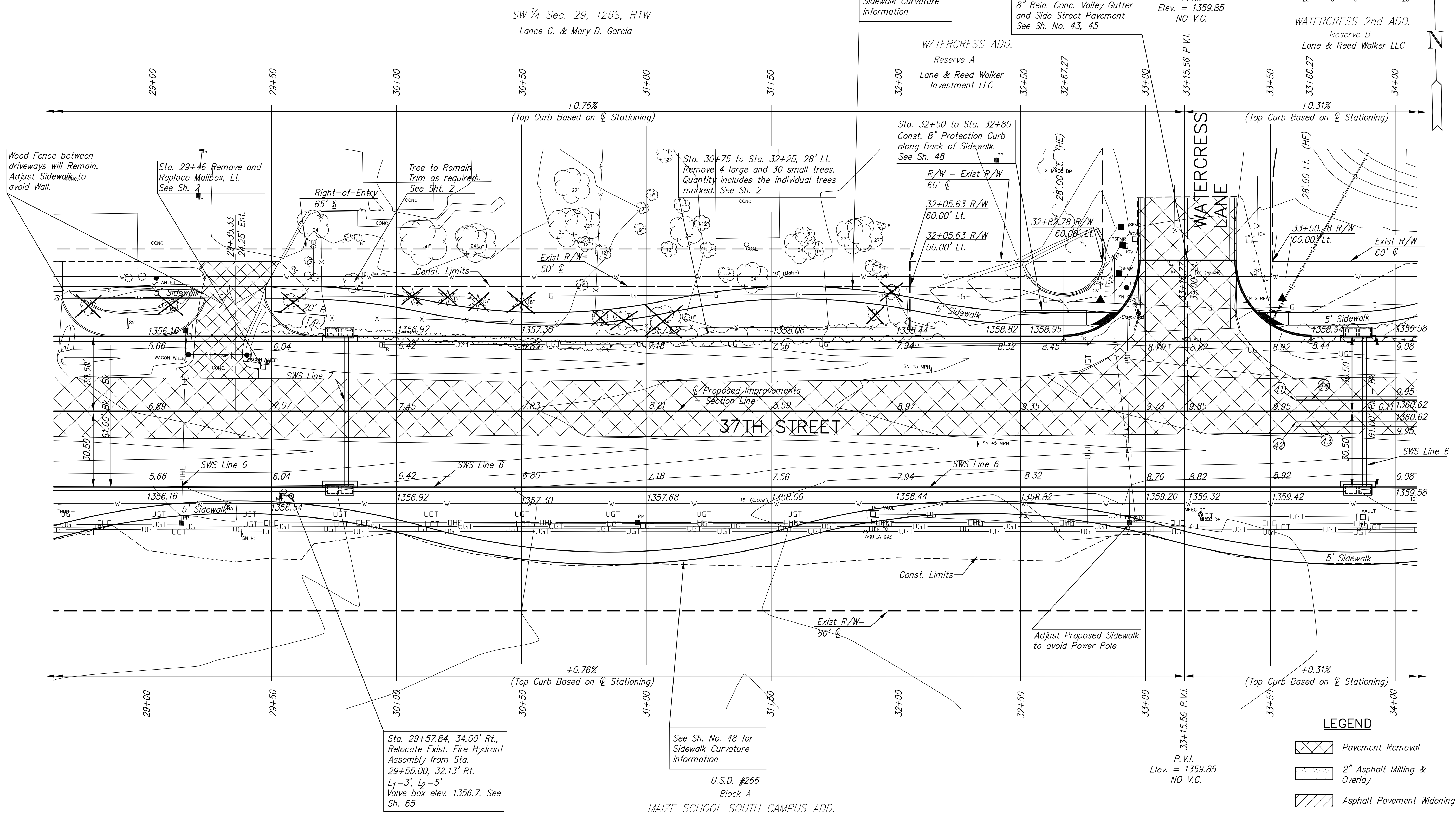
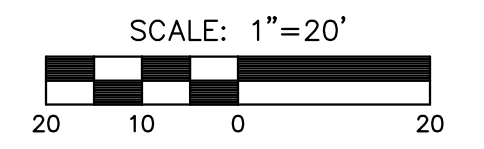
**37TH STREET IMPROVEMENTS
FROM
MAIZE ROAD TO TYLER ROAD**

**PLAN SHEET
STA 29+0.00
TO
STA 34+0.00**
SHEET TITLE
472-84693
PROJECT NUMBER

DESIGN BY
DRAWN BY
CHECKED BY

ISSUED
March 24, 2009
REVISED

SHEET NO.
10 of 133



UTILITY ADJUSTMENTS				
STATION	OFFSET	EXISTING ELEVATION	PROPOSED ELEVATION	REMARKS
33+11.32	55.7' Lt.	-	1359.58	Water Valve Box

MEDIAN LOCATION				
Point No.	Station	Offset to Back	Elevation	
			Flowline	Top Curb
41	33+60.27	4.25' Lt.	1359.83	1359.85
42	33+60.27	4.25' Rt.	1359.83	1359.85
43	33+66.27	4.25' Rt.	1359.85	1360.52
44	33+66.27	4.25' Lt.	1359.85	1360.52

- LEGEND**
- Pavement Removal
 - 2" Asphalt Milling & Overlay
 - Asphalt Pavement Widening
 - Brick Pavers
 - Construct Wheelchair Ramp See Sh. No. 49
 - Tree Removal

PLOTTED: Tuesday, March 24, 2009 @ 04:47PM

J:\Civil\08137.DWG\PAV\08137-EG