

**37TH STREET IMPROVEMENTS  
FROM  
MAIZE ROAD TO TYLER ROAD**

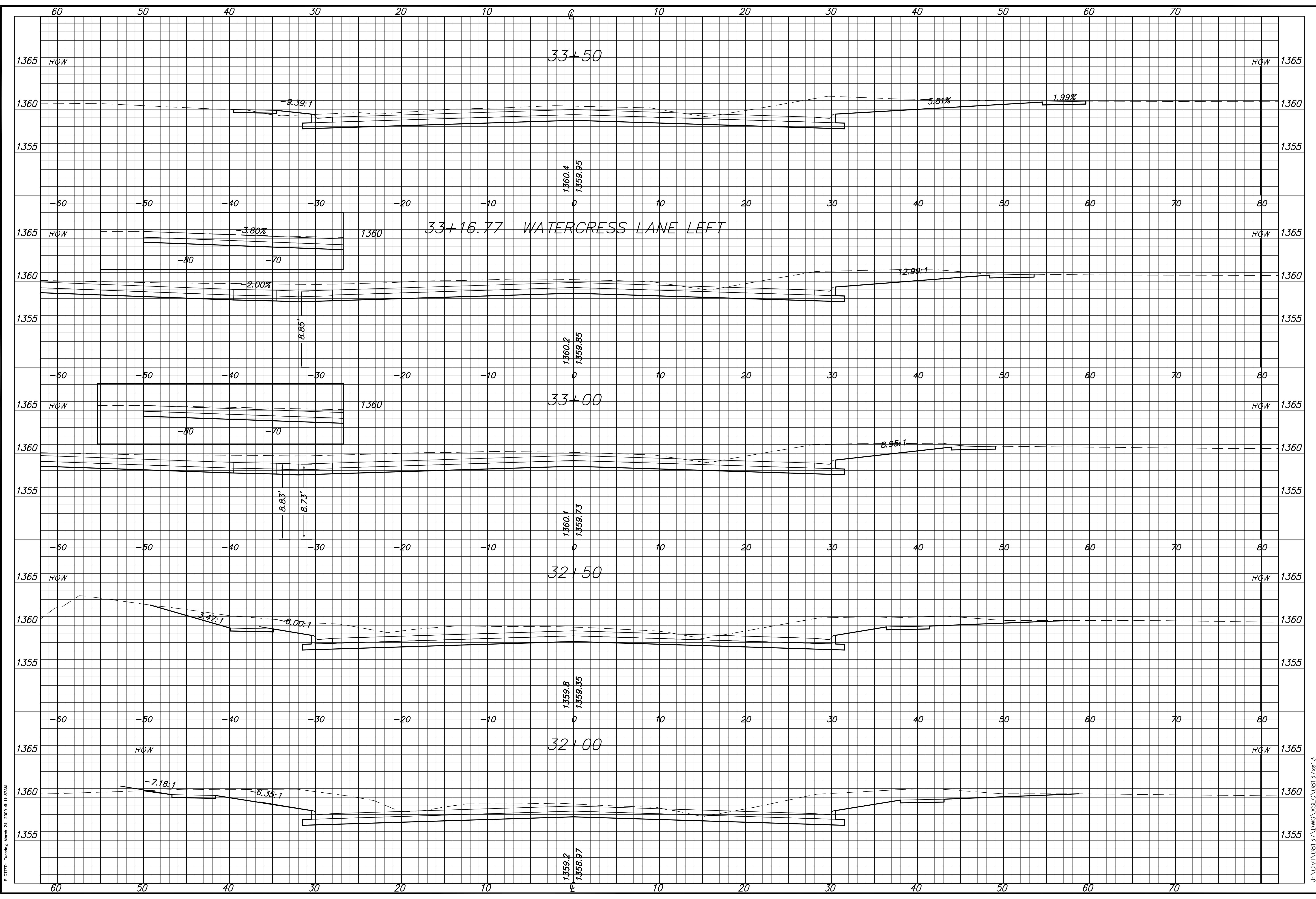
**CROSS SECTIONS  
STA 32+00.00  
TO  
STA 33+50.00**

SHEET TITLE  
472-84693  
PROJECT NUMBER

DESIGN BY: JRA  
DRAWN BY: DPG  
CHECKED BY: JRA

ISSUED: March 24, 2009  
REVISED:

SHEET NO.  
112 of 133



PLOTTED: Tuesday, March 24, 2009 @ 10:37 AM

J:\Civil\08137.DWG\XSEC\08137x613