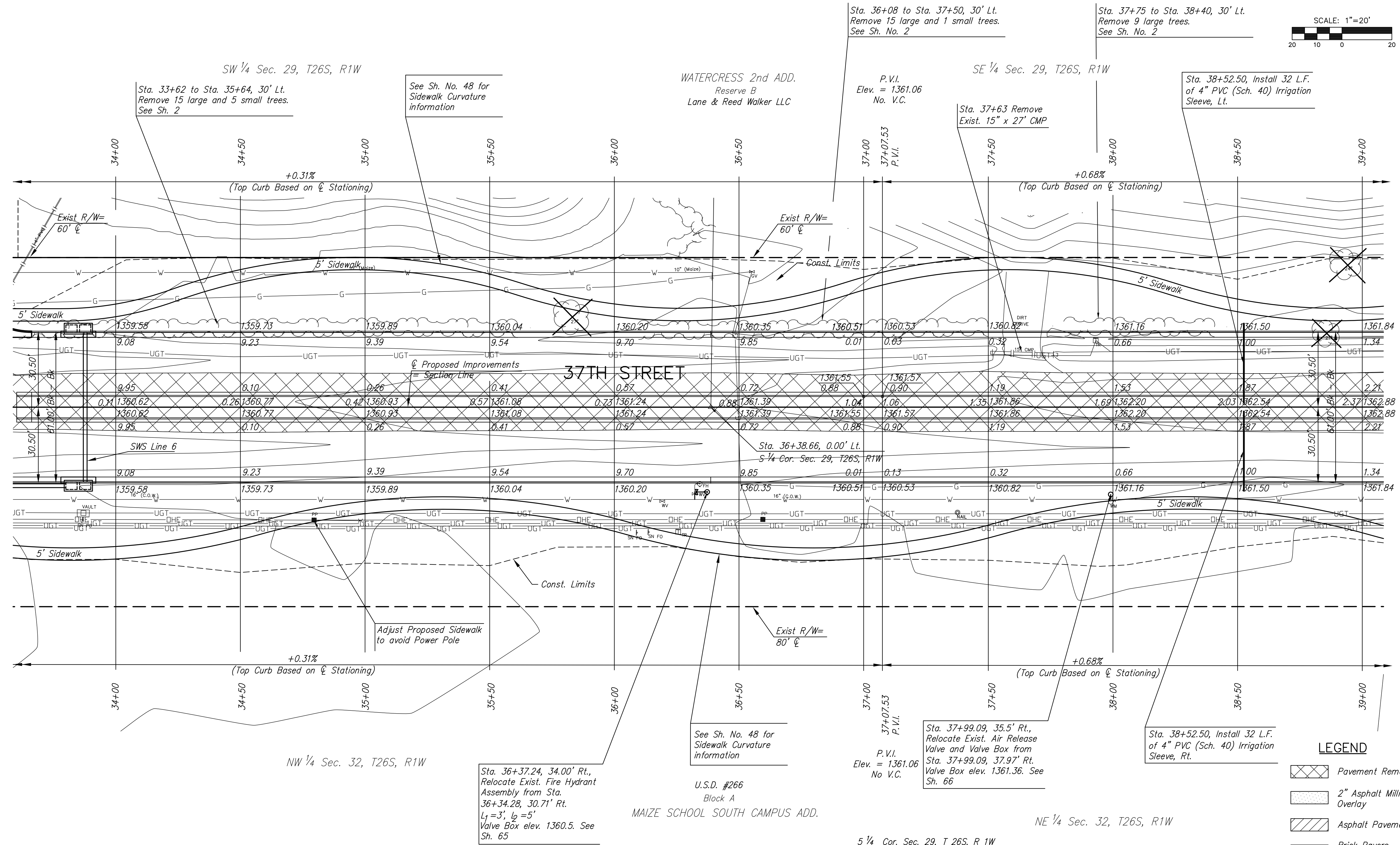
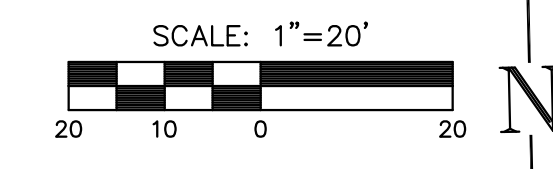


P.I. Sta. 36+38.66=S 1/4 Cor. Sec. 29, T26W, R1W
1. Found Sedgwick County Survey disk cast in concrete
2. N1709369.6536, E1615003.4890



**37TH STREET IMPROVEMENTS
FROM
MAIZE ROAD TO TYLER ROAD**

**PLAN SHEET
STA 34+0.00
TO
STA 39+0.00**
SHEET TITLE
472-84693
PROJECT NUMBER

DESIGN BY
DRAWN BY
CHECKED BY

ISSUED
March 24, 2009
REVISED

SHEET NO.
11 of 133

- LEGEND**
- Pavement Removal
 - 2" Asphalt Milling & Overlay
 - Asphalt Pavement Widening
 - Brick Pavers
 - Construct Wheelchair Ramp See Sh. No. 49
 - Tree Removal

UTILITY ADJUSTMENTS				
STATION	OFFSET	EXISTING ELEVATION	PROPOSED ELEVATION	REMARKS
36+19.21	37.7' Rt.	1362.06	1360.41	Water Valve Box

PLOTTED: Tuesday, March 24, 2009 @ 01:47PM

J:\Civil\08137.DWG\PAV\08137-E7