

**37TH STREET IMPROVEMENTS  
FROM  
MAIZE ROAD TO TYLER ROAD**

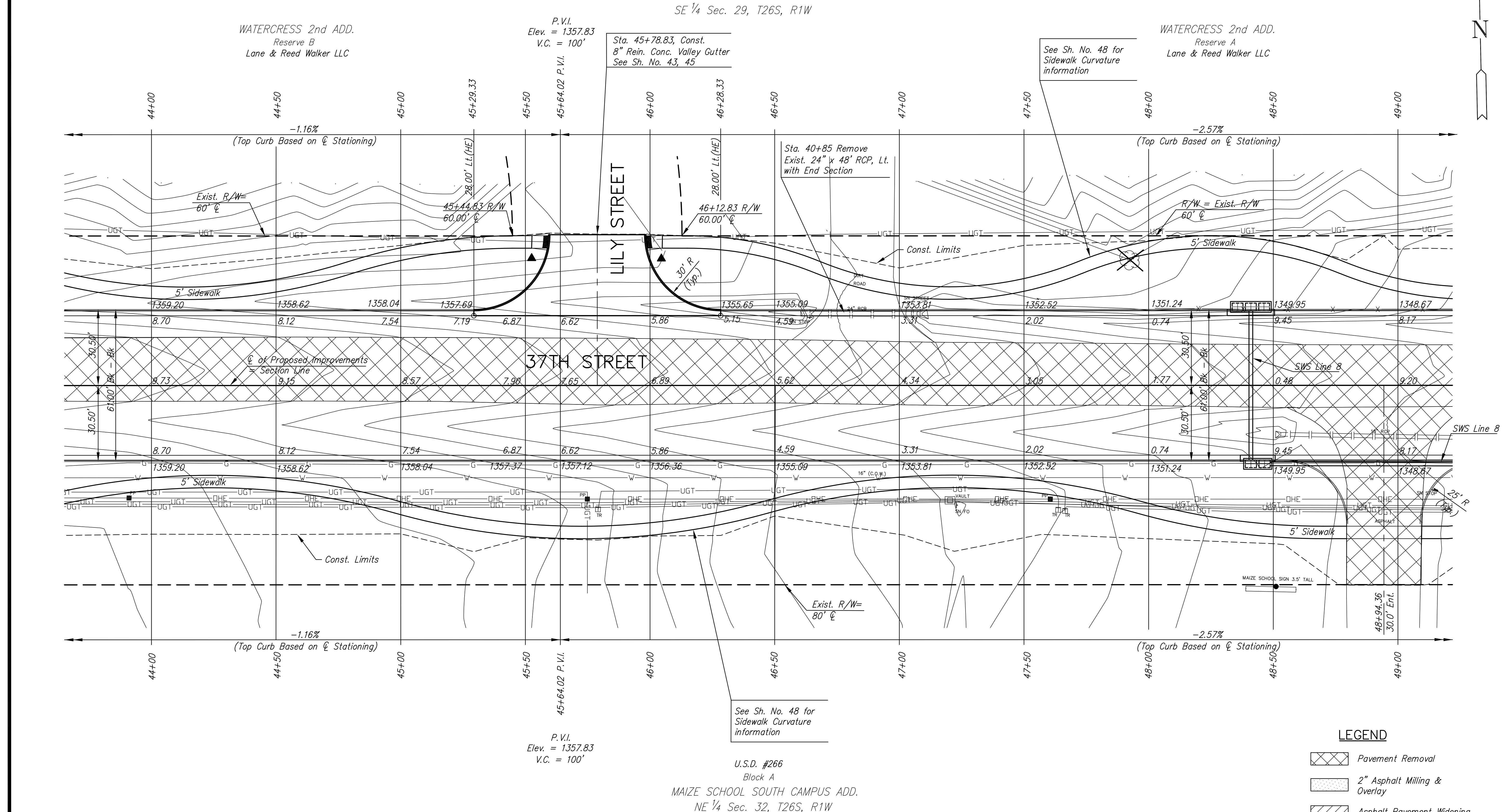
**PLAN SHEET  
STA. 44+0.00  
TO  
STA. 49+0.00**  
SHEET TITLE  
**472-84693**  
PROJECT NUMBER

DESIGN BY  
DRAWN BY  
CHECKED BY

ISSUED  
**March 24, 2009**  
REVISED

SHEET NO.  
**13 of 133**

J:\Civil\08137\DWG\PAV\08137-E9



WATERCRESS 2nd ADD.  
Reserve B  
Lane & Reed Walker LLC

P.V.I.  
Elev. = 1357.83  
V.C. = 100'

Sta. 45+78.83, Const.  
8" Rein. Conc. Valley Gutter  
See Sh. No. 43, 45

See Sh. No. 48 for  
Sidewalk Curvature  
information

WATERCRESS 2nd ADD.  
Reserve A  
Lane & Reed Walker LLC

Sta. 40+85 Remove  
Exist. 24" x 48" RCP, Lt.  
with End Section

See Sh. No. 48 for  
Sidewalk Curvature  
information

U.S.D. #266  
Block A  
MAIZE SCHOOL SOUTH CAMPUS ADD.  
NE 1/4 Sec. 32, T26S, R1W

P.V.I.  
Elev. = 1357.83  
V.C. = 100'

PLOTTED: Tuesday, March 24, 2009 @ 01:48PM