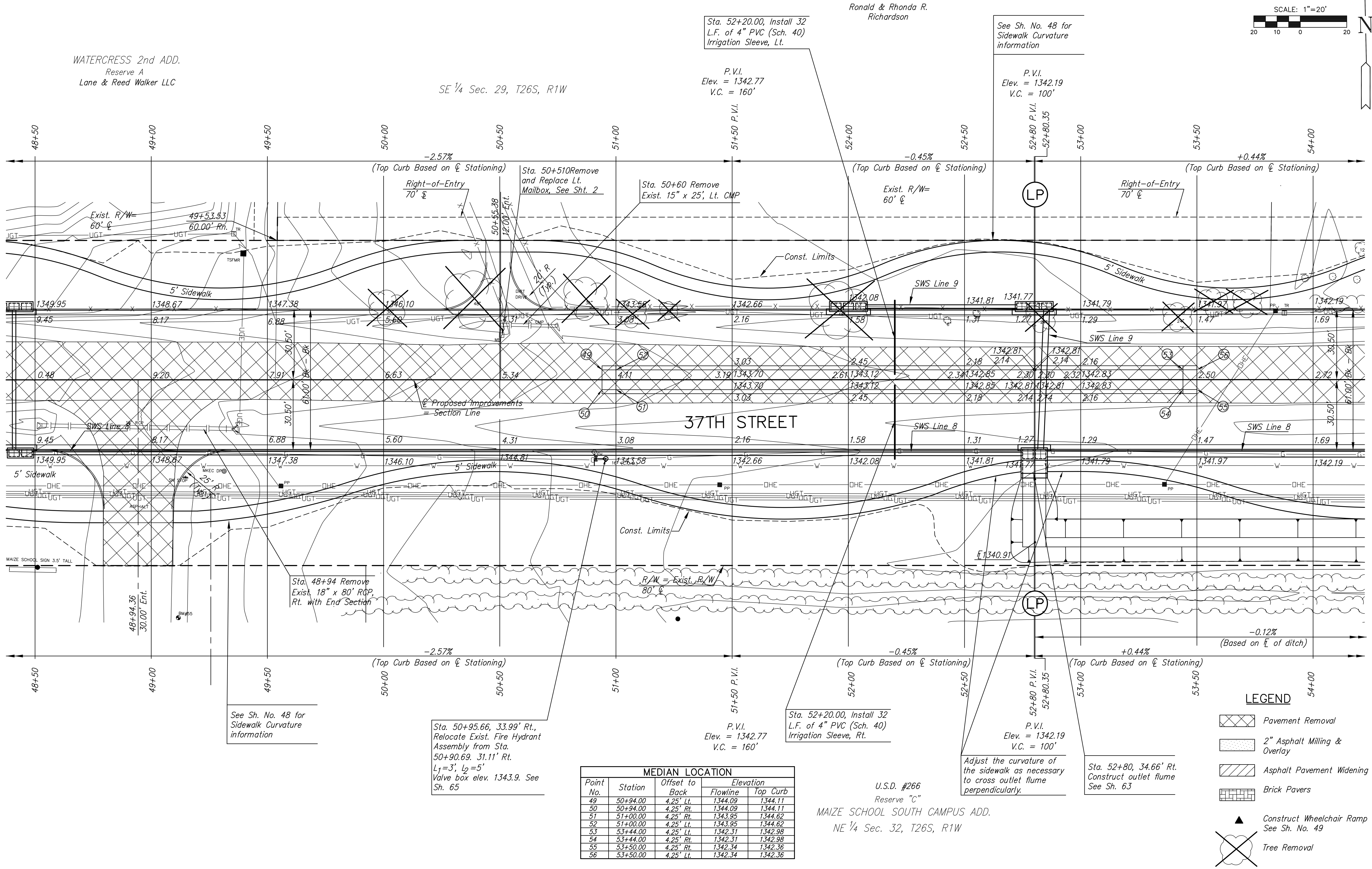


**37TH STREET IMPROVEMENTS
FROM
MAIZE ROAD TO TYLER ROAD**

WATERGROSS 2nd ADD.
Reserve A
Lane & Reed Walker LLC

SE 1/4 Sec. 29, T26S, R1W



LEGEND

- Pavement Removal
- 2" Asphalt Milling & Overlay
- Asphalt Pavement Widening
- Brick Pavers
- Construct Wheelchair Ramp See Sh. No. 49
- Tree Removal

Point No.	Station	Offset to Back	Elevation	
			Flowline	Top Curb
49	50+94.00	4.25' Lt.	1344.09	1344.11
50	50+94.00	4.25' Rt.	1344.09	1344.11
51	51+00.00	4.25' Rt.	1343.95	1344.82
52	51+00.00	4.25' Lt.	1343.95	1344.62
53	53+44.00	4.25' Lt.	1342.31	1342.98
54	53+44.00	4.25' Rt.	1342.31	1342.98
55	53+50.00	4.25' Rt.	1342.34	1342.36
56	53+50.00	4.25' Lt.	1342.34	1342.36

U.S.D. #266
Reserve "C"
MAIZE SCHOOL SOUTH CAMPUS ADD.
NE 1/4 Sec. 32, T26S, R1W

See Sh. No. 48 for
Sidewalk Curvature
information

Sta. 50+95.66, 33.99' Rt.,
Relocate Exist. Fire Hydrant
Assembly from Sta.
50+90.69. 31.11' Rt.
L₁=3'; L₂=5'
Valve box elev. 1343.9. See
Sh. 65

Sta. 52+20.00, Install 32
L.F. of 4" PVC (Sch. 40)
Irrigation Sleeve, Rt.

Adjust the curvature of
the sidewalk as necessary
to cross outlet flume
perpendicularly.

Sta. 52+80, 34.66' Rt.
Construct outlet flume
See Sh. 63

PLAN SHEET
STA. 49+0.00
TO
STA. 54+0.00
SHEET TITLE
472-84693
PROJECT NUMBER

DESIGN BY
DRAWN BY
CHECKED BY

ISSUED
March 24, 2009
REVISED

SHEET NO.
14 of 133