

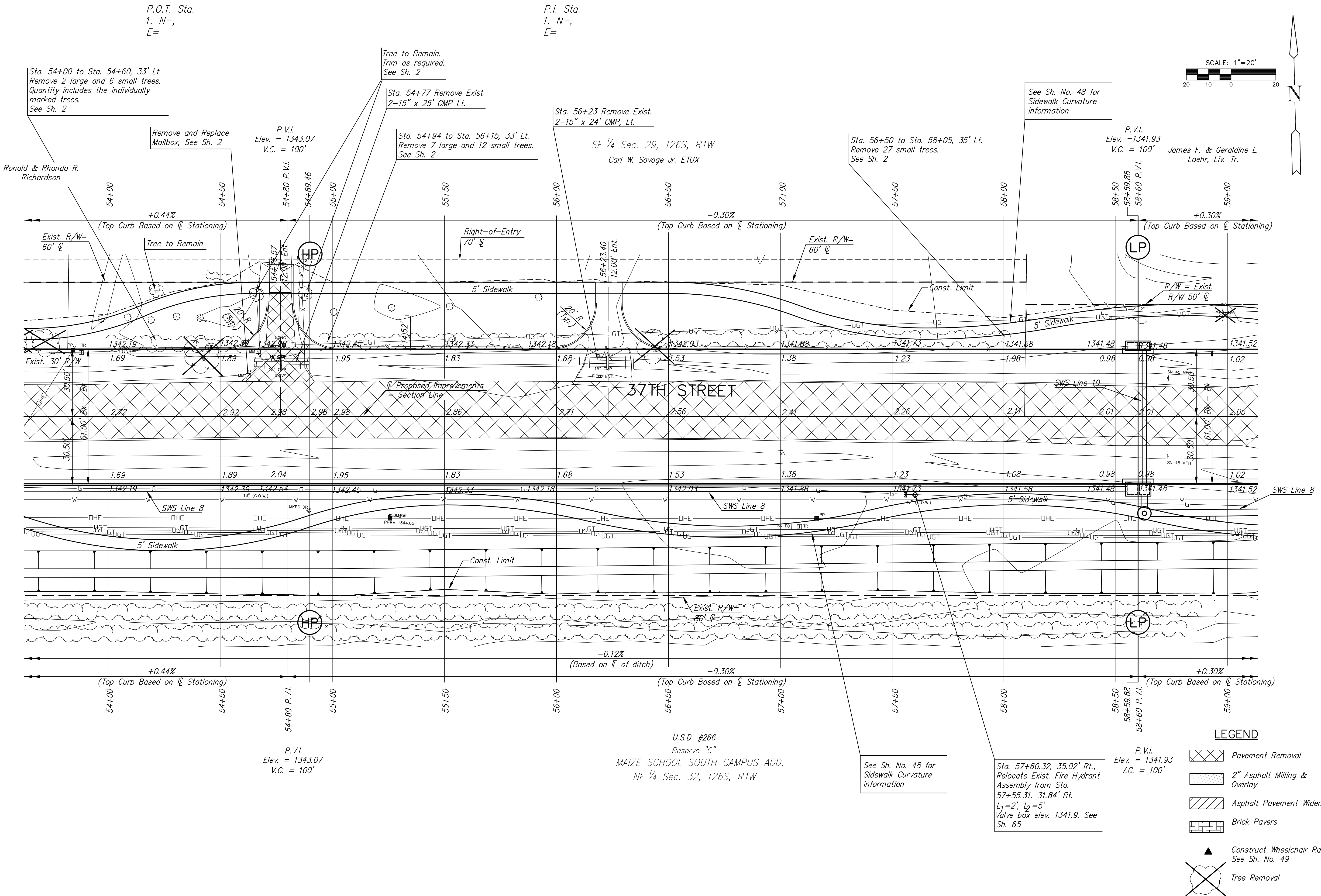
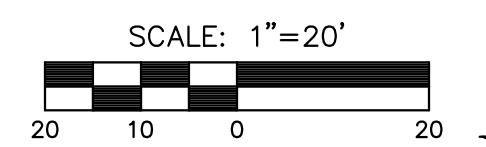
**37TH STREET IMPROVEMENTS  
FROM  
MAIZE ROAD TO TYLER ROAD**

**PLAN SHEET  
STA 54+0.00  
TO  
STA 59+0.00**  
SHEET TITLE  
472-84693  
PROJECT NUMBER

DESIGN BY  
DRAWN BY  
CHECKED BY

ISSUED  
**March 24, 2009**  
REVISED

SHEET NO.  
**15 of 133**



**LEGEND**

- Pavement Removal
- 2" Asphalt Milling & Overlay
- Asphalt Pavement Widening
- Brick Pavers
- Construct Wheelchair Ramp See Sh. No. 49
- Tree Removal

PLOTTED: Tuesday, March 24, 2009 9:01:48 AM

J:\Civil\08137.DWG\PAV\08137-E11