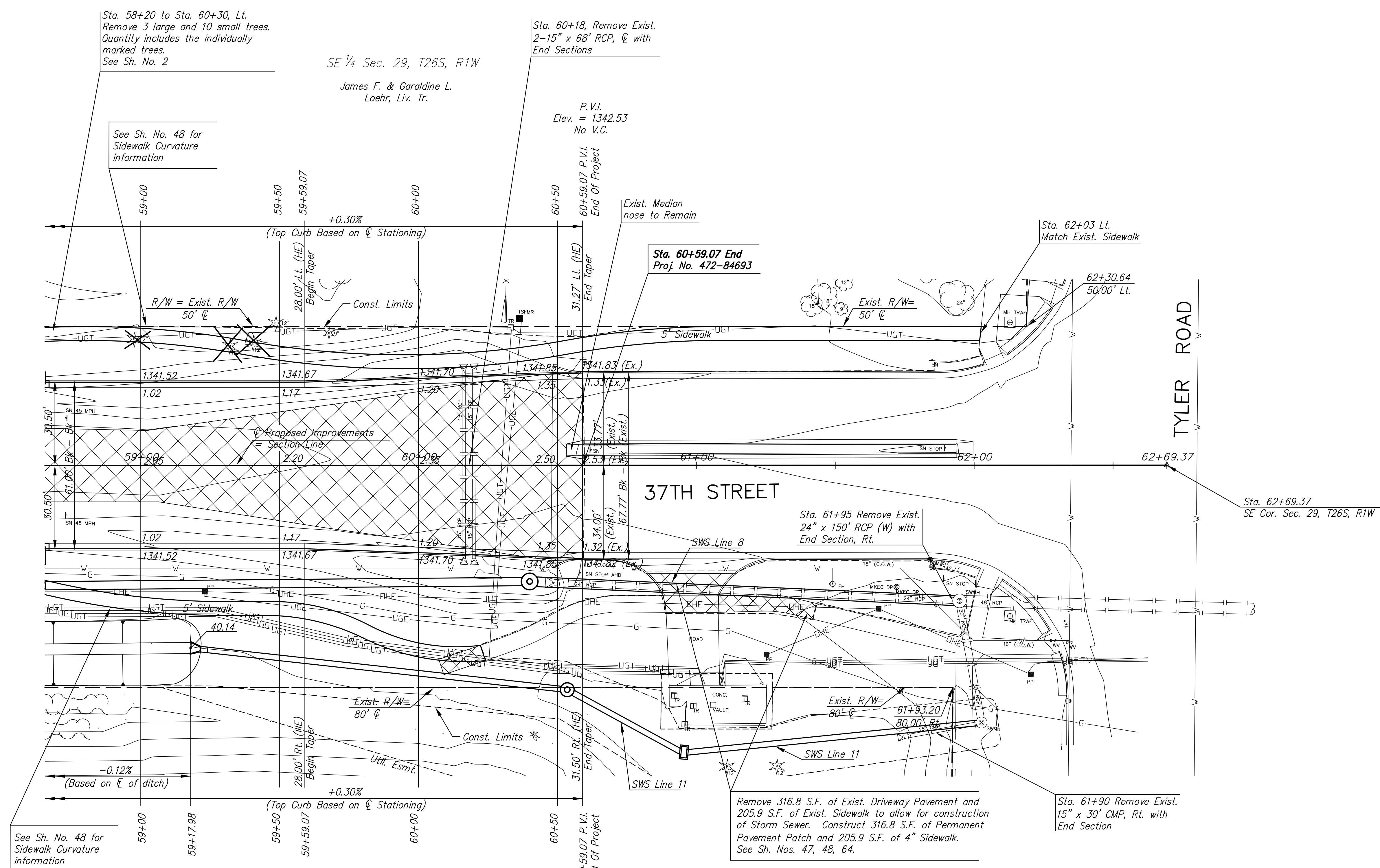


**37TH STREET IMPROVEMENTS
FROM
MAIZE ROAD TO TYLER ROAD**

P.I. Sta. 62+69.37=SE Cor. Sec. 29, T26S, R1W
1. Found 3/8" Spike in Thimble
2. N1709450.4800, E1617632.9642



See Sh. No. 48 for
Sidewalk Curvature
information

Sta. 58+20 to Sta. 60+30, Lt.
Remove 3 large and 10 small trees.
Quantity includes the individually
marked trees.
See Sh. No. 2

SE 1/4 Sec. 29, T26S, R1W
James F. & Geraldine L.
Loehr, Liv. Tr.

Sta. 60+18, Remove Exist.
2-15" x 68' RCP, ϕ with
End Sections

P.V.I.
Elev. = 1342.53
No V.C.

60+59.07 P.V.I.
End Of Project

Exist. Median
nose to Remain

Sta. 60+59.07 End
Proj. No. 472-84693

Sta. 62+03 Lt.
Match Exist. Sidewalk

62+30.64
50'00" Lt.

37TH STREET

Sta. 61+95 Remove Exist.
24" x 150' RCP (W) with
End Section, Rt.

Sta. 62+69.37
SE Cor. Sec. 29, T26S, R1W

Remove 316.8 S.F. of Exist. Driveway Pavement and
205.9 S.F. of Exist. Sidewalk to allow for construction
of Storm Sewer. Construct 316.8 S.F. of Permanent
Pavement Patch and 205.9 S.F. of 4" Sidewalk.
See Sh. Nos. 47, 48, 64.

Sta. 61+90 Remove Exist.
15" x 30' CMP, Rt. with
End Section

U.S.D. #266
Reserve "C"
MAIZE SCHOOL SOUTH CAMPUS ADD.
NE 1/4 Sec. 32, T26S, R1W

P.V.I.
Elev. = 1342.53
No V.C.

- SE Cor. Sec. 29, T 26S, R 1W
1. Found 3/8" Spike in thimble
 2. Sta. 62+69.37, 0.00 Lt.
 3. N1709450.4800, E1617632.9642
 4. "+" cut in median 77.05' S
 5. "+" cut in median 74.59' W
 6. "+" cut in median 74.32' N

LEGEND

- Pavement Removal
- 2" Asphalt Milling & Overlay
- Asphalt Pavement Widening
- Brick Pavers
- Construct Wheelchair Ramp
See Sh. No. 49
- Tree Removal

**PLAN SHEET
STA. 59+0.00
TO
STA. 62+69.37**
SHEET TITLE
472-84693
PROJECT NUMBER

DESIGN BY
DRAWN BY
CHECKED BY

ISSUED
March 24, 2009
REVISED

SHEET NO.
16 of 133