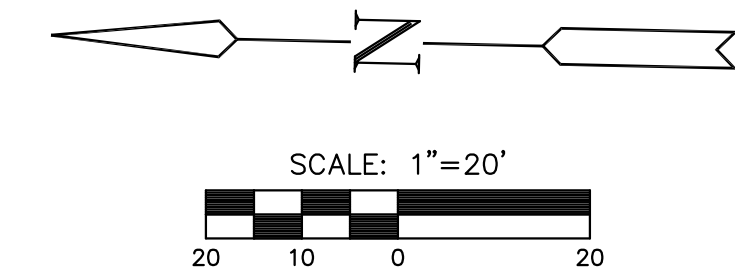


P.O.T. Sta. 45+00.00
 1. Not Set
 2. N1709788.9195, E1612355.1327

P.I. Sta. 50+00.00=SW Cor. Sec. 29, T26S, R1W
 1. Found 1/2" rebar with Moehring cap
 2. N1709289.0390, E1612366.0703

SW 1/4 Sec. 29, T26S, R1W
 WYN-WOOD ADD.

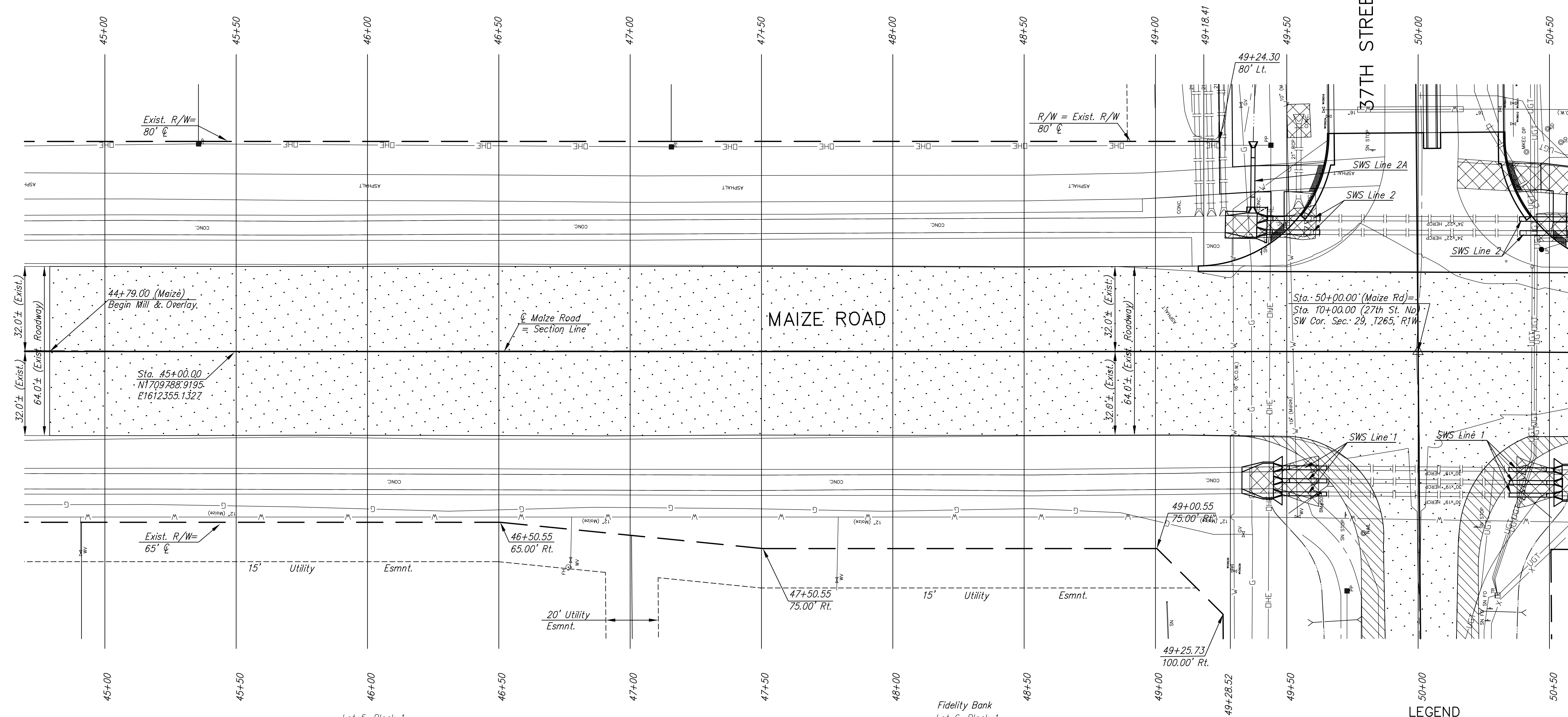


MKEC
 ENGINEERING
 CONSULTANTS, INC.
 411 N. WEBB ROAD
 WICHITA, K.S. 67206
 316-684-9600

Lot 3, Block 5

Lot 4, Block 5

Lot 5, Block 5
 Jack W. Miller, DDS P.A.



Lot 5, Block 1

Fidelity Bank
 Lot 6, Block 1

HAMPTON SQUARE ADD.
 SE 1/4 Sec. 30, T26S, R1W

- SW Cor. Sec. 29, T 26S, R 1W
1. Found 1/2" rebar with Moehring cap
 2. Sta. 50+00.00, 0.00' Lt.
 3. N1709289.0390, E1612366.0703
 4. Chiseled "+" on center RCP 64.31' SE
 5. Chiseled "+" on center RCP 63.32' NE
 6. Chiseled "+" in concrete E. side RCP 56.86' NW

LEGEND

- Pavement Removal
- 2" Asphalt Milling & Overlay
- Asphalt Pavement Widening
- Brick Pavers
- Construct Wheelchair Ramp See Sh. No. 49

**37TH STREET IMPROVEMENTS
 FROM
 MAIZE ROAD TO TYLER ROAD**

**PLAN SHEET
 MAIZE ROAD
 STA. 44+79 TO
 STA. 50+50**
 SHEET TITLE
 472-84693
 PROJECT NUMBER

DESIGN BY
 DRAWN BY
 CHECKED BY

ISSUED
 March 24, 2009
 REVISED

SHEET NO.
 17 of 133

PLOTED: Tuesday, March 24, 2009 @ 01:48PM

J:\Giv\08137.DWG\PAV\08137-E13