

**37TH STREET IMPROVEMENTS
FROM
MAIZE ROAD TO TYLER ROAD**

**PLAN SHEET
MAIZE ROAD
STA. 50+50 TO
STA. 56+00**

472-84693
PROJECT NUMBER

DESIGN BY
DRAWN BY
CHECKED BY

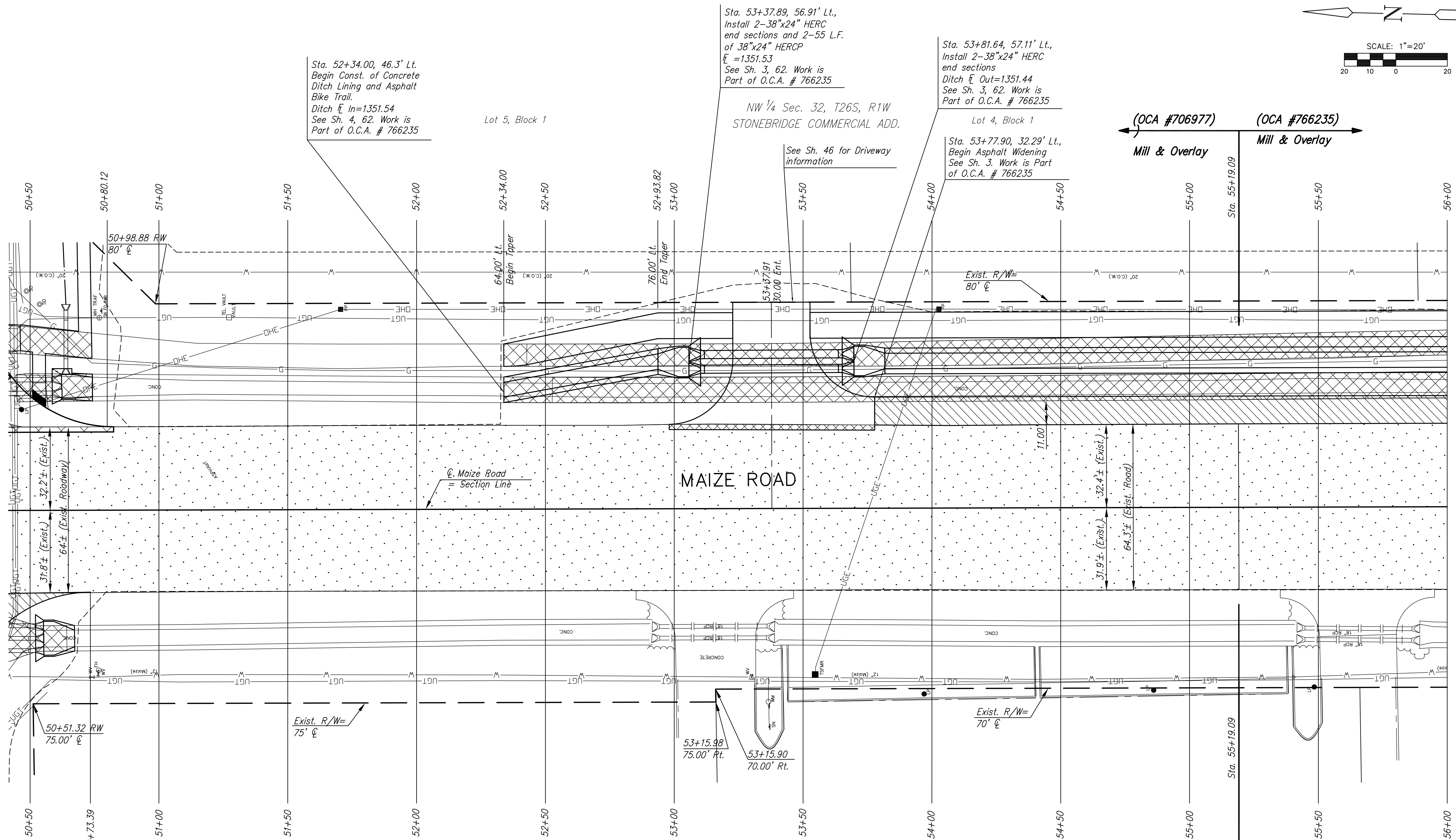
ISSUED
March 24, 2009

REVISED

SHEET NO.

18 of 133

J:\Civil\08137\DWG\PAV\08137-E14



Sta. 52+34.00, 46.3' Lt.
Begin Const. of Concrete
Ditch Lining and Asphalt
Bike Trail.
Ditch $\bar{L} = 1351.54$
See Sh. 4, 62. Work is
Part of O.C.A. # 766235

Sta. 53+37.89, 56.91' Lt.,
Install 2-38"x24" HERC
end sections and 2-55 L.F.
of 38"x24" HERCP
 $\bar{L} = 1351.53$
See Sh. 3, 62. Work is
Part of O.C.A. # 766235

Sta. 53+81.64, 57.11' Lt.,
Install 2-38"x24" HERC
end sections
Ditch $\bar{L} = 1351.44$
See Sh. 3, 62. Work is
Part of O.C.A. # 766235

Dana c. & Jennifer L. Wadley
Lot 1, Block 1

WADLEY RANCH ADD.
NE 1/4 Sec. 31, T26S, R1W

Goodwill Industry Easter
Seals of Kansas
Lot 2, Block 1

(OCA #706977) (OCA #766235)
Mill & Overlay Mill & Overlay

- LEGEND**
- Pavement Removal
 - 2" Asphalt Milling & Overlay
 - Asphalt Pavement Widening
 - Brick Pavers
See Sh. No. xx
 - Construct Wheelchair Ramp
See Sht. No. 49

PLOTTED: Tuesday, March 24, 2009 @ 01:48PM