

INDEX OF SHEETS

SHEET NO	DESCRIPTION
1	TITLE SHEET
2	GENERAL NOTES
3-4	TYPICAL SECTIONS
5-19	PAVING PLANS
20-24	PAVING BUBBLE MAPS
25-35	STORM SEWER PLAN & PROFILES
36-40	STORM SEWER BUBBLE MAPS
41-50	PAVING DETAILS
51-63	STORM SEWER DETAILS
64	MISCELLANEOUS DETAILS
65-66	WATER SYSTEM DETAILS
67-68	SUMMARY OF QUANTITIES
69-75	SOIL EROSION BMP
76-79	ROADSIDE IMPROVEMENT PLANS
80-84	TRAFFIC SIGNAL PLANS
85-90	PAVEMENT MARKING & SIGNING
91	CONSTRUCTION SEQUENCING
92-99	TRAFFIC CONTROL PLANS
100-133	CROSS SECTIONS

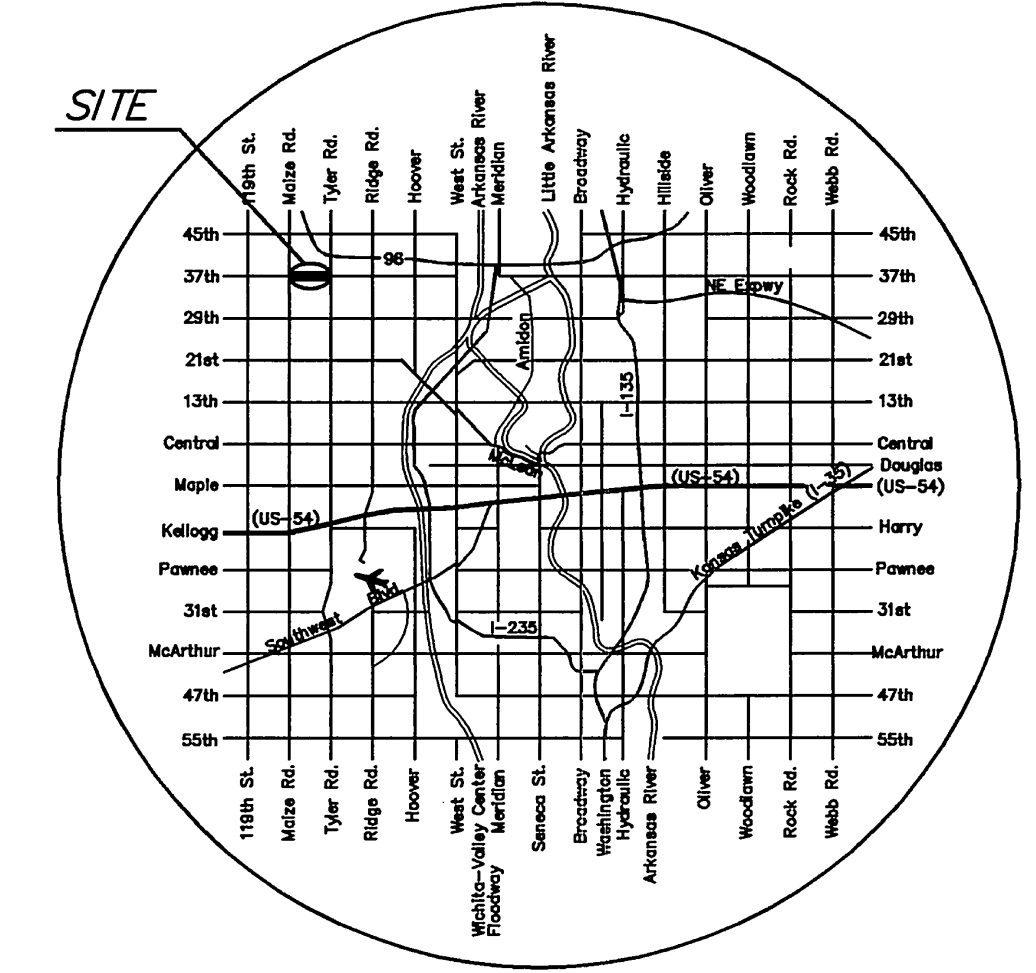
# STREET IMPROVEMENTS FOR 37TH STREET NORTH FROM MAIZE ROAD TO TYLER ROAD

CITY OF WICHITA  
SEDGWICK COUNTY, KANSAS

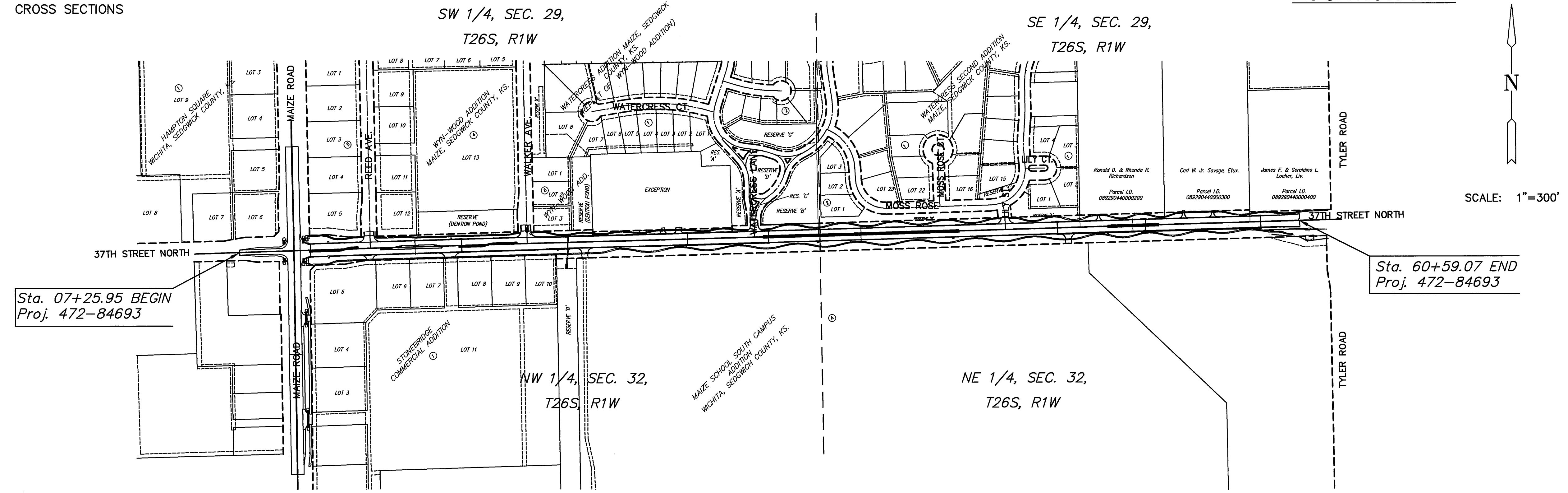
CITY OF WICHITA PAVING PROJECT NO. 472-84693 (OCA # 706977)

MAIZE ROAD TURN LANE IMPROVEMENT PROJECT NO. 472-84787 (OCA # 766235)

JAMES L. ARMOUR, P.E. - CITY ENGINEER



LOCATION MAP



**BENCHMARKS**

- BM#50 Sq. Cut in top west 18" RCP north end, Northwest corner Maize Rd. and 37th St. N.  
Sta. 9+46.10, 38.11' Lt. Elev. 1354.15
- BM#51 Sq. Cut S.E. cor. conc. slab at CMP north to pond between 4th & 5th PP east of Maize Rd., north side of 37th St. N.  
Sta. 17+82.78, 40.78' Lt. Elev. 1352.71
- BM#52 RR Spike N. face first PP east of Maize Road and south of 37th St. N.  
Sta. 23+95.69, 45.44' Rt. Elev. 1356.08
- BM#53 Sq. Cut on top of curb west side Watercress Lane, north side of 37th St. N.  
Sta. 32+97.13, 39.13' Lt. Elev. 1360.29
- BM#54 Step spike in 4th PP west of entrance to Maize Middle School  
Sta. 42+07.52, 43.98' Rt. Elev. 1364.07
- BM#55 Sq. Cut in top L.P. base south of 37th St. N. at entrance to Maize Middle School  
Sta. 49+11.66, 102.46' Rt. Elev. 1351.095
- BM#56 RR spike N. face of 4th PP west of entrance to Maize Middle School  
Sta. 55+25.67, 44.61' Rt. Elev. 1344.05
- BM#57 Sq. cut on top of curb, W. return, SW cor. intersection 37th St. N. and Tyler Rd.  
Sta. 61+84.25, 33.96' Rt. Elev. 1342.77

**HORIZONTAL CONTROL POINTS**

- SW Cor. Sec. 29, T26S, R1W N-1079289.04, E-1612366.07
- S1/4 Cor. Sec. 29, T26S, R1W N-1079369.65, E-1615003.49
- SE Cor. Sec. 29, T26S, R1W N-1709450.48, E-1617632.96



APPROVED - DATE

JIM ARMOUR, P.E.  
CITY ENGINEER  
PROJECT NO. 87 N-0307-01

**37TH STREET IMPROVEMENTS FROM MAIZE ROAD TO TYLER ROAD**

**TITLE SHEET**  
SHEET TITLE  
472-84693  
PROJECT NUMBER

DESIGN BY  
DRAWN BY  
CHECKED BY

ISSUED  
March 24, 2009  
REVISED

SHEET NO.  
1 of 133