

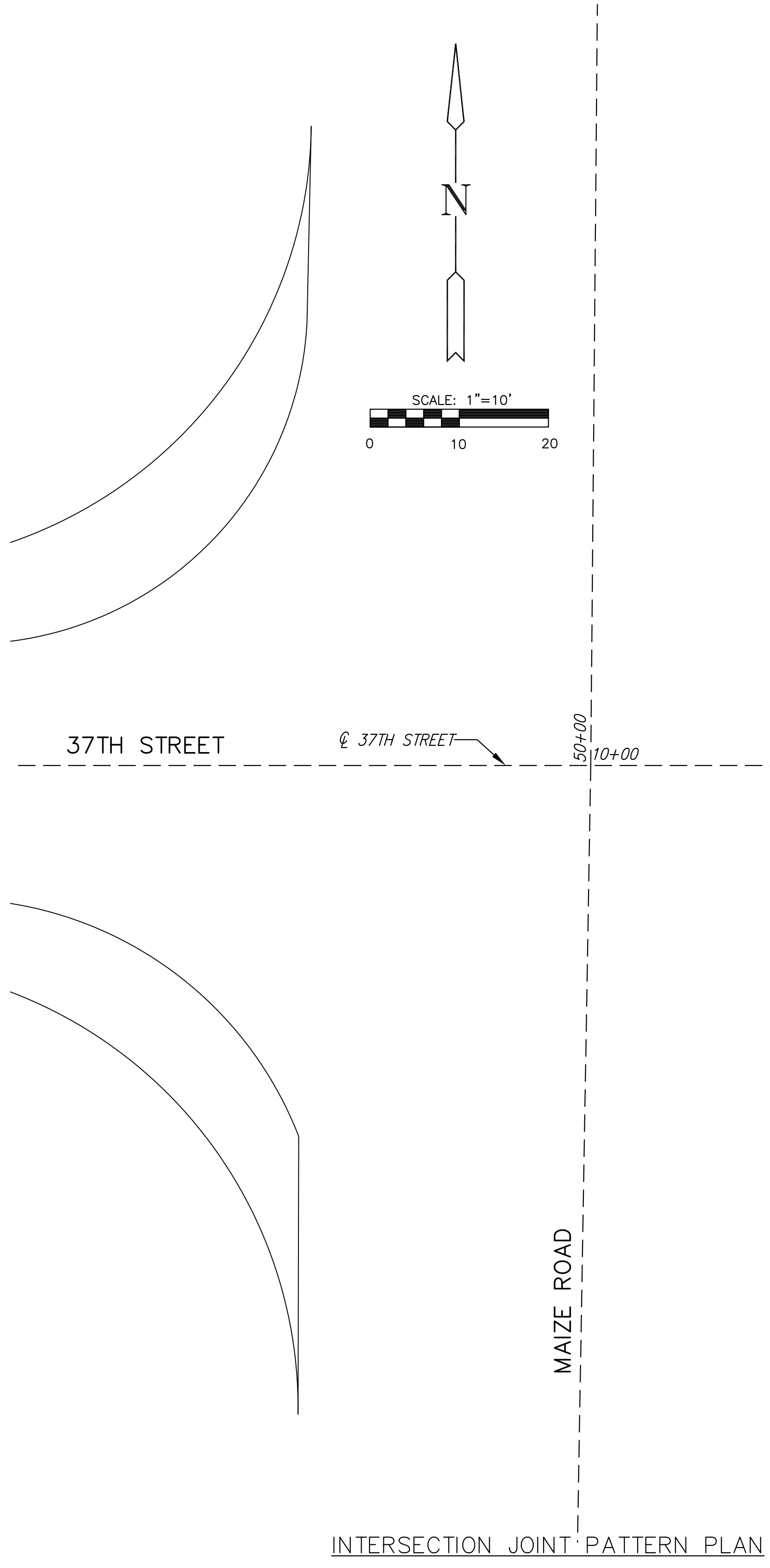
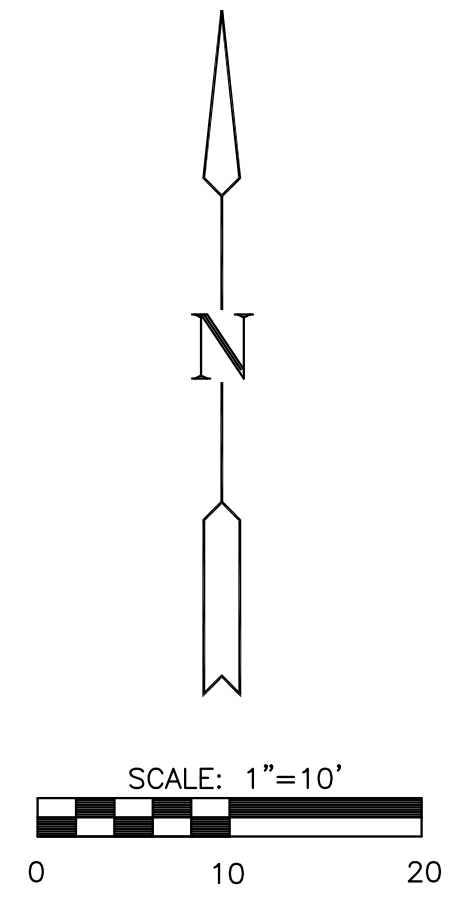
**37TH STREET IMPROVEMENTS
FROM
MAIZE ROAD TO TYLER ROAD**

**INTERSECTION
37TH STREET
AND
MAIZE ROAD**
SHEET TITLE
472-84693
PROJECT NUMBER

DESIGN BY
DRAWN BY
CHECKED BY

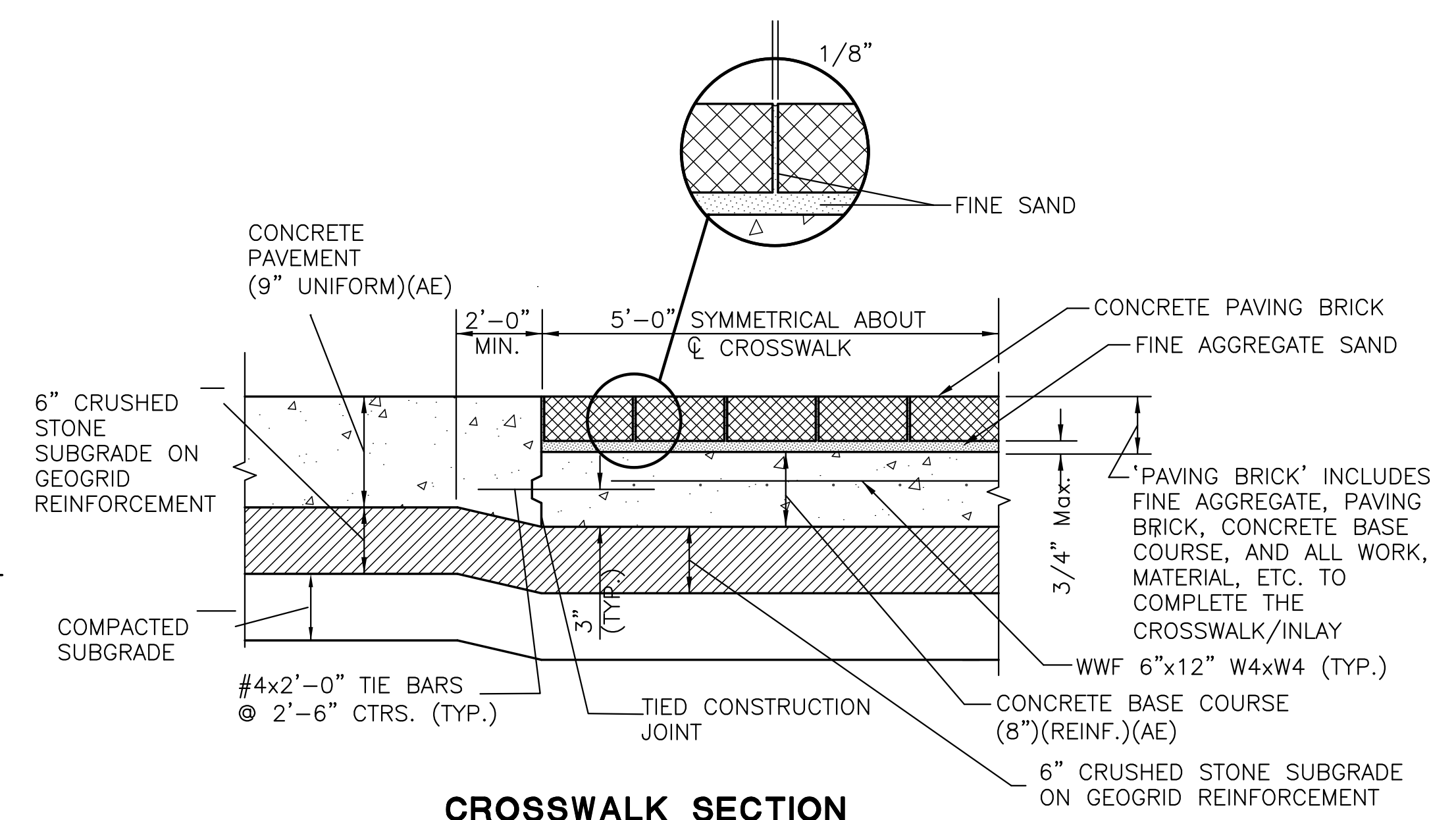
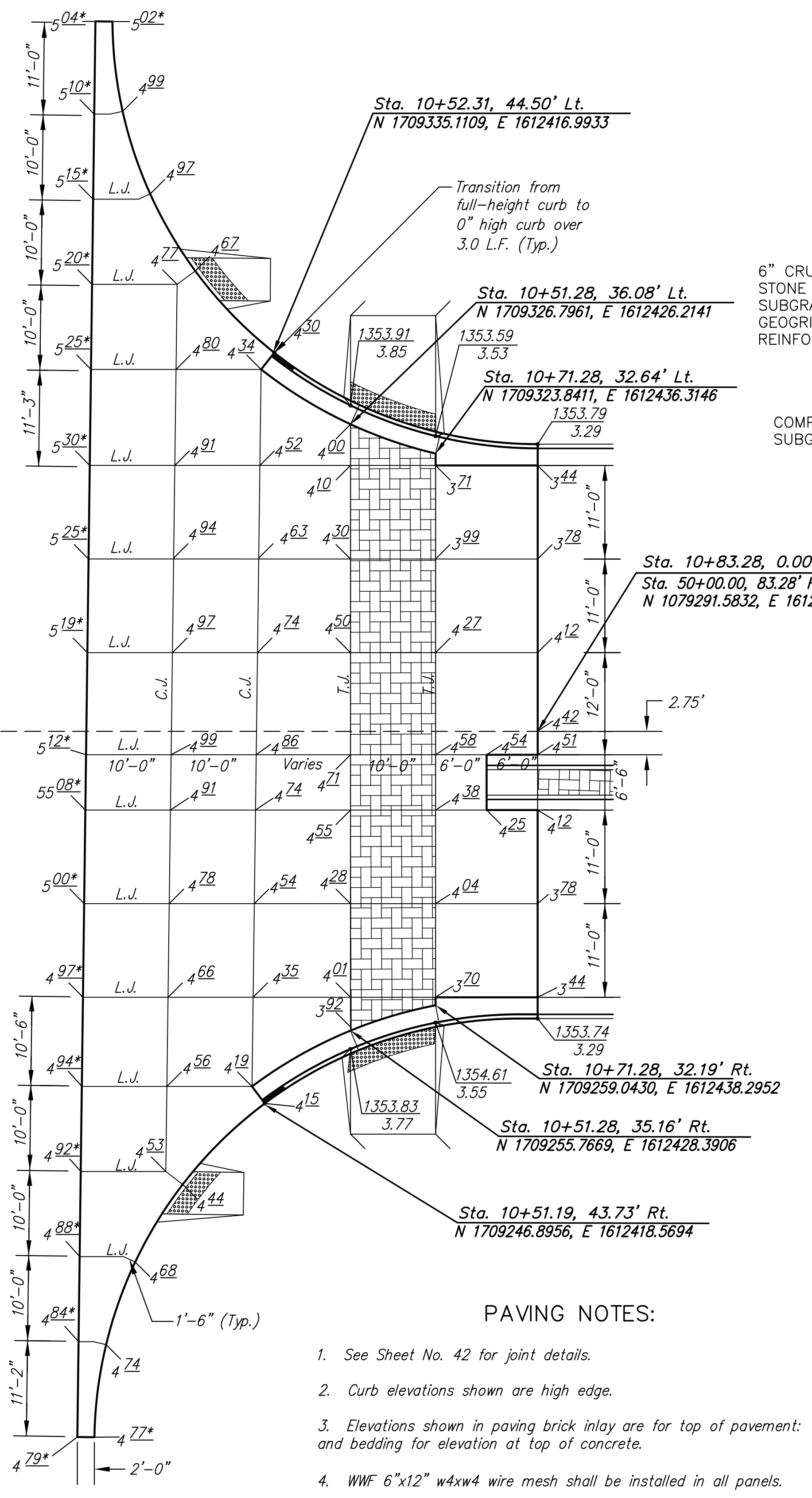
ISSUED
March 24, 2009
REVISED

SHEET NO.
41 of 133

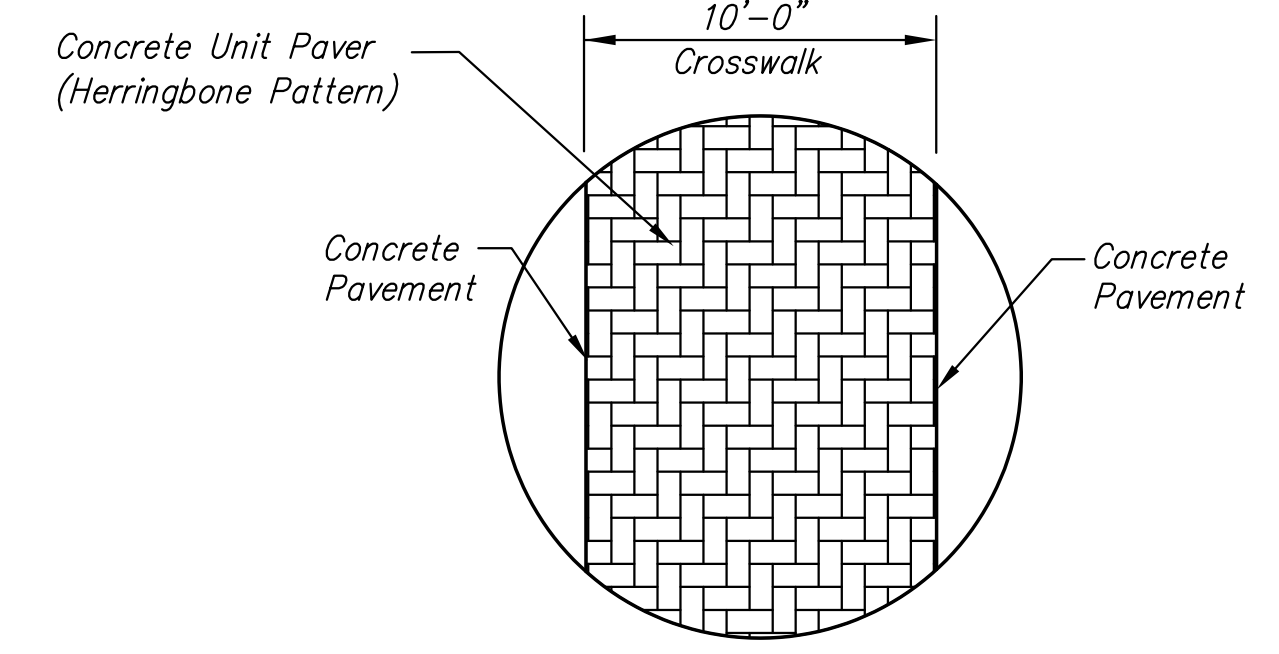


*Elevation at top of proposed asphalt overlay.
See Typical Sections.

| LEGEND | |
|--------|-------------------------|
| TJ | TIED CONSTRUCTION JOINT |
| LJ | LONGITUDINAL JOINT |
| CJ | CONTRACTION JOINT |



**CROSSWALK SECTION
(CONCRETE PAVEMENT)**



**PLAN-CROSSWALK
(CONCRETE PAVEMENT)**

CROSSWALK NOTES:

- Concrete unit pavers shall meet or exceed ASTM C 936. The style shall be "holland stone" (4"x8"x3 1/8") as manufactured by Pavestone, Inc., or equal as approved by the engineer. Color shall be "charcoal red" and laying pattern shall be herringbone. Payment shall be at the contract bid price per square foot for concrete unit pavers.
- 8 inch concrete pavement base course shall be subsidiary to the bid price for unit paver crosswalk.
- Sand bedding shall meet the specification requirements for fine aggregate. An uncompacted sand laying course shall be spread evenly over the area to be paved and then screeded to a level of approximately 3/4" max. thickness. Once screeded and leveled to the desired elevation, the sand laying course shall not be disturbed in any way.
- The paving brick shall be installed in a herringbone pattern as shown in the plan. Stones shall be placed with the chamfered side up, and joint spaces kept uniform approximately 1/8 inch thick. The gaps at the edge of the paved surface shall be filled with stones cut to fit. Cutting shall be accomplished to leave a clean edge toward the traffic surface, using a masonry saw. Whenever possible, no cuts should result with a paver less than one-third of its original dimension.
- Paving brick shall be vibrated to their final level in the sand laying course by two or three passes of a vibrating compactor capable of 3000 to 5000 pounds compaction force with the surface clean and joints open.
- After vibration, clean concrete sand shall be spread over the paving stone surface, allowed to dry, and vibrated into the joints with additional passes of the plate vibrator so as to completely fill the joints. A light coating of sand shall be swept over the completed surface and left to weather in.

PLOTTED: Tuesday, March 24, 2009 11:27AM

J:\Civil\08137.DWG\PAV_08137\Intersection