

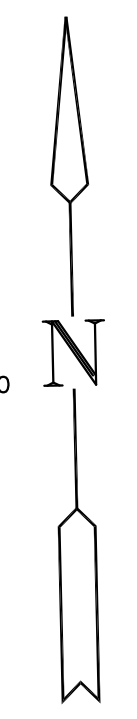
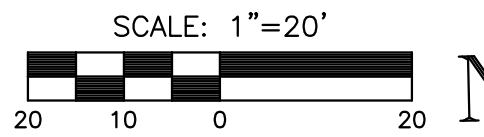
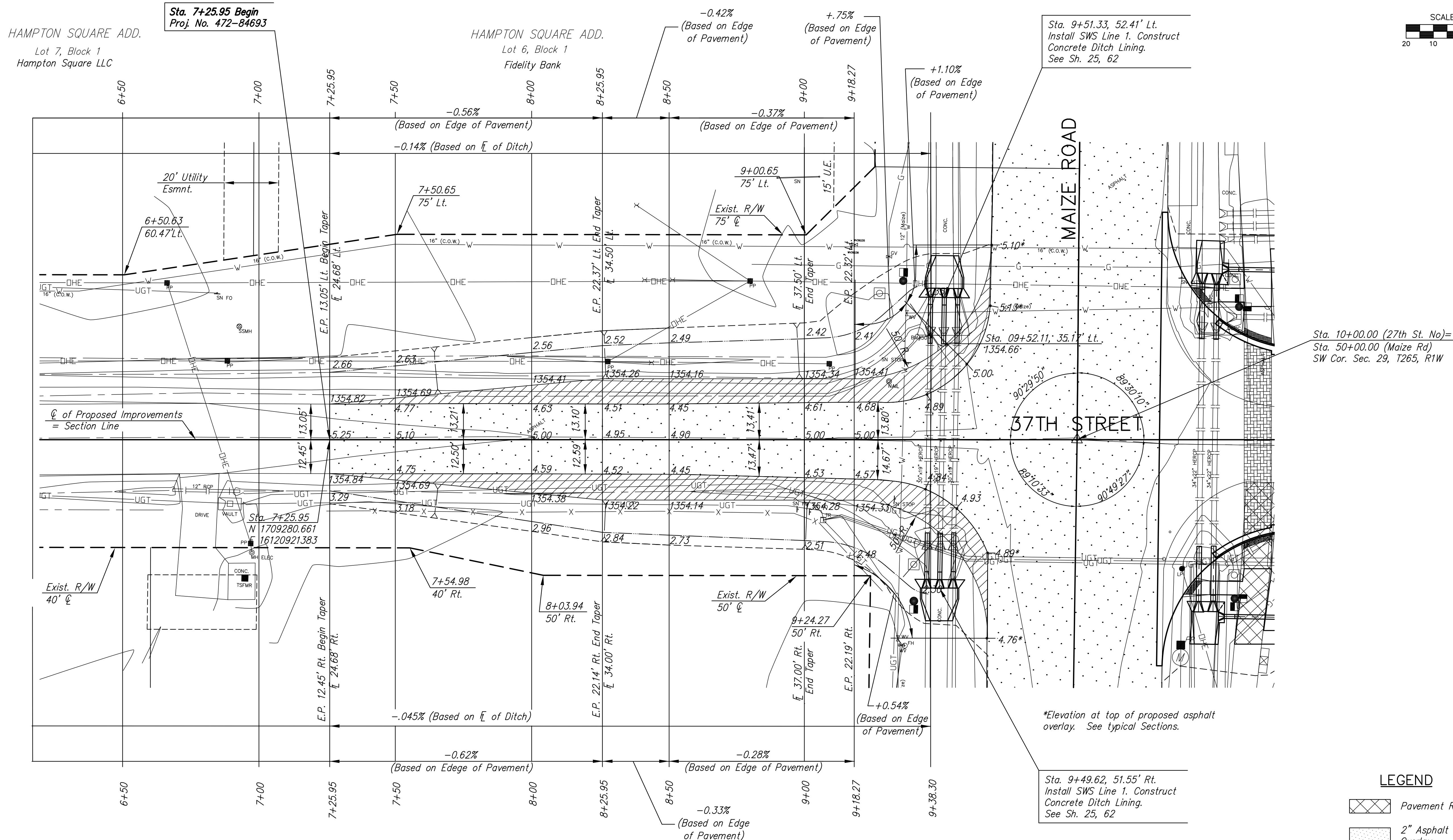
P.O.T. Sta. 7+25.95  
 1. NOT SET  
 2. N 1709280.6661, E 1612092.1383

P.I. Sta. 10+00.00 = SW COR. SEC. 29, T 26S, R1W  
 1. Found Moehring Cap  
 2. N 1709289.0390, E 1612366.0703

SE 1/4 Sec. 30, T26S, R1W

HAMPTON SQUARE ADD.  
 Lot 7, Block 1  
 Hampton Square LLC

HAMPTON SQUARE ADD.  
 Lot 6, Block 1  
 Fidelity Bank



**MKEC**  
 ENGINEERING  
 CONSULTANTS, INC.  
 411 N. WEBB ROAD  
 WICHITA, KS. 67206  
 316-684-9600

**37TH STREET IMPROVEMENTS  
 FROM  
 MAIZE ROAD TO TYLER ROAD**

**PLAN SHEET  
 STA 7+25.95  
 TO  
 STA 10+00.00**  
 SHEET TITLE  
 472-84693  
 PROJECT NUMBER

DESIGN BY  
 DRAWN BY  
 CHECKED BY

ISSUED  
 March 25, 2009  
 REVISED

SHEET NO.  
**5 of 133**

- LEGEND**
- Pavement Removal
  - 2" Asphalt Milling & Overlay
  - Asphalt Pavement Widening
  - Brick Pavers
  - Construct Wheelchair Ramp See Sh. No. 49
  - Tree Removal

\*Elevation at top of proposed asphalt overlay. See typical Sections.

Sta. 9+49.62, 51.55' Rt.  
 Install SWS Line 1. Construct Concrete Ditch Lining.  
 See Sh. 25, 62

- SW Cor. Sec. 29, T 26S, R 1W
1. Found 1/2" rebar with Moehring cap
  2. Sta. 10+00.00, 0.00' Lt.
  3. N1709289.0390, E1612366.0703
  4. Chiseled "+" on center RCP 64.31' SE
  5. Chiseled "+" on center RCP 63.32' NE
  6. Chiseled "+" in concrete E. side RCP 56.86' NW

Goodwill Industry Easter  
 Seals of Kansas  
 Lot 2, Block 1  
 WADLEY RANCH ADD.

NE 1/4 Sec. 31, T26S, R1W

Dana c. & Jennifer L. Wadley  
 Lot 1, Block 1  
 WADLEY RANCH ADD.

PLOTTED: Wednesday, March 25, 2009 @ 02:35PM

J:\Civil\08137\DWG\PAV\08137-E1