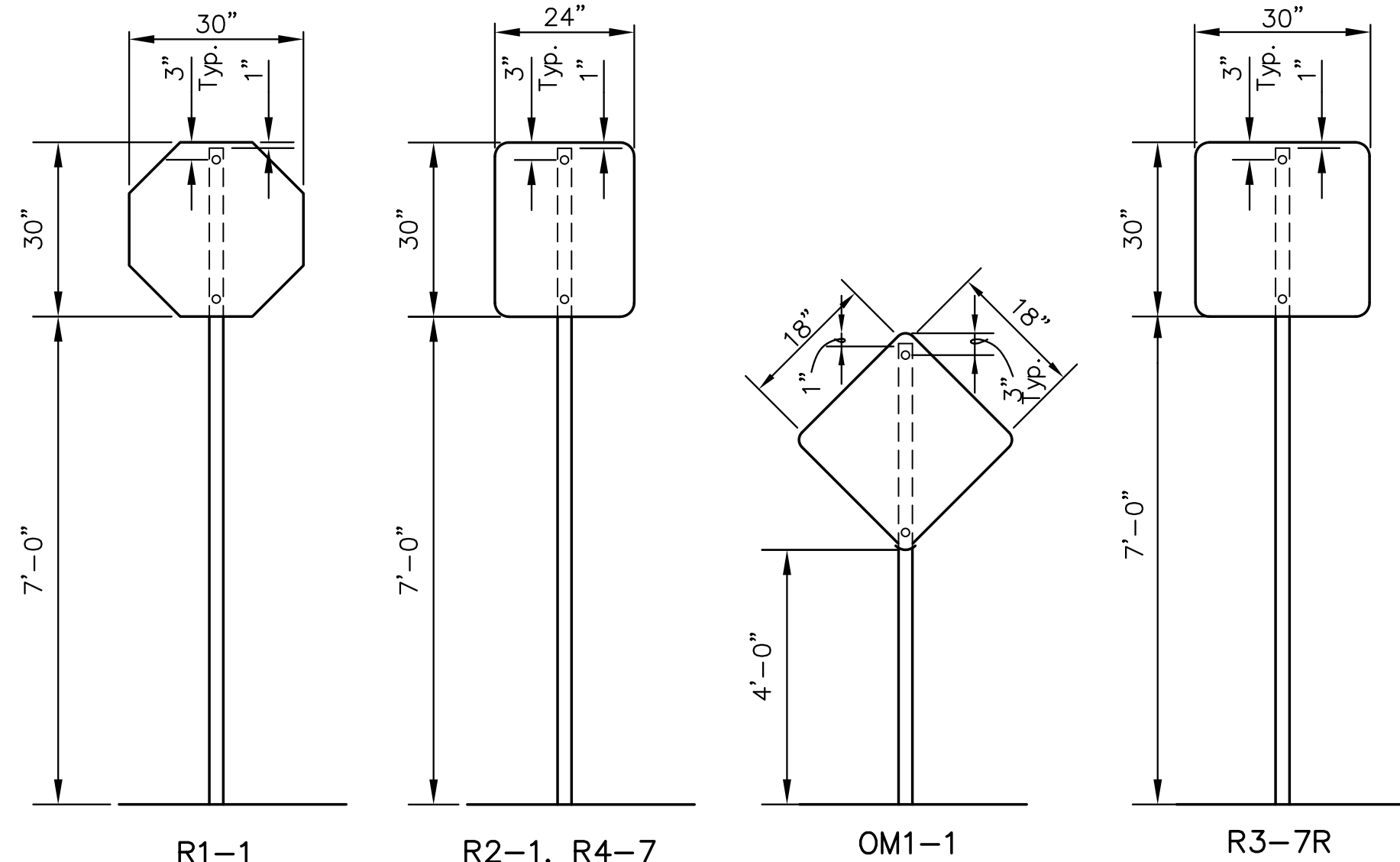


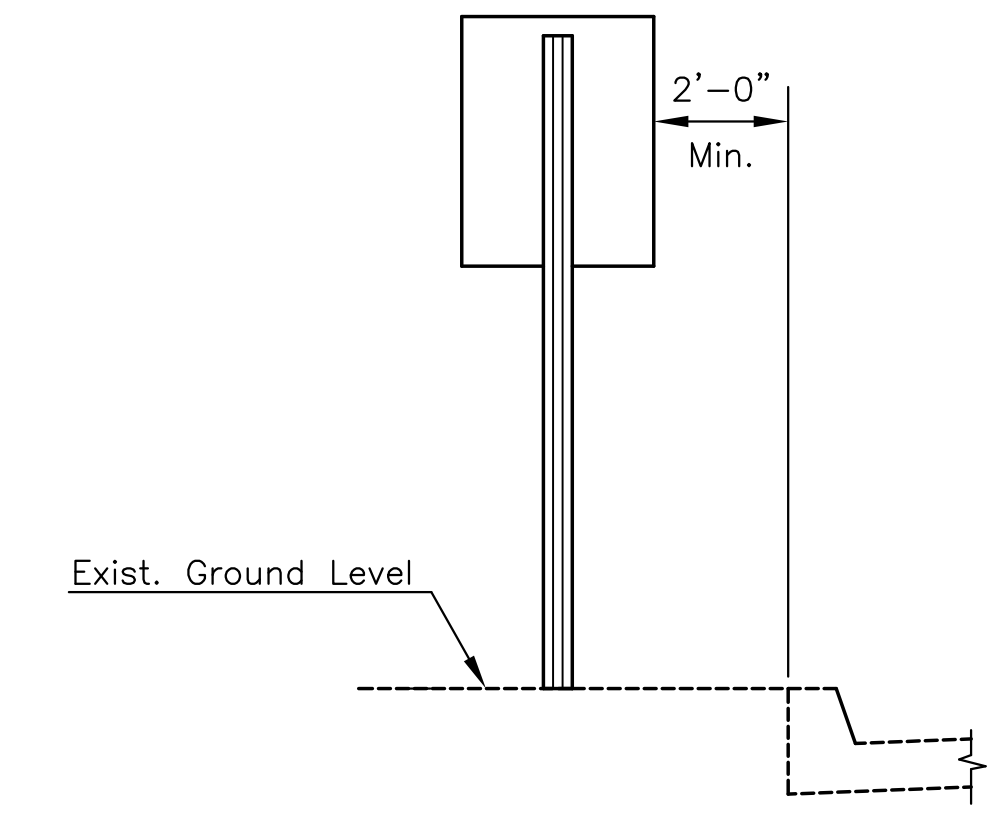
**37TH STREET IMPROVEMENTS  
FROM  
MAIZE ROAD TO TYLER ROAD**

**TRAFFIC CONTROL SIGNS & SIGN POST**

Station	Location from C	Classification - Each					Sign Post Length Breakaway 1-3/4"x1-3/4" Channel
		R1-1	R2-1	R3-7R	R4-7	OM1-1	
37th Street							
10+85.28	Rt.					1	7.00'
11+00	Lt.						10.5'
13+16	Lt.					1	7.00'
13+41	Lt.	1					10.5'
14+38	Rt.		1				10.5'
14+42.94	Rt.					1	7.00'
17+41.05	Rt.					1	7.00'
18+38.05	Rt.					1	7.00'
21+14.57	Lt.					1	7.00'
21+35	Lt.	1					10.5'
24+73	Lt.				1		10.5'
32+14	Lt.		1				10.5'
32+33	Rt.		1				10.5'
32+91	Lt.	1					10.5'
33+68.27						1	7.00'
43+37.33						1	7.00'
46+50	Lt.	1					10.5'
51+02						1	7.00'
53+42						1	7.00'
58+73	Rt.		1				10.5'
58+73	Lt.		1				10.5'
Maize Rd.							
54+00	Lt.			1			10.5'
59+25	Lt.			1			10.5'
TOTAL		4	5	3	1	10	



**SIGN MOUNTING DETAILS**



**SIGN INSTALLATION - CURBED STREET**

Note: If sign is to be installed adjacent to a non-curb street, adjustments may need to be made to sign height and location as directed by the engineer.

SIGN POST LENGTH SUMMARY	
BREAKAWAY SIGN POST:	
1 3/4"x1 3/4"x LENGTH	EACH
7.0'	10
10.5'	13
2-1/4"x2-1/4"x18"	23
2"x2"x36"	23
U-CHANNEL	
LENGTH	EACH
STUBS 3'	
POSTS 8'	
POSTS 9'	
POSTS 9-1/2'	
POSTS 11'	

RECAPITULATION OF MATERIALS		
ITEMS	TOTAL	UNIT
Sign Face, (High Intensity HA Reflective Sheeting)	92.0	S.F.
Steel "U" Channel Sign Post		L.F.
Breakaway Sign Post, 1-3/4" x 1-3/4"	206.5	L.F.
Breakaway Anchor Sleeve, 2-1/4" x 2-1/4" x 18"	34.5	L.F.
Breakaway Sign Post Anchor, 2" x 2" x 36"	69.0	L.F.

NOTE: ALL LETTER, NUMBER, & SYMBOL SIZES, SPACING, AND COLORS AND SHALL CONFORM TO THE CURRENT "MANUAL ON UNIFORM TRAFFIC CONTROL DEVICES." ALL SIGN MATERIAL TO BE 0.080" ALUMINUM.

SIGN DESCRIPTION			
CLASSIFICATION	TYPE	SIZE	AREA
R1-1	STOP SIGN	30"x30"	5.18 SQ. FT.
R2-1	SPEED LIMIT	24"x30"	5.00 SQ. FT.
R3-7R	RIGHT LAN MUST TURN RIGHT	30"x30"	6.25 SQ. FT.
R4-7	KEEP RIGHT	24"x30"	5.00 SQ. FT.
OM1-1	OM-1	18"x18"	2.25 SQ. FT.

RECAPITULATION OF MATERIALS		
BID ITEMS	TOTAL	UNIT
Traffic Signing	LUMP SUM	L.S.

**PAVEMENT INSTALLATION SEQUENCE**

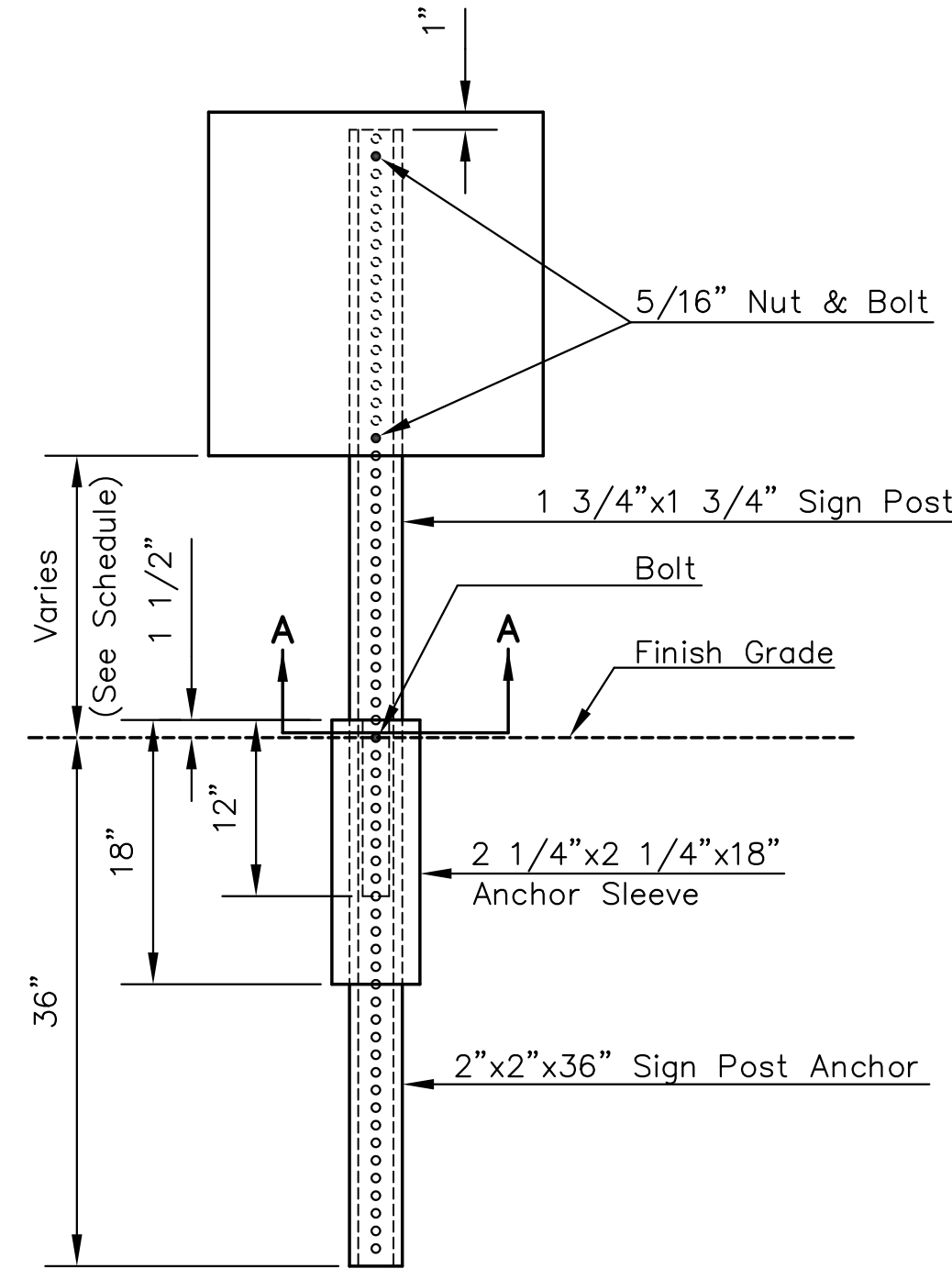
- SIGN POST ANCHOR DRIVEN INTO SUBGRADE PRIOR TO THE PLACEMENT OF THE PAVEMENT.
- ANCHOR SLEEVE DRIVEN INTO SUBGRADE OVER THE SIGN POST ANCHOR PRIOR TO THE PLACEMENT OF THE PAVEMENT.
- INSERT SIGN POST INTO THE SIGN POST ANCHOR AND BOLT IN PLACE.

**GROUND INSTALLATION SEQUENCE**

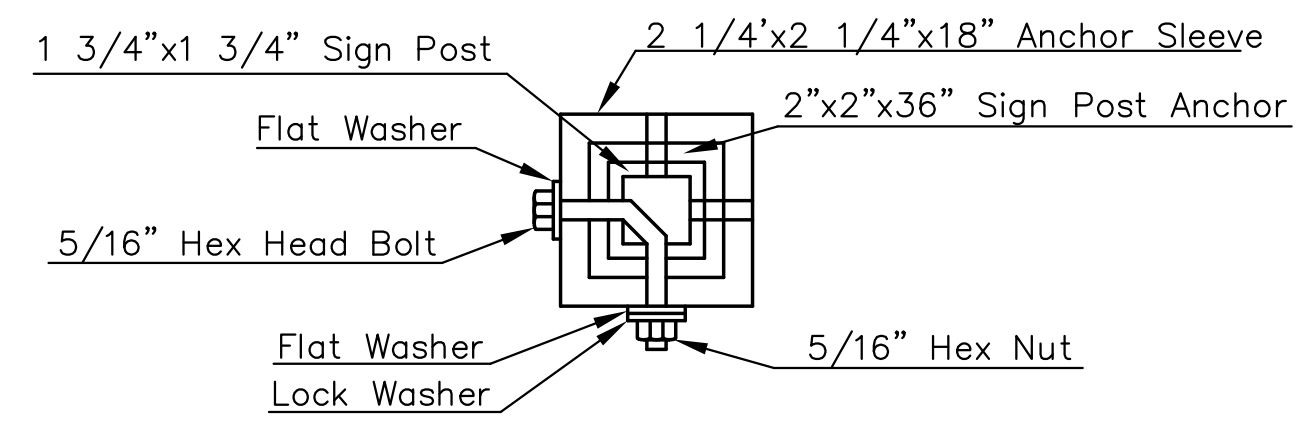
- SIGN POST ANCHOR DRIVEN INTO THE GROUND.
- ANCHOR SLEEVE DRIVEN INTO THE GROUND OVER THE SIGN POST ANCHOR.
- INSERT SIGN POST INTO THE SIGN POST ANCHOR AND BOLT IN PLACE.

NOTE: IN ALL INSTALLATIONS THE FIRST HOLE ABOVE THE FINISHED GRADE LEVEL IN ALL THREE UNITS MUST BE IN LINE FOR INSERTION OF THE BOLT.

ALL BOLTS AND NUTS FOR FASTENING THE SIGNS AND SIGN POST ASSEMBLY SHALL COMPLY WITH SECTION 1614 AND ALL WASHERS SHALL COMPLY WITH SECTION 1614 OF THE STANDARD SPECIFICATION FOR STATE ROAD AND BRIDGE CONSTRUCTION (1990 EDITION) AND SHALL BE SUBSIDIARY ITEM.



**ELEVATION**



**SECTION A-A**

**BREAK-AWAY SIGN POST DETAIL**

**TRAFFIC SIGN  
DETAILS**  
SHEET TITLE  
472-84693  
PROJECT NUMBER

DESIGN BY  
DRAWN BY  
CHECKED BY

ISSUED  
March 24, 2009  
REVISED

SHEET NO.  
90 of 133