

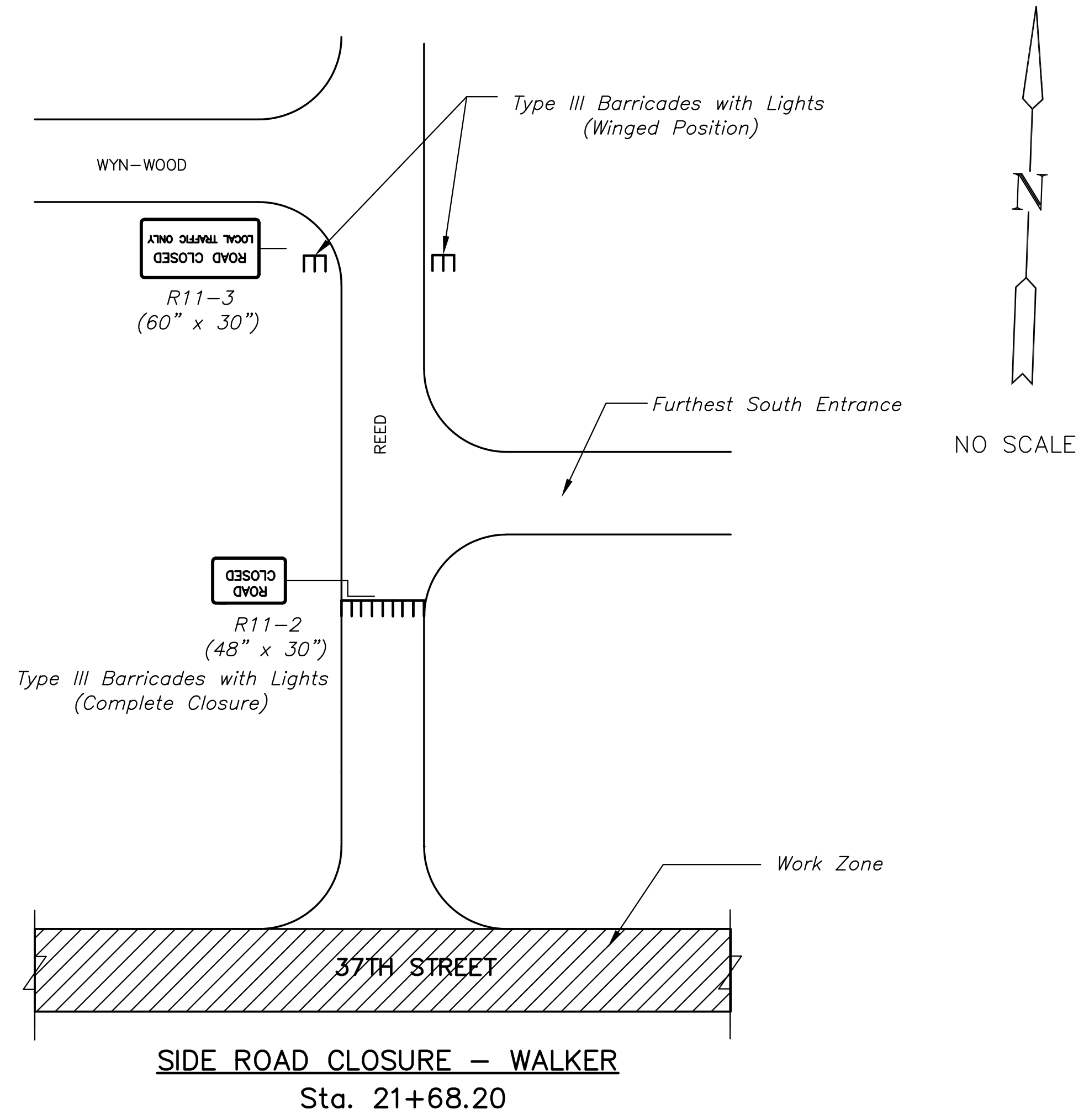
**37TH STREET IMPROVEMENTS
FROM
MAIZE ROAD TO TYLER ROAD**

TRAFFIC CONTROL PLAN
SHEET TITLE
PROJECT NUMBER
472-84693

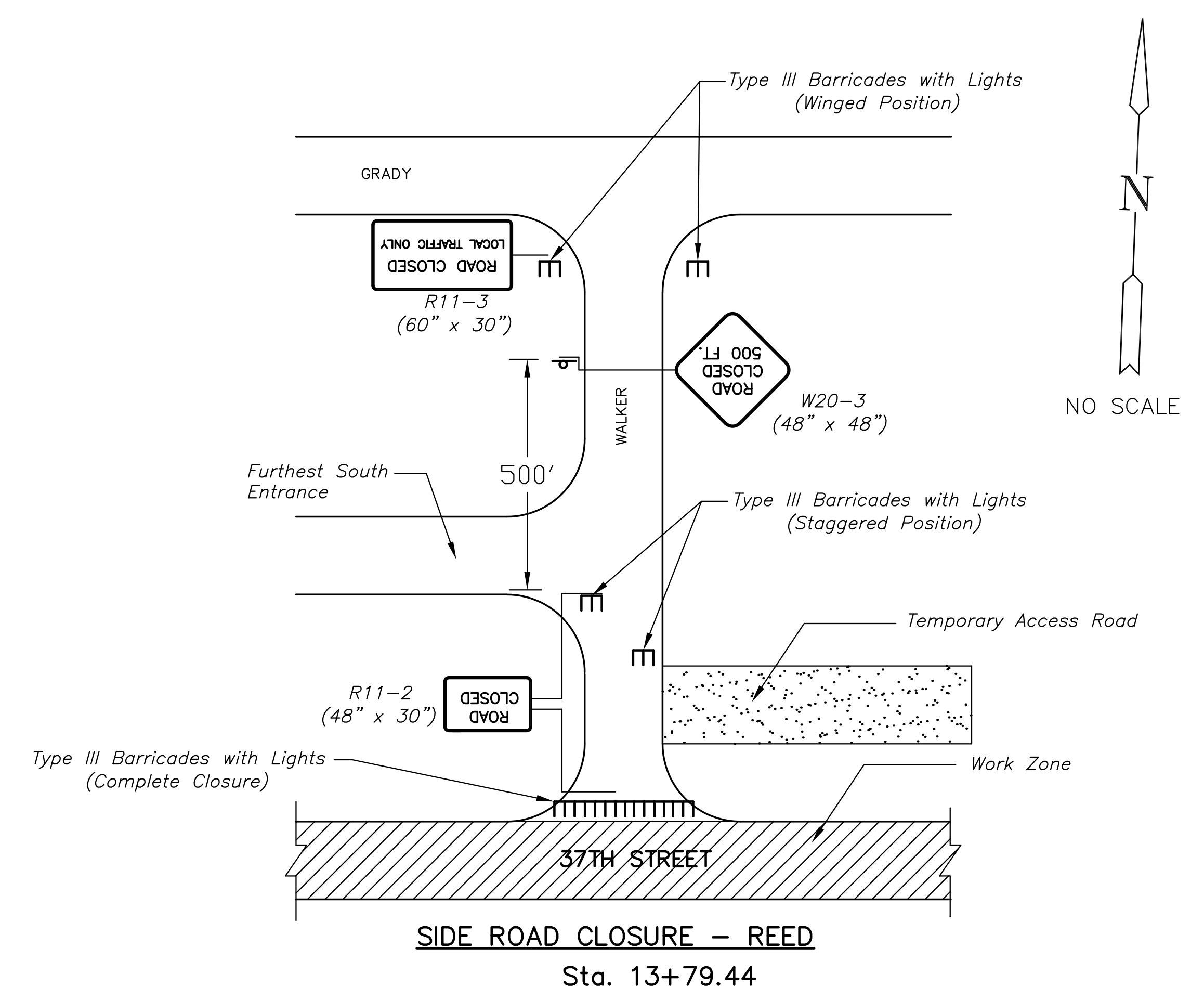
DESIGN BY
DRAWN BY
CHECKED BY

ISSUED
March 24, 2009
REVISED

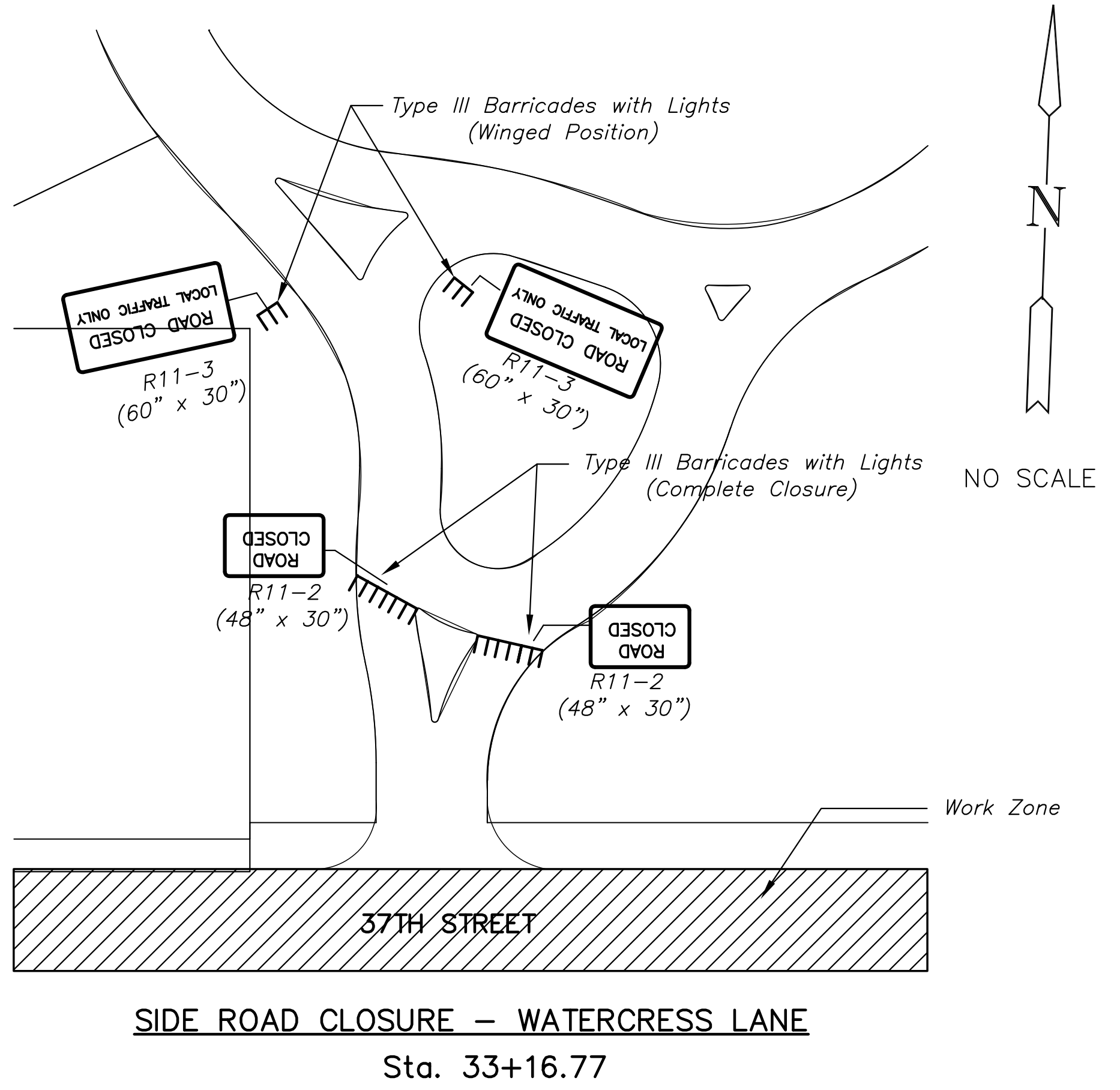
SHEET NO.
93 of 133



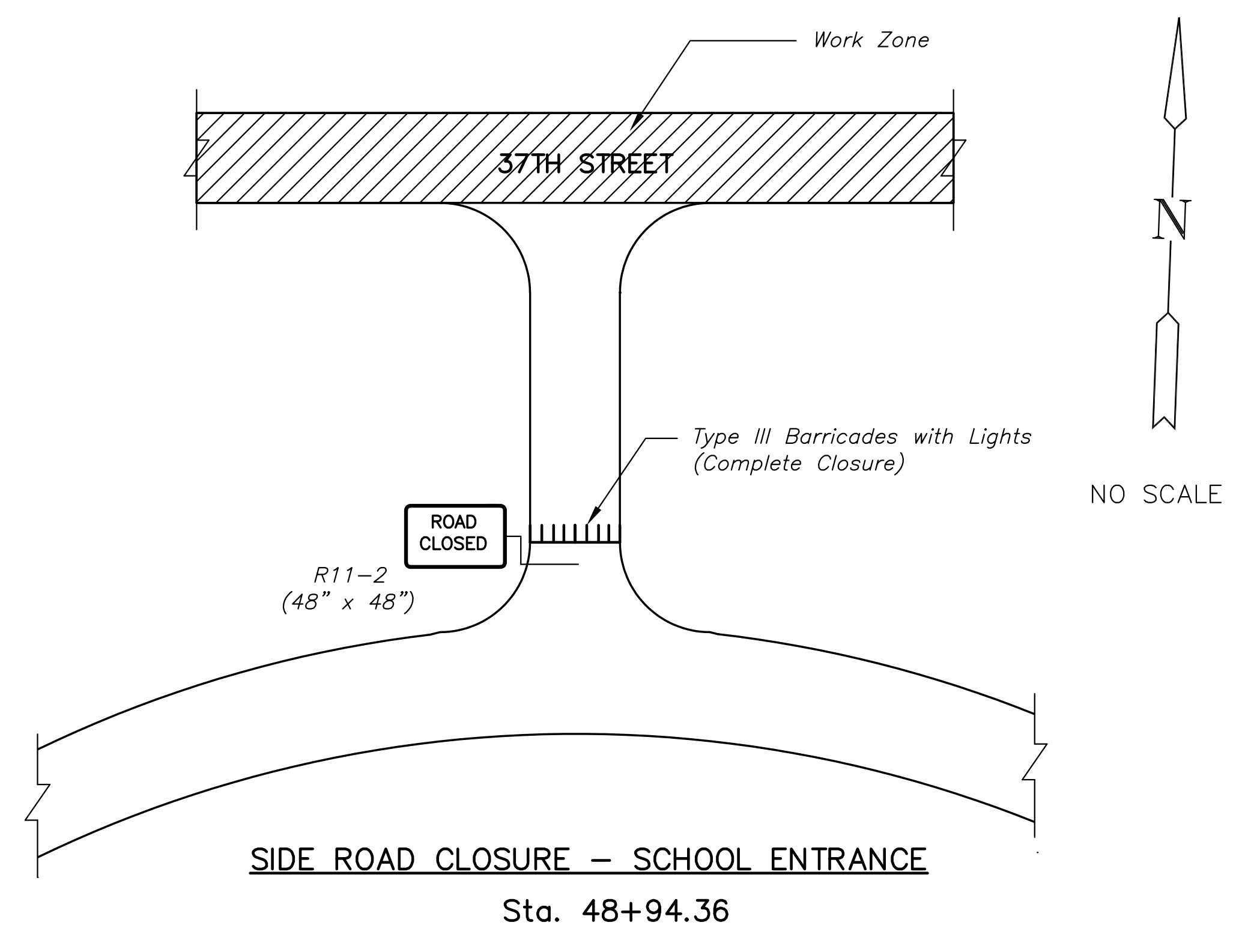
SIDE ROAD CLOSURE – WALKER
Sta. 21+68.20



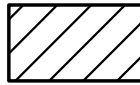
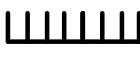

SIDE ROAD CLOSURE – REED
Sta. 13+79.44



SIDE ROAD CLOSURE – WATERCRESS LANE
Sta. 33+16.77



SIDE ROAD CLOSURE – SCHOOL ENTRANCE
Sta. 48+94.36

- LEGEND**
-  Work Area
 -  Typical III Barricades w/Lights
 -  One-Post Sign

PLOTTED: Tuesday, March 24, 2009 @ 11:34AM

J:\Civil\08137.DWG\TRAFFIC\08137Traffic Control Plan