

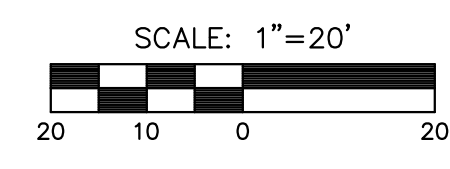
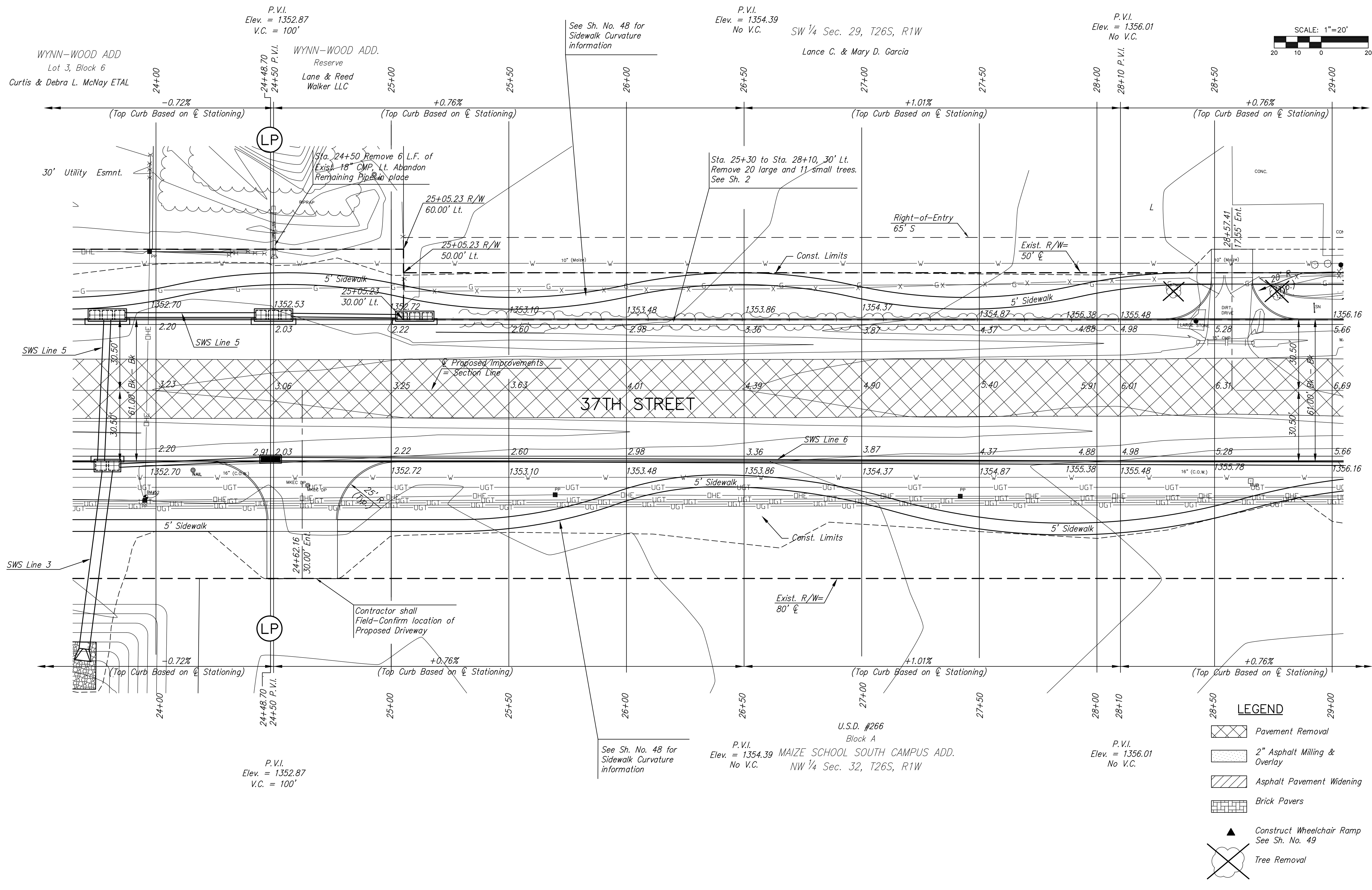
**37TH STREET IMPROVEMENTS
FROM
MAIZE ROAD TO TYLER ROAD**

**PLAN SHEET
STA. 24+0.00
TO
STA. 29+0.00**
SHEET TITLE
472-84693
PROJECT NUMBER

DESIGN BY
DRAWN BY
CHECKED BY

ISSUED
March 25, 2009
REVISED

SHEET NO.
9 of 133



LEGEND

- Pavement Removal
- 2" Asphalt Milling & Overlay
- Asphalt Pavement Widening
- Brick Pavers
- Construct Wheelchair Ramp See Sh. No. 49
- Tree Removal

PLOTTED: Wednesday, March 25, 2009 @ 02:31PM

J:\Civil\08137\DWG\PAV\08137-E5