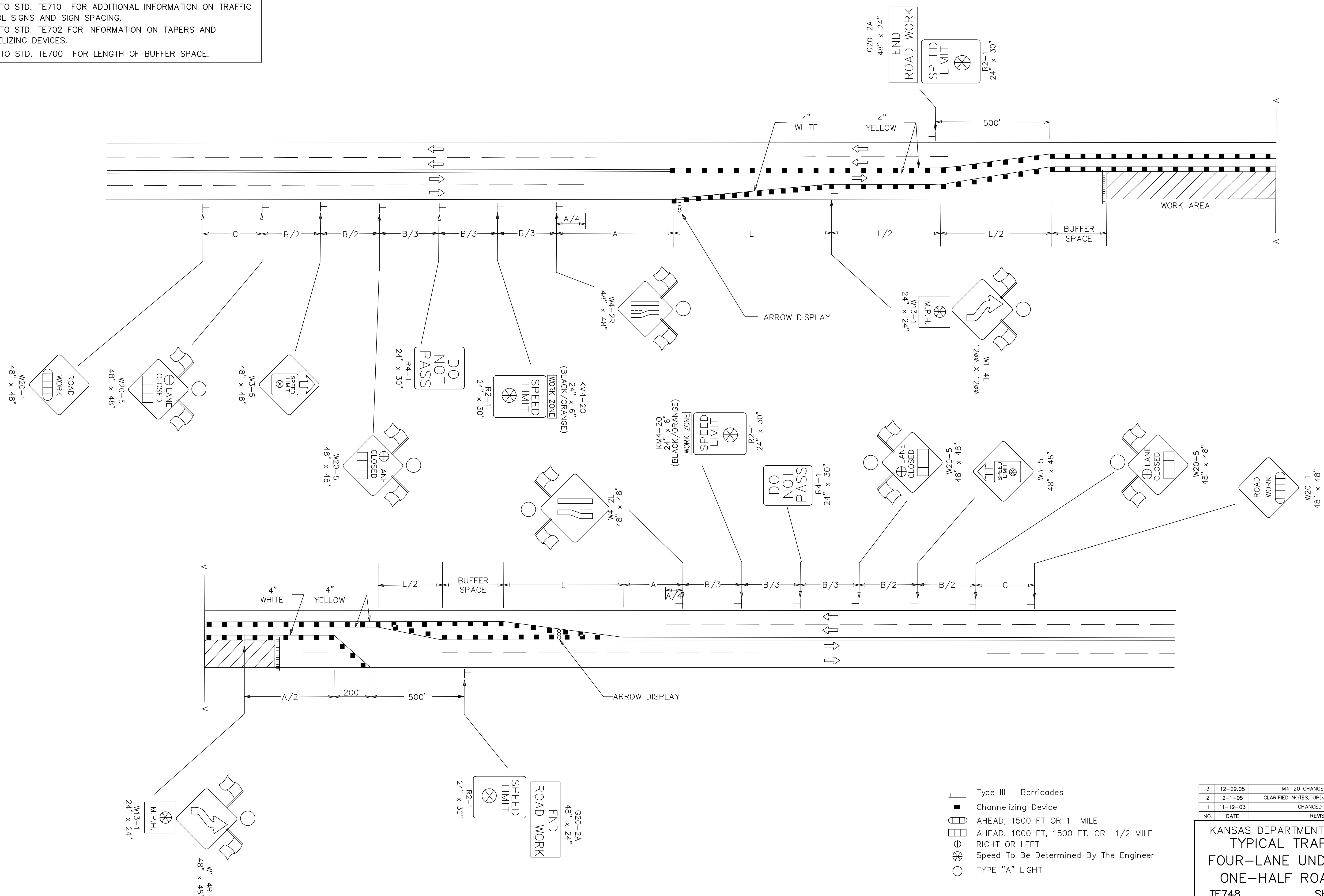


REFER TO STD. TE710 FOR ADDITIONAL INFORMATION ON TRAFFIC CONTROL SIGNS AND SIGN SPACING.  
 REFER TO STD. TE702 FOR INFORMATION ON TAPERS AND CHANNELIZING DEVICES.  
 REFER TO STD. TE700 FOR LENGTH OF BUFFER SPACE.



- ▬ Type III Barricades
- Channelizing Device
- AHEAD, 1500 FT OR 1 MILE
- AHEAD, 1000 FT, 1500 FT, OR 1/2 MILE
- ⊕ RIGHT OR LEFT
- ⊗ Speed To Be Determined By The Engineer
- TYPE "A" LIGHT

3	12-29-05	M4-20 CHANGED TO KM4-20	M.B.	A.A.A.
2	2-1-05	CLARIFIED NOTES, UPDATED WARNING SIGNS	B.H.	A.A.A.
1	11-19-03	CHANGED BORDER	B.H.	S.A.B.
NO.	DATE	REVISION	BY	APP'D

**KANSAS DEPARTMENT OF TRANSPORTATION**  
**TYPICAL TRAFFIC CONTROL**  
**FOUR-LANE UNDIVIDED HIGHWAY**  
**ONE-HALF ROADWAY CLOSED**  
**TE748 SH 93/131 9/1/00**

FHWA APPROVAL	12-29-05	APP'D Anthony A. Alrobaire
DESIGNED B.A.H.	DETAILED B.A.H.	QUANTITIES
DESIGN CK.	DETAIL CK.	QUAN. CK.
		TRACED
		TRACE CK.