

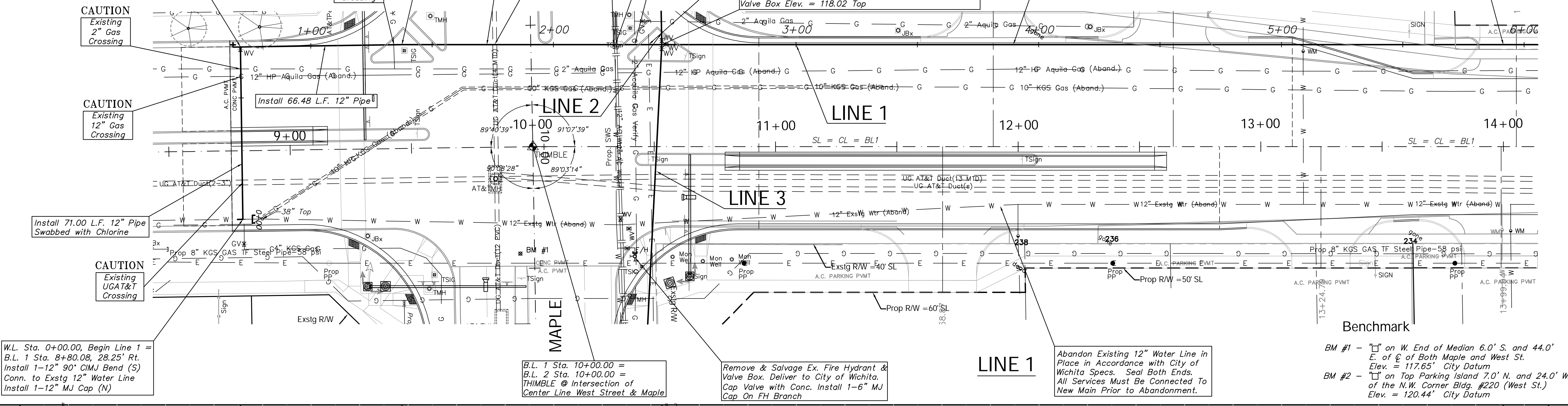
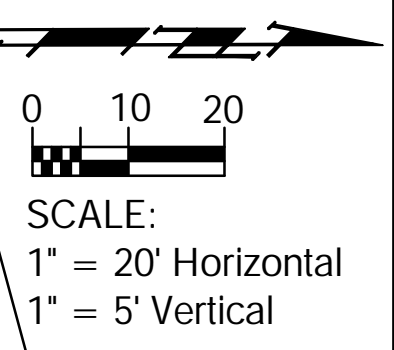
W.L. Sta. 0+71.00, Line 1 =
 B.L. 1 Sta. 8+80.08, 42.75' Lt.
 Install 1-12" CIMJ Tee (E)
 Install 1-12" Valve Assy (Butterfly Valve) (E)
 Install 3' L.F. 12" DCL Pipe (S)
 Install 1-2" Blowoff Assy (S)
 Extend 12" Water Main North.
 Valve Box Elev. 116.30 Top

W.L. Sta. 1+37.48, Line 1 =
 B.L. 1 Sta. 9+46.48, 42.75' Lt.
 Deflect Pipe 0'48"0" E

W.L. Sta. 2+44.68, Line 1 =
 W.L. Sta. 0+00.00, Begin Line 2 =
 W.L. Sta. 0+00.00, Begin Line 3 =
 B.L. 1 Sta. 10+53.17, 42.00' Lt.
 Install 1-12" CIMJ Cross
 Install 2-12" Anch Valve Assy. (Butterfly Valve) (E&W)
 Valve Box Elev. (E) = 118.07 Top
 Valve Box Elev. (W) = 118.02 Top
 Install 1-12" Valve Assy. (Butterfly Valve) (N)
 Valve Box Elev. = 118.02 Top

W.L. Sta. 5+91.51 Line 1 =
 B.L. 1 Sta. 14+00.00 =
 Match Point.

Note:
 See Water Meter
 Table For Service
 Locations.



W.L. Sta. 0+00.00, Begin Line 1 =
 B.L. 1 Sta. 8+80.08, 28.25' Rt.
 Install 1-12" 90° CIMJ Bend (S)
 Conn. to Exstg 12" Water Line
 Install 1-12" MJ Cap (N)

B.L. 1 Sta. 10+00.00 =
 B.L. 2 Sta. 10+00.00 =
 THIMBLE @ Intersection of
 Center Line West Street & Maple

Remove & Salvage Ex. Fire Hydrant &
 Valve Box. Deliver to City of Wichita.
 Cap Valve with Conc. Install 1-6" MJ
 Cap On FH Branch

Abandon Existing 12" Water Line in
 Place in Accordance with City of
 Wichita Specs. Seal Both Ends.
 All Services Must Be Connected To
 New Main Prior to Abandonment.

BM #1 - "I" on W. End of Median 6.0' S. and 44.0'
 E. of C of Both Maple and West St.
 Elev. = 117.65' City Datum
 BM #2 - "I" on Top Parking Island 7.0' N. and 24.0' W.
 of the N.W. Corner Bldg. #220 (West St.)
 Elev. = 120.44' City Datum

