

Note:  
See Water Meter Table For Service Locations.

W.L. Sta. 29+91.54, Line 1 =  
B.L. 1 Sta. 38+00.00 =  
Match Point.

W.L. Sta. 30+91.87, Line 1 =  
B.L. Sta. 39+00.33, 42.00' Lt.  
Install 85.00 L.F. 2\"/>

W.L. Sta. 32+09.25, Line 1 =  
B.L. 1 Sta. 40+17.71, 42.00' Lt.  
Install 1-12\"/>

W.L. Sta. 32+16.58, Line 1 =  
B.L. 1 Sta. 40+25.04, 42.00' Lt.  
Install 1-Fire Hydrant Assy. (E)  
L = 3.50'  
Valve Box Elev. 120.27 Top  
Bury Line Elev. 119.54

CAUTION  
Existing UGAT&T Crossing

W.L. Sta. 33+89.83, Line 1 =  
B.L. 1 Sta. 41+98.29, 42.00' Lt.  
Install 1-12\"/>

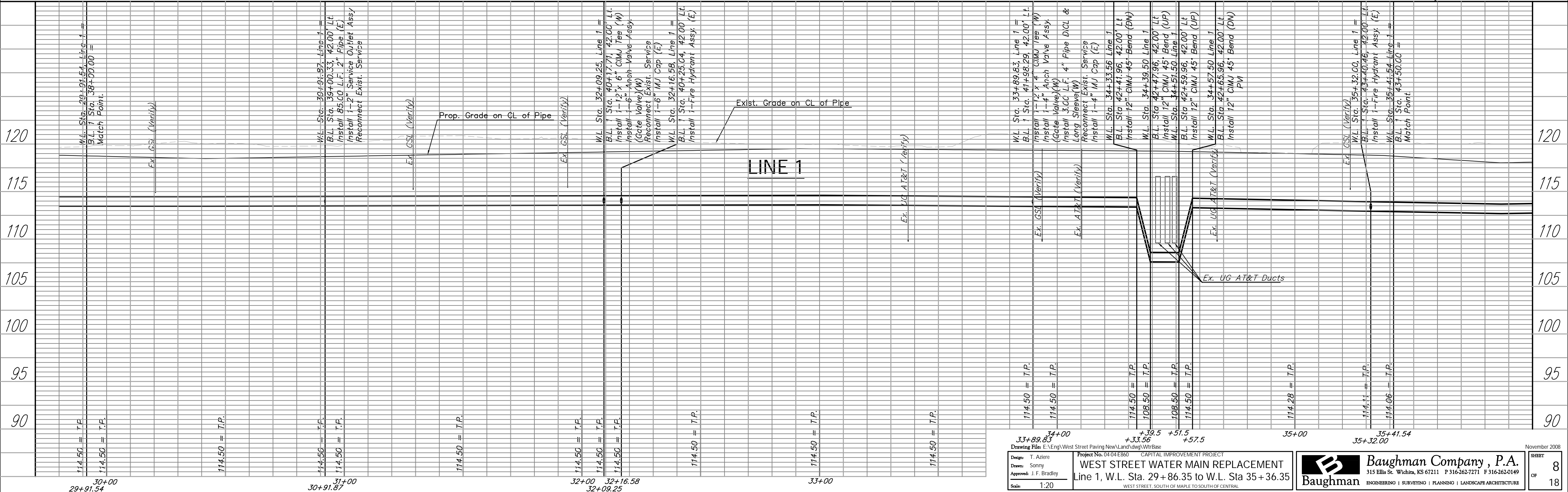
W.L. Sta. 34+39.50 Line 1  
B.L. Sta. 42+47.96, 42.00' Lt  
Install 12\"/>

W.L. Sta. 34+57.50 Line 1  
B.L. Sta. 42+65.96, 42.00' Lt  
Install 12\"/>

W.L. Sta. 35+41.54 Line 1 =  
B.L. 1 Sta. 43+50.00 =  
Match Point.

W.L. Sta. 35+32.00, Line 1 =  
B.L. 1 Sta. 43+40.46, 42.00' Lt.  
Install 1-Fire Hydrant Assy. (E)  
L = 3.50'  
Valve Box Elev. 119.62 Top  
Bury Line Elev. 118.76

Benchmark  
BM #5 - City Disc 34.0' W. and 18.0' S. of  $\odot$  of Both 2nd St. and West St. Elev. = 118.87\"/>



Design: T. Azlere  
 Drawn: Sonny  
 Approved: J. F. Bradley  
 Scale: 1:20

Project No. 04-04-880  
**WEST STREET WATER MAIN REPLACEMENT**  
 Line 1, W.L. Sta. 29+86.35 to W.L. Sta 35+36.35  
 WEST STREET, SOUTH OF MAPLE TO SOUTH OF CENTRAL

November 2008  
**Baughman Company, P.A.**  
 315 Ellis St. Wichita, KS 67211 P 316-262-7271 F 316-262-0149  
 ENGINEERING | SURVEYING | PLANNING | LANDSCAPE ARCHITECTURE

SHEET  
**8**  
 OF  
**18**